

ELECTRICAL SYSTEM AND EQUIPMENT
METHOD OF COMPLIANCE

PRESCRIPTIVE PERFORMANCE ENERGY COST BUDGET

PROVIDE A STANDARD RISER DIAGRAM WHICH INDICATES DESIGNATED POINTS FOR CHECK METERING. PROVIDE A STANDARD PANEL SCHEDULE DESCRIPTION WHICH IDENTIFIES DIFFERENT ENDUSE LOADS

LIGHTING SCHEDULE

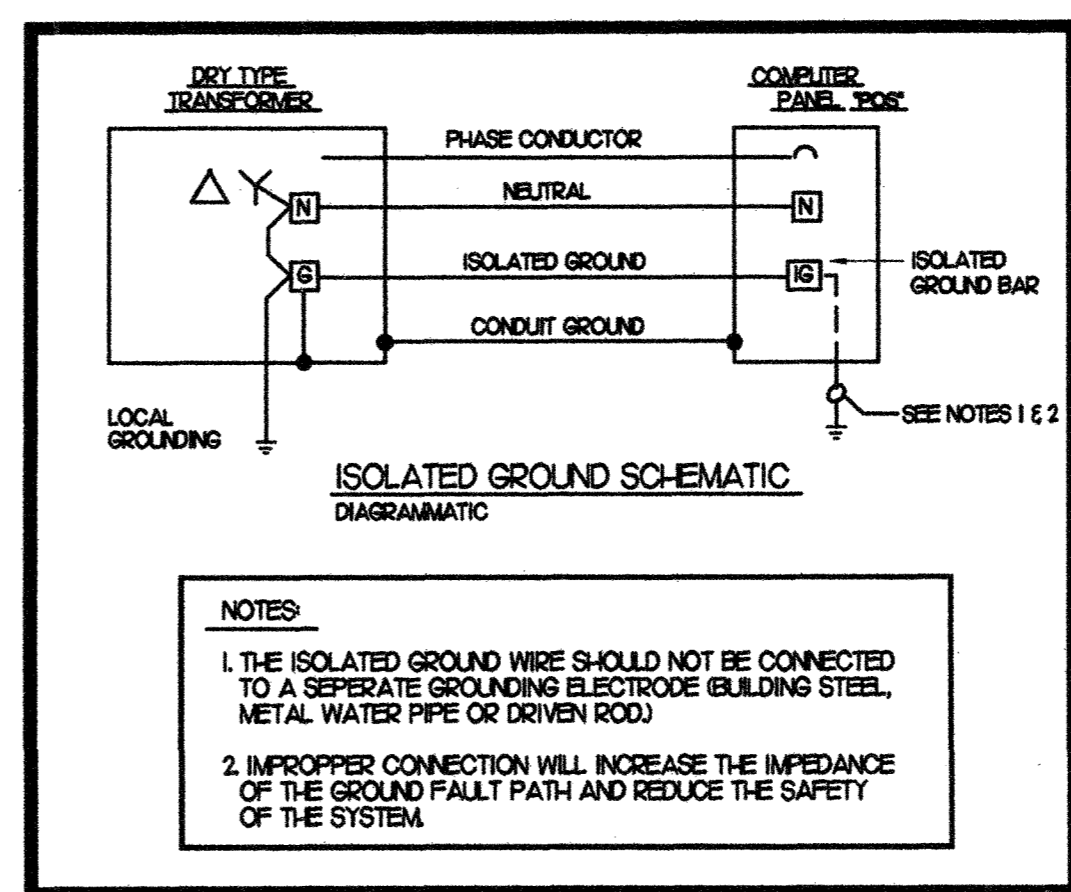
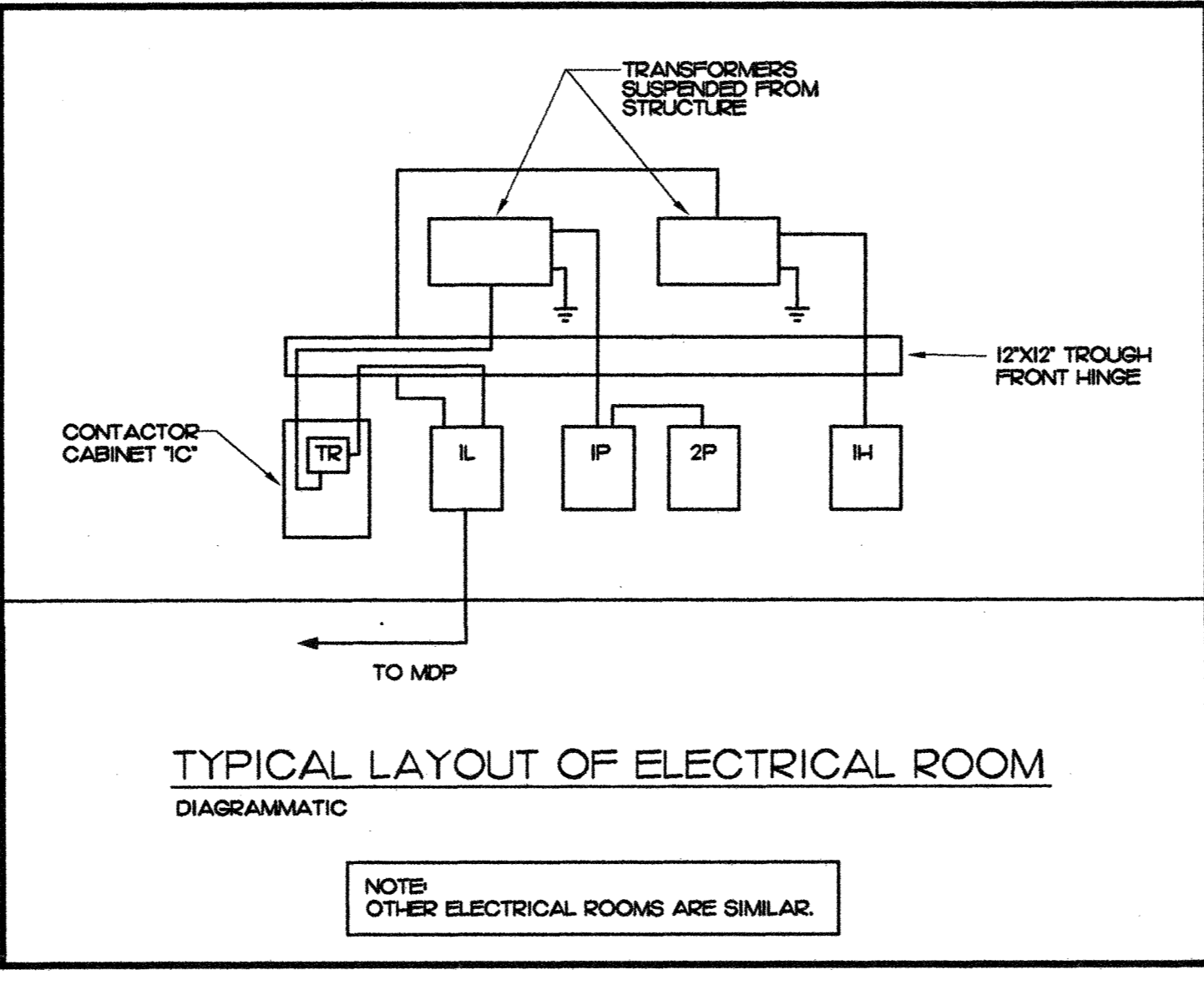
LAMP TYPE REQUIRED IN FIXTURE (SEE FIXTURE SCHEDULE)
 NUMBER OF LAMPS IN FIXTURE
 BALLAST TYPE USED IN FIXTURE
 TOTAL INTERIOR WATTAGE SPECIFIED VS. ALLOWED 107,000W VS 120,900W
 TOTAL EXTERIOR WATTAGE SPECIFIED VS. ALLOWED VS

EQUIPMENT SCHEDULES WITH MOTORS (NOT USED FOR MECHANICAL SYSTEMS)

MOTOR HORSEPOWER DANA
 NUMBER OF PHASES
 MINIMUM EFFICIENCY
 MOTOR TYPE
 # OF POLES

DESIGNER STATEMENT:
 TO THE BEST OF MY KNOWLEDGE AND BELIEF, THE DESIGN OF THIS BUILDING COMPLIES WITH THE ELECTRICAL SYSTEM AND EQUIPMENT REQUIREMENTS OF THE LOCAL ENERGY CODE.

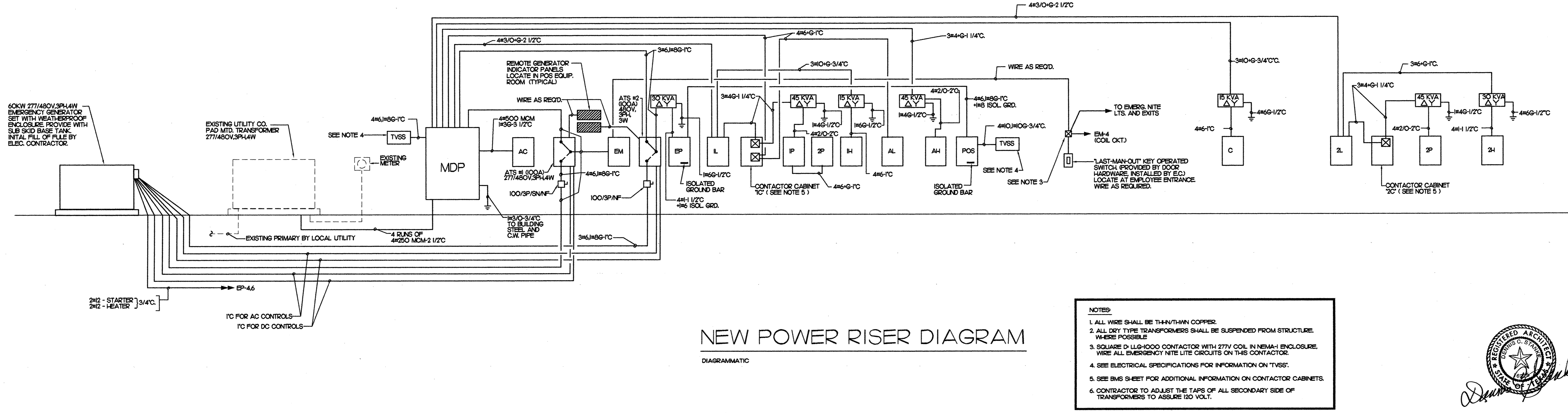
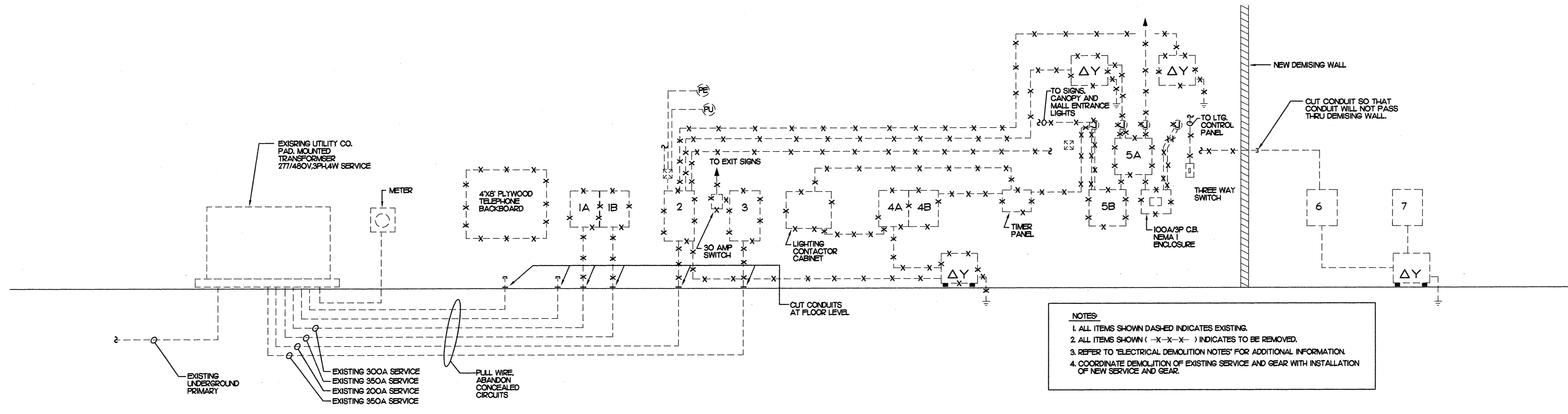
SIGNED: *J. V. Ezeziel*
 NAME: JAMES V. EZEZIEL
 TITLE: ELECTRICAL DESIGNER



LOAD SUMMARY
SERVICE 277/480-3P-4W

CONNECTED LOAD	CONNECTED KVA
LIGHTING INTERIOR & EXTERIOR	112.0
RECEPTACLES	67.8
HVAC	276.5
WATER HEATERS	4.5
MISC	7.3
MOTORS	18.8
FUTURE CAPACITY	200.0
TOTAL	686.9

686.9 ÷ √3 480V = 826.6 AMPS



PROJECT: BELK CROSSROADS MALL GREENVILLE, TX
 SHEET TITLE: RISER DIAGRAM
 SHEET NUMBER: 1 OF 4
 ARCHITECTURAL SHEET NUMBER: E-12
 OF 19 SHEETS

Robert C. Kennedy, Jr.
 REGISTERED PROFESSIONAL ENGINEER
 STATE OF TENNESSEE
 License No. 28770

Expiration: 7/31/99
 Affixed: 2/17/99