

H

G

F

E2

E1

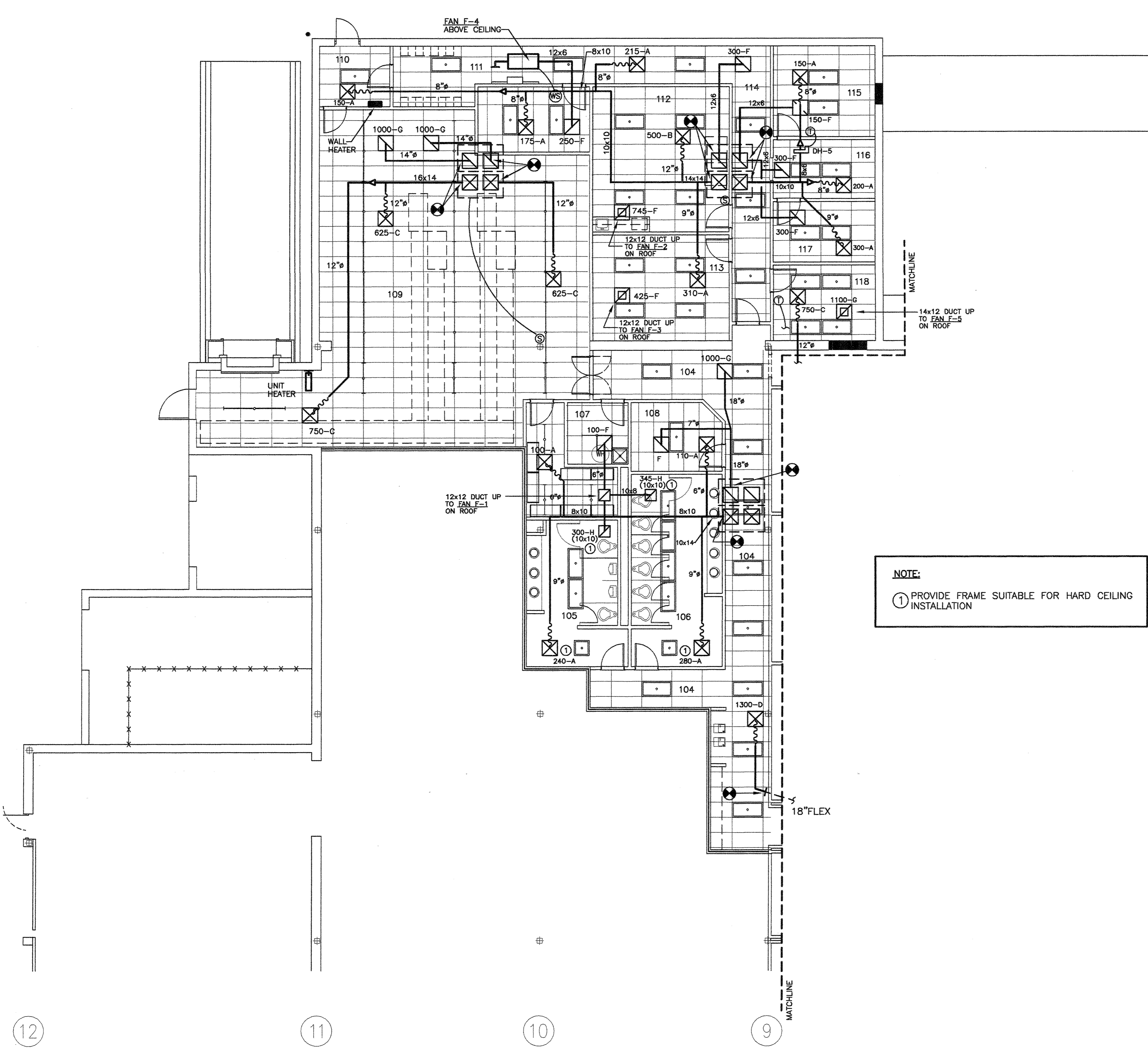
E

12

11

10

9



NOTE:
 ① PROVIDE FRAME SUITABLE FOR HARD CEILING INSTALLATION

ROOM	SCHEDULE
100	GENERAL SALES
101	ENT. VESTIBULE
102	FITTING ROOM
103	STOCK ROOM
104	CORRIDOR
105	MALE RESTROOM
106	FEMALE RESTROOM
107	DISPLAY STORAGE
108	JANITOR
109	MARKING/RECEIVING
110	ASSOC. ENTRANCE
111	COAT/LOCKER
112	ASSOC. LOUNGE
113	ASM UTILITY
114	CORRIDOR
115	MANAGER OFFICE
116	CASH/AUDIT
117	COPIER/MAIL ROOM
118	TRAINING ROOM
119	FITTING ROOM
120	STOCK
121	STOCK/ELECTRICAL
122	FITTING ROOMS
123	CORRIDOR
124	STOCK
125	CORRIDOR
126	STOCK
127	ELECTRICAL ROOM
128	STOCK
129	STOCK
130	CORRIDOR
131	FITTING ROOMS
132	FITTING ROOMS
133	STOCK
134	STOCK
135	STOCK
136	FITTING ROOMS

MECHANICAL EQUIPMENT

FANS

FAN F-1 & F-2 GREENHECK
 745 CFM @ 0.5 ESP; 1140 RPM @ 1/2 SWITCH, BACKDRAFT DAMPER, BIRDSCREEN

FAN F-3 GREENHECK
 425 CFM @ 0.5 ESP; 1550 RPM @ 1/2 SWITCH, BACKDRAFT DAMPER, BIRDSCREEN

FAN F-4 GREENHECK
 250 CFM @ 0.5 ESP; 1550 RPM @ 1/2 SWITCH, BACKDRAFT DAMPER, SPRING VIBRATION LINING

FAN F-5 GREENHECK
 1100 CFM @ 0.5 ESP; 1725 RPM @ 1/2 SWITCH, BACKDRAFT DAMPER, BIRDSCREEN

FAN F-6 GREENHECK
 500 CFM @ 0.5 ESP; 1360 RPM @ 1/2 SWITCH, BACKDRAFT DAMPER, SPRING VIBRATION LINING

UNIT HEATER MARKEL P3
 10.0 KW; 480V-3φ; 1/50 HP; 700 CFM FLOOR. PROVIDE WALL MOUNTING BRACKET

WALL HEATER MARKEL G3
 2000 WATTS; 277V-1φ; 6.825 BTUH, WITH THERMOSTAT, SEMI-RECESSED.

ENTRANCE VENTILATION SYSTEM
 1500 CFM @ 1.0 ESP; 3/4 HP @ 2265 SWITCH, BACKDRAFT DAMPER, MOTOR COIL HANGING VIBRATION ISOLATORS, FILTER S

10.0 KW DUCT HEATER, 2 STEPS, 480V-DETAIL FOR ADDITIONAL INFORMATION.

SEQUENCE OF OPERATION

UTILIZE A HEATING/COOLING THERMOSTAT ACCESSIBLE CEILING. A REMOTE SENSOR OF ENTRANCE VESTIBULE. THERMOSTAT TO A SETPOINT OF 60°F (ADJUSTABLE), ABOVE ON.

AIR DISTRIBUTION

SYMBOL	SERVICE	FACE SIZE
A	SUPPLY	24x24
B	SUPPLY	24x24
C	SUPPLY	24x24
D	SUPPLY	24x24
* E	SUPPLY	3-3/4" SLOTS
F	RETURN	24x24
G	RETURN	24x24
H	EXHAUST	SEE PLANS

* PROVIDE END CAPS AND PLENUM BOOTS AS ALL DEVICES SHALL BE FURNISHED WITH AN END FOR PROPER CEILING INSTALLATION.

DUCT HEATERS

SYMBOL	CFM	KW	VOLTAGE
DH-1	350	2.5	277V-1φ
DH-2	350	2.5	277V-1φ
DH-3	160	1.0	277V-1φ
DH-4	125	1.0	277V-1φ
DH-5	150	1.0	277V-1φ

SEE ELECTRONIC DUCT HEATER FOR ADDITIONAL

LEG

ITEM	EXISTING DUCT (M-1 & 1/2)	NEW
	EXISTING DUCT (M-1 & 1/2)	NEW
		NEW