

A1	ADDENDUM No. 1
	3/16/15
A2	ADDENDUM No. 2
	10/19/15
D1	CCD No. 1
	2/24/16

ISSUED FOR CONSTRUCTION
FEBRUARY 24, 2016

WINDLE + VOLPE
ARCHITECTS
7400 9TH STREET
HOUSTON, TEXAS 77065
PH 713-955-1390

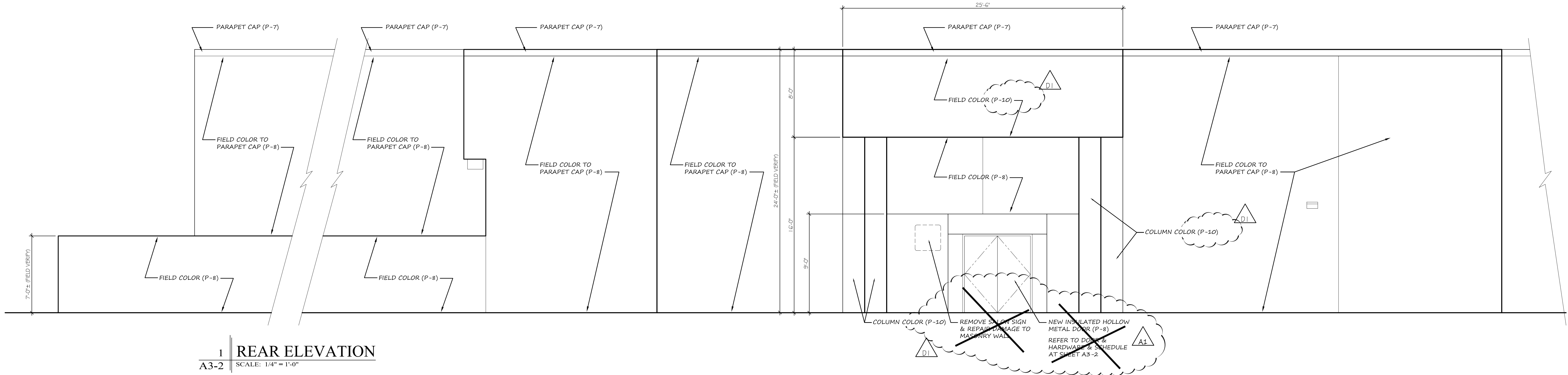


JCPenny ENTRY RENOV.
CROSSROADS MALL
GREENVILLE, TEXAS
GREENVILLE PROPERTIES LTD.
GREENVILLE, TEXAS

DATE	1/15/14
PROJECT NO.	05-14-03
DRAWN BY	

EXTERIOR ELEVATIONS

A3-2



1 REAR ELEVATION
A3-2 SCALE: 1/4" = 1'-0"

A. Butts and Hinges: Listed	Alternate	Alternate
Manufacturer/Item #	Manufacturer/Item #	Manufacturer/Item #
Bommer LB8002	Hager AB800	McKinney TA314

E. Exit/Panic Devices: Listed	Alternate	Alternate
Manufacturer/Item #	Manufacturer/Item #	Manufacturer/Item #
*Von Duprin 9957EO	N/A	N/A

G. Overhead Closers: Listed	Alternate	Alternate
Manufacturer/Item #	Manufacturer/Item #	Manufacturer/Item #
Norton 8301BF	LCN 1461	Yale 3000

J. Door Stops, Door Stop Holders: Listed	Alternate	Alternate
Manufacturer/Item #	Manufacturer/Item #	Manufacturer/Item #
Rockwood 471	Triangle Brass 1201	Ives FS444

K. Door Stripping and Seals: Listed	Alternate	Alternate
Manufacturer/Item #	Manufacturer/Item #	Manufacturer/Item #
National Guard 160V	Pemko 303	Reese 128V

L. Thresholds: Listed	Alternate	Alternate
Manufacturer/Item #	Manufacturer/Item #	Manufacturer/Item #
National Guard 896V	Pemko 2005	Reese S483

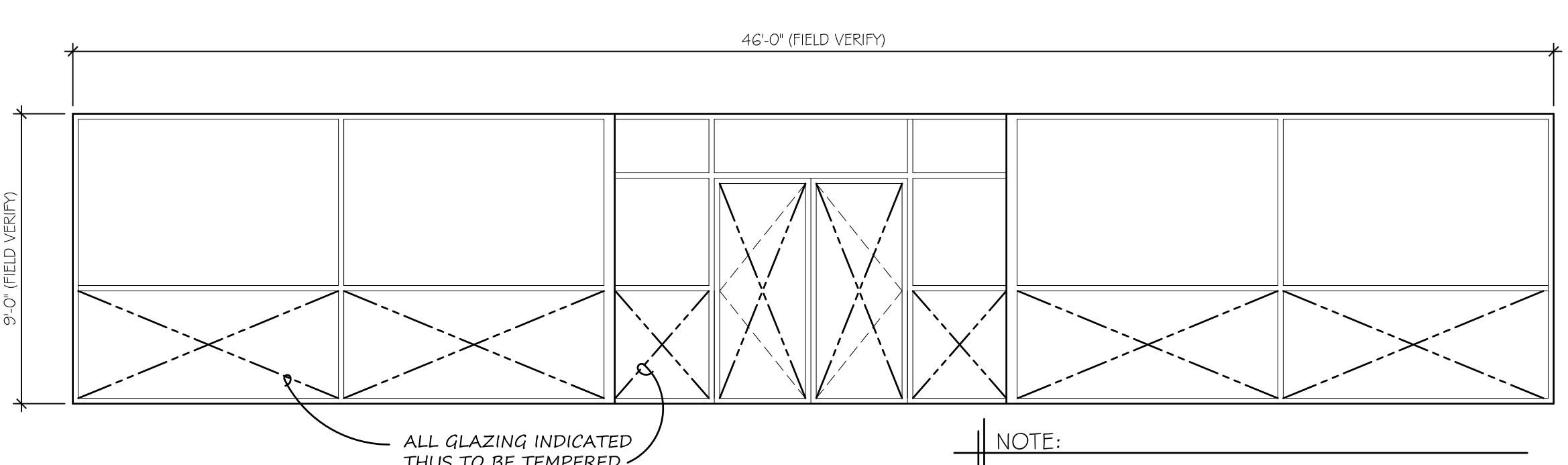
M. Door Sweeps Listed	Alternate	Alternate
Manufacturer/Item #	Manufacturer/Item #	Manufacturer/Item #
National Guard 101VA	Pemko 345AV	Reese

Q. Drip Edge Listed	Alternate	Alternate	Alternate
Manufacturer #	Manufacturer	Manufacturer	Manufacturer
National Guard 16A	Reese R201C	Pemko 346	Hager 810S

Hardware Set No. 8 - Pair of Doors (When Applicable) (Sales to Exterior)			
6 ea Hinges LB8002 4 1/2" x 4 1/2" x NRP x 630 Bommer			
2 ea Exit Device 9957EO x LD x 3" x 7" x SNB x US32D Von Duprin			
1 ea Stop Mullion 4954-7" Von Duprin			
2 ea Closer 8301BF x SNB x 689 Norton			
2 ea Door Stop 471 x 626 Rockwood			
1 ea Thresholds 896V-72" National Guard			
2 sets Weatherstrip 160V-36" x 84" National Guard 2 ea Door Sweeps 101VA-36" National Guard			
1 ea Drip Cap 16A-76" National Guard			
NOTE: Brackets as required			

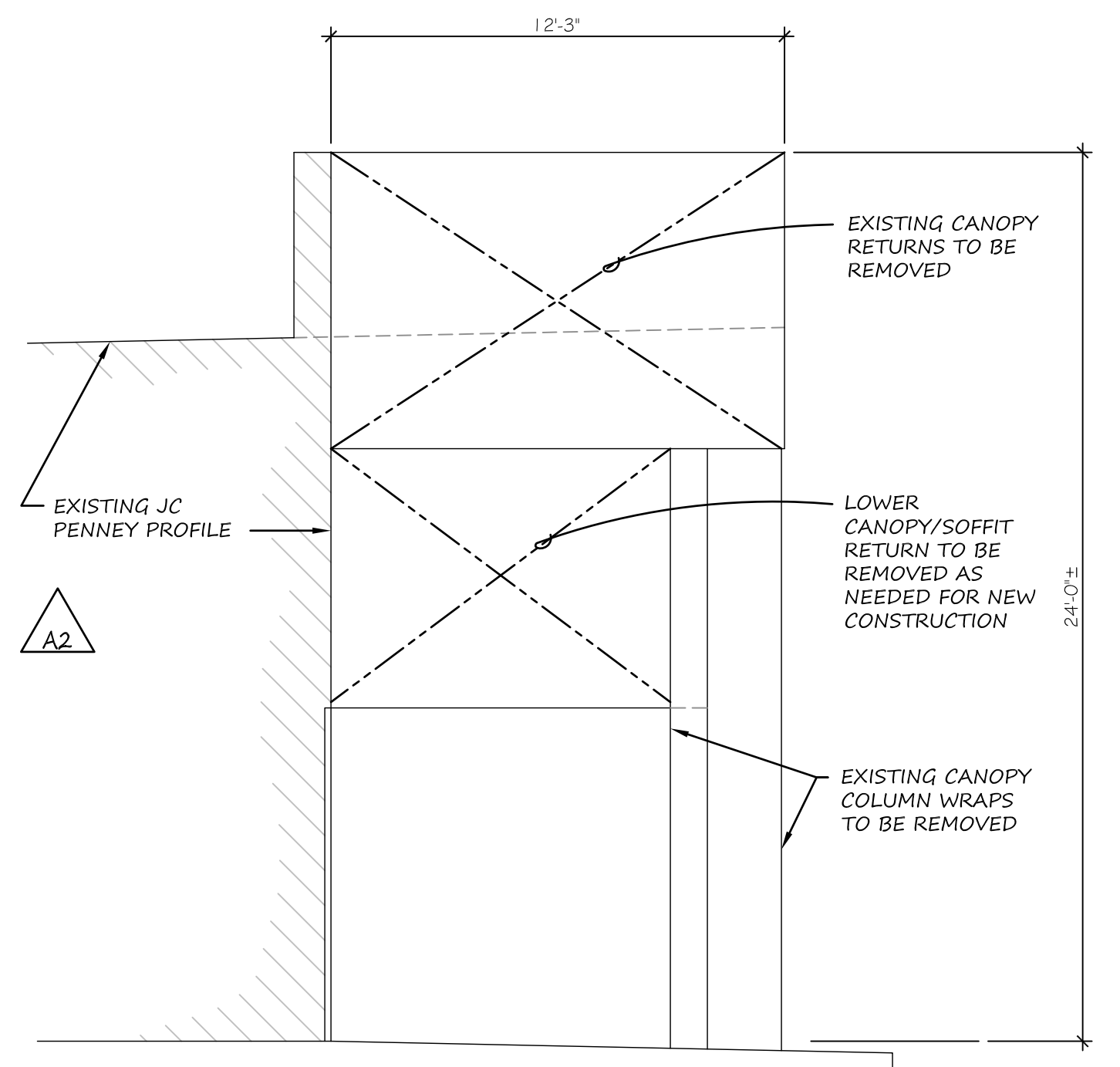
DOOR TYPE
SCALE: 1/4" = 1'-0"

PAINT LEGEND		STONE	
P-7	ICI A074 CREWELWORK GLIDDEN SOYX 74131	ST-2	UPBURCH KIMBROUGH LEXINGTON IVORY
P-8	ICI A074 OYSTER WHITE GLIDDEN SOYX 64149		
P-10	ICI A178 WRIGHT STONE GLIDDEN SOYX 103106		

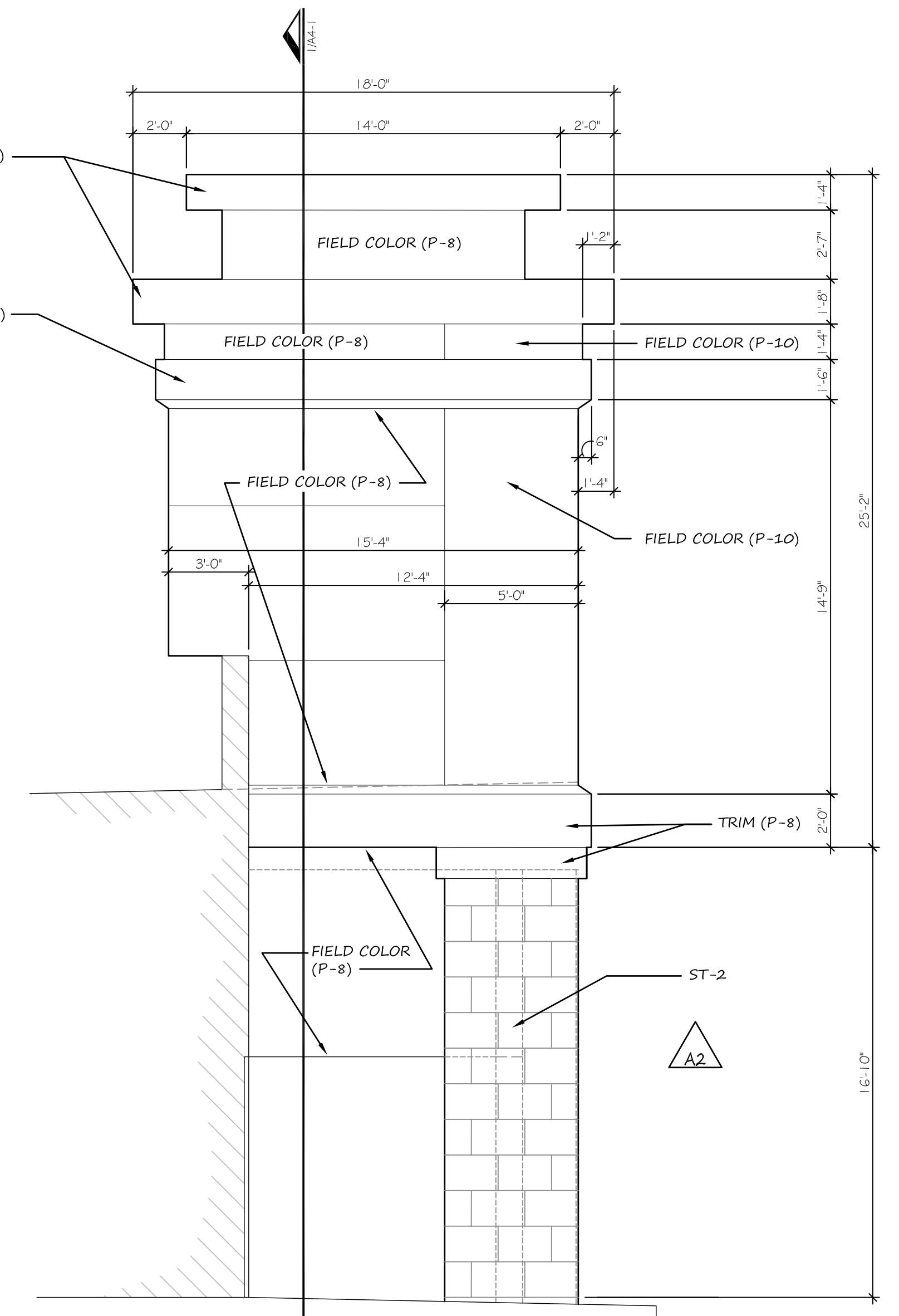


2 STOREFRONT ELEVATION
A3-2 SCALE: 1/4" = 1'-0"

- NOTE:
- ALL STOREFRONT FRAMING, HARDWARE, SECURITY GRILL AND ETCETERAS ARE TO REMAIN
 - REMOVE EXISTING BRONZE TINTED GLAZING AND REPLACE WITH LIKE GREEN TINTED GLAZING (COLOR AS APPROVED BY JCP)



3 EXISTING SIDE ELEVATION
A3-2 SCALE: 1/4" = 1'-0"



4 PROPOSED SIDE ELEVATION
A3-2 SCALE: 1/4" = 1'-0"