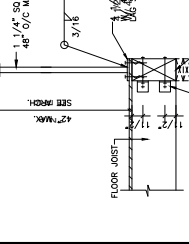


BERKOWITZ ASSOCIATES, INC.
CONSULTING STRUCTURAL ENGINEERS
5532 CORNELL AVENUE, SUITE 355
THERMANS, CA 91356
(818) 688-8588 FAX (818) 688-8596

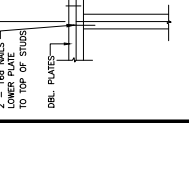
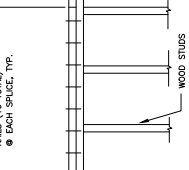
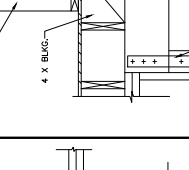
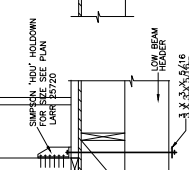
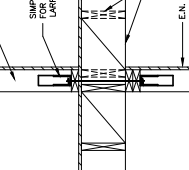
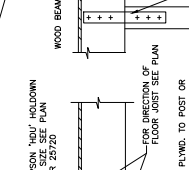
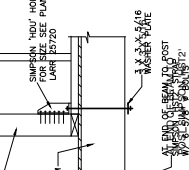
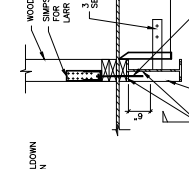
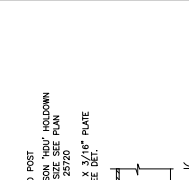
SINGLE FAMILY RESIDENCE
683 GREENSBERRY DR.
LOS ANGELES, CA

3
TYPICAL GUARD RAIL

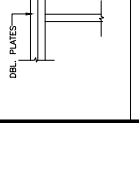
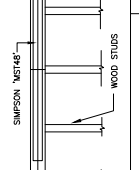
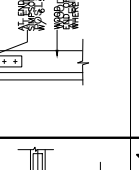
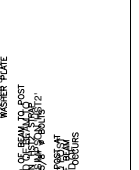
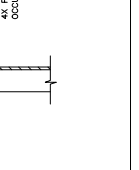
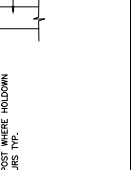
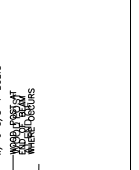
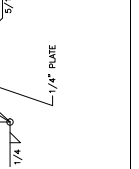
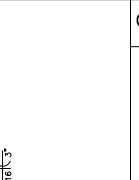
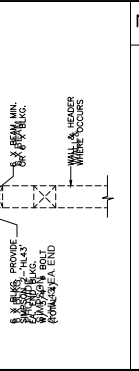


SHEAR WALL SCHEDULE

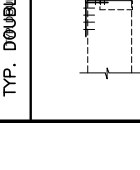
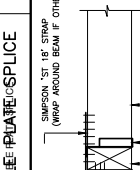
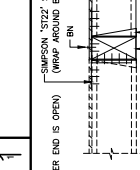
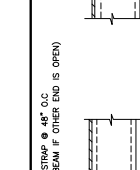
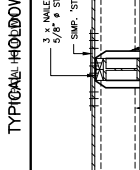
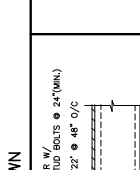
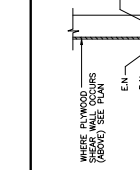
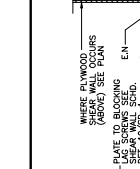
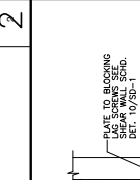
- USE 1/2" WIDE PLYWOOD STRUCT. I, BLOCKED ALL EDGES
PLATE TO BLOOMING 1" X 4" SCREW @ EA. BLAG. (1/4" O.C. MAX.)
SIMP. 'ST22' STRAP @ 48" O.C.
MIN. 2" X 4" END STUDS @ 24" O.C.
MINIMUM STRIP W = 400 #/1'
- USE 1/2" WIDE PLYWOOD STRUCT. I, BLOCKED ALL EDGES
PLATE TO BLOOMING 1" X 4" SCREW @ EA. BLAG. (1/4" O.C. MAX.)
SIMP. 'ST22' STRAP @ 48" O.C.
MIN. 2" X 4" END STUDS @ 24" O.C.
MINIMUM STRIP W = 400 #/1'
- USE 1/2" WIDE PLYWOOD STRUCT. I, BLOCKED ALL EDGES
PLATE TO BLOOMING 1" X 4" SCREW @ EA. BLAG. (1/4" O.C. MAX.)
SIMP. 'ST22' STRAP @ 48" O.C.
MIN. 2" X 4" END STUDS @ 24" O.C.
MINIMUM STRIP W = 400 #/1'
- USE 1/2" WIDE PLYWOOD STRUCT. I, BLOCKED ALL EDGES
PLATE TO BLOOMING 1" X 4" SCREW @ EA. BLAG. (1/4" O.C. MAX.)
SIMP. 'ST22' STRAP @ 48" O.C.
MIN. 2" X 4" END STUDS @ 24" O.C.
MINIMUM STRIP W = 400 #/1'
- USE 1/2" WIDE PLYWOOD STRUCT. I, BLOCKED ALL EDGES
PLATE TO BLOOMING 1" X 4" SCREW @ EA. BLAG. (1/4" O.C. MAX.)
SIMP. 'ST22' STRAP @ 48" O.C.
MIN. 2" X 4" END STUDS @ 24" O.C.
MINIMUM STRIP W = 400 #/1'
- USE 1/2" WIDE PLYWOOD STRUCT. I, BLOCKED ALL EDGES
PLATE TO BLOOMING 1" X 4" SCREW @ EA. BLAG. (1/4" O.C. MAX.)
SIMP. 'ST22' STRAP @ 48" O.C.
MIN. 2" X 4" END STUDS @ 24" O.C.
MINIMUM STRIP W = 400 #/1'
- USE 1/2" WIDE PLYWOOD STRUCT. I, BLOCKED ALL EDGES
PLATE TO BLOOMING 1" X 4" SCREW @ EA. BLAG. (1/4" O.C. MAX.)
SIMP. 'ST22' STRAP @ 48" O.C.
MIN. 2" X 4" END STUDS @ 24" O.C.
MINIMUM STRIP W = 400 #/1'
- USE 1/2" WIDE PLYWOOD STRUCT. I, BLOCKED ALL EDGES
PLATE TO BLOOMING 1" X 4" SCREW @ EA. BLAG. (1/4" O.C. MAX.)
SIMP. 'ST22' STRAP @ 48" O.C.
MIN. 2" X 4" END STUDS @ 24" O.C.
MINIMUM STRIP W = 400 #/1'



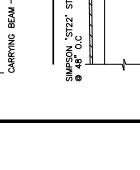
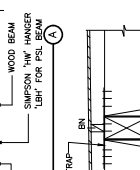
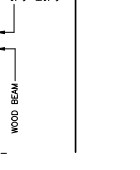
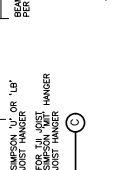
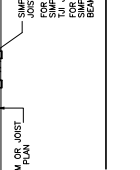
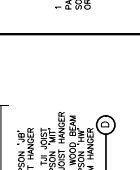
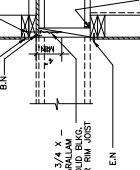
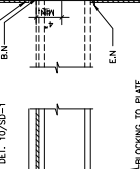
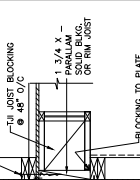
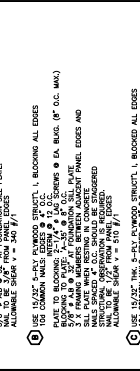
2
TYPICAL HOLD-DOWN



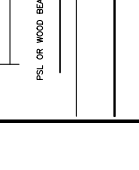
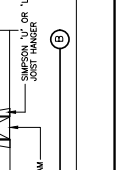
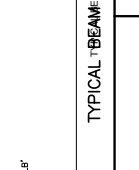
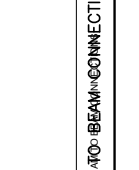
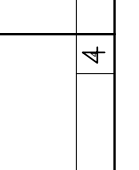
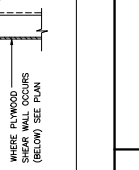
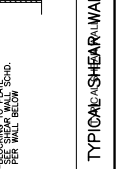
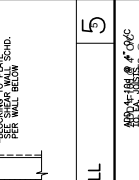
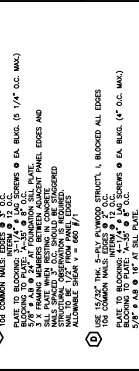
1
TYP. DOUBLE PLATE SPLICE



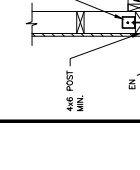
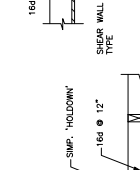
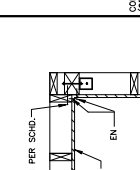
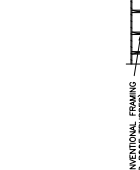
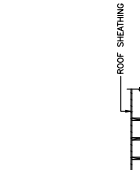
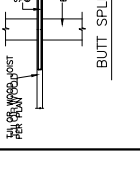
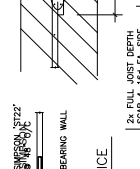
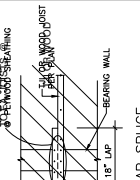
4
TYPICAL BEAM-TO-BEAM CONNECTIONS



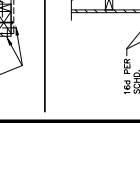
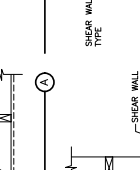
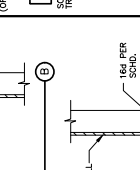
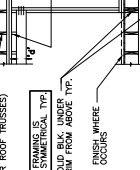
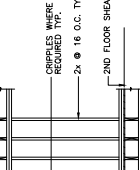
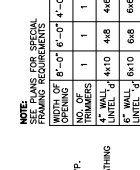
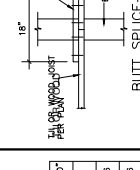
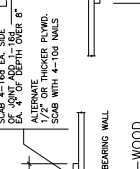
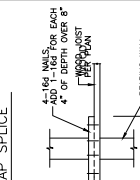
5
TYPICAL SHEAR WALL



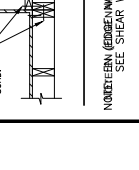
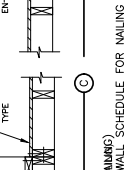
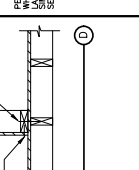
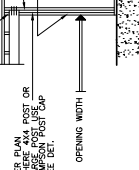
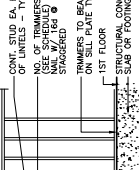
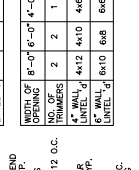
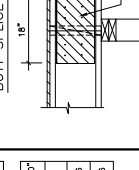
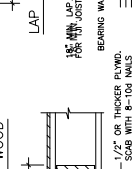
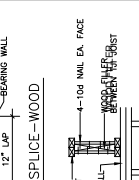
6
TYPICAL MINIMUM INTERMEDIATE DETAIL



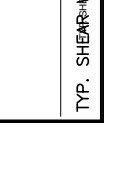
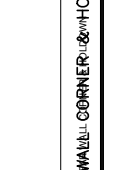
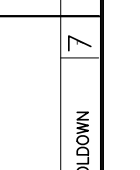
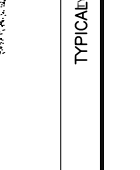
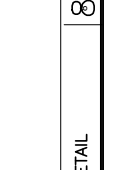
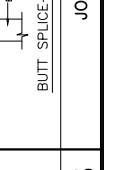
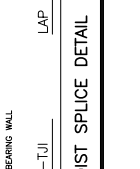
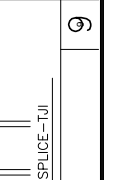
7
TYP. SHEAR WALL CORNER HOLD-DOWN



8
TYPICAL MINIMUM INTERMEDIATE DETAIL



9
JOIST SPLICE DETAIL



10
SHEAR WALL SCHEDULE



NO. 16d PER SCHD. (SEE SCHEDULE FOR NAILING)