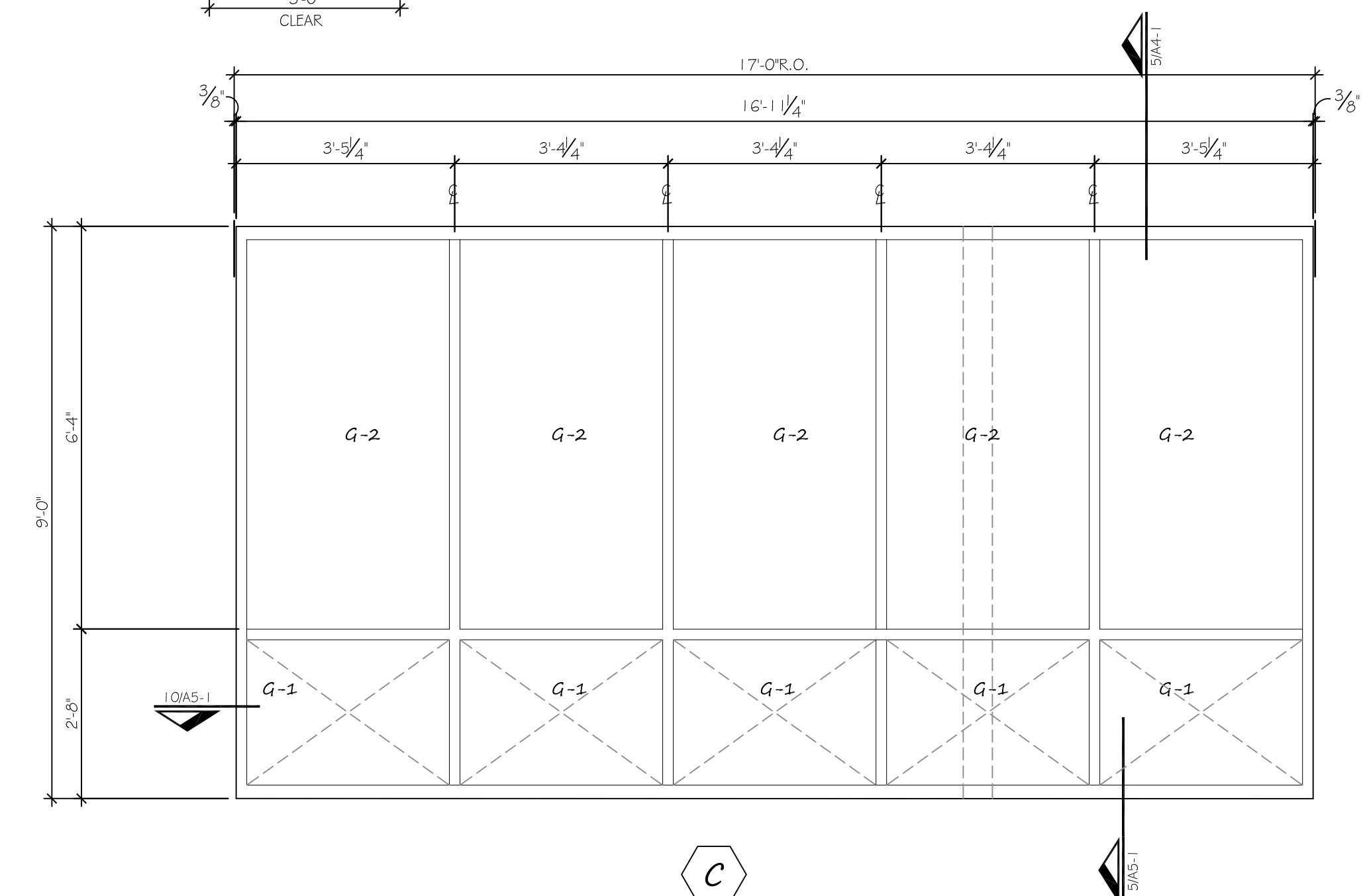
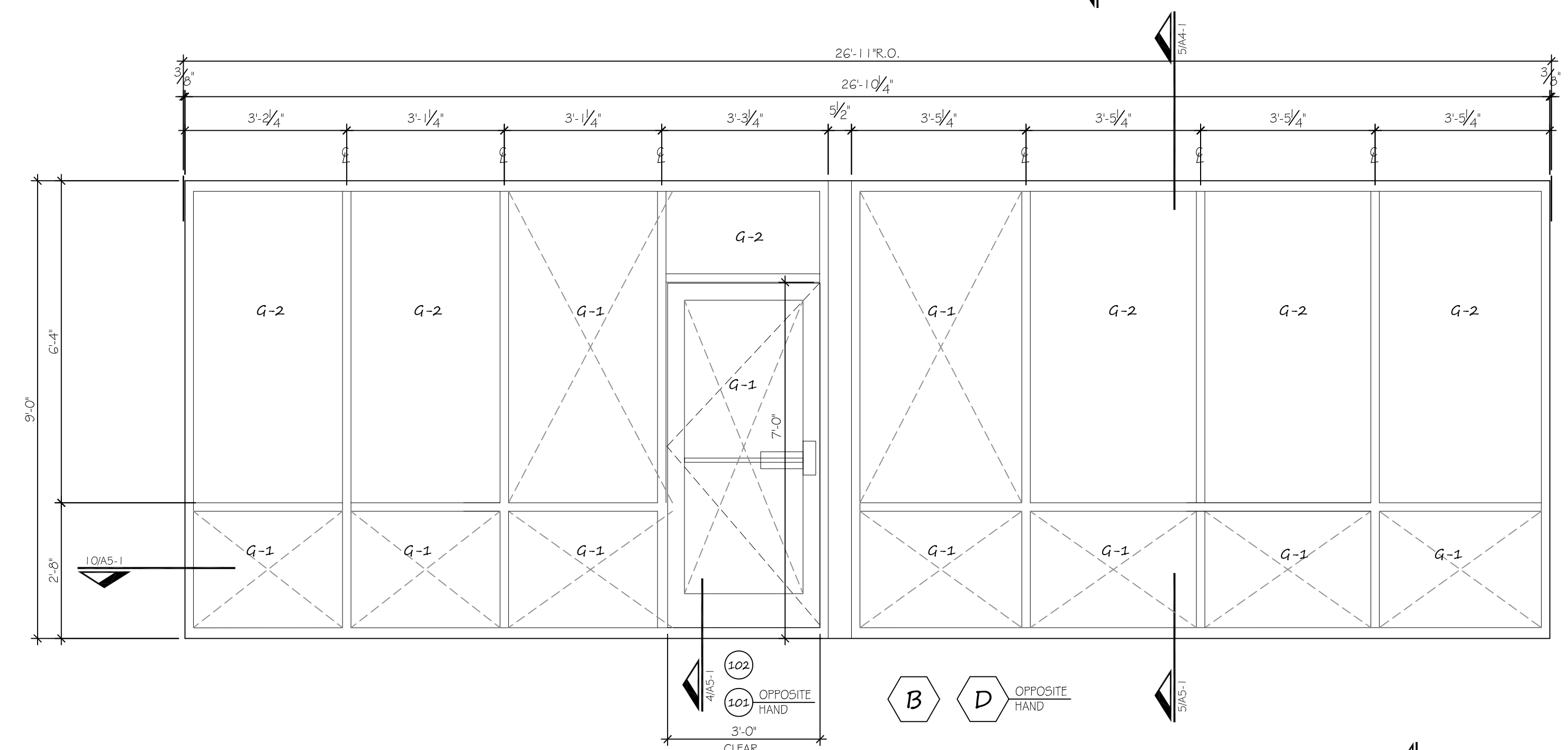
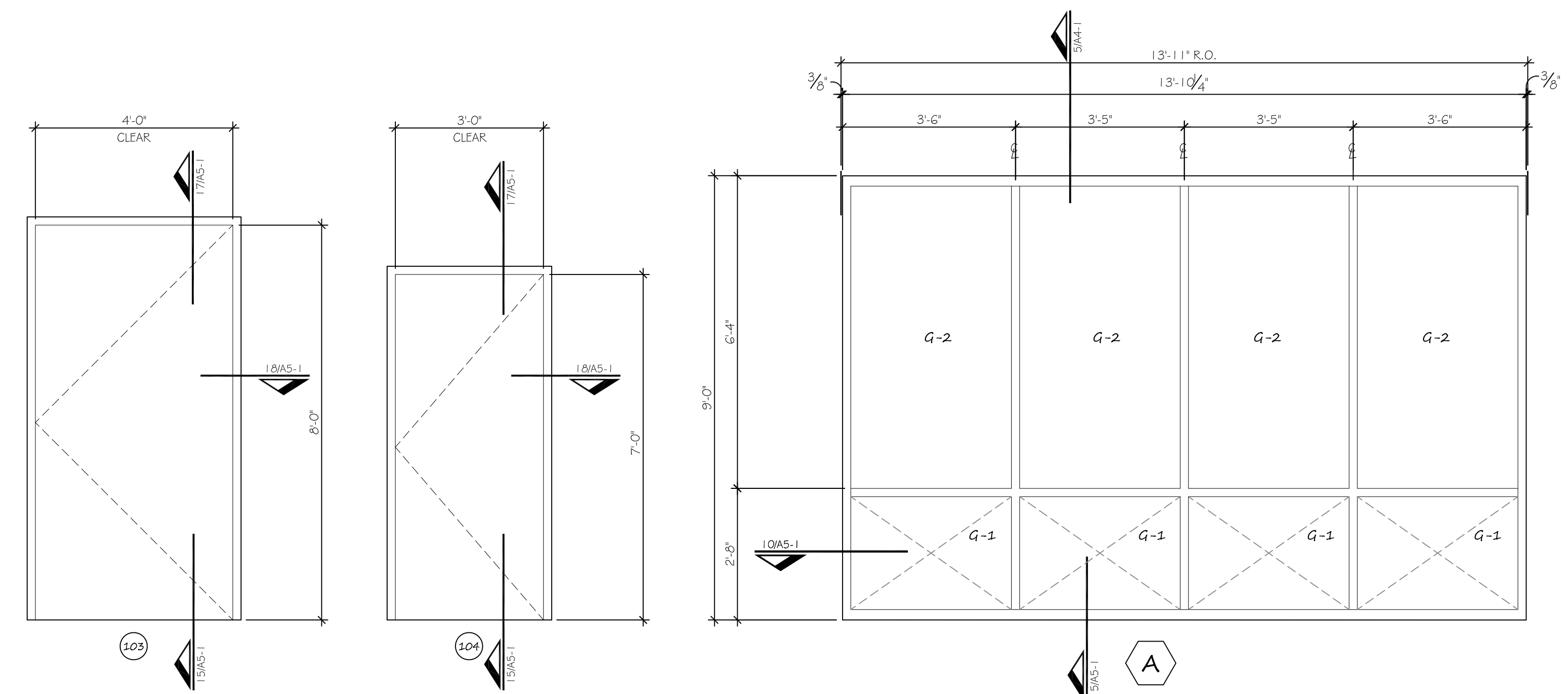


2 | **SIDEWALK PLAN**
 A7-1 | SCALE: 1/16" = 1'-0"
 NOTE: E.J. - EXPANSION JOINT
 C.J. - CONTROL JOINT
 NOTE: JOINTS ARE TO ALIGN WITH PILASTERS, TYP.

DOOR SCHEDULE							
SYMBOL	DOOR SIZE	DOOR TYPE	DOOR FINISH	FRAME	FRAME / FINISH	HARDWARE	NOTE(S)
101	3'-0" x 84" (ADA)	KAWNEER #190 MEDIUM STYLE - ALUMINUM	#14 CLEAR ANODIZED ALUMINIUM	KAWNEER #350 ALUMINIUM	#14 CLEAR ANODIZED ALUMINIUM	GROUP # 1	
102	3'-0" x 84" (ADA)	KAWNEER #190 MEDIUM STYLE - ALUMINIUM	#14 CLEAR ANODIZED ALUMINIUM	KAWNEER #350 ALUMINIUM	#14 CLEAR ANODIZED ALUMINIUM	GROUP # 1	
103	4'-0" x 8'-0" (ADA)	HM DOOR FLUSH	PAINT	METAL	PAINT	GROUP # 2	
104	3'-0" x 7'-0" (ADA)	HM DOOR FLUSH	PAINT	METAL	PAINT	GROUP # 2	
NOTES 1. -							

HARDWARE SCHEDULE BY MANUFACTURER			
GROUP	LATCH SETS / EXIT DEVICES	HINGES / PULLS	CLOSERS / SURFACE BOLTS
1	LOCKSET ADAMS RITE MS 1850S DEADLOCK W/ 5 PIN CYLINDERS	STANDARD TOP, BOTTOM & INTERMEDIATE PIVOT HINGES W/ PIVOT THRESHOLDS. MATERIAL TO BE STAINLESS STEEL	CLOSER FINISH TO MATCH FRAME, FLUSH BOLT: 2 EACH FIXED DOOR, WEATHER STRIPPING: SEALANT SYSTEM
2	PANIC HARDWARE W/ LOCKSET	CONTINUOUS HINGES W/ THRESHOLDS. MATERIAL TO BE STAINLESS STEEL	STAINLESS STEEL DOOR CLOSER, DOOR SWEEP, FLUSH BOLT: 2 EACH FIXED DOOR, PEEPHOLE, WEATHER STRIPPING: SEALANT SYSTEM

- THRESHOLDS AT DOORWAYS SHALL NOT EXCEED 1/2" IN HEIGHT. RAISED THRESHOLDS AND FLOOR LEVEL CHANGES AT ACCESSIBLE DOORWAYS SHALL BE BEVELED WITH A SLOPE NO GREATER THAN 1:2.
- HANDLES, PULLS, LATCHES, AND OTHER OPERATING DEVICES ON ACCESSIBLE DOORS SHALL HAVE A SHAPE THAT IS EASY TO GRASP WITH ONE HAND AND DOES NOT REQUIRE TIGHT GRASPING, TIGHT PINCHING, OR TWISTING OF THE WRIST TO OPERATE. LEVER-OPERATED MECHANISMS, PUSH-TYPE MECHANISMS, AND U SHAPED HANDLES ARE ACCEPTABLE DESIGNS.
- THE MAXIMUM FORCE FOR PUSHING OR PULLING OPEN AN INTERIOR HINGED DOOR SHALL BE 5 LBF.
- EGRESS DOORS: PUSH BAR TO BE MOUNTED AT 36" A.F.F. AND THE ULTRA DOG ANTI-PRY BAR TO BE MOUNTED AT 42" A.F.F.
- DOOR HARDWARE SHALL BE MOUNTED AT 36" A.F.F. AND NO HIGHER THAN 48" A.F.F.



1 | **DOOR AND WINDOW ELEVATIONS**
 A7-1 | SCALE: 1/2" = 1'-0"

GLAZING SCHEDULE	
G-1	CLEAR INSULATED TEMPERED GLAZING
G-2	CLEAR INSULATED GLAZING
MAXIMUM SHG TO BE 0.25 W/ LOW-E	

Z:\8-14-05-CRM-PAD\02-DRAWINGS\03-PILOT\A7-1 DOOR & WINDOW SCHEDULES.DWG 4/21/2016 3:34:45 PM RW

WINDLE + VOLPE
 ARCHITECTS
 165 WINDMILL DRIVE
 HOUSTON, TEXAS 77024
 PH 713-255-1390



PAD BUILDING AT THE CROSSROADS MALL
 GREENVILLE, TEXAS
GREENVILLE PROPERTIES LTD.
 GREENVILLE, TEXAS

DATE	4/21/16
PROJECT NO.	06-14-05
DRAWN BY	

DOOR & WINDOW SCHEDULES

A7-1