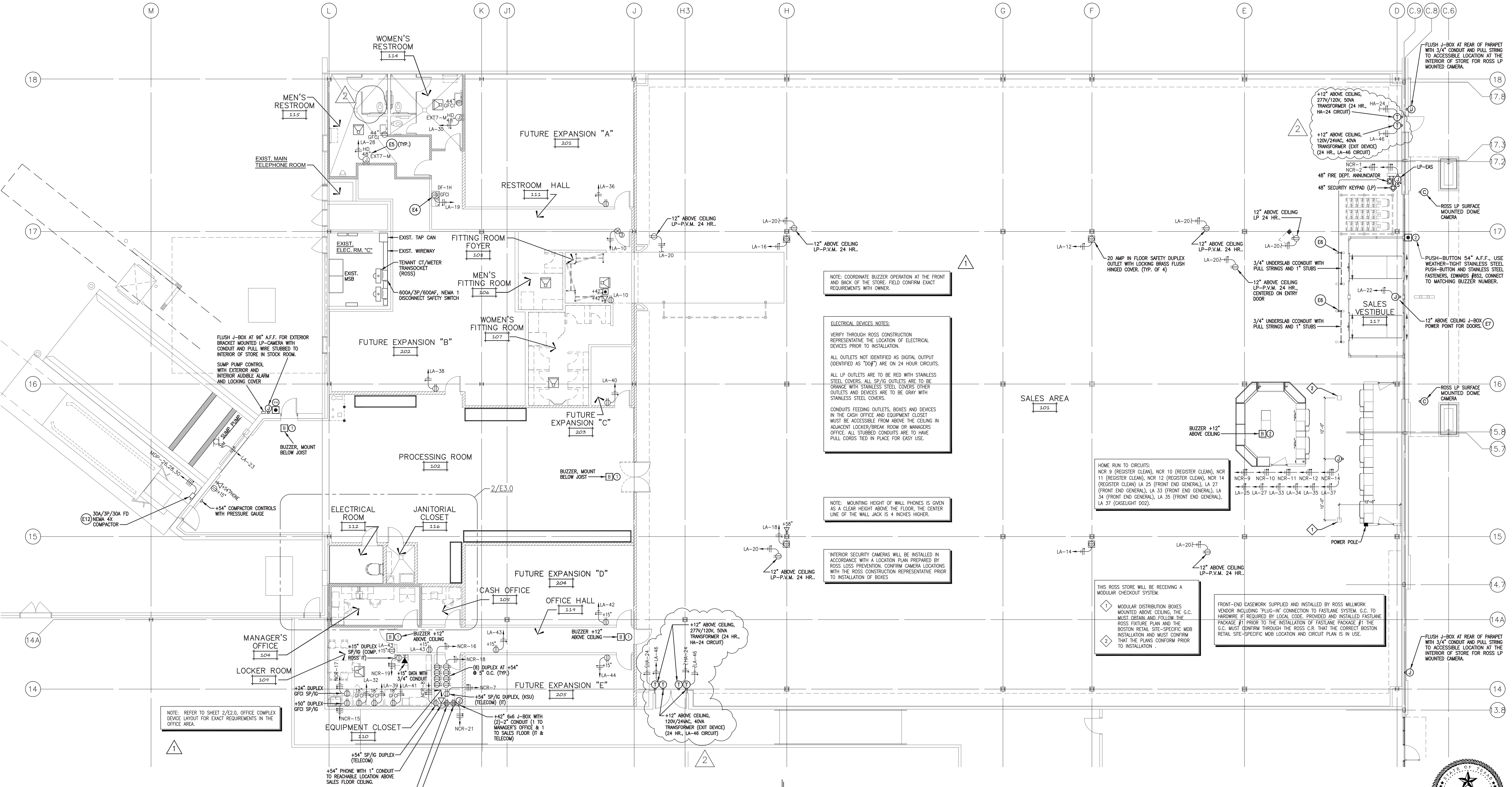
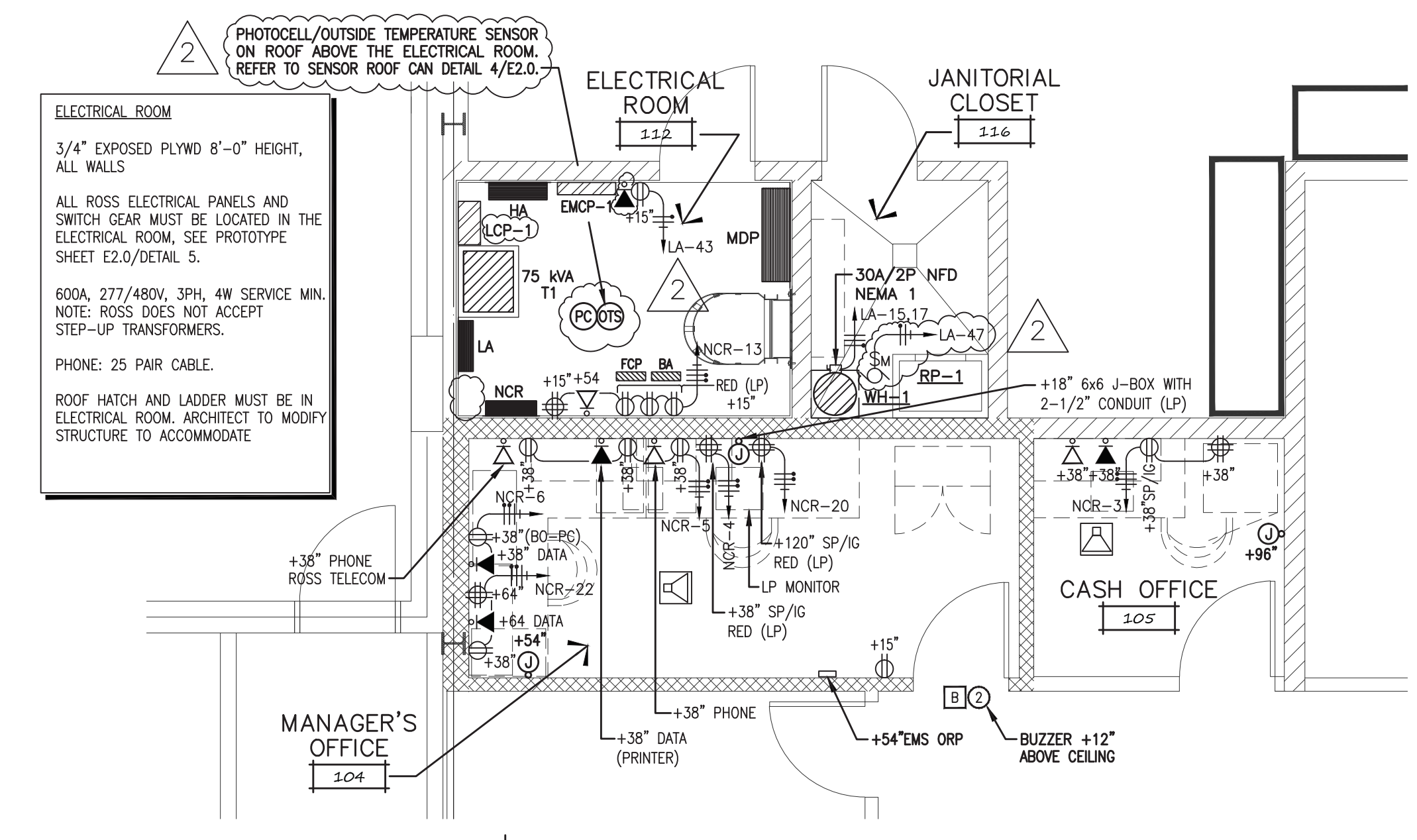


POWER, SIGNAL AND TELEPHONE LEGEND

<ul style="list-style-type: none"> PRE-FINISHED POWER POLE PROVIDED AS PART OF FRONT END MODULAR SYSTEM PROVIDED AND INSTALLED BY ROSS FIXTURE VENDOR. DUPLEX RECEPTACLE, 15" A.F.F. U.O.N. 20A 20 AMP INDEPENDENT DEDICATED CIRCUIT DUPLEX RECEPTACLE, 15" A.F.F. U.O.N. GFCI GROUND FAULT RECEPTACLE, 44" A.F.F. U.O.N. 4-LEP RECEPTACLE, MOUNTING HEIGHT AS NOTED 20 AMP IN FLOOR SAFETY DUPLEX OUTLET WITH LOCKING BRASS FLUSH HINGED COVER (INDEPENDENT DEDICATED CIRCUIT, 10 GAUGE WIRE) LIGHT SWITCH LOCATION, 42" A.F.F. GROUND ROD SP SURGE PROTECTED RECEPTACLE PASS & SEYMOUR 20A DUPLEX/MODEL I062820SP ORANGE 	<ul style="list-style-type: none"> TELEPHONE 38" AT MANAGERS, 58" A.F.F. AT SALES FLOOR/SEE 3/E3.0 FOR ROUGH-IN, U.O.N. (NOTE: SALES FLOOR PHONES ARE NOT PUBLIC PHONES AND AS SUCH MAY NOT BE REQUIRED TO BE ACCESSIBLE. ARCHITECT OF RECORD MUST VERIFY). LOCATIONS SHOWN FOR CONCEPT AND MUST BE VERIFIED THROUGH THE ROSS CONSTRUCTION REPRESENTATIVE. PRIOR TO INSTALLATION, PROVIDE PLASTER RING AND CONDUIT WITH FULL-STRING STUBBED TO ABOVE CEILING (TYPICAL OMB INSTALLATION OR SIMILAR PER MOUNTING CONDITION). COLUMN MOUNTED DEVICES ARE TO BE FED CONCEALED FROM WITHIN TUBE, CONFIRM LOCATIONS AND PROVIDE FEED HOLES WITH FULL WIRES. ROSS INSTALLER WILL PROVIDE AND INSTALL WIRE, JACK AND PHONE. DATA OUTLET, MOUNTING HEIGHT AS NOTED. (VERIFY LOCATIONS PRIOR TO INSTALLATION). PROVIDE PLASTER RING AND CONDUIT WITH FULL-STRING STUBBED TO ABOVE CEILING (TYPICAL OMB INSTALLATION OR SIMILAR PER MOUNTING CONDITION). ROSS INSTALLER WILL PROVIDE AND INSTALL WIRE & JACK. MOUNT BUZZER (OR RINGER) ABOVE CEILING AT CUSTOMER SERVICE COUNTER AND OFFICE HALL. WALL MOUNTED (48"-57" A.F.F.) ALL OTHER LOCATIONS. CONNECT TO PUSH BUTTON OF MATCHING NUMBER. SOUND OF THE BUZZER (OR RINGER) FOR NUMBER 1 BUTTON MUST BE DIFFERENT THAN THAT FOR NUMBER 2 BUTTON. BUZZER (OR RINGER) SOUND LEVELS MUST BE ADJUSTABLE AND BE AUDIBLE WITHIN 75-FOOT OF LOCATION, 24 VOLT SYSTEM. T.T.B. TELEPHONE TERMINAL BOARD 	<ul style="list-style-type: none"> PUSH-BUTTON 54" A.F.F. USE WEATHER-TIGHT STAINLESS STEEL PUSH-BUTTON AND STAINLESS STEEL FASTENERS, EDWARDS #852, (203) 699-3000. CONNECT TO MATCHING BUZZER NUMBER VON DUPRN MODEL 6211 ELECTRIC STRIKE WITH LOCKNETICS (SCHLAGE) 701 RO MOMENTARY WALL SWITCH (800) 950-4573. 48" SECURITY KEYPAD. PROVIDE J-BOX WITH 3/4" CONDUIT STUBBED TO ACCESSIBLE LOCATION ABOVE CEILING WITH FULL-STRING, KEYPAD AND WIRING BY ROSS INSTALLER. JUNCTION BOX, MOUNTING HEIGHT AS NOTED. TRANSFORMER, MOUNTING HEIGHT AS NOTED SURFACE MOUNTED DOME CAMERA FIRE DEPARTMENT ANNUNCIATOR HURRICANE SHUTTER CENTER PAD
---	---	--

- FIRE ALARM, SMOKE DETECTION & SECURITY SYSTEM NOTES**
- IT SHALL BE THE RESPONSIBILITY OF THE ELECTRICAL CONTRACTOR TO PROVIDE ALL CONDUIT SYSTEMS, STANDARD ELECTRICAL BOXES, AND OPERATING POWER FOR THE FIRE ALARM AND SECURITY SYSTEMS.
 - FIRE ALARM AND SECURITY SYSTEMS INSTALLER TO PROVIDE A SEPARATE DRAWINGS SHOWING ALL DEVICES, COORDINATE AND CONFIRM WITH ARCHITECT, ELECTRICAL CONTRACTOR, GENERAL CONTRACTOR AND/OR OWNER PRIOR TO SUBMIT BIDDING.
 - ALL FIRE ALARM STROBES, HORNS AND/OR DEVICES IN THE SALES AREA SHALL BE LOCATED IN THE CEILING AND NOT THE COLUMNS AS PERMITTED BY CODES.
 - THE PROTOTYPE FIRE ALARM CONTROL PANEL IS BOSCH D7024. NO EXCEPTIONS.

- TELEPHONE CABLES NOTES**
- GENERAL CONTRACTOR TO PROVIDE AND/OR EXTEND 25 PAIR TELEPHONE CABLES AND PUNCH DOWN DEMARK FROM LANDLORD ROOM TO ELECTRICAL ROOM 112. FIELD CONFIRM EXACT LOCATION OF DEMARK. PRIOR TO MAKE FINAL INSTALLATION.



POWER, SIGNAL & TELEPHONE FLOOR PLAN
E3.0 SCALE: 1/8" = 1'-0"

ADDENDUM #1 5-02-14
ADDENDUM #2 9-18-14
ISSUED FOR CONSTRUCTION
MARCH 3, 2015

WINDLE + VOLPE
ARCHITECTS
HOUSTON, TEXAS 77065
PH 713-251-1990
HOUSTON, TEXAS 77065
7650 WINDYBITE, SUITE 200

CAI
ENGINEERS
10700 WICHAMOND AVE., SUITE 145
HOUSTON, TEXAS 77042
TEL: (713) 788-8388 FAX: (713) 788-0909

ROSS BUILD-OUT #1663
CROSSROADS MALL
GREENVILLE, TEXAS
GREENVILLE PROPERTIES LTD.
GREENVILLE, TEXAS

DATE: 02/02/2014
PROJECT NO.: 06-152-02
DRAWN BY: LLL

POWER, SIGNAL & TELEPHONE FLOOR PLANS & LEGEND
E3.0

