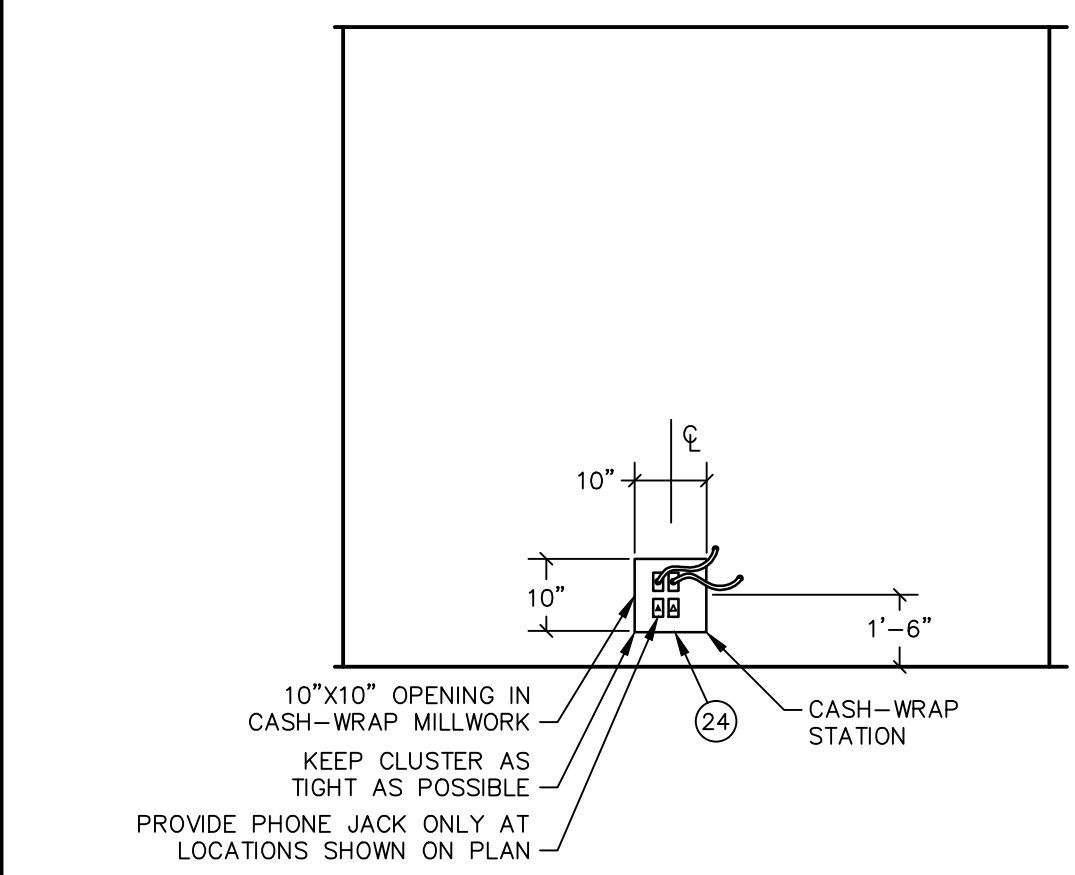
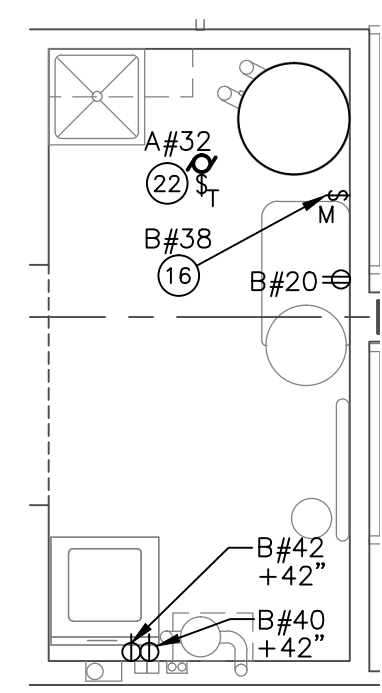
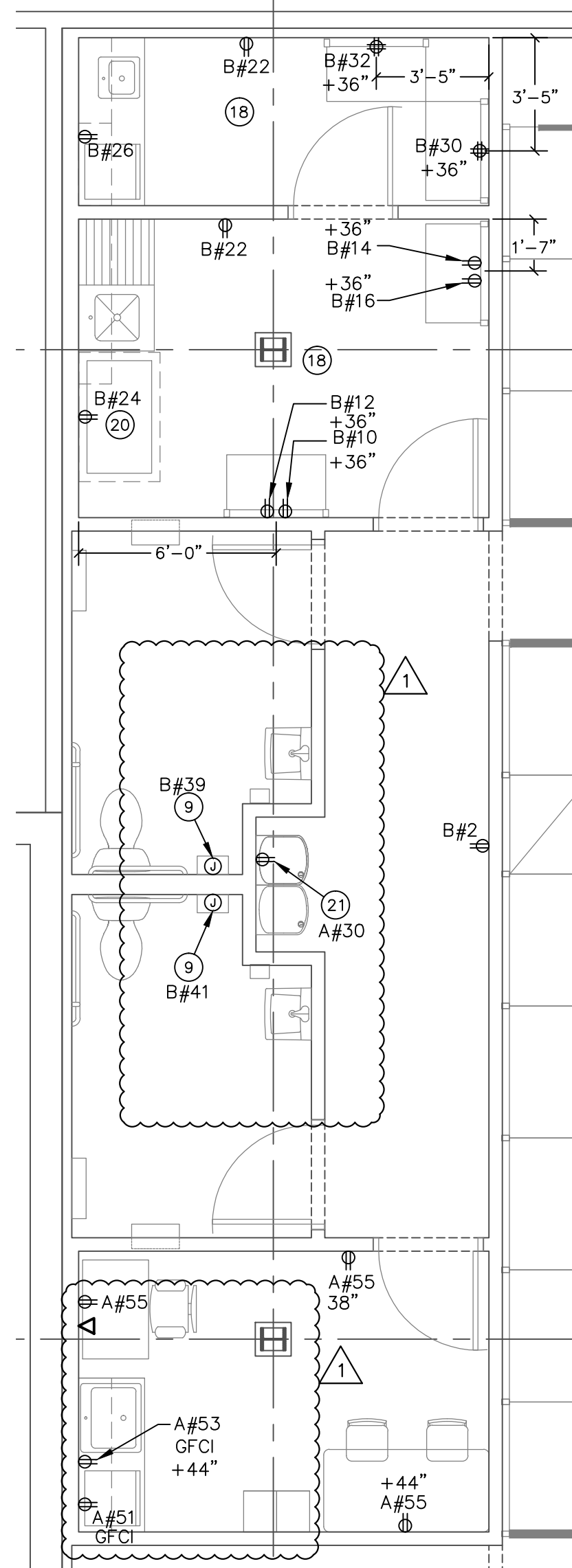
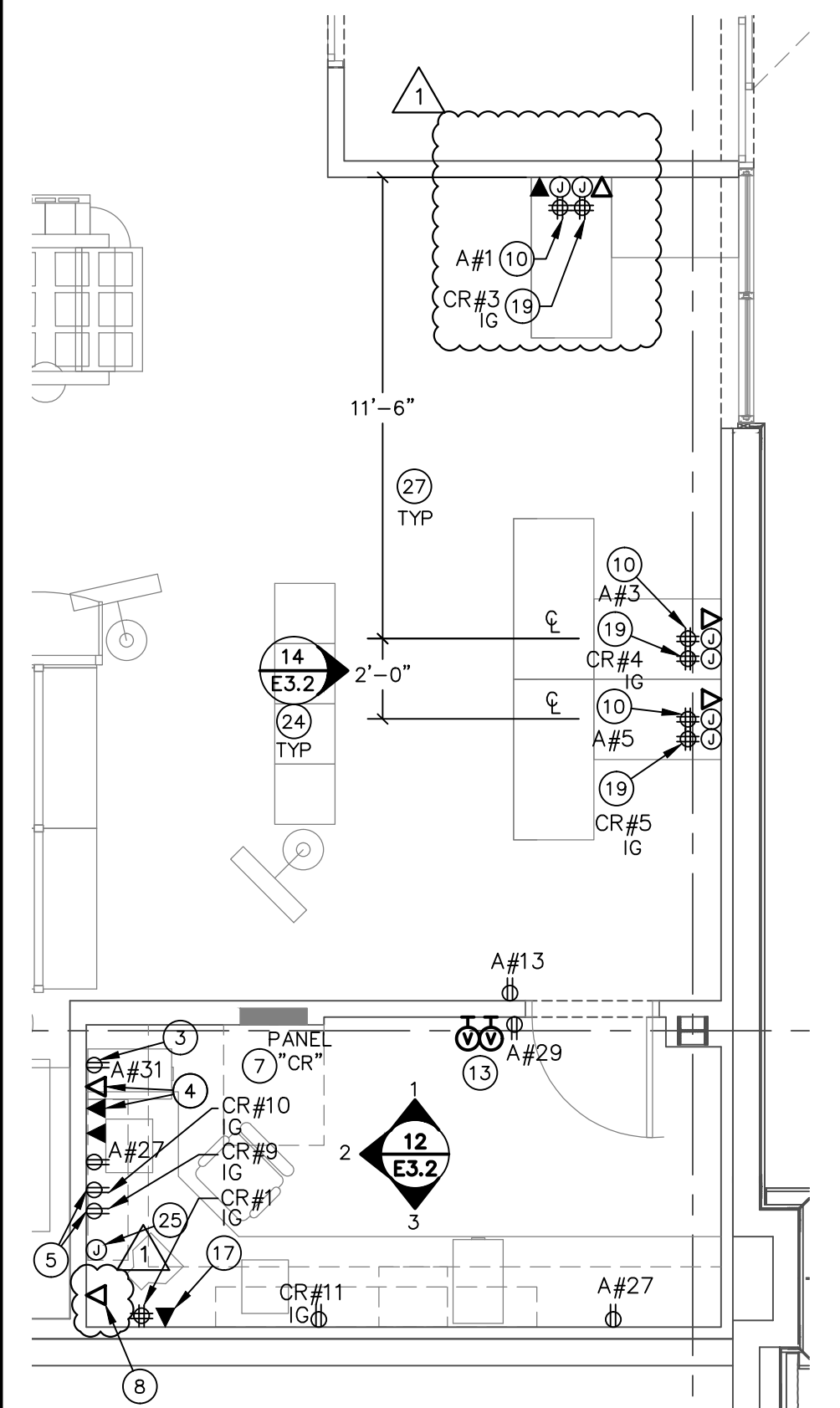


CONTRACTOR(S) SHALL VERIFY EXISTING CONDITIONS AND CORRELATE DIMENSIONS PRIOR TO PROVIDING THE WORK DETAILED IN THESE DRAWINGS. AND SHALL PROMPTLY NOTIFY THE ARCHITECT OF ANY DISCREPANCIES.
 © COPYRIGHT SBLM, ARCHITECTS PC. UNAUTHORIZED REPRODUCTION OR OTHER USE OF THIS DRAWING IS PROHIBITED.



NOTES:
 TYPICAL CASH WRAP DETAIL. VERIFY NUMBER AND LOCATION WITH ARCHITECTURAL PLANS. PROVIDE ADDITIONAL BRANCH CIRCUITS AS NECESSARY.
 THIS DETAIL IS SCHEMATIC IN NATURE. REFER TO FURNITURE LAYOUT AND ORIENTATION, AND FOR ROOM LOCATION FOR CONDUIT DESTINATION.

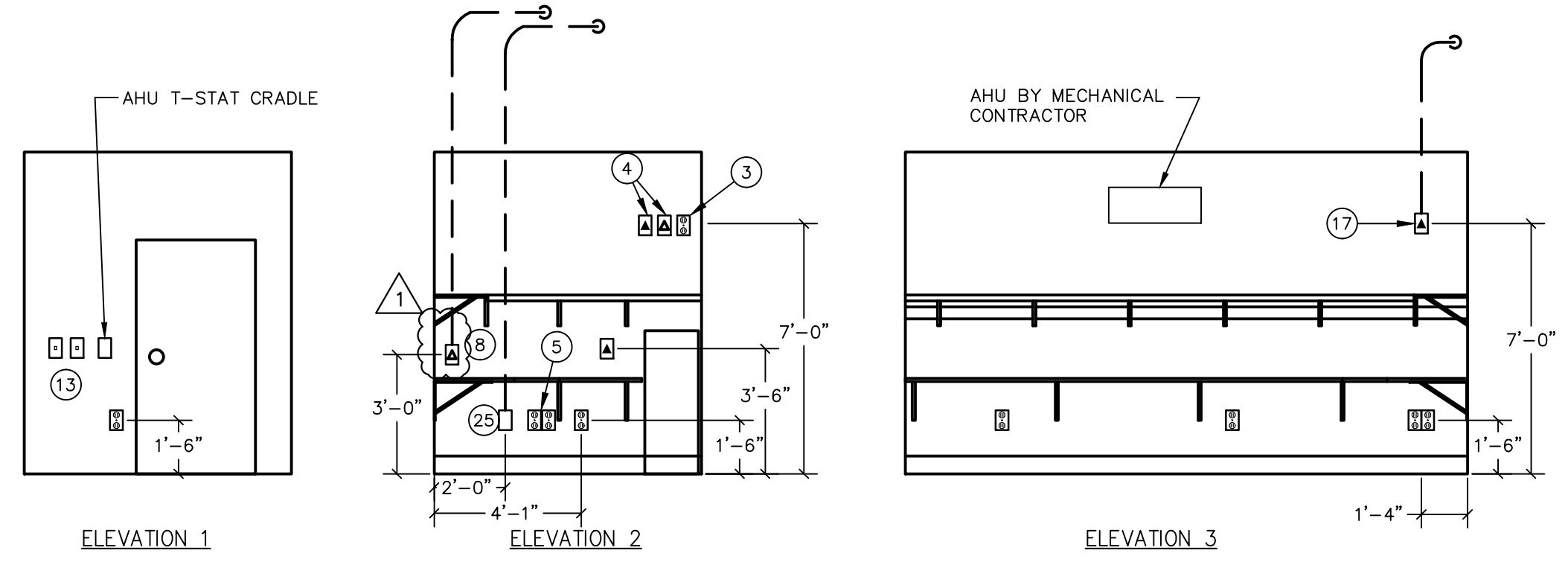
CASH-WRAP DEVICE MOUNTING DETAIL 14
 REF.: 04/E3.2 NO SCALE



LARGE SCALE OFFICE / CASHWRAP PLAN 04
 REF.: 06/E2.2 1/4"=1'-0"

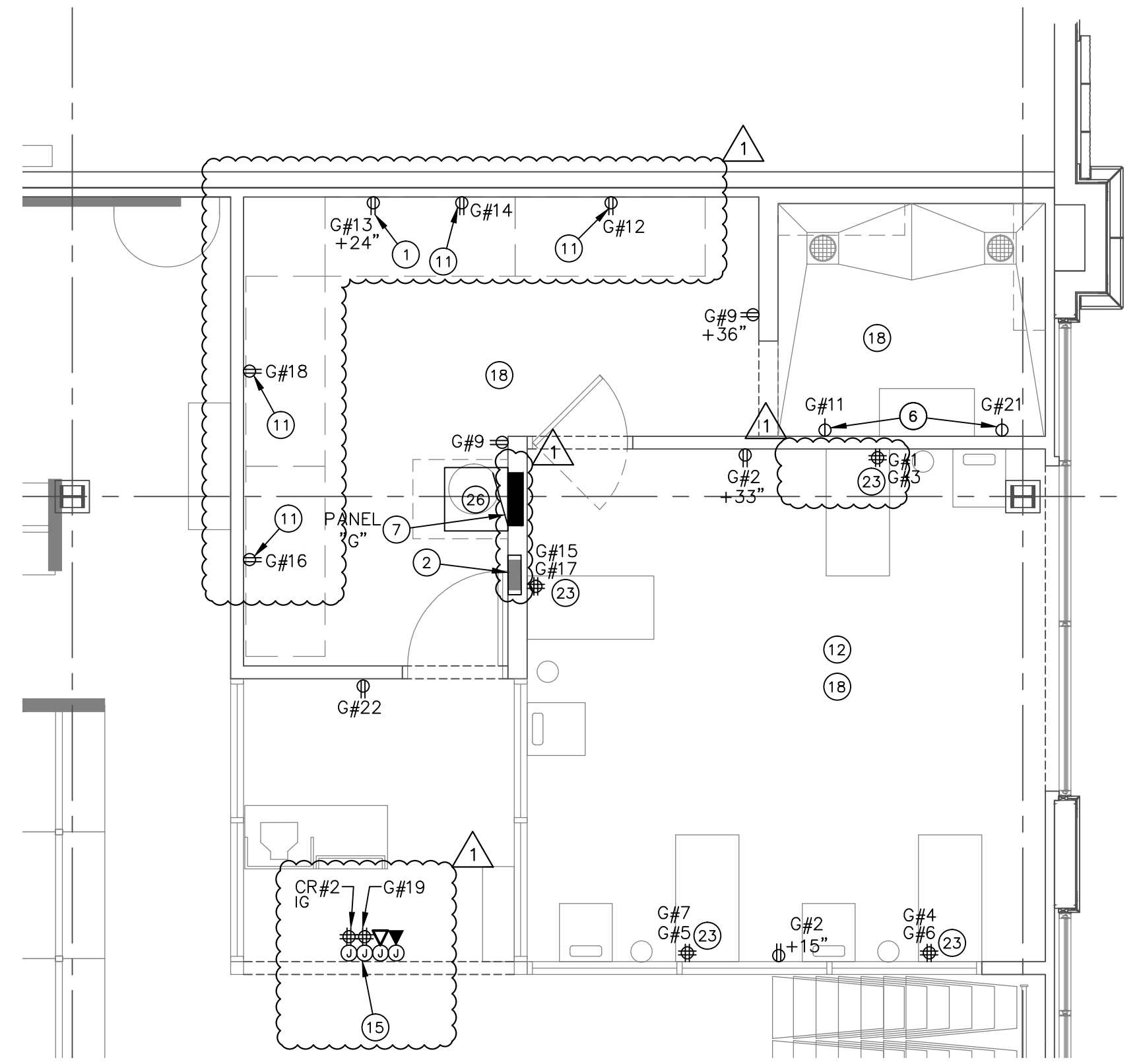
NOTES FOR THIS DRAWING

- ALL POWER POLES, OTHER THAN THE CASHIER AREA, ARE BY THE CONTRACTOR. SEE SHEET E2.2 FOR SALES AREA POWER POLE LOCATIONS.
- ALL DEVICES NOT SPECIFICALLY DIMENSIONED MAY BE LOCATED +/- 8" IN EITHER DIRECTION IN PLAN FROM THEIR APPROPRIATE LOCATION SHOWN (TO NEAREST STUD OR NEAREST CMU CORE).
- CONTRACTOR SHALL RETURN TO THE SITE TO MAKE FINAL CONNECTIONS TO PETCO'S EQUIPMENT AS NECESSARY.



NOTES:
 1. DEVICES DIMENSIONED LATERALLY SHALL BE LOCATED +/- 2" FROM LOCATION INDICATED.
 2. DEVICES NOT DIMENSIONED LATERALLY MAY BE FASTENED TO NEAREST STUD.

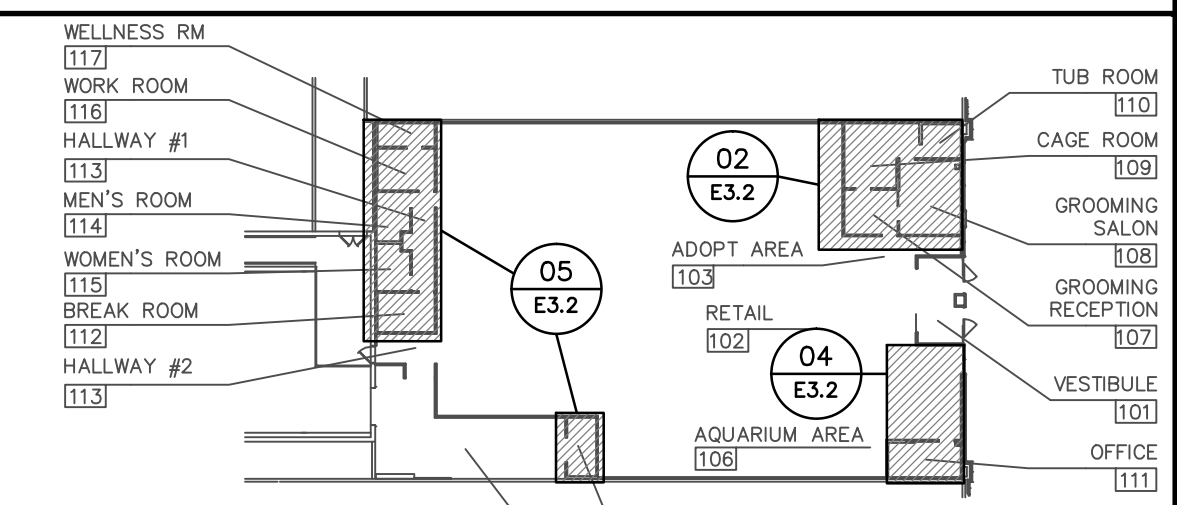
OFFICE WALL ELEVATIONS 12
 REF.: 04/E3.2 1/4"=1'-0"



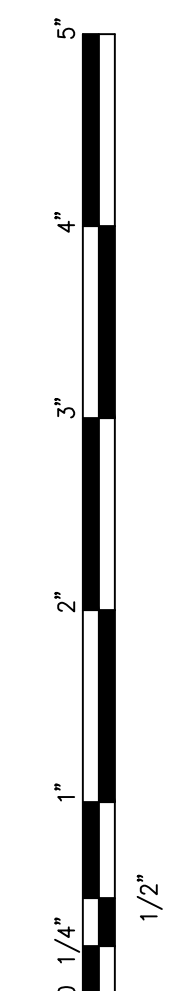
LARGE SCALE GROOMING AREA PLAN 02
 REF.: 06/E2.2 1/4"=1'-0"

KEYNOTES (SYMBOLS ①, ② ETC.)

- DEDICATED NEMA 5-20R RECEPTACLE FOR FAN CAGE G#13, 24" AFF.
- TIMER ASSEMBLY BY INTEGRATED POWER AND CONTROL ASSEMBLY MANUFACTURER. WIRE (T) CIRCUITS AS SHOWN ON PANELBOARD "G" SCHEDULE TO TIMERS. ONE TIMER FOR EACH CIRCUIT. LABEL EACH TIMER FOR CIRCUIT NUMBER. MOUNT SUCH THAT CENTERLINE OF BOX IS AT 48" AFF.
- SOUND SYSTEM 7'-0" AFF. VERIFY EXACT LOCATION IN FIELD.
- EQUIPMENT FOR SOUND SYSTEM AT 7'-0". VERIFY LOCATION IN FIELD.
- DUPLEX RECEPTACLES UNDER THE COUNTER FOR SECURITY EQUIPMENT. CIRCUIT AS SHOWN.
- WEATHERPROOF RECEPTACLE WITH IN-USE COVER. THOMAS & BETTS RED DOT #CKNM-NG. MOUNT AT 48" AFF.
- COORDINATE LOCATION OF THIS ELECTRIC PANEL WITH PROVISIONS FOR OTHER TRADES, SUCH AS WOOD BLOCKING FOR GENERAL CONTRACTOR'S USE.
- DATA OUTLETS IN THIS AREA SHALL BE MOUNTED 42" AFF. CONDUITS TO TERMINATE IN FREE AIR AT BOTTOM OF ROOF STRUCTURAL MEMBERS OF RETAIL SIDE OF MANAGER'S OFFICE WALL.
- MOUNT BOTTOM OF JUNCTION BOX AT 50" AFF FOR HARD WIRED CONNECTION TO ELECTRIC HAND DRYER. VERIFY EXACT LOCATION WITH ARCHITECTURAL DRAWINGS.
- JUNCTION BOX WITH 6'-0" FLEXIBLE CONDUIT WHIP AND QUAD RECEPTACLE LOCATED WITHIN CASH WRAP MILLWORK PER MANUFACTURER'S INSTRUCTIONS FOR LIGHT FIXTURE AND OTHER GENERAL OUTLET CIRCUIT.
- DEDICATED RECEPTACLE FOR 2-HOSE DRYER (TYPICAL). 84" AFF TO BOTTOM OF DEVICE.
- DEVICES IN THIS ROOM SHALL HAVE STAINLESS STEEL DEVICE COVER PLATES.
- JUNCTION BOXES FOR SOUND SYSTEM VOLUME CONTROLS. REFER TO SHEET E2.3 FOR FURTHER INFORMATION.
- NOT USED.
- JUNCTION BOX WITH 6'-0" FLEXIBLE CONDUIT WHIP AT FLOOR LEVEL FOR POWER AND COMMUNICATION WHIPS TO DEVICES IN GROOMING RECEPTION DESK. ROUTE CONDUITS HORIZONTALLY IN HALF-WALL TO NEAREST FULL HEIGHT WALL WHERE REQUIRED. QUAD RECEPTACLES WITHIN CASH WRAP MILLWORK PER MANUFACTURER INSTRUCTIONS, (1) FOR GENERAL USE AND (1) FOR CASH REGISTER AND CARD READER. ALL "CR" CIRCUITS ARE ISOLATED GROUND.
- DISCONNECT FOR DOMESTIC HOT WATER HEATER. PROVIDE #3/0 BONDING JUMPER BETWEEN HOT AND COLD WATER PIPES. REMOVE FACTORY CORD AND PLUG AND HARD WIRE TO DISCONNECT SWITCH.
- SINGLE GANG JUNCTION BOX WITH 3/4" CONDUIT TO BAR JOIST FOR ANALOG TELEPHONE.
- CONVENIENCE RECEPTACLES IN THIS ROOM ARE GFCI PROTECTED AT THE ELECTRICAL PANEL. LABEL CIRCUITS ON ALL DEVICES.
- JUNCTION BOX WITH 6'-0" FLEXIBLE CONDUIT WHIP AND DEDICATED ISOLATED GROUND QUAD RECEPTACLE WITHIN CASH WRAP MILLWORK LOCATED PER MANUFACTURER'S INSTRUCTIONS FOR CASH REGISTER AND CARD READER. ALL "CR" CIRCUITS ARE ISOLATED GROUND.
- THIS RECEPTACLE IS DEDICATED TO THE WORK ROOM FREEZER. CONFIRM LOCATION WITH FINAL FIXTURE PLAN.
- OUTLET FOR WATER COOLER TO BE GRAY IN COLOR.
- THERMAL SWITCH, SQUARE D #2510 CLASS OR EQUAL.
- QUAD RECEPTACLE TO BE MOUNTED ADJACENT TO MIRROR IN CENTER OF TOP TILE BAND AT 45" TO CENTER OF BOX. COORDINATE WITH MIRROR LOCATION ON ARCHITECTURAL ELEVATION SHEET A9.2. IF QUAD RECEPTACLE IS LOCATED AT GLAZING, REDUCE MOUNTING HEIGHT TO 39" TO CENTER OF BOX.
- POWER, TELEPHONE AND DATA PROVISIONS FOR EACH CASH-WRAP STATION TO BE LOCATED ON WALL TO COORDINATE WITH 10" X 10" OPENING AT THE END OF THE CASH-WRAP MILLWORK. KEEP CLUSTER TIGHT WITHIN 10" X 10" AREA. COORDINATE WITH 14/E3.2 AND ARCHITECTURAL SHEET A2.3. MOVE DEVICE CLUSTER HORIZONTALLY AS NECESSARY WITHIN THE 10" SQUARE DESIGNATED ARE TO AVOID CONFLICT WITH WALL STUDS.
- 4"x4"x3" JUNCTION BOX UNDER COUNTER WITH 2" CONDUIT UP TO STRUCTURE FOR CCTV.
- INSTALL TRANSFORMER ABOVE CEILING AT LOCATION SHOWN. REFER TO DETAIL 17 ON SHEET E1.3 FOR MORE INFORMATION.
- DIMENSION INDICATED IS TO CENTERLINE OF DEVICE CLUSTER. SEE 14/E3.2.

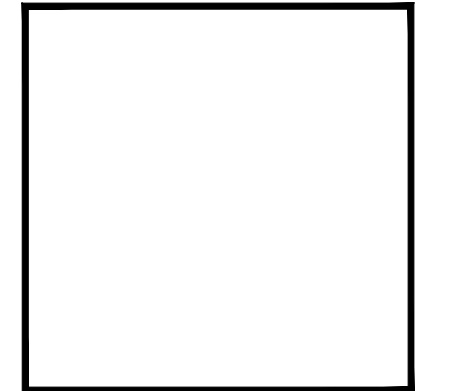


KEY PLAN 01
 REF.: NO SCALE



LARGE SCALE SUPPORT AREA PLAN 05
 REF.: 06/E2.2 1/4"=1'-0"

ACERTUS CONSULTING GROUP, LLC
 14817 West 95th Street • Lenexa, Kansas 66215
 P 913 322 5150 • F 913 322 5155
 www.AcertusGroup.com
 Registered Engineering Firm
 E-11902



petco.
 PETCO ANIMAL SUPPLIES STORES, INC. 6834 WESLEY STREET GREENVILLE, TX 75402
 PETCO "GREENVILLE, TX"

DISTRIBUTION	DATE
25% SUBMISSION	06-28-11
75% SUBMISSION	08-11-11
98% SUBMISSION	08-16-11
100% SUBMISSION	09-23-11
PERMIT SET	09-28-11
FINAL PERMIT SET	09-20-13
BULLETIN #1	10-22-14

DRAWING TITLE:
 ELECTRICAL LARGE SCALE PLANS AND DETAILS
E3.2