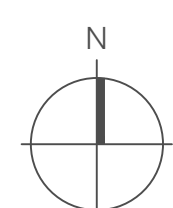
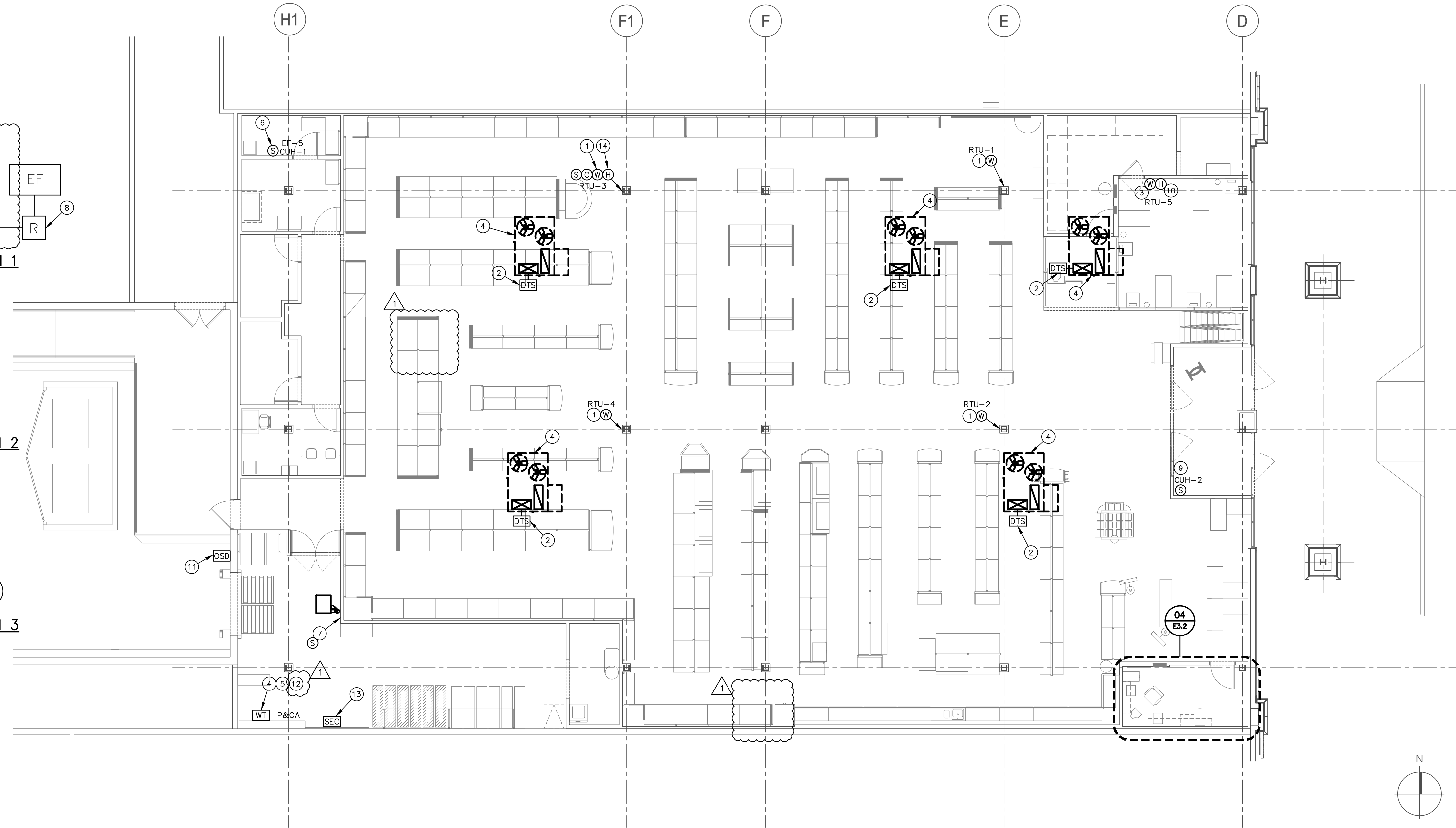
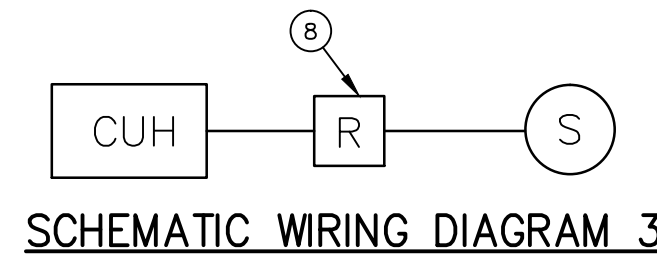
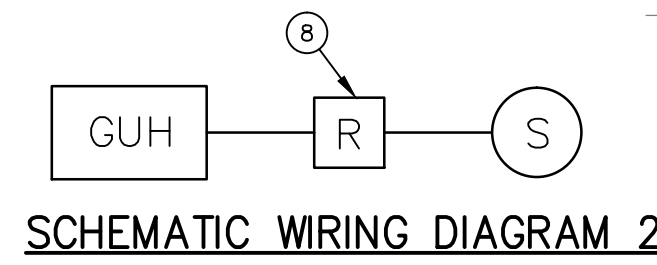
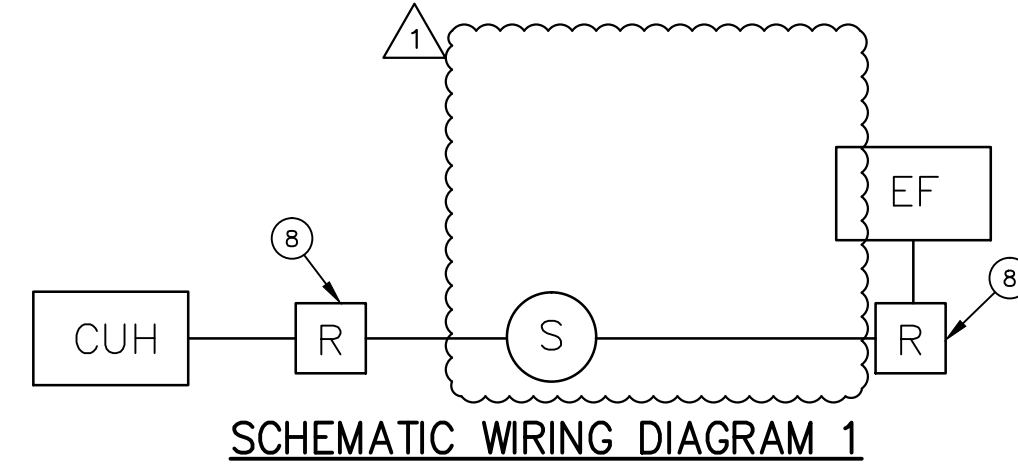


CONTRACTOR(S) SHALL VERIFY EXISTING CONDITIONS AND CORRELATE DIMENSIONS PRIOR TO PROVIDING THE WORK DETAILED IN THESE DRAWINGS. AND SHALL PROMPTLY NOTIFY THE ARCHITECT OF ANY DISCREPANCIES.
 © COPYRIGHT SBLM, ARCHITECTS P.C. UNAUTHORIZED REPRODUCTION OR OTHER USE OF THIS DRAWING IS PROHIBITED.



NOTES FOR THIS DRAWING

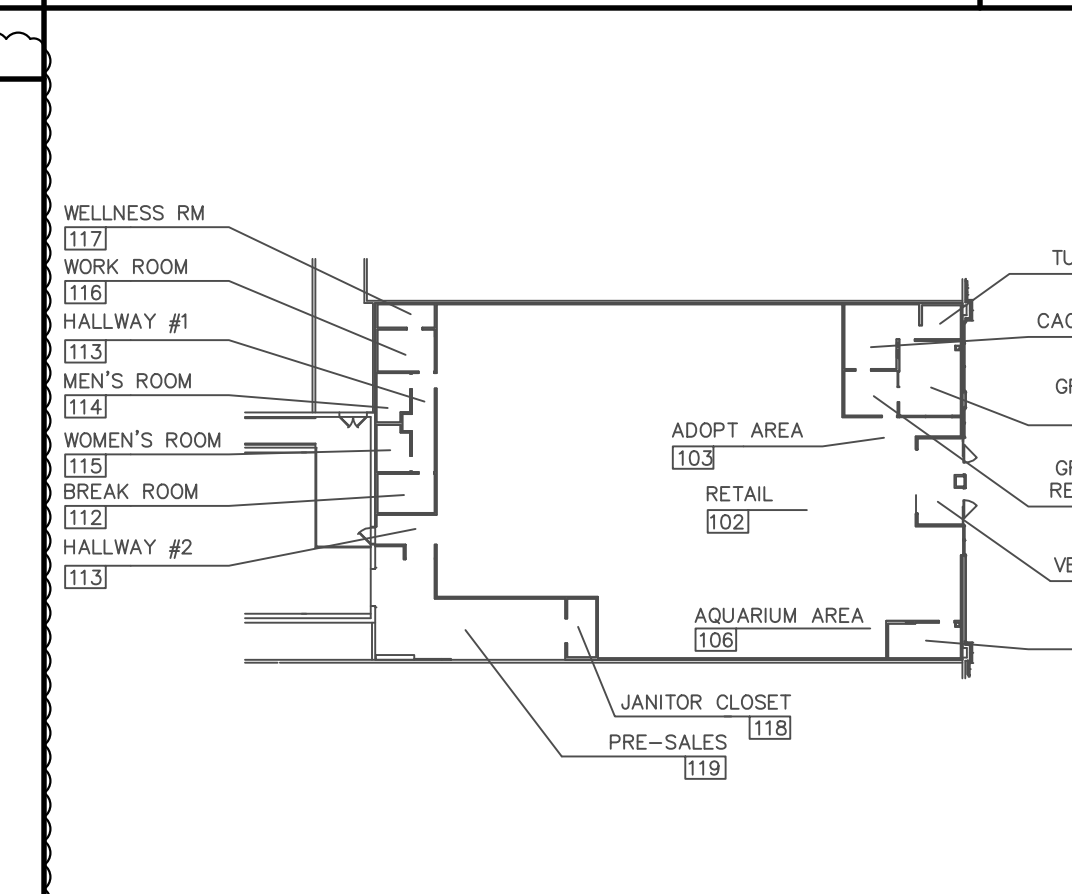
- REFER TO SHEET EMS1.1 FOR ADDITIONAL CONTROL SYSTEM INFORMATION. REFER TO SHEET E1.3 FOR CONTACTOR SCHEDULE.
- REFER TO EMS VENDOR INSTALLATION WIRING DIAGRAMS FOR WIRE TYPES AND POINT-TO-POINT TERMINATIONS.
- NO SENSOR WIRING SHALL BE INSTALLED UNSUPPORTED BY TIE-WRAPPS, OR CONDUIT.
- ALL SENSOR WIRING INSTALLED EXPOSED BELOW THE BOTTOM OF THE CHORD OF BAR JOIST SHALL BE INSTALLED IN EMT CONDUIT OR SHALL BE CONCEALED BEHIND WALLS OR CEILINGS OR INSTALLED THROUGH HOLLOW MULLIONS.
- ALL JUNCTION BOXES INSTALLED EXPOSED ON SALES FLOOR AND WALL MOUNTED BELOW 7'-0" AFF SHALL BE DIE-CAST ALUMINUM WEATHERPROOF JUNCTION BOXES WITH 3/4" INLETS ON TOP/BOTTOM/BACK ONLY; BELL 5386 SERIES OR EQUAL.
- E.C. TO VERIFY LOCAL REQUIREMENTS FOR LOW VOLTAGE SYSTEMS WIRING AND PROVIDE CONDUIT(S) WHERE REQUIRED.

KEYNOTES (SYMBOLS ①, ② ETC.)

- LOCATE 2"x4"x2" JUNCTION BOX WITH SINGLE GANG PLASTER RING IN RETAIL AREA AT 72" AFF. WHERE POSSIBLE DO NOT LOCATE CONTROLLER DIRECTLY IN AIR STREAM OF ANY ROOFTOP UNIT. INSTALL 4"x4" JUNCTION BOX BELOW RTU (BELOW CEILING WHERE APPLICABLE). INSTALL 3/4" CONDUIT FROM SENSOR JUNCTION BOX TO JUNCTION BOX BELOW ROOFTOP UNIT, AND FROM THAT JUNCTION BOX TO ROOFTOP UNIT. INSTALL 22/2 CABLE FROM THIS LOCATION TO THE RESPECTIVE ROOFTOP UNIT'S CONTROL SECTION. LABEL WIRE "ZONE" AND COIL 6' IN THE UNIT'S CONTROL SECTION.
- SUPPLY AIR DUCT TEMPERATURE SENSOR (RTS-UVC) SUPPLIED AND FACTORY INSTALLED AND WIRED BY ROOFTOP UNIT MANUFACTURER.
- TEMPERATURE CONTROLLER JUNCTION BOX AT 60" AFF AND HUMIDITY SENSOR JUNCTION BOX AT 54" AFF.
- PROVIDE 22/2 SHIELDED CABLE IN ACCORDANCE WITH EMS1.1 NOTES, IN A DAISY CHAIN STYLE, FROM THE OPUS LOCATION TO EACH ROOFTOP UNIT'S CONTROL SECTION FINISHING AT THE GROOMING UNIT. LEAVE 6' AT THE OPUS LOCATION. LEAVE 3' IN EACH ROOFTOP UNIT CONTROL SECTION AND LABEL WIRES WITH UNIT NUMBER THEY ARE RUN TO. THESE WIRES ARE TO BE RUN FROM THE CEILING SPACE TO THE ROOFTOP UNIT IN THEIR OWN RACEWAY. DO NOT RUN LOW VOLTAGE WIRES INSIDE THE POWER CONDUIT.
- LEAVE AT LEAST SIX FEET (6') OF CABLE COILED UP FOR EACH CABLE RUN TO OPUS.
- WELLNESS ROOM TEMPERATURE SENSOR (FTS-4) MOUNTED AT 54" AFF. INSTALL 22/8 CABLE FROM THIS LOCATION TO OPUS CONTROLLER. SEE WIRING DIAGRAM 1.
- UNIT HEATER TEMPERATURE SENSOR (FTS-4) MOUNTED AT 54" AFF. INSTALL 22/8 CABLE FROM THIS LOCATION TO OPUS CONTROLLER. SEE WIRING DIAGRAM 2.
- INSTALL EMS VENDOR FURNISHED RELAY.
- UNIT HEATER TEMPERATURE SENSOR (FTS-4) MOUNTED AT 54" AFF. INSTALL 22/8 CABLE FROM THIS LOCATION TO OPUS CONTROLLER. SEE WIRING DIAGRAM 3.
- PROVIDE 2"x4"x2" JUNCTION BOX WITH SINGLE GANG PLASTER RING BELOW THE GROOMING AREA ROOFTOP UNIT TEMPERATURE SENSOR JUNCTION BOX FOR HUMIDITY SENSOR. 22/2 CABLE FROM THIS LOCATION TO OPUS.
- PENETRATE OUTSIDE WALL OF BUILDING AND INSTALL A WEATHERTIGHT LB CONDUIT BODY ON THE EXTERIOR AND A 4"x4" JUNCTION BOX ON THE INTERIOR. PROVIDE A 1/2" RIGID CONDUIT TO 3' ABOVE ROOFLINE FOR THE OUTSIDE SENSOR DEVICE (OSD) PROVIDED BY THE EMS VENDOR. INSTALL A 22/8 CABLE FROM THIS J-BOX TO THE OPUS CONTROLLER. TERMINATE WIRES AT THE OSD ONLY AS SHOWN ON THE EMS VENDOR PRINTS. OSD TO FACE NORTH.
- NOVAR OPUS BASEPLATE AND MINIO INPUT-OUTPUT BOARDS PROVIDED BY EMS VENDOR TO POWER WALL MANUFACTURER. HILL PHOENIX TO FACTORY MOUNT AND WIRE THESE DEVICES. OPUS BASEPLATE WILL ARRIVE ON SITE PRE-WIRED TO THE LIGHTING RELAYS, 8-BUTTON OVERRIDE SWITCH, VERIS METER AND CONTROL TRANSFORMER.
- PROVIDE 1/2" CONDUIT FROM SECURITY ALARM SYSTEM MONITOR (SEC) IN THE PRE-SALES AREA TO THE OPUS IN OR ADJACENT TO THE IP&CA.
- PROVIDE ONE (1) 2"x4"x2" JUNCTION BOX WITH SINGLE GANG PLASTER RING FOR EACH OF THE FOLLOWING DEVICES BELOW ONE (1) ROOFTOP UNIT TEMPERATURE SENSOR JUNCTION BOX SERVING THE CENTRAL SALES AREA (TYPICALLY RTU#3); SALES AREA CO2 SENSOR, SALES AREA HUMIDITY SENSOR, SALES AREA ENTHALPY SENSOR. CONNECT THE JUNCTION BOXES WITH 1/2" CHASE NIPPLES. 22/8 CABLE FROM DEVICES IN THIS LOCATION TO OPUS. REFER TO 04/E3.1.

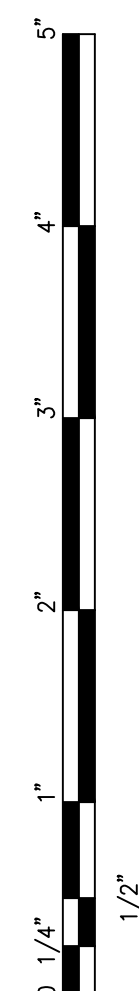
EMS PLAN 06

REF.: 1/8" = 1'-0"



KEY PLAN 01

REF.: NO SCALE



ACERTUS CONSULTING GROUP, LLC
 14817 West 95th Street ♦ Lenexa, Kansas 66215
 P 913 322 5150 ♦ F 913 322 5155
 www.AcertusGroup.com
 Registered Engineering Firm
 E-11902

petco.
 PETCO ANIMAL SUPPLIES STORES, INC. PETCO "GREENVILLE, TX"
 6834 WESLEY STREET GREENVILLE, TX 75402

DISTRIBUTION:	DATE:
25% SUBMISSION	06-28-11
75% SUBMISSION	08-11-11
98% SUBMISSION	08-16-11
100% SUBMISSION	09-23-11
PERMIT SET	09-28-11
FINAL PERMIT SET	09-20-13
BULLETIN #1	10-22-14

ENERGY MANAGEMENT SYSTEM PLAN
E2.5