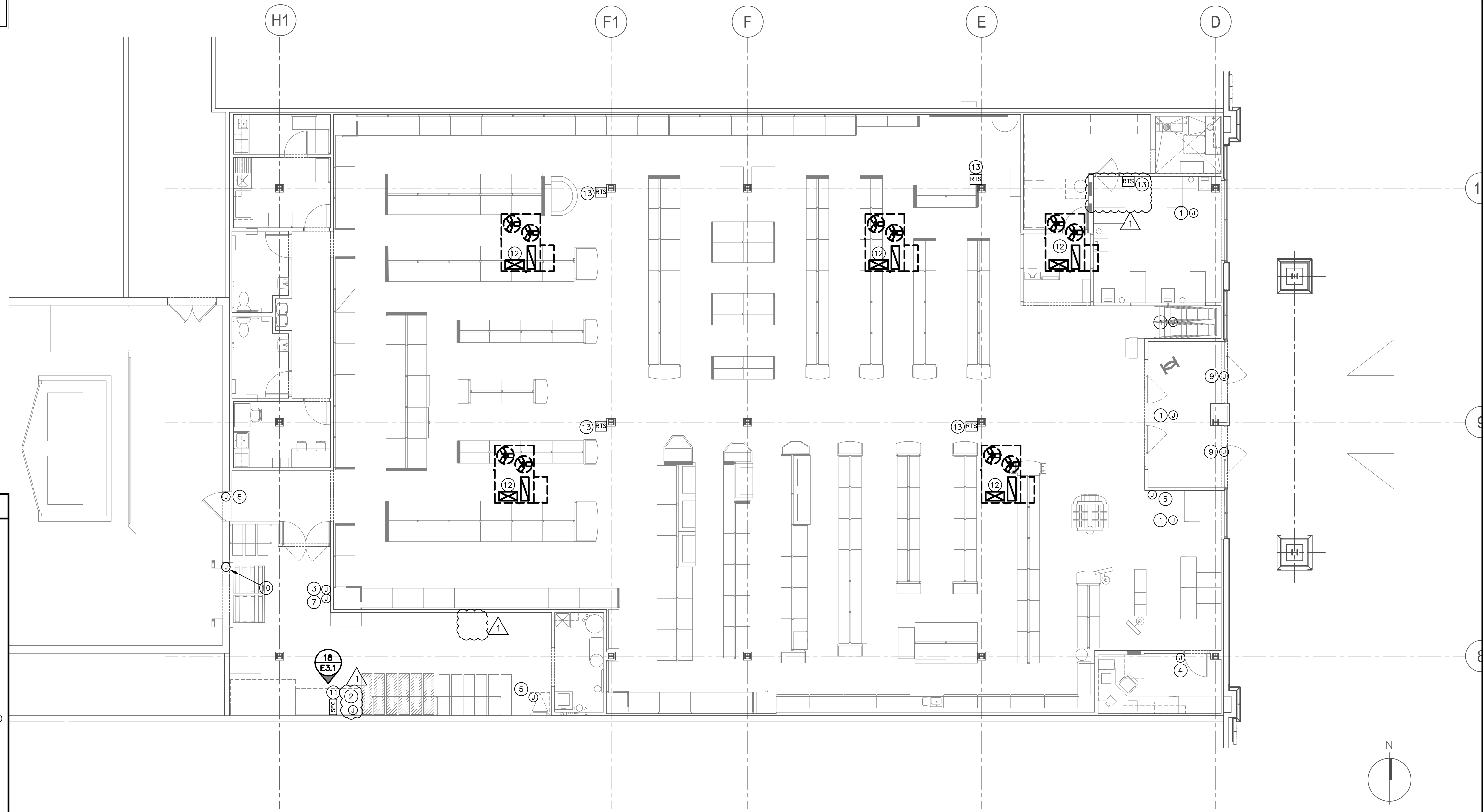


CONTRACTOR(S) SHALL VERIFY EXISTING CONDITIONS AND CORRELATE DIMENSIONS PRIOR TO PROVIDING THE WORK DETAILED IN THESE DRAWINGS. AND SHALL PROMPTLY NOTIFY THE ARCHITECT OF ANY DISCREPANCIES.
 © COPYRIGHT SBLM, ARCHITECTS PC. UNAUTHORIZED REPRODUCTION OR OTHER USE OF THIS DRAWING IS PROHIBITED.

NOTE:
 THIS DRAWING REPRESENTS ROUGH-IN REQUIREMENTS AND IS NOT INTENDED TO DEPICT A FIRE ALARM OR SECURITY SYSTEM. DRAWINGS FOR THESE SYSTEMS WILL BE PREPARED BY PETCO'S VENDOR AND SUBMITTED FOR REVIEW AND APPROVAL BY LOCAL AUTHORITIES AS REQUIRED.



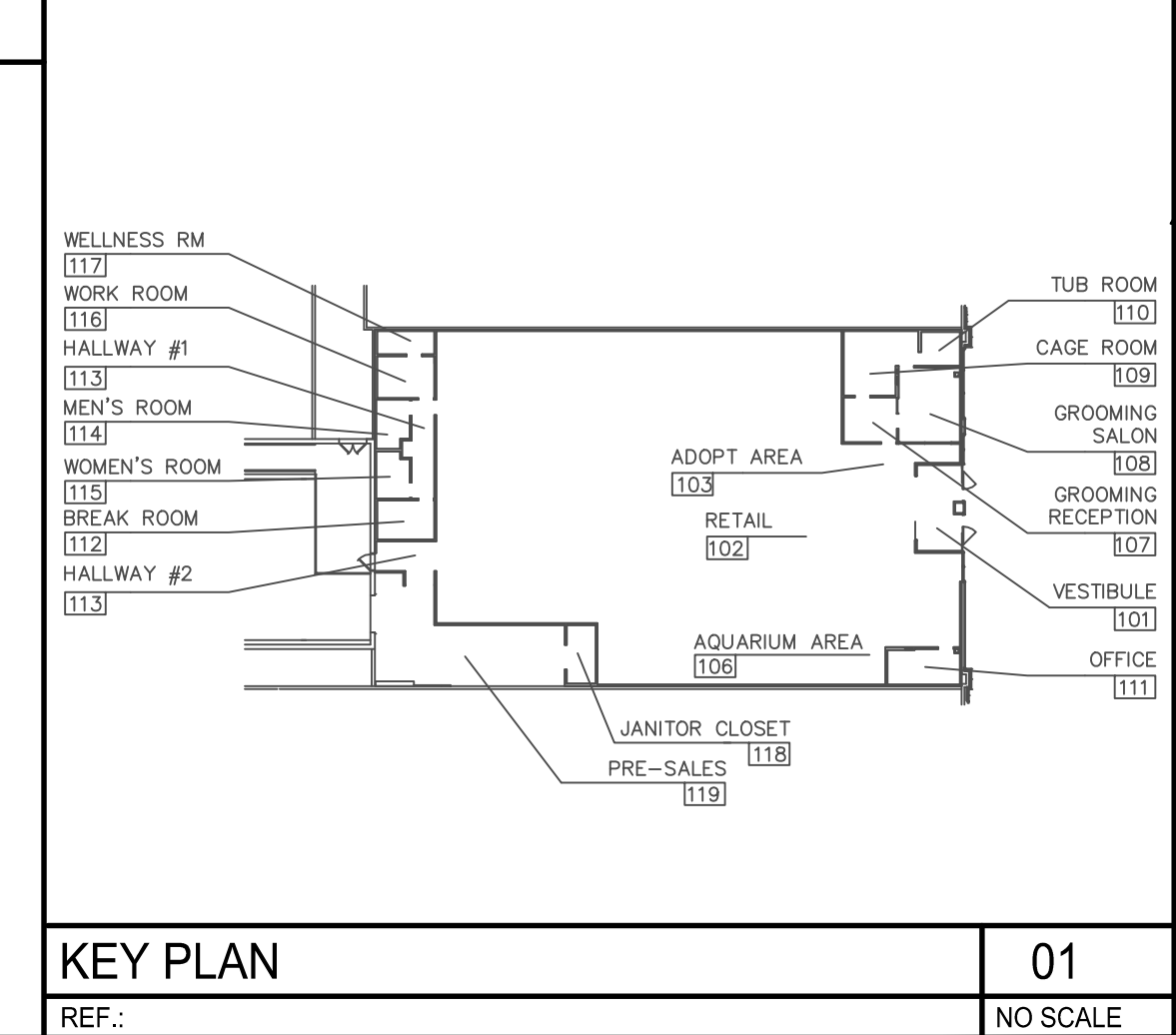
NOTES FOR THIS DRAWING

- THIS DRAWING DEPICTS RESPONSIBILITIES OF MULTIPLE PARTIES FOR THE SECURITY AND ALARM SYSTEMS. EXCEPT AS SPECIFICALLY NOTED BELOW, SYSTEM COMPONENTS, DEVICES, AND WIRING IS BY PETCO'S VENDOR. PROVISIONS TO FACILITATE INSTALLATION, SUCH AS JUNCTION BOXES, CONDUITS, AND PULL STRINGS ARE BY THE ELECTRICAL CONTRACTOR. FIRE DRAWINGS TO BE PROVIDED UNDER SEPARATE CONTRACT WITH PETCO VENDOR.
- ALL WIRING BELOW THE ELEVATION OF THE BOTTOM CORD OF BAR JOISTS SHALL BE IN CONDUIT. ALL CONDUITS WILL BE TERMINATED AT BAR JOIST LEVEL WITH GROMMET OR BOX CONNECTOR.
- ALL CONDUITS LOCATED IN DRYWALL SHALL BE TERMINATED 6" ABOVE CEILING TILE.
- ALL CONDUITS IN DRYWALL LOCATIONS TO BE RECESSED INSIDE WALL.
- NO EXPOSED CONDUIT IS ALLOWED IN THE SALES FLOOR. WHEREVER POSSIBLE, CONDUITS SHALL BE CONCEALED BY DRYWALL IN THE STUD PARTITIONS.
- SMOKE DETECTORS AND TEST/RESET STATION FURNISHED AS INDICATED ELSEWHERE ON THE DRAWINGS.
- JUNCTION BOXES FOR SECURITY SYSTEM DEVICES ARE TO BE SINGLE GANG, EXCEPT FOR KEY PAD LOCATIONS. JUNCTION BOXES FOR FIRE ALARM DEVICES ARE NOTED AS 4X4X3 (QUAD BOX 3" DEEP).
- ALL JUNCTION BOXES INSTALLED EXPOSED ON SALES FLOOR AND WALL MOUNTED BELOW 7'-0" AFF SHALL BE DIE-CAST ALUMINUM WEATHERPROOF JUNCTION BOXES WITH 3/4" INLETS ON TOP/BOTTOM/BACK ONLY; BELL 5386 SERIES OR EQUAL.
- E.C. TO VERIFY LOCAL REQUIREMENTS FOR LOW VOLTAGE SYSTEMS WIRING AND PROVIDE CONDUIT(S) WHERE REQUIRED.

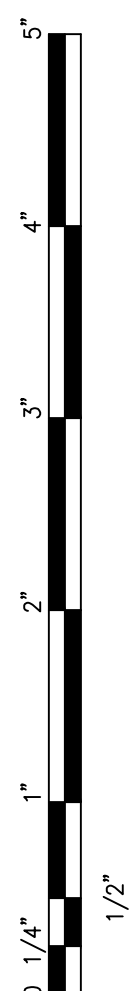
KEYNOTES (SYMBOLS ①, ② ETC.)

- FOR CEILING MOUNTED GLASS BREAK, PROVIDE SINGLE GANG JUNCTION BOX AT DROP CEILING WITH MUD RING AND T-BAR, AND STUB 3/4" CONDUIT TO BAR JOIST. FOR OPEN CEILING INSTALLATIONS IN RETAIL AREA, PROVIDE 4X4X2 JUNCTION BOX MOUNTED TO THE BOTTOM OF THE BAR JOIST.
- FOR WALL MOUNT MOTION SENSOR, INSTALL SINGLE GANG JUNCTION BOX AT 9'-6" AFF, AND STUB 3/4" CONDUIT TO THE BAR JOIST LEVEL.
- PROVIDE SINGLE GANG JUNCTION BOX WITH MUD RING AT 4" ABOVE DOOR FRAME (LOCK SIDE) FOR SIREN AND STUB 3/4" CONDUIT TO THE BAR JOIST LEVEL.
- PROVIDE SINGLE GANG JUNCTION BOX WITH MUD RING AT 12" ABOVE DOOR FRAME (LOCK SIDE) FOR SIREN, DOOR CONTACT AND MOTION SENSOR AND STUB 3/4" CONDUIT TO THE BAR JOIST LEVEL.
- 4X4X2 JUNCTION BOX ADJACENT TO ROOF HATCH. VERIFY LOCATION IN FIELD.
- FOR FRONT KEYPAD, PROVIDE RECESSED 4X4X2 JUNCTION BOX AT 54" AFF, AND STUB 3/4" CONDUIT INSIDE WALL TO BAR JOIST LEVEL. ENSURE THAT LEFT AND RIGHT OF BOX ARE CLEAR OF OBSTRUCTIONS BY 3". FACE JUNCTION BOX TOWARD POINT OF SALE LOCATION.
- FOR RECEIVING KEYPAD PROVIDE 4X4X2 JUNCTION BOX AT 54" AFF AND 3/4" CONDUIT TO BAR JOIST LEVEL.
- FOR SINGLE EXIT SECURITY, PROVIDE SINGLE GANG JUNCTION BOX WITH MUD RING AT 4" ABOVE DOOR FRAME (LOCK SIDE) AND STUB 3/4" CONDUIT TO THE BAR JOIST LEVEL.
- FOR DOUBLE GLASS DOOR SECURITY, RUN 3/4" CONDUIT 6" INTO FRAME FOR ALARM CONTACTS, AND STUB 3/4" CONDUIT TO THE BAR JOIST LEVEL.
- FOR OVERHEAD DOOR, PROVIDE SINGLE GANG JUNCTION BOX WITH COVER FOR DOOR CONTACT CONNECTIONS, AND STUB 3/4" CONDUIT TO THE BAR JOIST LEVEL. PLACE THE JUNCTION BOX 4" AFF AND WITHIN 4"-6" TO THE SIDE OF THE DOOR. ENSURE THAT BOX DOES NOT INTERFERE WITH THE LOCATION OF THE OVERHEAD DOOR TRACKS/MOUNTING HARDWARE.
- FOR BURGLAR PANEL, PROVIDE SEPARATE 120VAC POWER SUPPLY TO (2) 4"x4" DEEP JUNCTION BOXES AND STUB 1" CONDUIT FROM THE BURGLAR AND INTERFACE PANELS AT 5' AFF TO THE CEILING DECK.
- PROVIDE 1" FLEXIBLE CONDUIT FROM DUCT DETECTOR POWER MODULE IN RTU TO ONE 4X4X2 JUNCTION BOX AT BAR JOIST LEVEL.
- PROVIDE ONE 2X4X2 JUNCTION BOX FOR REMOTE TEST/RESET STATION FOR SMOKE DETECTORS 12" ABOVE TEMPERATURE SENSOR FOR RESPECTIVE HVAC UNIT. REFER TO SHEET E2.5 FOR SENSOR LOCATIONS. ELECTRICAL CONTRACTOR TO PROVIDE THE 5-WIRE INTERCONNECTION BETWEEN THE TEST/RESET STATION AND THE SMOKE DETECTOR PER MANUFACTURER'S INSTALLATION INSTRUCTIONS.

SECURITY SYSTEM PLAN 06
 REF.: 1/8" = 1'-0"



KEY PLAN 01
 REF.: NO SCALE



ACERTUS CONSULTING GROUP, LLC
 14817 West 95th Street ♦ Lenexa, Kansas 66215
 P 913 322 5150 ♦ F 913 322 5155
 www.AcertusGroup.com
 Registered Engineering Firm
 E-11902

petco. PETCO "GREENVILLE, TX"
 SUPPLIES STORES, INC. 6834 WESLEY STREET
 SAN ANTONIO, TEXAS 78248 GREENVILLE, TX 75402

DISTRIBUTION:	DATE:
25% SUBMISSION	06-28-11
75% SUBMISSION	08-11-11
98% SUBMISSION	08-16-11
100% SUBMISSION	09-23-11
PERMIT SET	09-28-11
FINAL PERMIT SET	09-20-13
BULLETIN #1	10-22-14

DRAWING TITLE:
SECURITY SYSTEM PLAN
E2.4