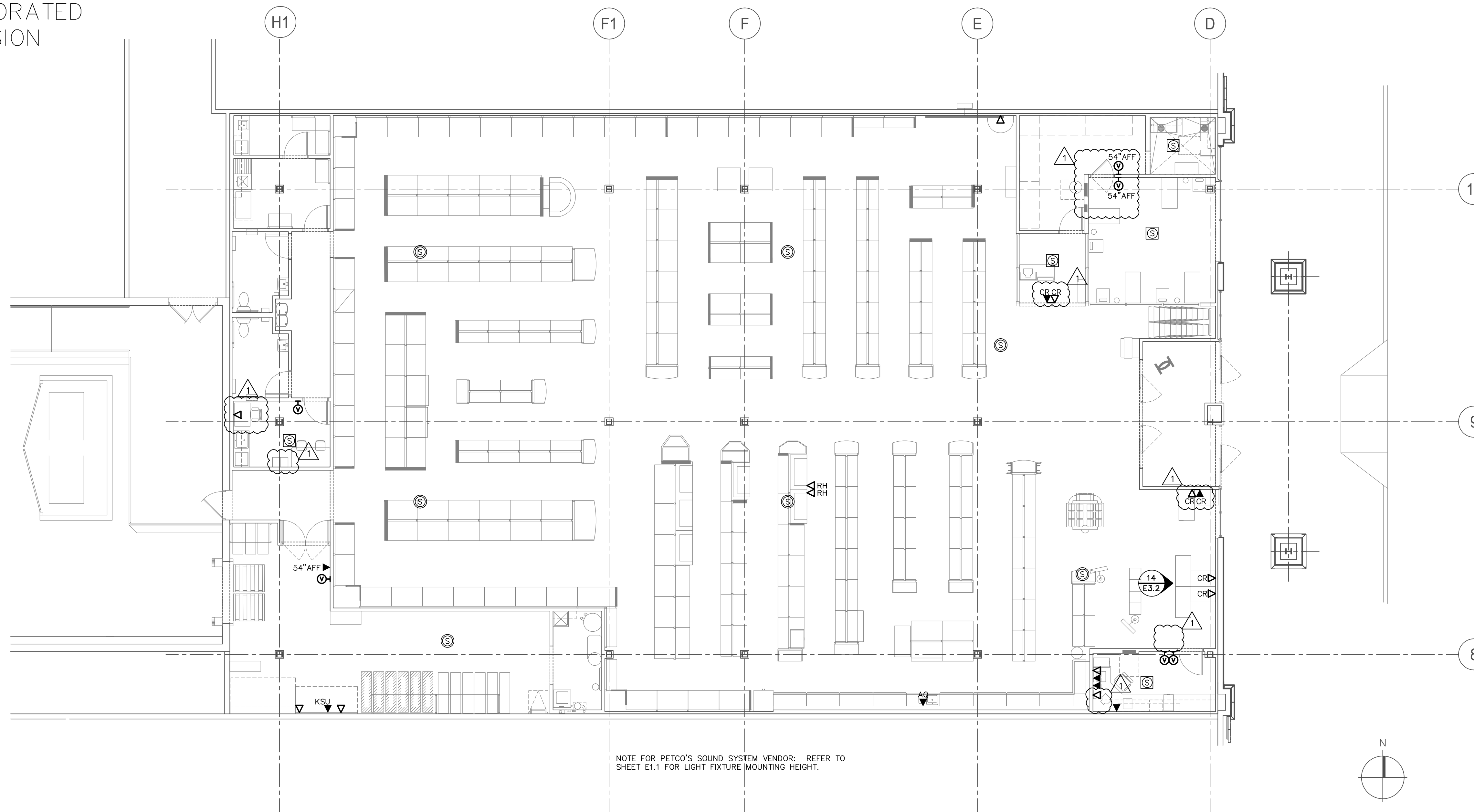
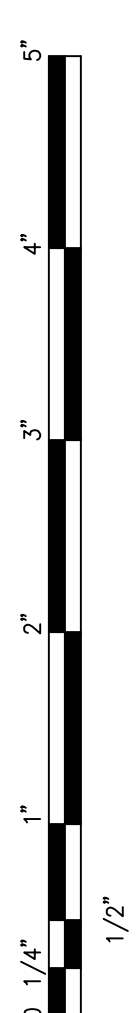
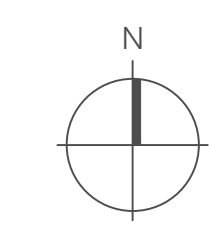


CONTRACTOR(S) SHALL VERIFY EXISTING CONDITIONS AND CORRELATE DIMENSIONS PRIOR TO PROVIDING THE WORK DETAILED IN THESE DRAWINGS. AND SHALL PROMPTLY NOTIFY THE ARCHITECT OF ANY DISCREPANCIES. COPYRIGHT SBLM, ARCHITECTS PC. UNAUTHORIZED REPRODUCTION OR OTHER USE OF THIS DRAWING IS PROHIBITED.

INFORMATION FROM
PETCO'S IS DEPT HAS
NOT BEEN INCORPORATED
INTO THIS SUBMISSION



NOTE FOR PETCO'S SOUND SYSTEM VENDOR: REFER TO SHEET E1.1 FOR LIGHT FIXTURE MOUNTING HEIGHT.



NOTES FOR THIS DRAWING

- THIS DRAWING DEPICTS RESPONSIBILITIES OF MULTIPLE PARTIES FOR THE SOUND AND COMMUNICATION SYSTEMS. GENERALLY, SYSTEM OUTLETS, DEVICES, EQUIPMENT, AND WIRING IS BY PETCO'S VENDOR. PROVISIONS TO FACILITATE INSTALLATION, SUCH AS JUNCTION BOXES, CONDUIT AND PULL STRINGS, ARE BY THE ELECTRICAL CONTRACTOR (E.C.).
- ALL WALL MOUNTED JUNCTION BOXES AND PULL BOXES SHALL HAVE CONDUIT AND PULL STRING BY E.C. UP AND OUT WALL AT BOTTOM OF NEAREST BAR JOIST (UNLESS OTHERWISE NOTED).
- CONDUITS IN PRE-SALES AREA MAY BE RUN EXPOSED.
- ALL EXPOSED WIRING (FROM JUNCTION BOX TO DEVICE) SHALL BE IN FLEXIBLE ARMOR WHERE SUBJECT TO DAMAGE.
- ALL EMPTY JUNCTION BOXES SHALL HAVE A COVER PLATE.
- SOUND SYSTEM EQUIPMENT AND WIRING FURNISHED AND INSTALLED BY PETCO'S VENDOR.
- ALL DIMENSIONS, IF SHOWN, ARE FROM THE INSIDE FACE OF MASONRY WALL. REFER TO 02/E3.2 FOR EXACT LOCATIONS OF P.O.S. AREA TELEPHONE AND DATA OUTLETS. REFER TO 02/E3.2 AND 04/E3.2 FOR EXACT LOCATIONS OF OFFICE AREA TELEPHONE AND DATA OUTLETS.
- EQUIPMENT IN WET AREAS SHALL BE SUITABLE FOR WET LOCATIONS.

- VERIFY EXACT LOCATIONS AND MOUNTING HEIGHTS OF ALL DEVICES WITH PETCO FM PRIOR TO INSTALLATION. SEE 05/E1.1 FOR DEVICE MOUNTING HEIGHTS.
- ALL JUNCTION BOXES INSTALLED EXPOSED ON SALES FLOOR AND WALL MOUNTED BELOW 7'-0" AFF SHALL BE DIE-CAST ALUMINUM WEATHERPROOF JUNCTION BOXES WITH 3/4" INLETS ON TOP/BOTTOM/BACK ONLY; BELL 5386 SERIES OR EQUAL.
- E.C. TO VERIFY LOCAL REQUIREMENTS FOR LOW VOLTAGE SYSTEMS WIRING AND PROVIDE CONDUIT(S) WHERE REQUIRED.
- CONDUIT SYSTEM FOR DATA SYSTEM SHALL BE 3/4" CONDUIT FOR UP TO SIX CAT5 CABLES AND
- PROVIDE CONDUIT BUSHINGS FOR ALL CONDUIT NIPPLES, SLEEVES AND RUNS FROM WALL BOXES TO ABOVE CEILING.

SOUND SYSTEM LEGEND (W x H x D)

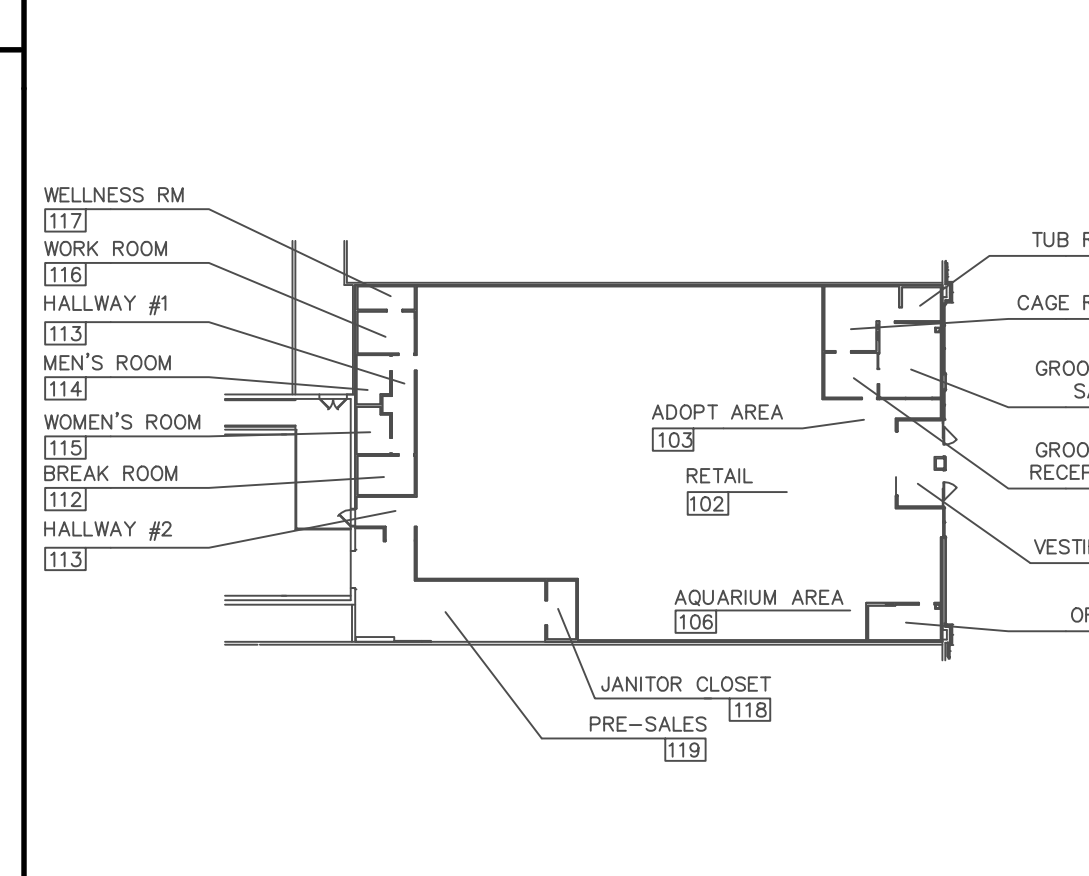
- SOUND SYSTEM SPEAKER MOUNTED FROM BOTTOM OF BAR JOIST.
- SOUND SYSTEM SPEAKER FLUSH MOUNTED IN CEILING TILE. COORDINATE LOCATION WITH LIGHT FIXTURES AND DIFFUSERS/GRILLES.
- 2.125"x4"x2.5" JUNCTION BOX FOR SOUND SYSTEM VOLUME CONTROL. MOUNT AT 42" AFF (EXCEPT WHERE SPECIFIED OTHERWISE) WITH 1/2" CONDUIT UP TO JOIST SPACE. VERIFY LOCATION IN FIELD.

COMMUNICATION SYSTEM LEGEND (W x H x D)

- TELEPHONE OUTLET IN 2"x4"x2" JUNCTION BOX WITH 3/4" CONDUIT (OR POWER POLE FOR ISLAND FIXTURES, SEE E2.2) TO ABOVE CEILING OR TO BOTTOM CORD OF BAR JOIST IN OPEN AREAS.
- KSU LOCATED NEXT TO TELEPHONE COMPANY M.P.O.E. AT MAIN TELEPHONE TERMINAL BOARD ("MTB"). SEE DRAWING E2.2 FOR LOCATION.
- TELEPHONE OUTLET MOUNTED IN CASHIER COUNTER, WITH WIRING FED THROUGH CONDUIT IN WALL (OR DATA CHANNEL IN POWER POLE FOR ISLAND FIXTURES). REFER TO 04/E3.2.
- TELEPHONE OUTLET. SEE SHEET E3.1, LARGE SCALE AQUARIUM PLAN FOR HEIGHT.
- DATA OUTLET IN 2"x4"x2" JUNCTION BOX WITH 3/4" CONDUIT TO ABOVE CEILING OR TO BOTTOM CORD OF BAR JOIST IN OPEN AREAS.
- DATA OUTLET MOUNTED IN CASHIER COUNTER, WITH WIRING FED THROUGH CONDUIT IN WALL (OR DATA CHANNEL IN POWER POLE FOR ISLAND FIXTURES). REFER TO 04/E3.2.
- DATA OUTLET IN 2"x4"x2" JUNCTION BOX WITH 3/4" RIGID CONDUIT TO ABOVE CEILING OR TO BOTTOM CORD OF BAR JOIST, ADJACENT TO POWER CONDUIT IN THIS LOCATION.

SOUND AND COMM SYSTEM PLAN

REF.: 1/8" = 1'-0"



KEY PLAN

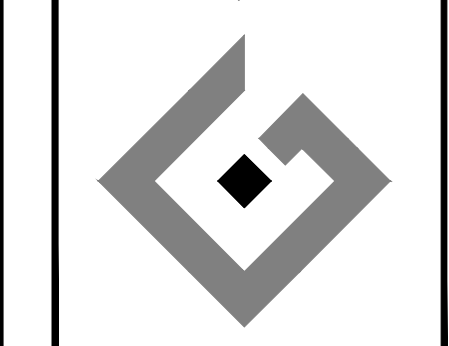
REF.: NO SCALE

DISTRIBUTION:	DATE:
25% SUBMISSION	06-28-11
75% SUBMISSION	08-11-11
98% SUBMISSION	08-16-11
100% SUBMISSION	09-23-11
PERMIT SET	09-28-11
FINAL PERMIT SET	09-20-13
BULLETIN #1	10-22-14

SRIM JOB #	PETCO PM JOB #
1120188	11458
DESIGNER	CHECKED
AJP/BJE/JMM	BJT

DRAWING TITLE:
SOUND AND COMMUNICATION SYSTEM
E2.3

ACERTUS CONSULTING GROUP, LLC
14817 West 95th Street
P 913 322 5150 F 913 322 5155
www.AcertusGroup.com
Registered Engineering Firm
E-11902



petco.
PETCO ANIMAL SUPPLIES STORES, INC. 6834 WESLEY STREET GREENVILLE, TX 75402
PETCO "GREENVILLE, TX"