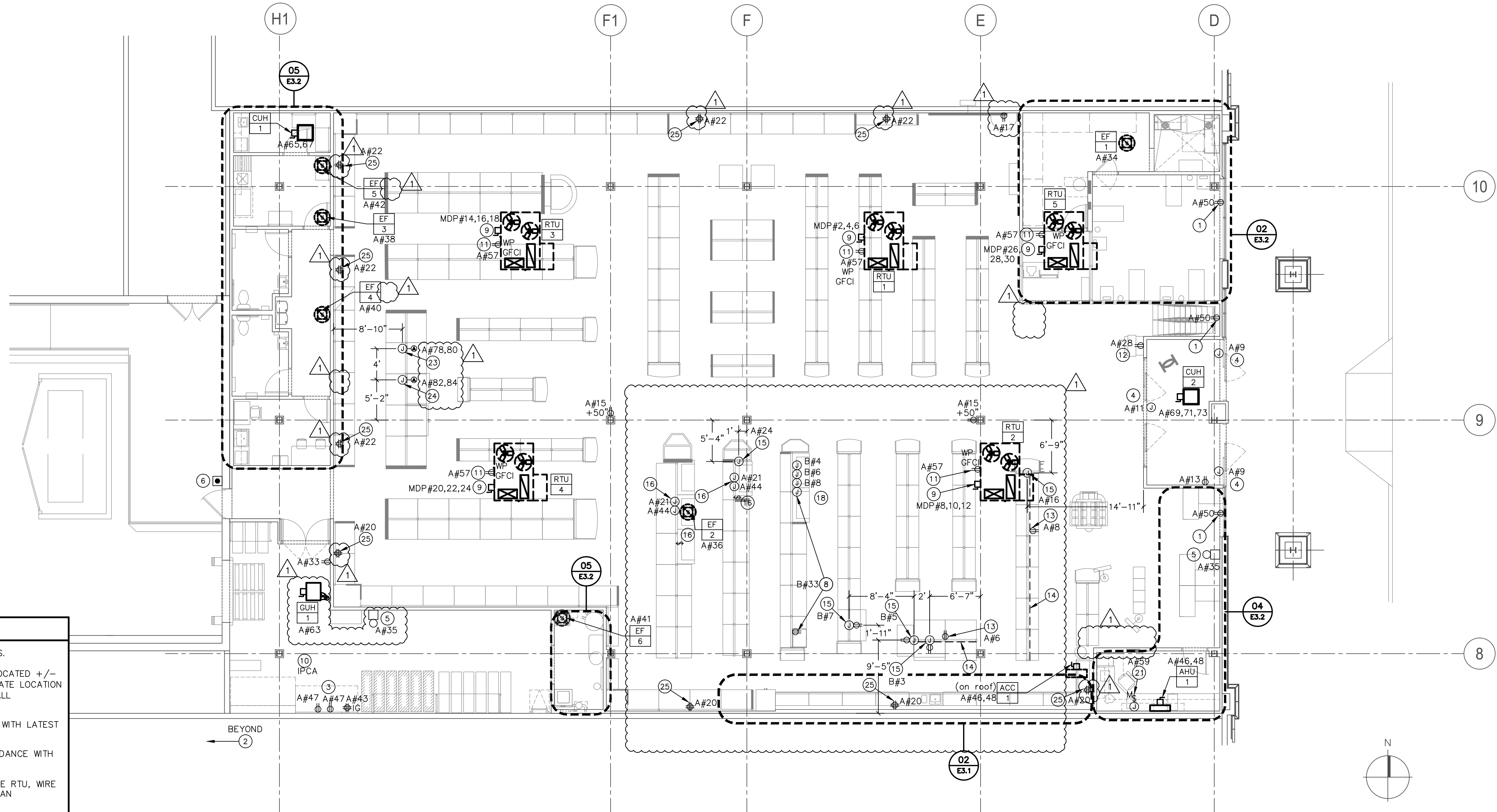


CONTRACTOR(S) SHALL VERIFY EXISTING CONDITIONS AND CORRELATE DIMENSIONS PRIOR TO PROVIDING THE WORK DETAILED IN THESE DRAWINGS. AND SHALL PROMPTLY NOTIFY THE ARCHITECT OF ANY DISCREPANCIES. COPYRIGHT SBLM, ARCHITECTS P.C. UNAUTHORIZED REPRODUCTION OR OTHER USE OF THIS DRAWING IS PROHIBITED.



**NOTES FOR THIS DRAWING**

- SEE LARGE SCALE PLANS FOR DETAILS OF THOSE AREAS.
- ALL DEVICES NOT SPECIFICALLY DIMENSIONED MAY BE LOCATED +/- 8" IN EITHER DIRECTION IN PLAN FROM THEIR APPROPRIATE LOCATION SHOWN (TO NEAREST STUD OR NEAREST CMU CORE). ALL DIMENSIONS FROM INSIDE FACE OF UNFINISHED WALL.
- VERIFY LOCATION OF ALL DEVICES, POWER POLES, ETC., WITH LATEST FIXTURE PLAN.
- INSTALLATION OF ELECTRIC PANELS SHALL BE IN ACCORDANCE WITH NEC SECTION 408, "SWITCHBOARDS AND PANELBOARDS".
- FOR ANY DUCT SMOKE DETECTORS NOT POWERED BY THE RTU, WIRE SMOKE DETECTOR TO A#39 AND MAKE PROVISION FOR FAN SHUTDOWN AND FIRE ALARM SIGNAL CIRCUIT.
- ALL JUNCTION BOXES INSTALLED EXPOSED ON SALES FLOOR AND WALL MOUNTED BELOW 7'-0" AFF SHALL BE DIE-CAST ALUMINUM WEATHERPROOF JUNCTION BOXES WITH 3/4" INLETS ON TOP/BOTTOM/BACK ONLY; BELL 5386 SERIES OR EQUAL.
- SOME RECEPTACLES ON CONTROLLED CIRCUITS ARE TO BE GRAY IN COLOR TO DIFFERENTIATE THEM FROM UNCONTROLLED CIRCUITS.

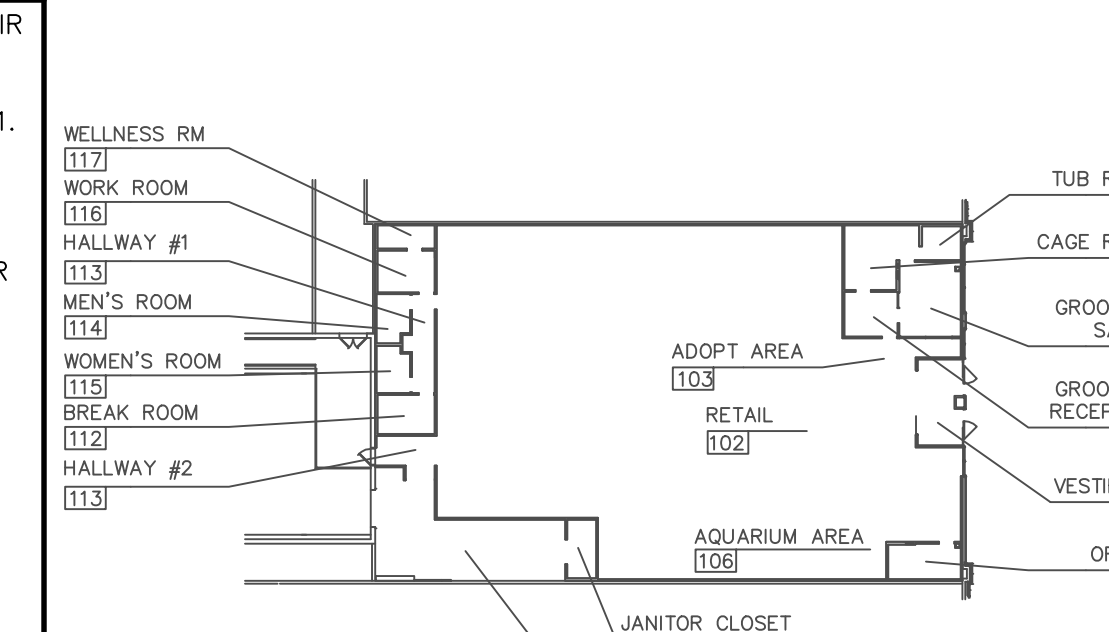
**KEYNOTES (SYMBOLS ①, ② ETC.)**

- RECEPTACLES ABOVE SHOW WINDOWS. 12" ABOVE TOP OF STOREFRONT.
- UTILITY COMPANY CT AND METER ASSEMBLY. COORDINATE WITH UTILITY FOR ALL REQUIREMENTS.
- MAIN TELEPHONE BACKBOARD. REFER TO 18/E3.1.
- AUTOMATIC DOOR, CIRCUIT INDIVIDUALLY AS INDICATED. VERIFY EXACT LOCATION AND CONNECTION.
- BUZZER, EDWARDS #725. MOUNTED IN JOIST SPACE.
- PUSH BUTTON FOR TWO DOOR BUZZERS MOUNTED AT 54" AFF. PROVIDE ALL WIRING AND CONNECT TO BUZZERS PER MANUFACTURER'S INSTALLATION INSTRUCTIONS.
- NOT USED.
- JUNCTION BOX MOUNTED AT BOTTOM CORD OF BAR JOIST FOR FREEZER AND/OR REFRIGERATOR. PROVIDE DUPLEX RECEPTACLE NEAR BASE OF FIXTURE ON SIDE SHOWN. CONTRACTOR TO DROP CONDUCTORS IN 3/4" RIGID CONDUIT DOWN SPINE OF RACKING TO BASE. VERIFY LOCATION WITH PETCO PROJECT MANAGER PRIOR TO INSTALLATION. SEE DETAIL 14/E3.1. LABEL WITH CIRCUIT NUMBER(S). CONDUIT PAINTED PER ARCHITECTURAL PLANS.
- DISCONNECT FOR ROOFTOP UNIT.
- INTEGRATED POWER & CONTROL ASSEMBLY. REFER TO SHEETS E1.2, E1.3, AND EMS1.1.
- CIRCUIT WP/GFCI DUPLEX RECEPTACLE FURNISHED (AND INTEGRAL) WITH HVAC UNITS.
- DUPLEX FOR QUICK TAG. RECEPTACLE TO BE GRAY.
- DUPLEX RECEPTACLE NEAR BASE ON ONE SIDE OF GONDOLA. SEE 14/E3.1 FOR LOCATION.
- PROVIDE HORIZONTAL SECTIONS OF PLUGMOLD ALONG ONE SIDE OF THE ENTIRE FIXTURE, 6" ABOVE THE TOP OF SHELF OF THE GONDOLA WITH OUTLETS SPACED A MAXIMUM OF 18" FOR STRAIGHT GONDOLA RUNS. USE 3', 5', 6' SECTIONS OF LEGRAND 206B\* IN GRAY SCUFFCOAT AS REQUIRED TO MATCH THE GONDOLA LENGTH. SEE DETAIL 14/E3.1. WHERE THE PLUGMOLD LENGTH (OR COMBINATION OF PLUGMOLD LENGTHS) DOES NOT MATCH THE GONDOLA LENGTH, PROVIDE THE NEXT SHORTEST STANDARD SECTION OF PLUGMOLD FOR THE FIXTURE (I.E. FOR A 4' FIXTURE, USE A 3' PLUGMOLD, ETC.) CIRCUIT AS SHOWN.
- JUNCTION BOX MOUNTED AT BOTTOM CORD OF BAR JOIST FOR DISPLAY/EQUIPMENT BELOW. CONTRACTOR TO DROP CONDUCTORS IN 3/4" RIGID CONDUIT DOWN SPINE OF RACKING TO BASE. VERIFY LOCATION WITH PETCO PROJECT MANAGER PRIOR TO INSTALLATION. SEE DETAIL 14/E3.1. LABEL WITH CIRCUIT NUMBER(S). CONDUIT PAINTED PER ARCHITECTURAL PLANS. WHERE SHOWN PROVIDE DUPLEX RECEPTACLE NEAR BASE OF FIXTURE.
- JUNCTION BOXES MOUNTED AT BOTTOM CORD OF BAR JOIST FOR INLINE HABITAT. CONTRACTOR TO FOLLOW TERMINAL EXHAUST DUCT DROP TO HABITAT WITH RIGID CONDUIT. PROVIDE ONE CONTROLLED CIRCUIT (A#44) WIRED TO SAM LIGHTING AND ONE UNCONTROLLED CIRCUIT (A#21) TO SAM LOCKING MECHANISM. DAISY CHAIN CONDUCTORS BETWEEN UNITS AS REQUIRED. LIGHTING TO BE CIRCUITED THROUGH SINGLE-POLE SWITCH MOUNTED ON TOP OF SAM FOR MANUAL OVERRIDE OFF.
- NOT USED.
- JUNCTION BOX(ES) MOUNTED AT BOTTOM CORD OF BAR JOIST FOR LIVE ANIMAL DISPLAY. DROP POWER IN RIGID CONDUIT TO DISPLAY AFTER DISPLAY HAS BEEN SET AT TIME OF STORE FIXTURING WHILE VENDOR IS ON SITE. PROVIDE MC CABLE INSIDE DISPLAY AND MAKE FINAL CONNECTIONS TO HABITAT(S) AS REQUIRED.
- NOT USED.
- NOT USED.
- PROVIDE 120 VOLT CIRCUIT FOR AHU-1 CONDENSATE PUMP ABOVE CEILING. CONNECT WIRING HARNESS TO ACTIVATE PUMP WHEN CONDENSATE ACTIVATES FLOAT SWITCH.
- NOT USED.
- JUNCTION BOX MOUNTED AT BOTTOM CORD OF BAR JOIST FOR OPEN AIR COOLER BELOW. CONTRACTOR TO DROP CONDUCTORS IN 3/4" RIGID CONDUIT DOWN SPINE OF RACKING TO BASE. VERIFY LOCATION WITH PETCO PROJECT MANAGER PRIOR TO INSTALLATION. SEE DETAIL 14/E3.1. LABEL WITH CIRCUIT NUMBERS. CONDUIT PAINTED PER ARCHITECTURAL PLANS. PROVIDE TWISTLOCK 20A, 208V RECEPTACLE TO MATCH CORD AND PLUG SUPPLIED WITH OPEN AIR COOLER.
- JUNCTION BOX MOUNTED AT BOTTOM CORD OF BAR JOIST FOR FREEZER BELOW. CONTRACTOR TO DROP CONDUCTORS IN 3/4" CONDUIT DOWN SPINE OF RACKING TO BASE. VERIFY LOCATION WITH PETCO PROJECT MANAGER PRIOR TO INSTALLATION. SEE DETAIL 14/E3.1. LABEL WITH CIRCUIT NUMBERS. CONDUIT PAINTED PER ARCHITECTURAL PLANS. PROVIDE 20A, 120/208V RECEPTACLE TO MATCH CORD AND PLUG SUPPLIED WITH FREEZER.
- QUAD RECEPTACLE MOUNTED AT 9'-0" AFF FOR PERIMETER FIXTURE LIGHTING.

**ELECTRICAL POWER PLAN**

REF.: 1/8" = 1'-0"

06

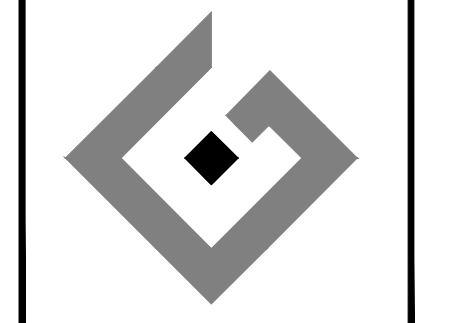


**KEY PLAN**

REF.: NO SCALE

01

**ACERTUS CONSULTING GROUP, LLC**  
 14817 West 95th Street  
 Lenexa, Kansas 66215  
 P 913 322 5150 F 913 322 5155  
 www.AcertusGroup.com  
 Registered Engineering Firm  
 E-11902



**petco.**  
 PETCO ANIMAL SUPPLIES STORES, INC. 6834 WESLEY STREET GREENVILLE, TX 75402  
 PETCO "GREENVILLE, TX"

DISTRIBUTION:	DATE:
25% SUBMISSION	06-28-11
75% SUBMISSION	08-11-11
98% SUBMISSION	08-16-11
100% SUBMISSION	09-23-11
PERMIT SET	09-28-11
FINAL PERMIT SET	09-20-13
BULLETIN #1	10-22-14

DRAWING TITLE:	
ELECTRICAL POWER PLAN	
<b>E2.2</b>	