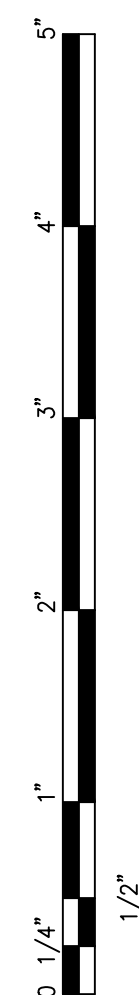
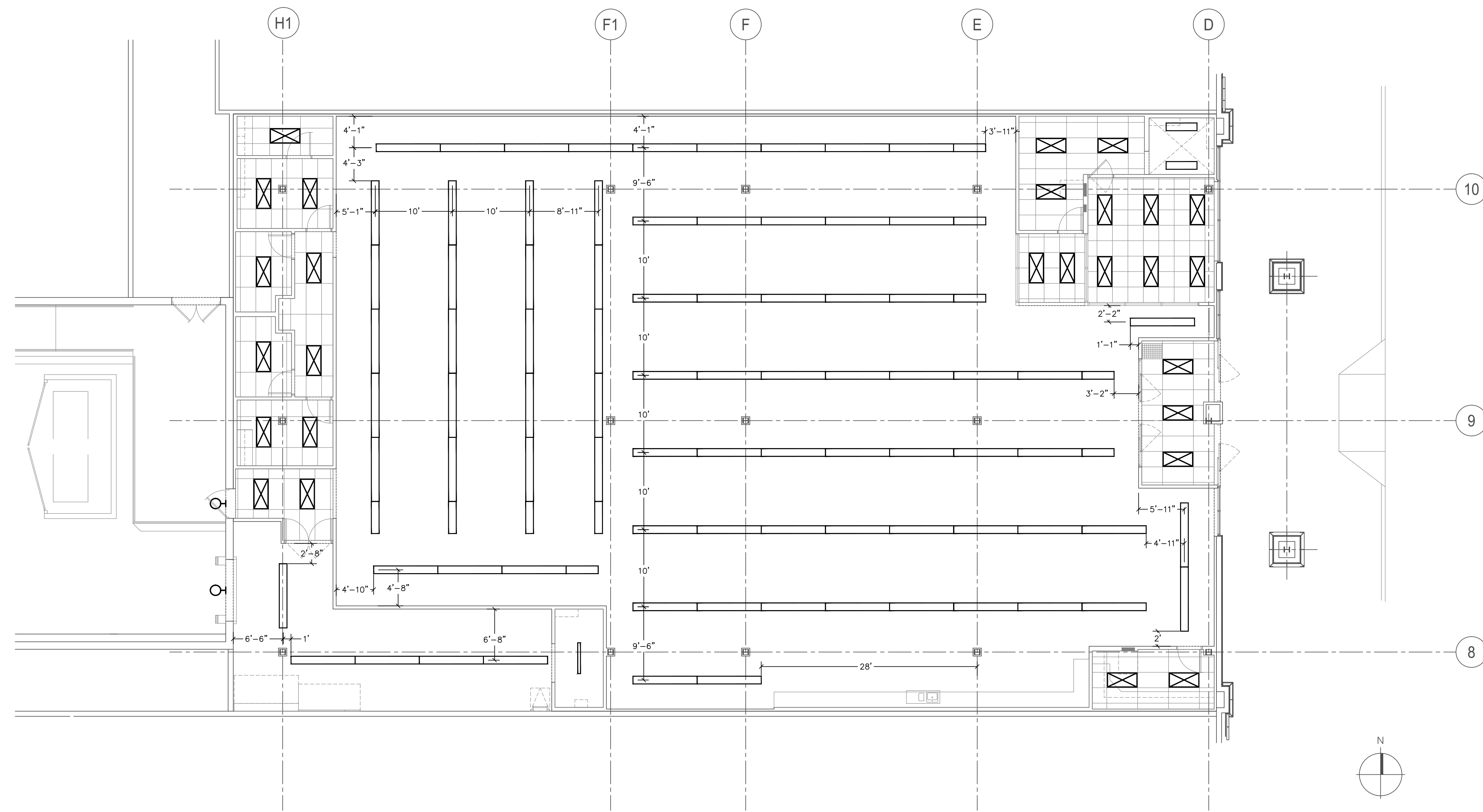
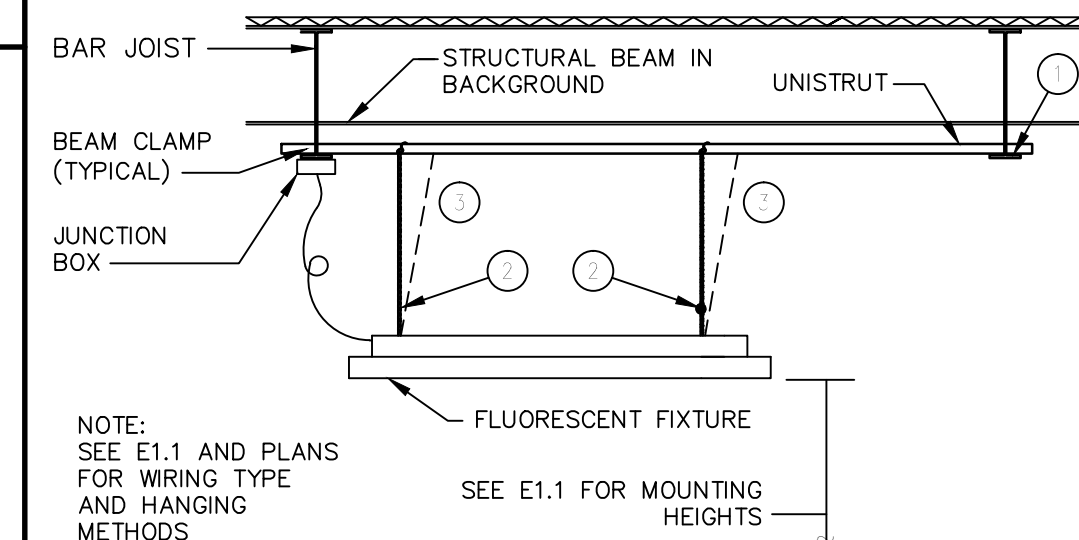


CONTRACTOR(S) SHALL VERIFY EXISTING CONDITIONS AND CORRELATE DIMENSIONS PRIOR TO PROVIDING THE WORK DETAILED IN THESE DRAWINGS.
 AND SHALL PROMPTLY NOTIFY THE ARCHITECT OF ANY DISCREPANCIES.
 COPYRIGHT SBLM ARCHITECTS PC. UNAUTHORIZED REPRODUCTION OR OTHER USE OF THIS DRAWING IS PROHIBITED.



NOTES FOR THIS DRAWING

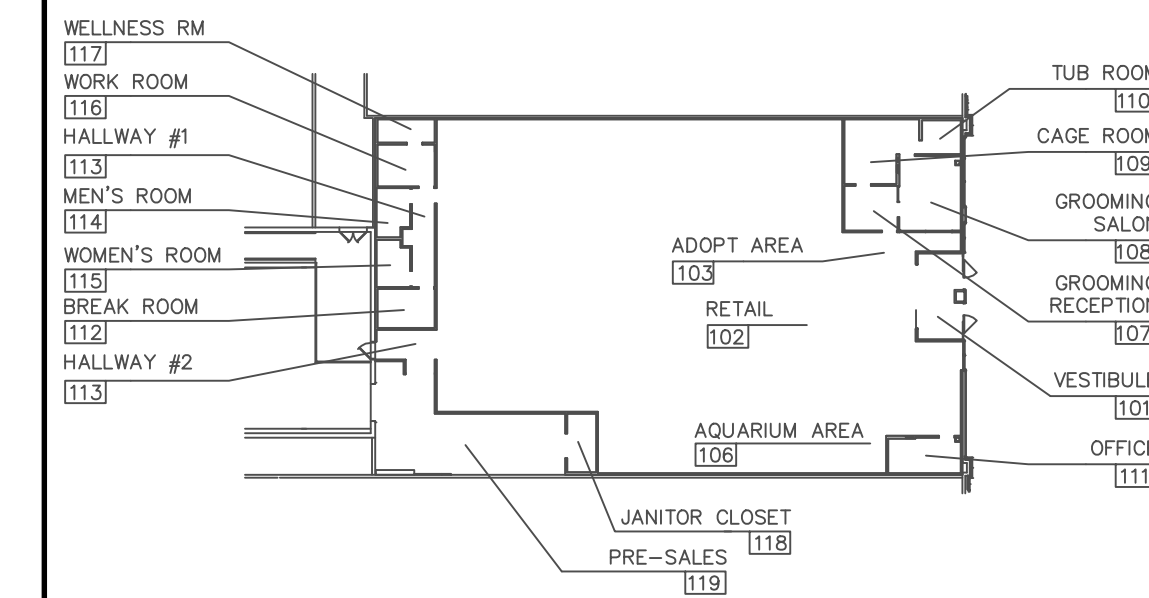
1. ALL DIMENSIONS ARE FROM FACE OF UNFINISHED WALL.
2. REFER TO ELEVATIONS FOR EXTERIOR LIGHTING PLACEMENT.
3. FIXTURES NOT IN CEILING GRID AND NOT DIMENSIONED SHALL BE FIELD VERIFIED WITH PETCO PM PRIOR TO INSTALLATION.
4. SEE SHEET E1.1 FOR LIGHTING FIXTURE MOUNTING HEIGHT SCHEDULE.



- NOTE:**
 SEE E1.1 AND PLANS
 FOR WIRING TYPE
 AND HANGING
 METHODS
- KEY NOTES (SYMBOL, ○, ○, ETC.)**
1. FASTEN UNISTRUT #1000T CHANNEL TO BOTTOM RAIL OF BAR JOIST WITH 3/8"-16 X 1-1/4" SCREWS, HEX NUTS, WASHERS, AND LOCK WASHERS, OR USE 1/2" RIGID CONDUIT FASTENED WITH C-CLAMPS FOR FLUORESCENT FIXTURES IN BACK ROOM AREAS.
 2. #12 STEEL CHAIN OR #2 GRIPPLE FASTENER.
 3. PROVIDE SEISMIC RESTRAINTS TO UNISTRUT BEYOND, WHERE REQUIRED.

ELECTRICAL LIGHTING PLAN

REF.: 1/8" = 1'-0"



LIGHTING FIXTURE MOUNTING DETAIL

REF.: E2.1

KEY PLAN

REF.:

06

NO SCALE

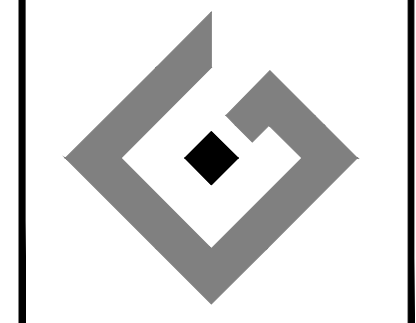
01

NO SCALE

DISTRIBUTION:	DATE:
25% SUBMISSION	06-28-11
75% SUBMISSION	08-11-11
98% SUBMISSION	08-16-11
100% SUBMISSION	09-23-11
PERMIT SET	09-28-11
FINAL PERMIT SET	09-20-13
BULLETIN #1	10-22-14

DRAWING TITLE:
ELECTRICAL LIGHTING DIMENSIONAL PLAN
E2.1A

ACERTUS CONSULTING GROUP, LLC
 14817 West 95th Street
 Lenexa, Kansas 66215
 P 913 322 5150 F 913 322 5155
 www.AcertusGroup.com
 Registered Engineering Firm
 F-11902



petco
 PETCO ANIMAL SUPPLIES STORES, INC.
 SAN ANTONIO, TEXAS 78248
 PETCO GREENVILLE, TX
 6834 WESLEY STREET
 GREENVILLE, TX 75402