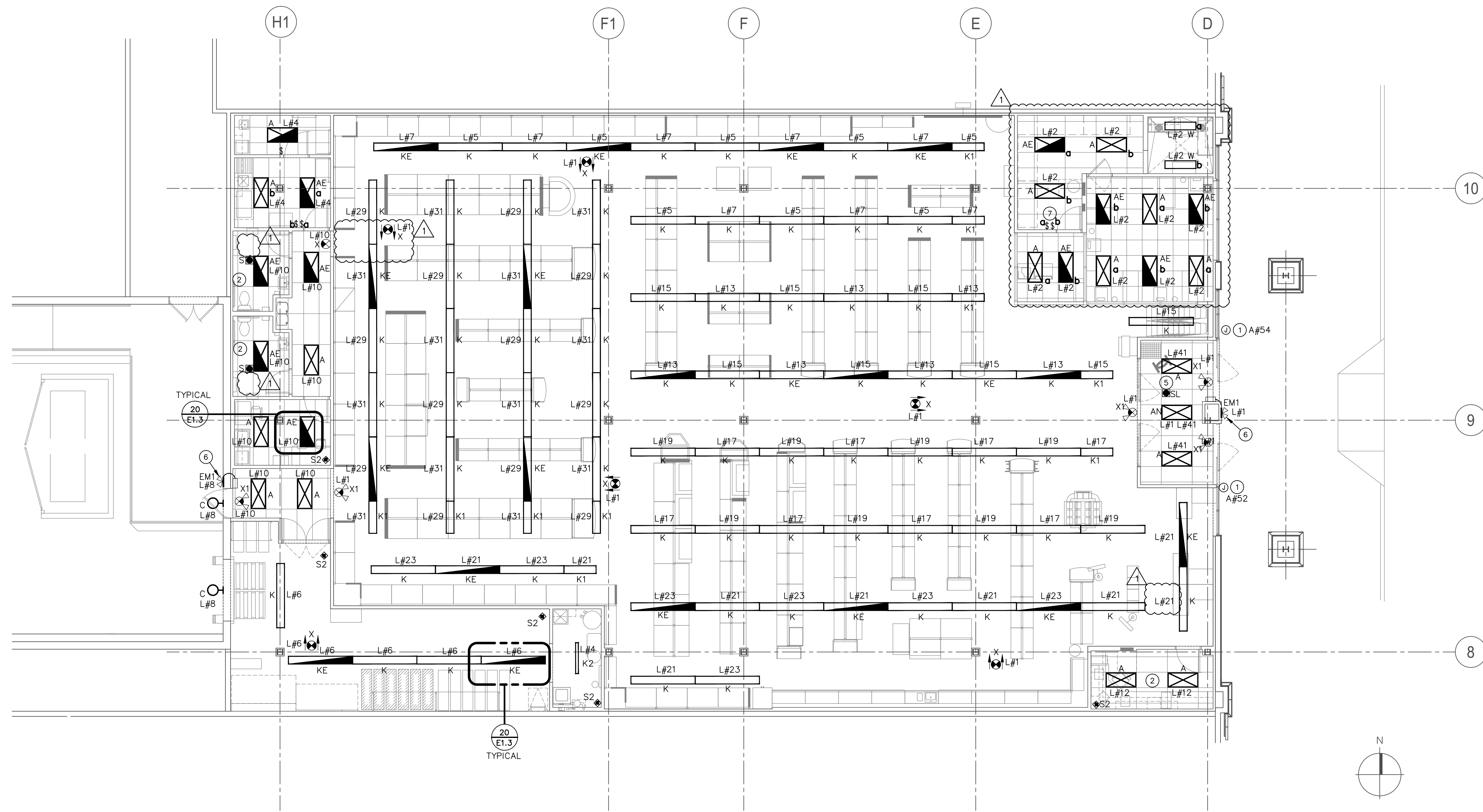


CONTRACTOR(S) SHALL VERIFY EXISTING CONDITIONS AND CORRELATE DIMENSIONS PRIOR TO PROVIDING THE WORK DETAILED IN THESE DRAWINGS. AND SHALL PROMPTLY NOTIFY THE ARCHITECT OF ANY DISCREPANCIES. COPYRIGHT SBLM, ARCHITECTS PC. UNAUTHORIZED REPRODUCTION OR OTHER USE OF THIS DRAWING IS PROHIBITED.



TYPICAL  
20  
E1.3

TYPICAL  
20  
E1.3

**NOTES FOR THIS DRAWING**

- ALL LIGHT FIXTURES TO BE CONNECTED TO PANEL 'L' UON.
- ALL LIGHTING FIXTURES IN SALES AREA CONTROLLED THROUGH THE EMS LIGHTING CONTROL SYSTEM.
- PROVIDE UNSWITCHED LEG FROM SAME CIRCUIT AHEAD OF CONTACTOR FOR FIXTURES WITH EMERGENCY BALLASTS. FIXTURES TO BE CONTROLLED BY EMS OR LOCAL SWITCH AND NOT TO BE NIGHT LIGHTS UNLESS OTHERWISE NOTED.
- CONNECT SWITCHES AND BRANCH CIRCUITS TO OUTLETS, EQUIPMENT AND LIGHTING FIXTURES AS INDICATED ON PLANS AND PANELBOARD SCHEDULES WITH #12 MINIMUM CONDUCTORS IN CONCEALED RACEWAYS. CONDUCTOR SIZES AND QUANTITIES OTHER THAN #12 AWG SHALL BE AS NOTED. ALL FINAL CONNECTIONS TO TRANSFORMERS, MOTORIZED AND VIBRATING EQUIPMENT SHALL BE WITH FLEXIBLE METAL CONDUIT.
- SEE SHEET E2.2 FOR LOCATION OF EXHAUST FANS.
- MOUNT ALL EMERGENCY LIGHTING PER E1.1 OR AT 13'-0" AFF.
- CEILING MOUNTED OCCUPANCY SENSOR SHALL CONTROL LIGHTING IN ROOMS IDENTIFIED EXCEPT NIGHT LIGHTING. COORDINATE WITH ALL OTHER TRADES BEFORE FINAL PLACEMENT. SET TIME DELAY FOR ALL CEILING SENSORS AT 15 MINUTES.
- SEE SHEET E1.1 FOR LIGHTING FIXTURE MOUNTING HEIGHT SCHEDULE.

- LOWER CASE LETTER (E.G. "a", "b") AT SWITCHES AND LUMINAIRES INDICATES SWITCHING ARRANGEMENT.
- EGRESS LIGHTING SHALL BE PROVIDED BY SELF-CONTAINED BATTERY PACKS OR BATTERY BALLASTS INTEGRAL TO THE LIGHTING FIXTURES TO PROVIDE 1 FC AVERAGE THROUGHOUT PATHS OF EGRESS, WIRED TO THE NIGHT LIGHT CIRCUIT EXCEPT WHERE NOTED.
- OUTSIDE WEATHERPROOF EMERGENCY HEADS ARE TO BE LOCATED AT EACH EXIT DOOR.
- EXIT LIGHTS SHALL HAVE SELF-CONTAINED BATTERY PACKS.
- THE PLANS INDICATE THE MINIMUM NUMBER OF EMERGENCY LIGHTS AND EXIT SIGNS REQUIRED. THE CONTRACTOR SHALL PROVIDE ANY ADDITIONAL FIXTURES REQUIRED BY LOCAL AUTHORITIES HAVING JURISDICTION TO PROVIDE REQUIRED MINIMUM LIGHT LEVEL AND DIRECTIONAL SIGNS.

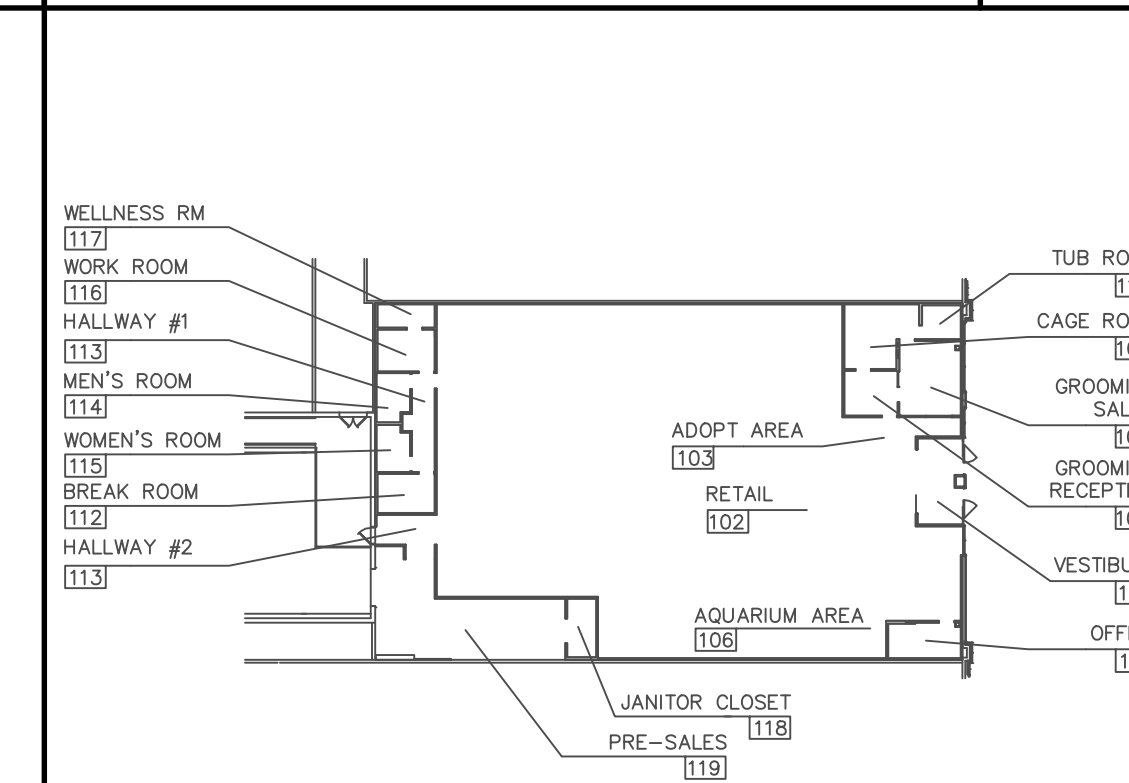
**KEYNOTES (SYMBOLS ①, ② ETC.)**

- JUNCTION BOX FOR SIGN ON INTERIOR FACE OF WALL. VERIFY LOCATION AND CONNECTIONS IN FIELD. SIGNS CONTROLLED THROUGH THE EMS SYSTEM. THE CONTRACTOR SHALL PROVIDE MATERIALS AND FINAL ELECTRICAL CONNECTIONS FROM THE POINT OF ROUGH WIRING AND STUB-OUT AT THE INTERIOR FACE OF THE EXTERIOR WALL.
- THIS ROOM WILL HAVE BATT INSULATION IN CEILING. MAINTAIN ADEQUATE CLEARANCE FOR LIGHT FIXTURE INSTALLATION.
- NOT USED.
- NOT USED.
- PROVIDE LIGHT SENSOR FOR VESTIBULE NORMAL LIGHTING.
- CONNECT THIS EMERGENCY FIXTURE TO THE CIRCUIT BREAKER FEEDING THE EXTERIOR WALL PACK LIGHT FIXTURES AHEAD OF CONTACTOR CONTROLLING THE LIGHTING.
- SWITCHES WITH PILOT LIGHTS.

**ELECTRICAL LIGHTING PLAN**

REF.: 1/8" = 1'-0"

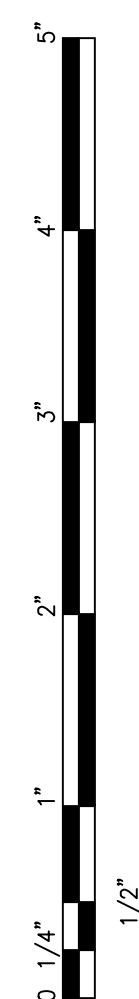
06



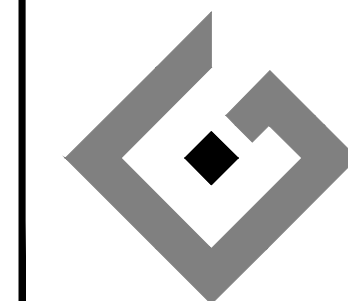
**KEY PLAN**

REF.: NO SCALE

01



**ACERTUS CONSULTING GROUP, LLC**  
14817 West 95th Street  
P 913 322 5150 F 913 322 5155  
www.AcertusGroup.com  
Registered Engineering Firm  
E-11902



**petco.**  
PETCO ANIMAL SUPPLIES STORES, INC. 6834 WESLEY STREET GREENVILLE, TX 75402  
PETCO "GREENVILLE, TX"SAN ANTONIO, TEXAS "TRAK"

DISTRIBUTION:	DATE:
25% SUBMISSION	06-28-11
75% SUBMISSION	08-11-11
98% SUBMISSION	08-16-11
100% SUBMISSION	09-23-11
PERMIT SET	09-28-11
FINAL PERMIT SET	09-20-13
BULLETIN #1	10-22-14

DRAWING TITLE:	
ELECTRICAL LIGHTING PLAN	
<b>E2.1</b>	