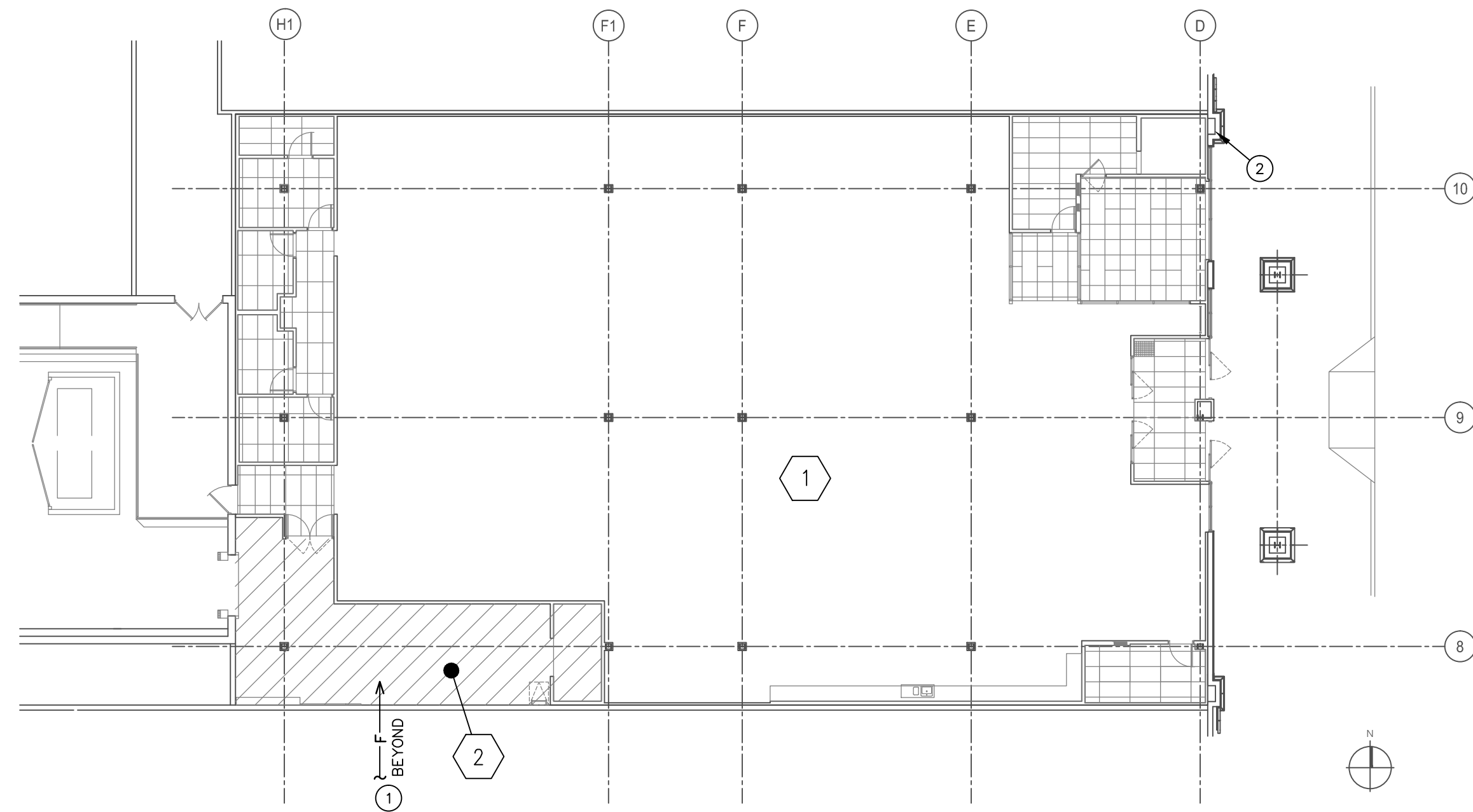


CONTRACTOR(S) SHALL VERIFY EXISTING CONDITIONS AND CORRELATE DIMENSIONS PRIOR TO PROVIDING THE WORK DETAILED IN THESE DRAWINGS. AND SHALL PROMPTLY NOTIFY THE ARCHITECT OF ANY DISCREPANCIES.
 © COPYRIGHT SBLM, ARCHITECTS PC. UNAUTHORIZED REPRODUCTION OR OTHER USE OF THIS DRAWING IS PROHIBITED.



NOTE:
 REFER TO SPECIFICATIONS FOR
 LIMITATIONS AND SPECIFIC REQUIREMENTS
 AND CRITERIA FOR PETCO AND PETCO'S
 INSURANCE CARRIERS

FIRE SUPPRESSION GENERAL NOTES

- INCLUDE ALL REQUIRED PIPING, OFFSETS, HEADS, RISERS, DROPS AND ALL NECESSARY ITEMS TO PROVIDE A COMPLETE SPRINKLER SYSTEM APPROVED BY ALL GOVERNING AGENCIES. ARRANGE FOR/ OR MAKE AND PAY FOR THE REQUIRED "FLOW TEST" IN THE STREET MAINS IN ORDER TO DETERMINE THE ACTUAL SPRINKLER SYSTEM FINAL DESIGN. THE CONTRACTOR SHALL HYDRAULICALLY CALCULATE THE REQUIRED PIPE SIZES. CONFIRM PIPING ROUTING WITH ARCHITECT.
- HIRE A PROFESSIONAL ENGINEER LICENSED IN THE STATE AND QUALIFIED TO PREPARE THE NECESSARY COORDINATED DRAWINGS, CALCULATIONS, AND EQUIPMENT SPECIFICATION AND SUBMIT THESE ALONG WITH ALL OTHER REQUIRED INFORMATION AND DATA TO THE PROJECT ARCHITECT/ENGINEER AND TO ALL AUTHORITIES HAVING JURISDICTION, I.E. STATE AND/OR LOCAL AGENCIES, INSURANCE COMPANY, APPROVAL AGENCY, THE LOCAL FIRE MARSHAL, ISO, ETC.
- COORDINATE THE SPRINKLER SYSTEM LAYOUT WITH ALL TRADES INCLUDING, BUT NOT LIMITED TO, HEATING VENTILATING AND AIR CONDITIONING, SHEET METAL, PLUMBING, ELECTRICAL, CEILING AND STRUCTURAL STEEL. REFER TO THE REFLECTED CEILING PLAN FOR THE EXACT LAYOUT OF SPRINKLER HEADS IN RELATION TO CEILING GRID WHERE APPLICABLE.
- THE COMPLETED SPRINKLER SYSTEM INCLUDING ALL COMPONENTS AND THEIR INSTALLATION SHALL BE IN STRICT ACCORDANCE WITH ALL APPLICABLE CODES.
- IF INSTALLATION OF SPRINKLER SYSTEM COMMENCES PRIOR TO RECEIPT OF APPROVED SHOP DRAWINGS, MAKE ALL NECESSARY CHANGES TO PIPING AT NO ADDITIONAL COST TO THE OWNER.
- ALL PIPING THAT PENETRATES WALLS SHALL BE SLEEVED AND HAVE ESCUTCHEONS. ANY PENETRATIONS THROUGH FIRE RATED PARTITIONS SHALL BE SEALED WITH SCOTCH-3M #FS195 WRAP AND #CP25 CAULK AS PER MANUFACTURER'S RECOMMENDATIONS.
- SEE ARCHITECTURAL DRAWINGS FOR REFLECTED CEILING PLAN.
- PROVIDE ADDITIONAL SPRINKLER HEADS BELOW HVAC DUCTWORK AND OVERHEAD DOORS TO CONFORM WITH THE REQUIREMENTS OF NFPA 13 AND LOCAL AUTHORITIES. FURNISH AND INSTALL DRY SPRINKLER HEADS ABOVE SUSPENDED CEILING AND/OR TYPE SPRINKLER SYSTEM IN CANOPY WHERE REQUIRED BY LOCAL JURISDICTION.
- ALL EXPOSED PIPING MUST BE FREE OF RUST UPON COMPLETION OF INSTALLATION. PIPING WITH APPARENT RUST MUST BE CLEANED AND PAINTED PRIOR TO APPROVAL BY ARCHITECT.
- IN AREAS WITH LAY-IN CEILINGS, SPRINKLER HEADS SHALL BE LOCATED IN THE CENTER OF THE TILE IN THE 2'-0" DIRECTION ONLY.
- WHERE REQUIRED PROVIDE 1-1/2" CLASS # FIRE HOSE CABINET SUCH AS MANUFACTURED BY POTTER-ROMER, INC. PROVIDE AND INSTALL #1024-A CABINET WITH #1952 DECAL (3" HORIZONTAL RED "FIRE HOSE"). #2010-A-1-1/2" HOSE ASSEMBLY WITH #2935 COUPLINGS AND #2947 NOZZLE. CONNECT TO NEAREST SOURCE 4" FIRE SPRINKLING MAIN LINE. CONFIRM EXACT LOCATION.
- SHOP DRAWINGS SHALL INCLUDE THE FOLLOWING INFORMATION:
 A. AVAILABLE STATIC AND RESIDUAL WATER PRESSURE.
 B. AVAILABLE WATER FLOW IN GALLONS PER MINUTE AND DURATION.
 C. SOURCE OF WATER SUPPLY.
 D. CLASSIFICATION OF HAZARDS.
 E. OCCUPANCY USE OF THE BUILDING.
 F. TYPE OF SYSTEM(S) TO BE INSTALLED.
 G. APPLICABLE NFPA STANDARDS TO BE FOLLOWED FOR EACH COMPONENT OF THE SYSTEM(S).
 H. OTHER STATE AND LOCAL STATUTES, REGULATIONS, CODES OR ORDINANCES THAT MUST BE FOLLOWED.
 I. NAME, ADDRESS, AND PHONE NUMBER OF THE SPRINKLER SYSTEM DESIGN ENGINEER OF RECORD.
 J. OTHER INFORMATION REQUIRED BY THE STATE OR MUNICIPALITY.

- DOCUMENTS SHALL BEAR THE SIGNATURE AND SEAL AND BE DATED BY THE SPRINKLER CONTRACTOR'S DESIGN ENGINEER.
- REFER TO ARCHITECTURAL PLANS FOR APPLICABLE CODES, CONSTRUCTION TYPE(S), OCCUPANCY CLASSIFICATION, AND BUILDING SQUARE FOOTAGE(S).
 - PROVIDE METAL PLACARD WITH SYSTEM HYDRAULIC CHARACTERISTICS IN ACCORDANCE WITH NFPA 13, AND FASTEN TO THE FIRE SPRINKLER RISER. FASTEN WITH METAL STRAPPING OR WORM GEAR STRAPS TOP & BOTTOM (PLASTIC ZIP TIES ARE NOT ACCEPTABLE).
 - MAXIMUM 130 SOFT HEAD SPACING IN ALL AREAS EXCEPT STOCK ROOM MAXIMUM 100 SOFT.
 - MISCELLANEOUS STORAGE THAT DOES NOT EXCEED 12 FEET IN HEIGHT IS PRESENT IN SMALL AREAS BUT DOES NOT EXCEED 10 PERCENT OF THE BUILDING AREA OR 4,000 SQUARE FEET OF THE SPRINKLERED AREA. SUCH STORAGE DOES NOT EXCEED MORE THAN A 1,000 SQUARE FEET IN ONE PILE AREA AND IS SEPERATED FROM OTHER STORAGE BY AT LEAST 25 FEET PER NFPA 3.9.1.14
 - FIRST CONTROL VALVE MUST BE LOCATED A MINIMUM OF 2 FEET FROM UNDERGROUND ENTRY. IN NO CASE SHALL AN INDICATING CONTROL VALVE NOT BE LOCATED WITHIN 2 FEET OF THE WATER ENTRY INTO THE BUILDING.
 - PROVIDE SIDE WALL SPRINKLER HEAD BELOW OVERHEAD DOOR IN OPEN POSITION (IF REQUIRED).
 - WHEN A PLATFORM EXISTS. PROVIDE A PROTECTIVE SPRINKLER HEAD CAGE FOR SPRINKLER(S) AT THE JANITOR'S CLOSET AND AT THE PLATFORM.
 - INSTALL SPRINKLER PIPING AS TIGHT TO ROOF DECK AS POSSIBLE.

NOTES FOR THIS PROJECT

- AT THE DISCRETION OF THE CONTRACTOR AND WITH THE APPROVAL OF THE PETCO PM, LOCAL AUTHORITY HAVING JURISDICTION AND IN ACCORDANCE WITH ALL LOCAL, STATE AND NFPA CODES ALL OR PARTS OF THE EXISTING SYSTEM(S) MAY BE REUSED AND MODIFIED. IN AREAS CONTAINING A CEILING, THE SPRINKLER HEADS AND MAINS SHALL BE RELOCATED AS REQUIRED TO COORDINATE WITH THE NEW DIFFUSER AND LIGHTING LAYOUT, AND WITH THE NEW CEILING HEIGHT(S). THIS MAY INCLUDE BUT NOT BE LIMITED TO THE MODIFICATION OR RELOCATION OF BRANCH OR MAIN SPRINKLER PIPING AND SPRINKLER HEADS. THE FINAL SPRINKLER HEAD LAYOUT WILL BE BASED UPON THE FINAL FIXTURE PLAN LAYOUT. SEE ARCHITECTURAL DRAWINGS FOR FINAL LAYOUT.

FIRE SUPPRESSION KEY NOTES

- FIRE SERVICE ENTRANCE BEYOND.
- ALTERNATE LOCATION FOR INSPECTOR'S TEST IN FURRED OUT WALL BEHIND ACCESS PANEL. IF INSPECTOR'S TEST IS NOT ALLOWED AT RISER PER LOCAL A.H.J. VERIFY LOCATION WITH PETCO PROJECT MANAGER PRIOR TO DESIGN AND INSTALLATION OF SPRINKLER SYSTEM. REFER TO PROJECT MANUAL FOR ACCESS PANEL SPECIFICATIONS.

FIRE SUPPRESSION CRITERIA

- RETAIL, GROOMING & ALL SUPPORT AREAS (LESS PRE-SALES):
 ORDINARY HAZARD GROUP II, NFPA 13 SECTION 5.3.1. THE DENSITY IS .20 GPM / SQFT. OVER 1,500 SQFT PLUS 250 GPM HOSE ALLOWANCE. MAXIMUM SPRINKLER SPACING OF 130 SOFT PER HEAD WITH NO DEDUCTIONS ALLOWED. SPRINKLERS SHALL BE 165 DEGREE WITH A MINIMUM K-FACTOR OF 5.6K.
- PRE-SALES AREA:
 EXTRA HAZARD GROUP I, NFPA 13 SECTION 13.2.1 WITH A DENSITY OF .30 GPM / SQFT. OVER ENTIRE AREA PLUS 500 GPM HOSE ALLOWANCE. MAXIMUM SPRINKLER SPACING OF 100 SOFT PER HEAD WITH NO DEDUCTIONS ALLOWED. SPRINKLERS SHALL BE 286 DEGREE WITH A MINIMUM K-FACTOR OF 8.0K.

REDUCED SCALE PLAN 08

REF.: 1/16"=1'-0"

OCCUPANCY CLASSIFICATIONS AND DESIGN DENSITIES

TAG	AREA	PRODUCT/USE	METHOD OF STORAGE OR DISPLAY	DENSITY
1	RETAIL, GROOMING AND ALL SUPPORT AREAS (LESS PRE-SALES)	LIVE ANIMALS, SUPPLIES AND ACCESSORIES, SOME PLASTICS STORED AT MAX 8'-0"	STANDARD RETAIL SALES, ISLAND GONDOLAS, W/ SHELVES BACK TO BACK 34" TOTAL WIDTH, MAX 8'-0" HIGH, PERIMETER GONDOLAS MAX 8'-0" HIGH	SEE FIRE SUPPRESSION CRITERIA.
2	PRE-SALES	RACK STORAGE, SOME PALLETIZED STORAGE AND IDLE WOOD PALLETS	ONE PERIMETER RACK MAX 12' HIGH, MERCHANDISE TO MAX 12' HIGH AND IDLE WOOD PALLETS TO MAX 6' HIGH	SEE FIRE SUPPRESSION CRITERIA.

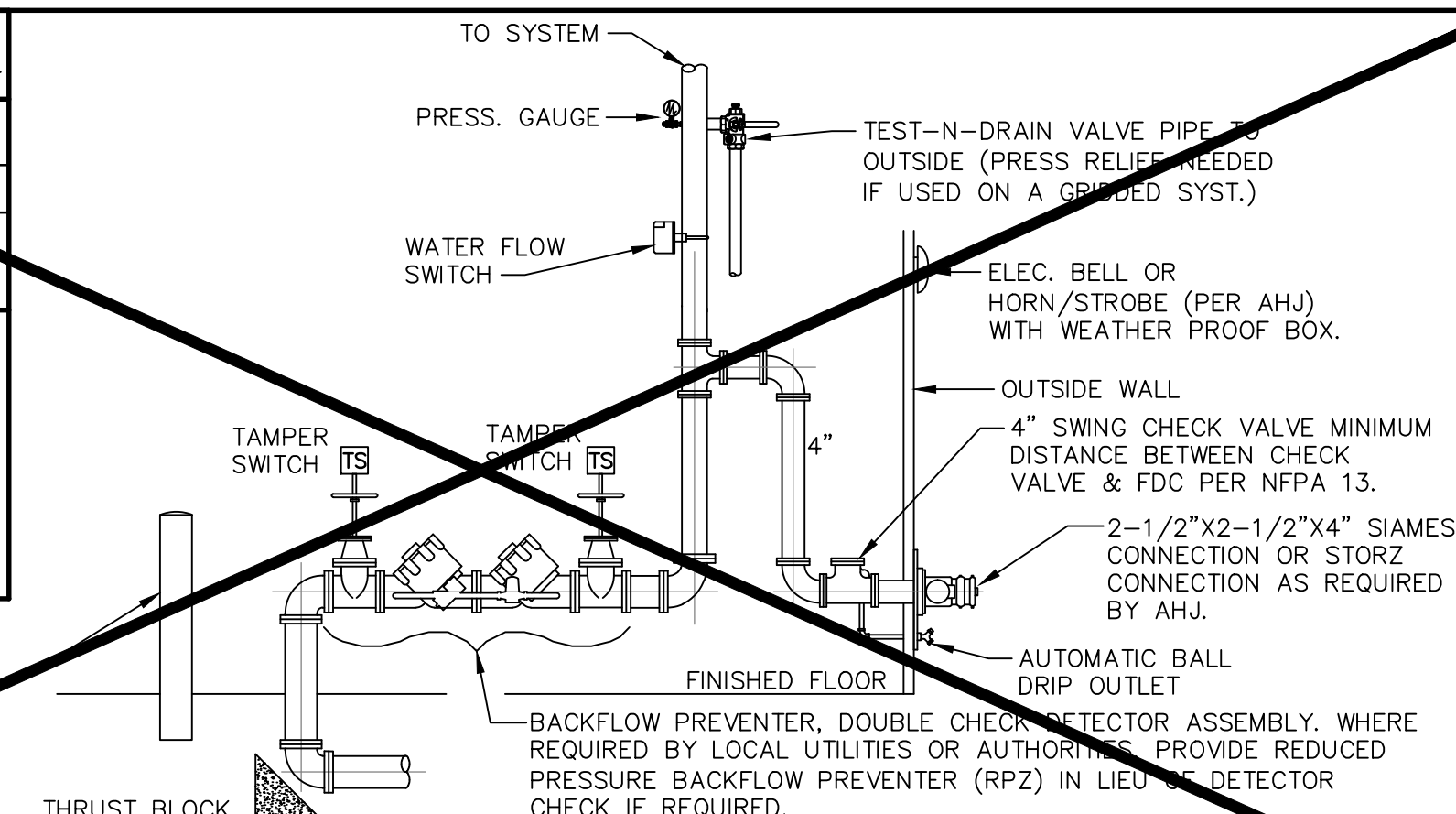
CODE ANALYSIS 03

REF.: NO SCALE

DOUBLE CHECK DETECTOR ASSEMBLY ACCEPTABLE MANUFACTURER AND MODEL	
MANUFACTURER	MODEL
WATTS	709DCDA
WILKINS	950DA
AMES	3000DCDA

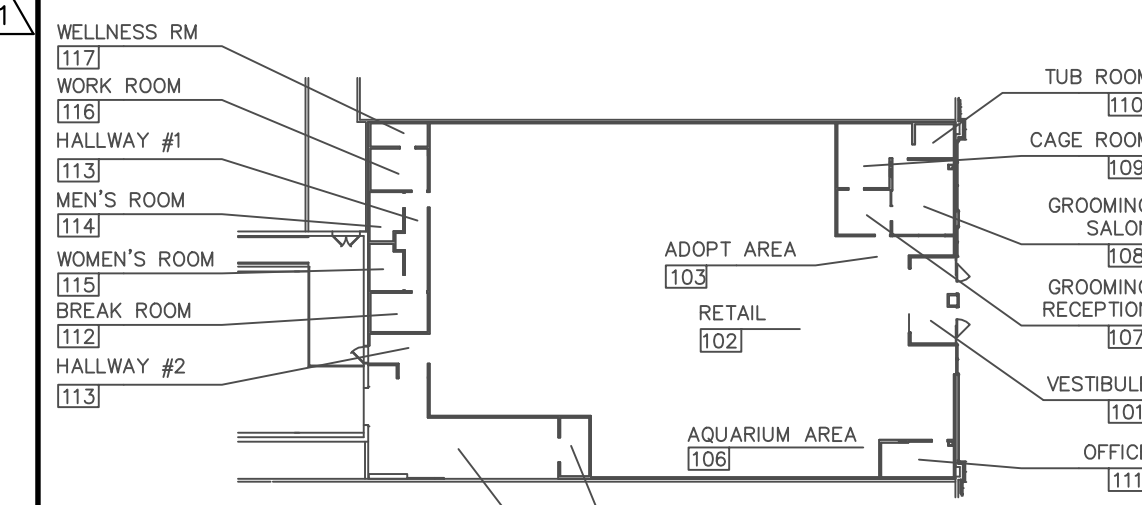
NOTE:
 BACKFLOW PREVENTER MAY BE MOUNTED VERTICALLY IN ACCORDANCE WITH MANUFACTURER'S REQUIREMENTS AND IF DEEMED ACCEPTABLE BY THE AUTHORITY HAVING JURISDICTION, BUT IN NO CASE SHALL THE ALARM VALVE BE MOUNTED OUTSIDE OF ACCEPTABLE CLEARANCE OR ACCESSIBILITY LIMITS.

PROVIDE PIPE BOLLARD(S) AS REQUIRED TO PREVENT DAMAGE BY PALLET JACKS, ETC.



AUTOMATIC SPRINKLER RISER 04

REF.: 08/F1.1 NO SCALE



KEY PLAN 01

REF.: NO SCALE

ACERTUS CONSULTING GROUP, LLC
 14817 West 95th Street ♦ Lenexa, Kansas 66215
 P 913 322 5150 ♦ F 913 322 5155
 www.AcertusGroup.com
 Registered Engineering Firm F-11902

petco. PETCO "GREENVILLE, TX"
 SUPPLIES STORES, INC. 6834 WESLEY STREET
 GREENVILLE, TX 75402

DISTRIBUTION:	DATE:
25% SUBMISSION	06-28-11
75% SUBMISSION	08-11-11
98% SUBMISSION	08-16-11
100% SUBMISSION	09-23-11
PERMIT SET	09-28-11
FINAL PERMIT SET	09-20-13
BULLETIN #1	10-22-14

DRAWING TITLE:
FIRE SUPPRESSION GENERAL INFORMATION AND SCHEDULES
F1.1