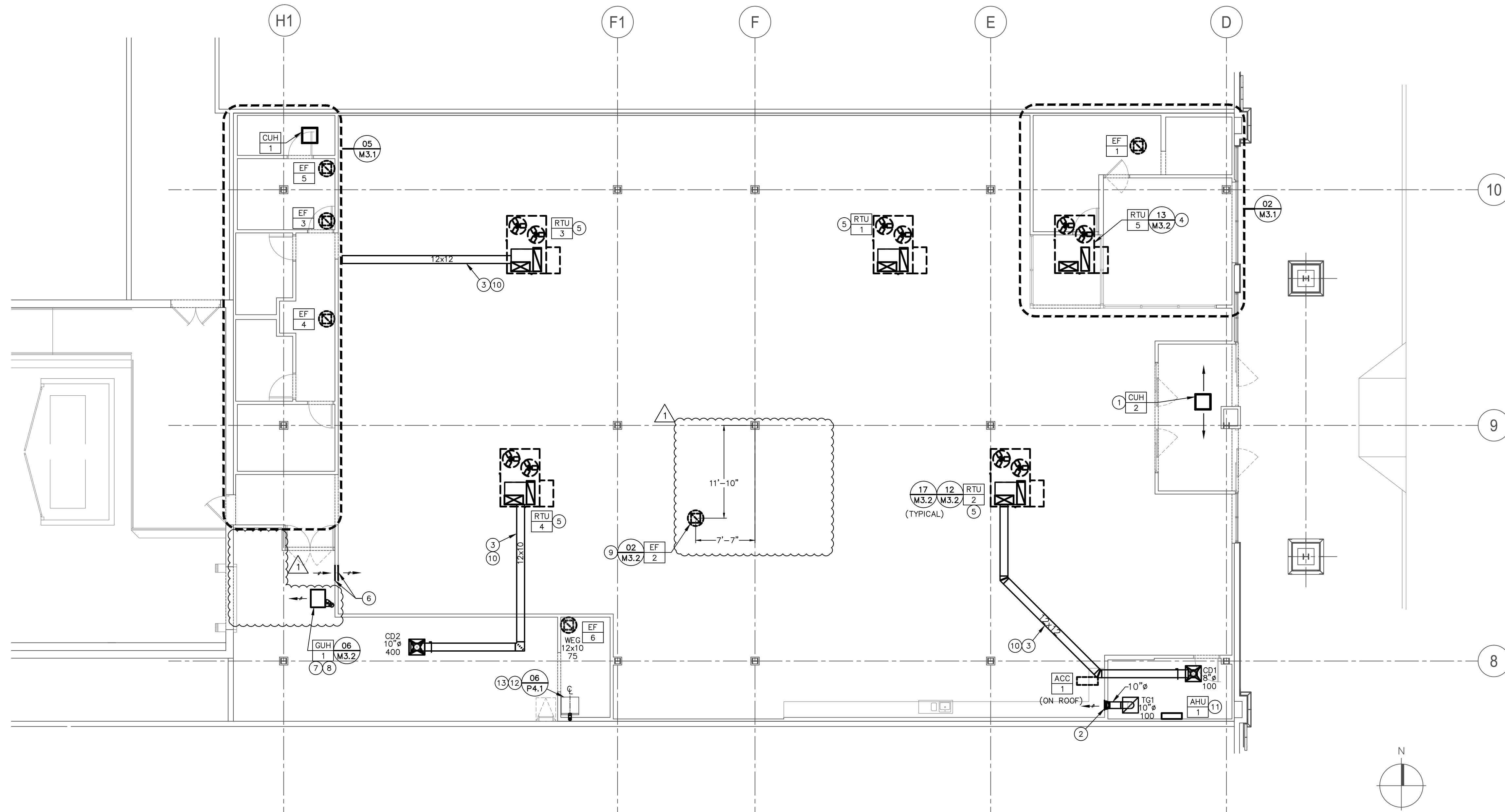


CONTRACTOR(S) SHALL VERIFY EXISTING CONDITIONS AND CORRELATE DIMENSIONS PRIOR TO PROVIDING THE WORK DETAILED IN THESE DRAWINGS. AND SHALL PROMPTLY NOTIFY THE ARCHITECT OF ANY DISCREPANCIES.  
 © COPYRIGHT SBLM, ARCHITECTS PC. UNAUTHORIZED REPRODUCTION OR OTHER USE OF THIS DRAWING IS PROHIBITED.



**NOTES FOR THIS DRAWING**

- SEE STRUCTURAL DRAWINGS FOR EXACT PLACEMENT OF ROOFTOP HVAC UNITS, EXHAUST FANS, SUPPLY AIR AND RETURN AIR OPENINGS AND LOCATIONS THROUGH ROOF. CAREFULLY LOCATE ROOFTOP UNITS SUCH THAT CONCENTRIC DIFFUSERS FALLS IN A STRUCTURAL BAY.
- REFER TO ARCHITECTURAL REFLECTED CEILING PLAN FOR EXACT PLACEMENT OF CEILING DIFFUSERS AND GRILLES.
- TEMPERATURE IN THE WELLNESS ROOM MUST BE MAINTAINED BETWEEN 74°F AND 78°F.
- EXHAUST FANS IN OPEN RETAIL AREA ARE DIMENSIONED SO THAT THE EQUIPMENT IS LOCATED IN CLOSE PROXIMITY TO THE STORE FIXTURES THEY ARE SERVING. THE PURPOSE IS TO MINIMIZE ANY OFFSETTING OF DUCTWORK FOR COST AND AESTHETIC REASONS. CONTRACTOR MAY LOCATE FANS UP TO 12" FROM LOCATION SHOWN TO AVOID STRUCTURE AND OTHER INTERFERENCES. VERIFY WITH PETCO PROJECT MANAGER DURING THIS PROCESS.

- UNLESS OTHERWISE NOTED, ALL DUCTWORK IS RECTANGULAR SHEET METAL. EXPOSED SUPPLY AND RETURN DUCTWORK SHALL BE INTERNALLY LINED, WHILE ALL CONCEALED SUPPLY DUCTWORK SHALL BE WRAPPED. REFER TO PROJECT MANUAL FOR DETAILS. THE CONTRACTOR, AT HIS DISCRETION, MAY USE ROUND DUCTWORK WITH PROPERLY INSTALLED EXTERNAL DUCT WRAP INSULATION IN CONCEALED AREAS, AND MAY USE ROUND OR SPIRAL, (INTERNALLY LINED WHERE APPLICABLE DUCTWORK IN EXPOSED AREAS.
- IN EXPOSED AREAS, ROOF OPENINGS FOR HVAC EQUIPMENT SHALL BE LIMITED, WHERE POSSIBLE AND PRACTICAL, TO ACCOMMODATE THE DUCT OPENINGS AND NO MORE, THE INTENT BEING TO MAINTAIN A NEAT AND AESTHETICALLY PLEASING FINISHED PRODUCT WITH AS MUCH OF THE ROOF ITSELF INTACT AS POSSIBLE.
- REFER TO SHEET E2.5 FOR CONTROL DEVICES.
- SEE ARCHITECTURAL DRAWINGS WITH RESPECT TO PROVIDING WASHABLE CEILING TILES, FOR PROJECTS THAT WILL REQUIRE A DROPPED CEILING ON THE SALES FLOOR, ADJACENT TO THE DIFFUSERS FOR A DISTANCE OF 4 FT. RADIUS FROM DISCHARGE OF THE DIFFUSER'S EDGE.

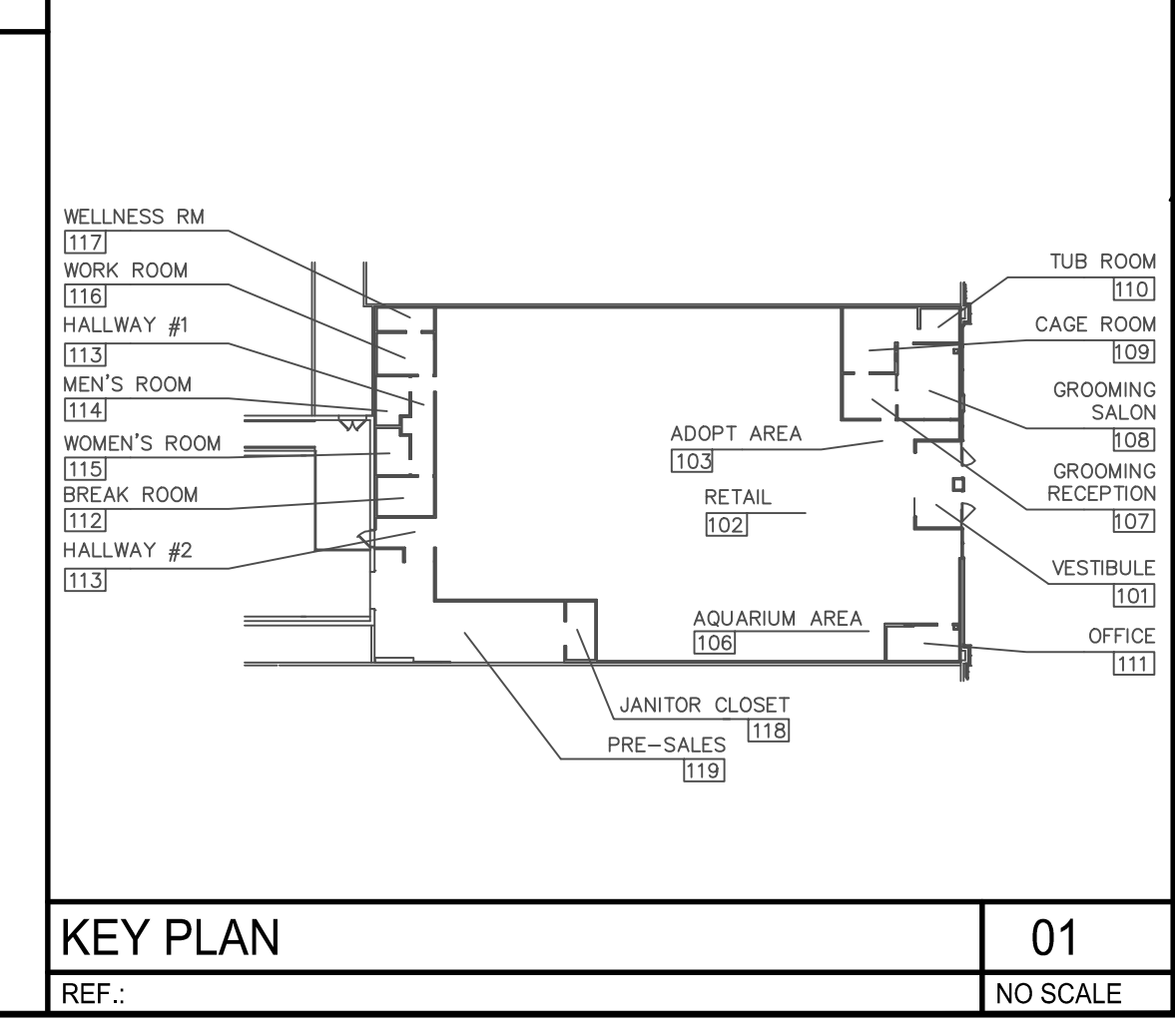
**KEYNOTES (SYMBOLS ①, ② ETC.)**

- ORIENT CUH SUCH THAT AIRFLOW PATTERN IS AS INDICATED.
- 12" X 12" WALL TRANSFER GRILLE. MOUNT BOTTOM AT 14'-2" AFF.
- COORDINATE WITH ALL OTHER TRADES PRIOR TO INSTALLATION OF THIS DUCTWORK.
- LOCATE THIS ROOFTOP UNIT SUCH THAT THE SUPPLY AND RETURN DUCTWORK FROM THE UNIT ARE WITHIN THE WALLS SURROUNDING THIS AREA (NO EXPOSED DUCTWORK ON RETAIL SIDE OF WALL).
- THE ROOFTOP PACKAGE INCLUDES A PREFABRICATED CONCENTRIC RETURN/SUPPLY DIFFUSER FOR EACH ROOFTOP UNIT AS SHOWN. FABRICATE SHEET METAL DUCT EXTENSION TO MEET PROPER OUTLET HEIGHT. OUTLET HEIGHT SHALL RANGE BETWEEN 16'-0" AFF TO BOTTOM OF DIFFUSER (MIN.) AND 8" BELOW STEEL TO TOP OF DIFFUSER (MAX.). ALL DIFFUSERS SHALL BE THE SAME HEIGHT. PROVIDE MISC. STEEL (CHANNELS, ANGLES, ETC.) TO SUPPORT DUCTS, DIFFUSER, PLENUM AS REQUIRED. CONNECT MISCELLANEOUS STEEL TO BUILDING STRUCTURE IN A MANNER ACCEPTABLE TO THE ARCHITECT. ADJUST THE PATTERN OF THE SUPPLY AIR OUTLETS AS REQUIRED TO PROVIDE APPROXIMATELY EQUAL AIR QUANTITIES AND FULL COVERAGE OF THE

- RETAIL AREA. IF REQUIRED BY FIELD CONDITIONS, IRREGULAR AIR FLOW PATTERNS OR UNEQUAL AIR FLOWS MAY BE OBTAINED BY CLOSING FRONT VANES AT ENDS OF OUTLETS.
- 14" X 14" WALL TRANSFER GRILLE. MOUNT BOTTOM AT 14'-2" AFF.
  - PROVIDE DOUBLE WALL VENT UP THROUGH ROOF WITH WEATHER CAP. SEE DETAIL 06/M3.2 FOR ADDITIONAL INFORMATION AND SPECIFICATIONS. TERMINATE NOT LESS THAN 5'-0" ABOVE TOP OF UNIT HEATER AND IN NO CASE LESS THAN REQUIRED BY DETAIL 06/M3.2. PROVIDE LISTED ADAPTER AND CONNECTION TO UNIT. LIMIT HORIZONTAL RUN TO A MAXIMUM OF 2'-0" AND LIMIT QUANTITY OF ELBOWS TO ONE (1).
  - SUPPORT FOUR (4) PLACES WITH 3/8" ALL THREAD WITH VIBRATION ISOLATOR FROM UNISTRUT SPANNING BOTTOM CORD OF JOISTS. MAINTAIN CLEARANCES TO COMBUSTIBLES AS PUBLISHED BY THE MANUFACTURER. MOUNT TOP 1'-0" BELOW BOTTOM OF BAR JOISTS OR AT 14'-0" AFF, WHICHEVER IS LOWER.
  - 8" SPIRAL DUCT FROM ROOF EXHAUST FAN, OFF-SETTING IN JOIST SPACE AS NECESSARY AND DROP TO HABITATS. COORDINATE INSTALLATION WITH PETCO VENDOR. SEE 02/M3.2 FOR MORE INFORMATION.

- DUCTWORK SHALL BE INSTALLED AS HIGH AS POSSIBLE AND SHALL BE INSTALLED ABOVE LIGHTS. TRANSITION DUCTWORK AS REQUIRED AND COORDINATE POTENTIAL CONFLICTS WITH PETCO PROJECT MANAGER PRIOR TO ROUGH-IN.
- AHU TO BE MOUNTED ON WALL, TOP OF UNIT 6" TO 12" BELOW CEILING. COORDINATE WITH CEILING HEIGHT AND SHELVE IN THIS AREA. INSTALL CONDENSATE PUMP PER MANUFACTURER'S RECOMMENDATIONS WITH PUMP LOCATED 12"-24" ABOVE CEILING. REFER TO PLUMBING PLANS AND COORDINATE WITH PLUMBING CONTRACTOR FOR CONDENSATE PIPING TO NEARBY MOP SINK OR FLOOR SINK. ROUTE REFRIGERANT LINE UP THROUGH ROOF ABOVE OFFICE CEILING.
- 4" DIAMETER RIGID GALVANIZED DRYER VENT, UP IN WALL SPACE, AND OUT ROOF, AND TERMINATE WITH ROOFCAP WITH BACKDRAFT DAMPER. PROVIDE IN-O-VATE TECHNOLOGIES, MODEL 425 DRYERBOX, IN CENTER OF THE DRYER AT 39" AFF TO THE BOTTOM OF THE BOX. INSTALL PER APPLIANCE MANUFACTURERS INSTRUCTIONS AND LISTED REQUIREMENTS. USE STRAIGHTEST DUCT RUNS POSSIBLE TO OUTSIDE. 25' EQUIVALENT LENGTH MAXIMUM, NO SCREWS IN AIRSTREAM.
- DUCT MOUNT EXHAUST GRILLE AT 8'-0" A.F.F..

**MECHANICAL PLAN** 06  
 REF.: 1/8" = 1'-0"



**KEY PLAN** 01  
 REF.: NO SCALE

**ACERTUS CONSULTING GROUP, LLC**  
 14817 West 95th Street ♦ Lenexa, Kansas 66215  
 P 913 322 5150 ♦ F 913 322 5155  
 www.AcertusGroup.com  
 Registered Engineering Firm  
 E-11902

**petco**  
 PETCO ANIMAL SUPPLIES STORES, INC. PETCO "GREENVILLE, TX"  
 6834 WESLEY STREET GREENVILLE, TX 75402

DISTRIBUTION:	DATE:
25% SUBMISSION	06-28-11
75% SUBMISSION	08-11-11
98% SUBMISSION	08-16-11
100% SUBMISSION	09-23-11
PERMIT SET	09-28-11
FINAL PERMIT SET	09-20-13
BULLETIN #1	10-22-14

**MECHANICAL PLAN**  
**M2.1**