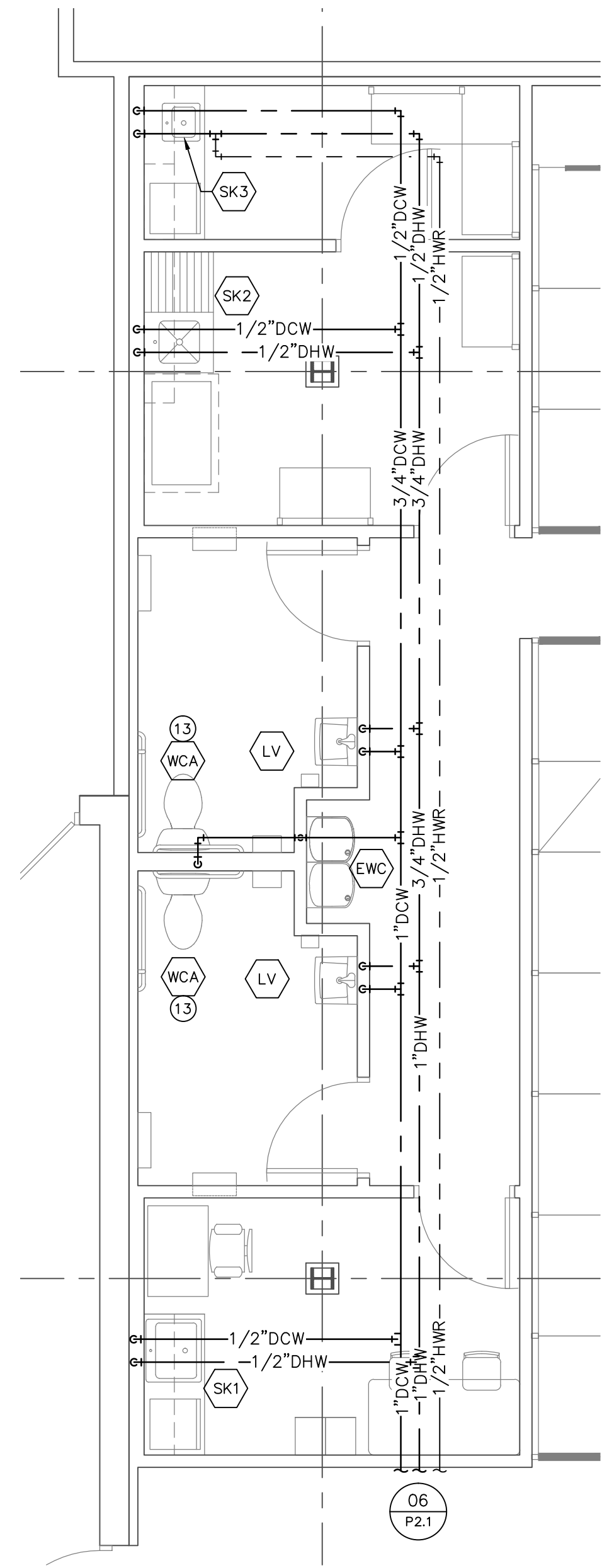
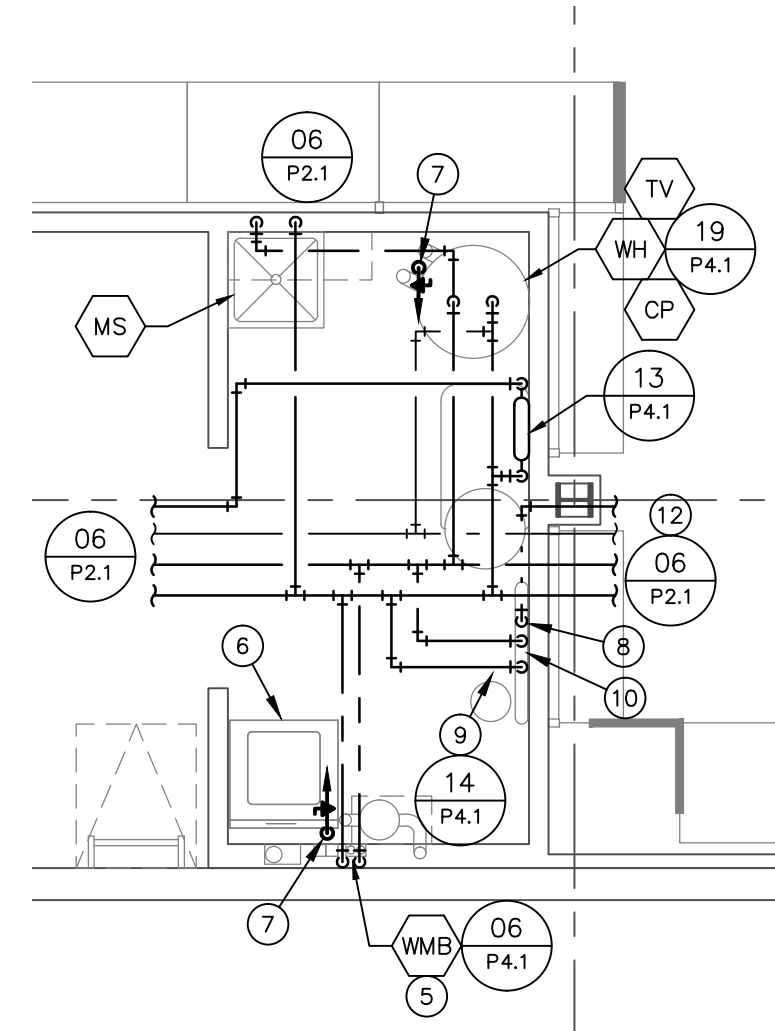


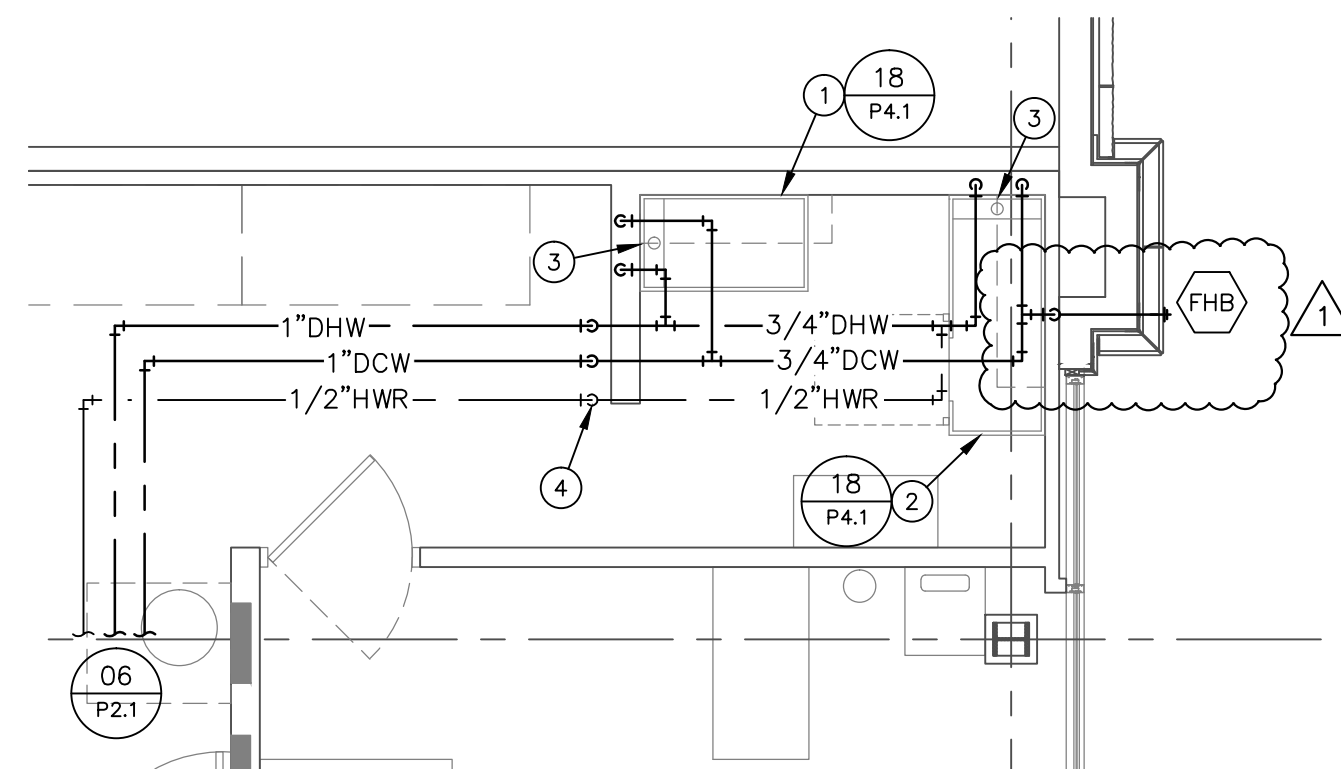
CONTRACTOR(S) SHALL VERIFY EXISTING CONDITIONS AND CORRELATE DIMENSIONS PRIOR TO PROVIDING THE WORK DETAILED IN THESE DRAWINGS. AND SHALL PROMPTLY NOTIFY THE ARCHITECT OF ANY DISCREPANCIES.
 © COPYRIGHT SBLM, ARCHITECTS PC. UNAUTHORIZED REPRODUCTION OR OTHER USE OF THIS DRAWING IS PROHIBITED.



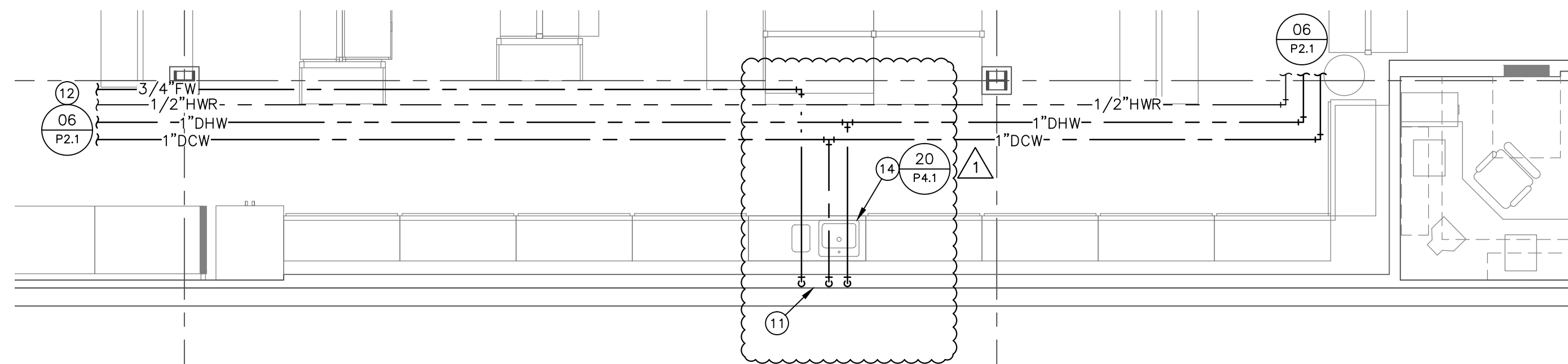
LARGE SCALE SUPPORT AREA PLAN 04
 REF.: 06/P2.1 1/4" = 1'-0"



LARGE SCALE JANITOR'S CLOSET PLAN 22
 REF.: 06/P2.1 1/4" = 1'-0"



LARGE SCALE GROOMING SALON PLAN 12
 REF.: 06/P2.1 1/4" = 1'-0"



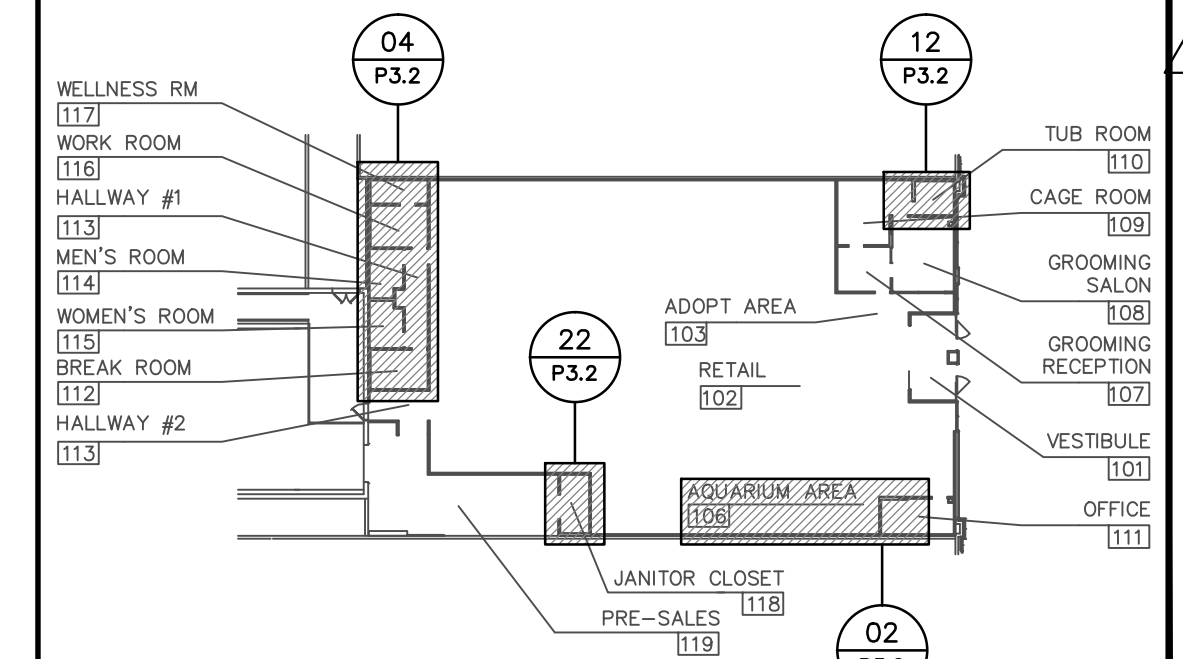
LARGE SCALE AQUARIUM AREA PLAN 02
 REF.: 06/P2.1 1/4" = 1'-0"

NOTES FOR THIS DRAWING

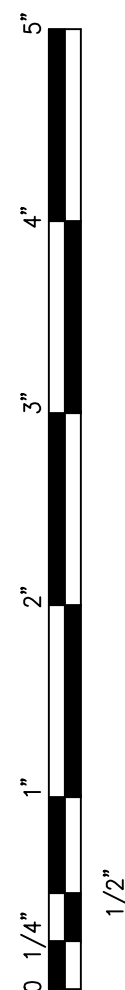
1. INSTALL WATER PIPING AS HIGH AS POSSIBLE AT/TO ROOF STRUCTURE. COORDINATE WITH ROOF OPENINGS FOR ROOF HATCH, EXHAUST FANS AND RTU'S.
2. WATER PIPING IN OUTSIDE WALLS SHALL BE INSTALLED WITHIN BUILDING INSULATION ENVELOPE. CHECK FOR ALL BREACHES PRIOR TO INSTALLATION OF FINISHED WALL.
3. VERIFY ALL DIMENSIONS WITH THE PETCO VENDORS.
4. ALL DIMENSIONS ARE FROM THE INSIDE FACE OF UNFINISHED WALL.
5. ALL WATER PIPING UNDER SLAB SHALL BE TYPE 'K' COPPER IN ARMAFLEX. NO FITTINGS ARE PERMITTED UNDER THE SLAB. STUB UP FROM SLAB SHALL BE FITTED WITH 1/4 TURN BALL VALVE AT 12" AFF, WITH 3/4" FEMALE THREADS FOR CONNECTION BY PETCO VENDOR.
6. SHEET ROCK AND FRP BOARD ARE TO BE INSTALLED UP TO 8' AFF PRIOR TO INSTALLING MOP SINK.
7. PLANS DO NOT SHOW ALL VALVES. PROVIDE ISOLATION VALVES AT ALL FIXTURES AND VALVES FOR EACH WATER PIPE SUPPLYING A FIXTURE GROUP (E.G. TOILET ROOM, GROOMING AREA, ETC.) FOR EASE OF SERVICE AND MAINTENANCE. PROVIDE ISOLATION VALVE ON AQUARIUM GROUP, AND AT EACH SIDE OF VENDOR-SUPPLIED EQUIPMENT. DO NOT LOCATE ISOLATION VALVES ABOVE HARD CEILINGS.

KEYNOTES (SYMBOLS ①, ② ETC.)

1. FOREVER STAINLESS STEEL GROOMING TUB WITH FAUCET, STRAINER, VACUUM BREAKER FURNISHED BY PETCO VENDOR, INSTALLED BY CONTRACTOR. PROVIDE SUPPLY AND WASTE CONNECTIONS AS REQUIRED. CONTACT MARK ARNDT AT FOREVER STAINLESS STEEL (402) 935-0771 FOR ROUGH-IN INFORMATION. OBTAIN LATEST EQUIPMENT LITERATURE PRIOR TO ROUGH-IN.
2. FOREVER STAINLESS STEEL OVER-SIZE PET BATH WITH FAUCET, STRAINER AND WALKING RAMP, FURNISHED BY PETCO VENDOR, INSTALLED BY CONTRACTOR. RAMP ON OPPOSITE SIDE OF FAUCET. PROVIDE SUPPLY AND WASTE CONNECTIONS AS REQUIRED. CONTACT MARK ARNDT AT FOREVER STAINLESS STEEL (402) 935-0771 FOR ROUGH-IN INFORMATION. OBTAIN LATEST EQUIPMENT LITERATURE PRIOR TO ROUGH-IN.
3. STUB OUT 1/2" DCW AND DHW ON 8" CENTERS, 9-1/4" OUT FROM UNFINISHED WALL FRAME, FOR GROOMING TUB FAUCET 40" AFF.
4. DROP DCW, DHW, AND HWR PIPES DOWN TO 12" ABOVE CEILING. COORDINATE WITH ELECTRICAL AND MECHANICAL CONTRACTOR.
5. PROVIDE VACUUM BREAKERS AT HOT AND COLD WATER PIPING SERVING WASHING MACHINE BOX.
6. STACKED WASHER AND DRYER BY PETCO.
7. 1-1/4" GAS DROP TO GAS COCK AND FLEX CONNECTION TO WATER HEATER, AND 3/4" GAS DROP TO GAS COCK AND FLEX CONNECTION TO GAS DRYER.
8. RISE 3/4" FW THROUGH 1/4 TURN BALL VALVE TO CEILING SPACE.
9. WATER FILTER FURNISHED AND INSTALLED BY AQUARIUM RETAILER. PROVIDE STUB-OUTS FOR INLET AND OUTLET. SEE 14/P4.1.
10. 3/4" DCW AND DHW TO MIXING VALVE. PROVIDE ALL NECESSARY ACCESSORIES. SEE 14/P4.1.
11. DROP 1/2" DHW, 1/2" DCW AND 3/4" FW DOWN FROM BAR JOISTS TO BAGGING STATION. STUB OUT WALL AT 20" AFF AND WITH 6" IN BETWEEN EACH STUBOUT, CONNECT TO SINK FAUCET. STUBOUTS TO BE CENTERED ON FLOOR SINK. FOR 3/4" FW PROVIDE 1/4 TURN BALL VALVE AND 3/4" MALE ADAPTER. COORDINATE WITH ELECTRICAL CONTRACTOR FOR LOCATIONS OF PIPING VERSUS CONDUIT AND DEVICES.
12. DHW AND DCW, FW AND HWR PIPING AT BAR JOISTS.
13. ROUGH-IN FOR TOILET WATER SUPPLY MUST BE AT LEAST 8" AFF TO AVOID CONFLICT WITH COVE BASE.
14. HOSPITALITY SINK FURNISHED BY PETCO VENDOR, INSTALLED BY CONTRACTOR.



KEY PLAN 01
 REF.: NO SCALE



ACERTUS CONSULTING GROUP, LLC
 14817 West 95th Street ♦ Lenexa, Kansas 66215
 P 913 322 5150 ♦ F 913 322 5155
 www.AcertusGroup.com
 Registered Engineering Firm F-11902

petco
 PETCO ANIMAL SUPPLIES STORES, INC. 6834 WESLEY STREET GREENVILLE, TX 75402
 PETCO "GREENVILLE, TX"

DISTRIBUTION:	DATE:
25% SUBMISSION	06-28-11
75% SUBMISSION	08-11-11
98% SUBMISSION	08-16-11
100% SUBMISSION	09-23-11
PERMIT SET	09-28-11
FINAL PERMIT SET	09-20-13
BULLETIN #1	10-22-14

SBLM JOB #	PETCO PM JOB #
1120188	11458
DESIGNER	CHECKED
AJP/BE/JMM	BJT

DRAWING TITLE:
WATER LARGE SCALE PLANS AND DETAILS
P3.2