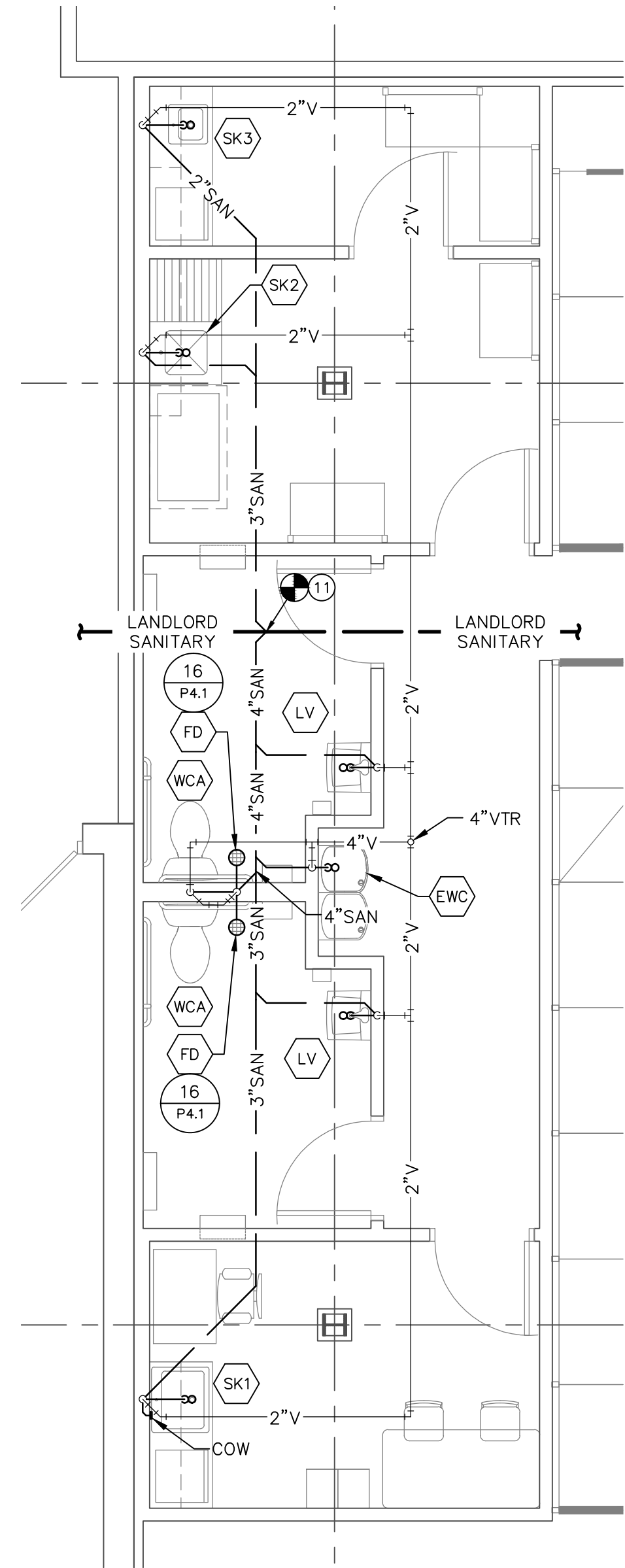
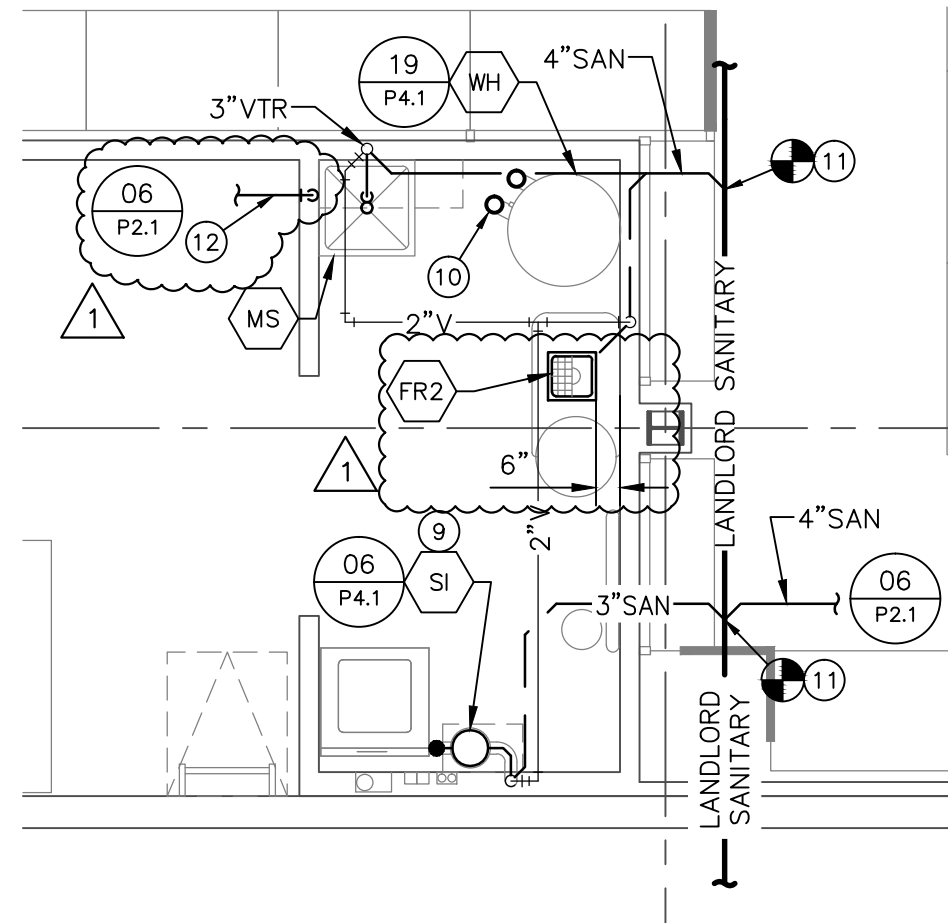


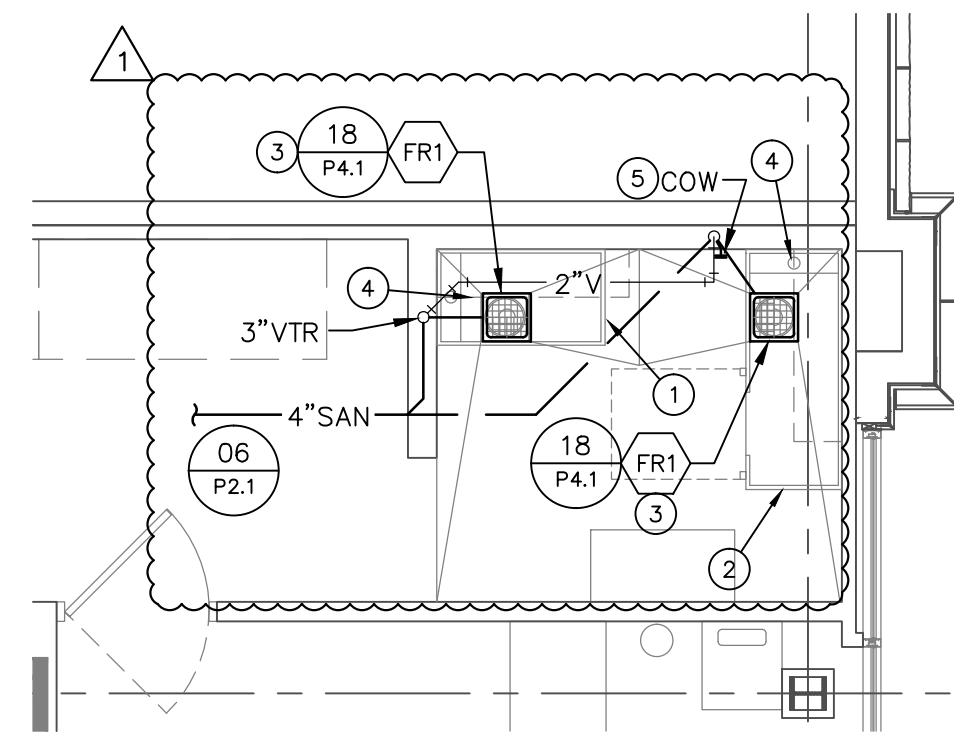
CONTRACTOR(S) SHALL VERIFY EXISTING CONDITIONS AND CORRELATE DIMENSIONS PRIOR TO PROVIDING THE WORK DETAILED IN THESE DRAWINGS. AND SHALL PROMPTLY NOTIFY THE ARCHITECT OF ANY DISCREPANCIES.
 © COPYRIGHT SBLM, ARCHITECTS PC. UNAUTHORIZED REPRODUCTION OR OTHER USE OF THIS DRAWING IS PROHIBITED.



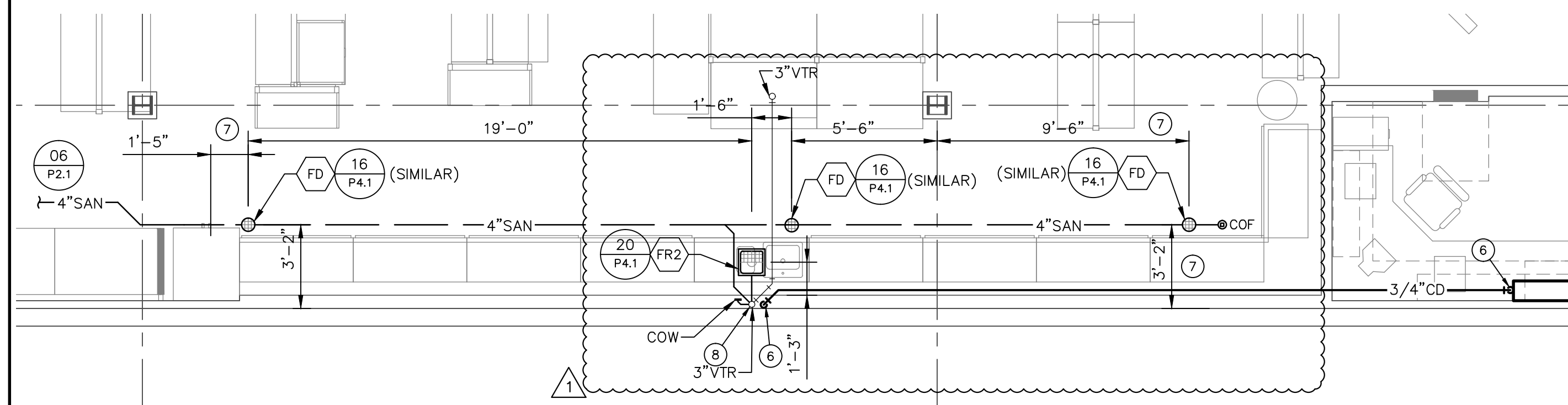
LARGE SCALE SUPPORT AREA PLAN 04
 REF.: 06/P2.1 1/4" = 1'-0"



LARGE SCALE JANITOR'S CLOSET PLAN 22
 REF.: 06/P2.1 1/4" = 1'-0"



LARGE SCALE GROOMING SALON PLAN 12
 REF.: 06/P2.1 1/4" = 1'-0"



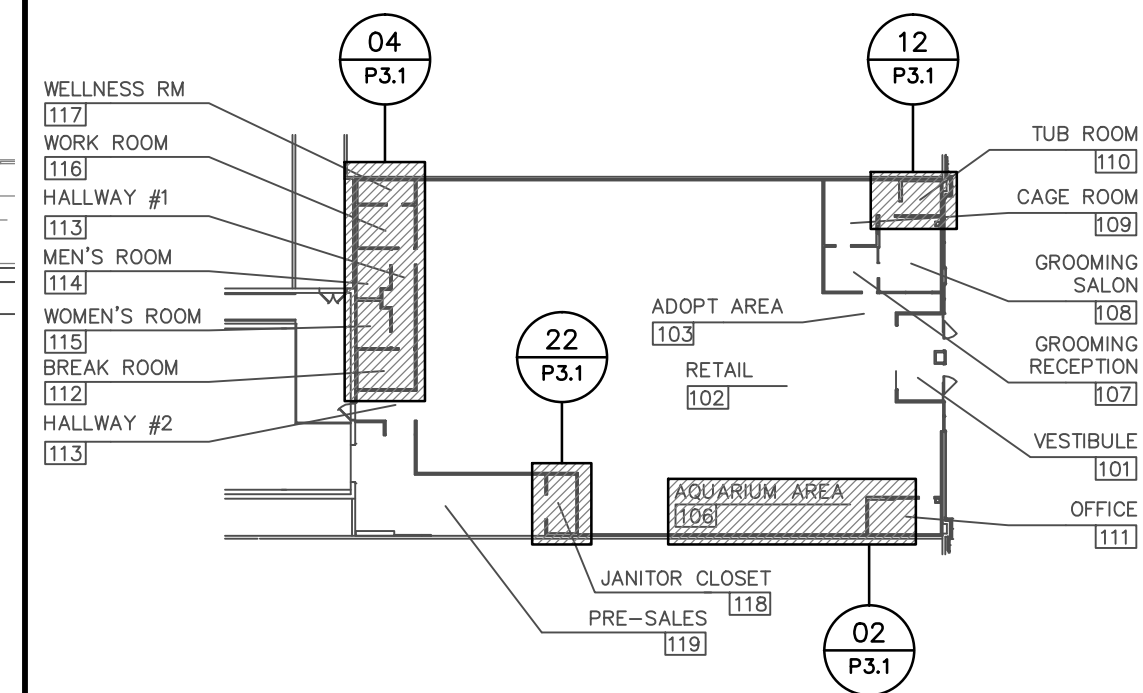
LARGE SCALE AQUARIUM AREA PLAN 02
 REF.: 06/P2.1 1/4" = 1'-0"

NOTES FOR THIS DRAWING

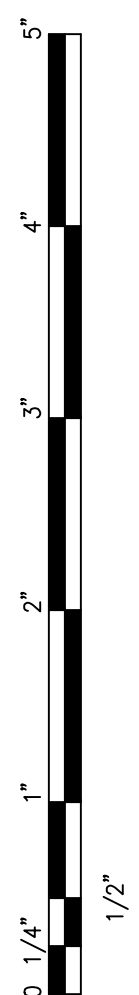
1. VERIFY ALL DIMENSIONS WITH THE PETCO VENDORS.
2. REFER TO ARCHITECTURAL DRAWINGS FOR TUB ROOM FLOOR RECEPTOR LOCATIONS AND TUB ROOM FLOOR SLOPE INFORMATION.
3. ALL DIMENSIONS ARE FROM THE INSIDE FACE OF UNFINISHED WALL.
4. ALL CONNECTIONS TO SANITARY LATERALS SHALL BE MADE USING WYE OR DOUBLE-WYE FITTINGS, NO TEE FITTINGS PERMITTED.
5. SHEET ROCK AND FRP BOARD ARE TO BE INSTALLED UP TO 8' AFF PRIOR TO INSTALLING MOP SINK.

KEYNOTES (SYMBOLS ①, ② ETC.)

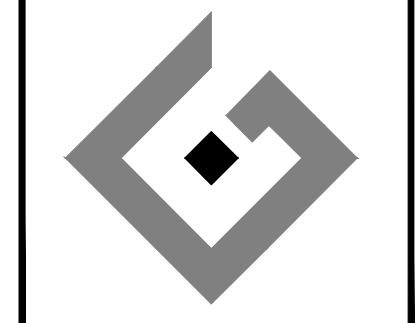
1. FOREVER STAINLESS STEEL GROOMING TUB WITH FAUCET, STRAINER, VACUUM BREAKER FURNISHED BY PETCO VENDOR, INSTALLED BY CONTRACTOR. CONTRACTOR SHALL PROVIDE SUPPLY AND WASTE CONNECTIONS AS REQUIRED. CONTACT MARK ARNDT AT FOREVER STAINLESS STEEL (402) 935-0771 FOR ROUGH-IN INFORMATION. OBTAIN LATEST EQUIPMENT LITERATURE PRIOR TO ROUGH-IN.
2. FOREVER STAINLESS STEEL OVER-SIZE PET BATH WITH FAUCET, VACUUM BREAKER AND WALKING RAMP, FURNISHED BY PETCO VENDOR, INSTALLED BY CONTRACTOR. RAMP ON OPPOSITE SIDE OF FAUCET. CONTRACTOR SHALL PROVIDE SUPPLY AND WASTE CONNECTIONS AS REQUIRED. CONTACT MARK ARNDT AT FOREVER STAINLESS STEEL (402) 935-0771 FOR ROUGH-IN INFORMATION. OBTAIN LATEST EQUIPMENT LITERATURE PRIOR TO ROUGH-IN.
3. THE FLOOR IN THE TUB ROOM IS SLOPED. REFER TO ARCHITECTURAL PLANS AND COORDINATE WITH GENERAL CONTRACTOR PRIOR TO INSTALLATION OF FLOOR RECEPTOR IN THIS AREA. ALSO REFER TO PLUMBING FIXTURE SCHEDULE.
4. EXTEND COPPER TAILPIECE OUT OF TUB OUTLET DOWN WITH AIR GAP (MAINTAINING CLEARANCE FOR HINGING FLOOR DRAIN GRATE FOR REMOVAL AND REPLACEMENT OF SEDIMENT BUCKET). SEE 18/P4.1.
5. A WALL CLEAN-OUT AT 10' AFF IS TO BE PROVIDED IN THE TUB ROOM. UNDER NO CIRCUMSTANCES IS IT PERMISSIBLE TO USE A FLOOR CLEAN OUT. LOCATE CLEAR OF TUB LEGS.
6. PROVIDE 3/4" CONDENSATE DRAIN LINE FROM OFFICE AHU CONDENSATE PUMP ABOVE CEILING CONCEALED AS HIGH AS POSSIBLE WITHIN STRUCTURE OVER TO FLOOR RECEPTOR. ROUTE PIPING CONCEALED DOWN WITHIN WALL, TURN PIPING OUT OF WALL MINIMUM 8" AFF AND TERMINATE OVER FLOOR SINK WITH AIR GAP PER CODE.
7. DIMENSIONS SHOWN ARE TO CENTERLINE OF DRAIN OF FLOOR RECEPTOR/DRAIN. VERIFY WITH LATEST ARCHITECTURAL FIXTURE PLAN PRIOR TO INSTALLATION.
8. COORDINATE WITH ELECTRICAL CONTRACTOR FOR LOCATIONS OF PIPING VERSUS CONDUIT AND DEVICES.
9. MOUNT SOLIDS INTERCEPTOR ON FLOOR ACCORDING TO MANUFACTURER'S INSTRUCTIONS.
10. 3" PVC FLUE VENT AND 3" PVC COMBUSTION AIR INTAKE FROM WATER HEATER THROUGH ROOF. ADD OFFSET AS REQUIRED FOR STRUCTURE, ROOF HATCH, OUTSIDE AIR INTAKES, OR PLATFORM, ETC. TERMINATE WITH MANUFACTURER'S CONCENTRIC VENT KIT A MINIMUM OF 10'-0" FROM ROOF HATCH OPENING AND FRESH AIR INTAKES.
11. PROVIDE SANITARY CONNECTION TO LANDLORD SANITARY SEWER SYSTEM. CONFIRM LOCATION OF CONNECTION IN FIELD. DEVIATIONS FROM GRAPHICALLY SHOWN LOCATIONS ARE PERMITTED IF A) NO ADDITIONAL COST TO THE OWNER AND B) THEY ARE VERIFIED WITH AND APPROVED BY THE PETCO PROJECT MANAGER.
12. INSTALL 1/2" DRAIN LINE FROM ROOF HYDRANT DOWN IN WALL, TURN PIPING OUT OF WALL AND RUN TO APPROVED DRAIN RECEPTOR WITH AIR GAP PER CODE.



KEY PLAN 01
 REF.: NO SCALE



ACERTUS CONSULTING GROUP, LLC
 14817 West 95th Street ♦ Lenexa, Kansas 66215
 P 913 322 5150 ♦ F 913 322 5155
 www.AcertusGroup.com
 Registered Engineering Firm
 F-11902



petco.
PETCO ANIMAL SUPPLIES STORES, INC. PETCO "GREENVILLE, TX"
 6834 WESLEY STREET GREENVILLE, TX 75402
 SAN ANTONIO, TEXAS 78248

DISTRIBUTION:	DATE:
25% SUBMISSION	06-28-11
75% SUBMISSION	08-11-11
98% SUBMISSION	08-16-11
100% SUBMISSION	09-23-11
PERMIT SET	09-28-11
FINAL PERMIT SET	09-20-13
BULLETIN #1	10-22-14

DRAWING TITLE:
SANITARY LARGE SCALE PLANS AND DETAILS
P3.1