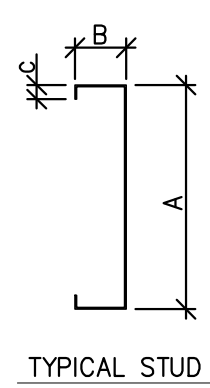
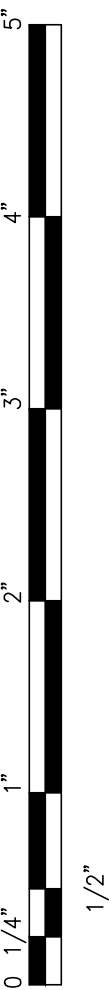


CONTRACTOR(S) SHALL VERIFY EXISTING CONDITIONS AND CORRELATE DIMENSIONS PRIOR TO PROVIDING THE WORK DETAILED IN THESE DRAWINGS. AND SHALL PROMPTLY NOTIFY THE ARCHITECT OF ANY DISCREPANCIES.  
 COPYRIGHT SBLM ARCHITECTS PC. UNAUTHORIZED REPRODUCTION OR OTHER USE OF THIS DRAWING IS PROHIBITED.

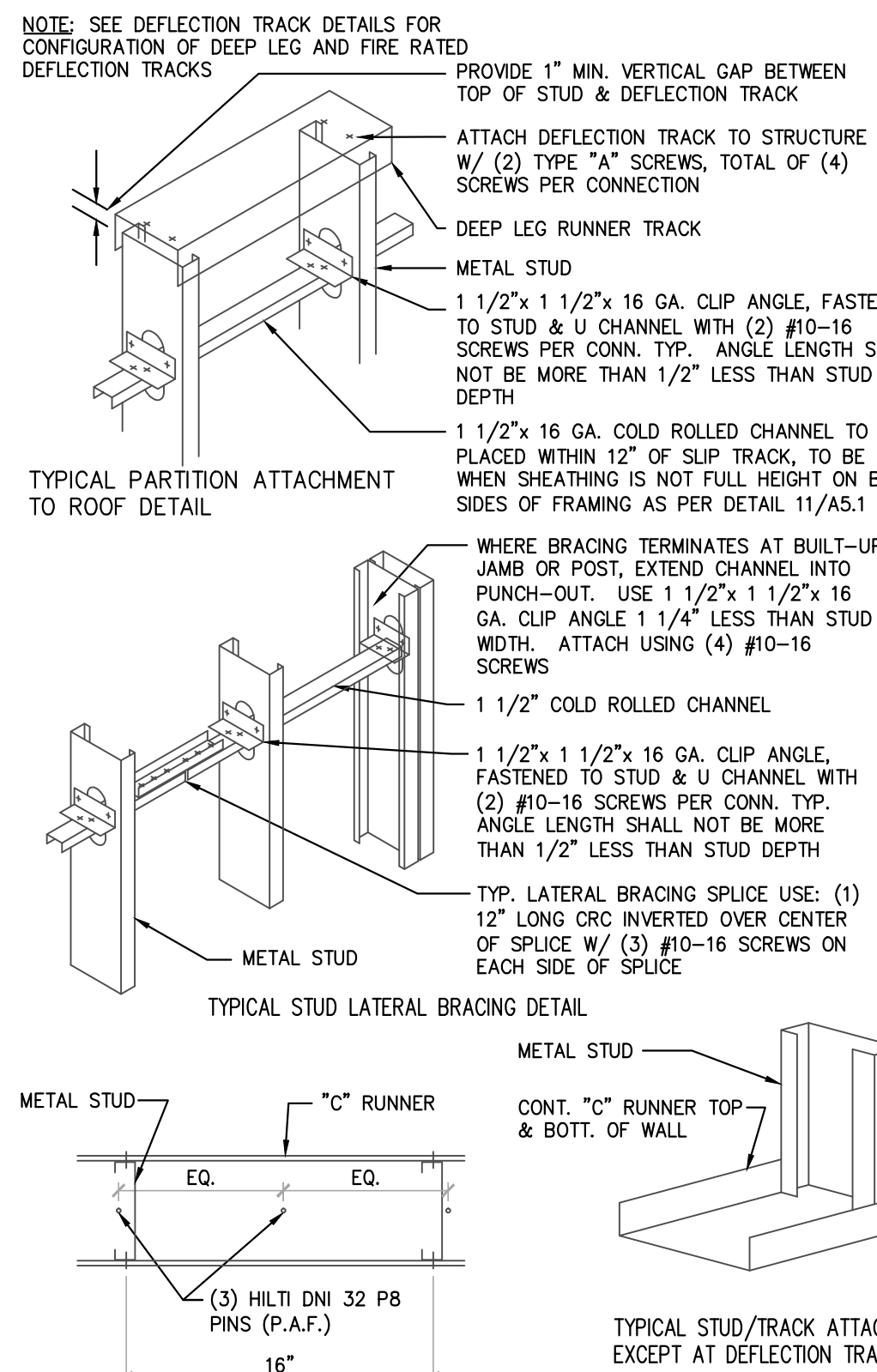


LIGHT STEEL HEADER FRAMING PROPERTIES								
TYPE	A (IN)	B (IN)	C (IN)	THICKNESS	AREA (IN <sup>2</sup> )	S <sub>x</sub> (IN <sup>3</sup> )	I <sub>x</sub> (IN <sup>4</sup> )	MAX. LENGTH
8" HEADER STUD	8	2	5/8"	0.0713 (14 GAUGE)	0.907	1.964	8.14	20'-0"
6" HEADER STUD	6	1-3/8"	3/8"	0.0566 (16 GAUGE)	0.514	0.809	2.518	14'-0"

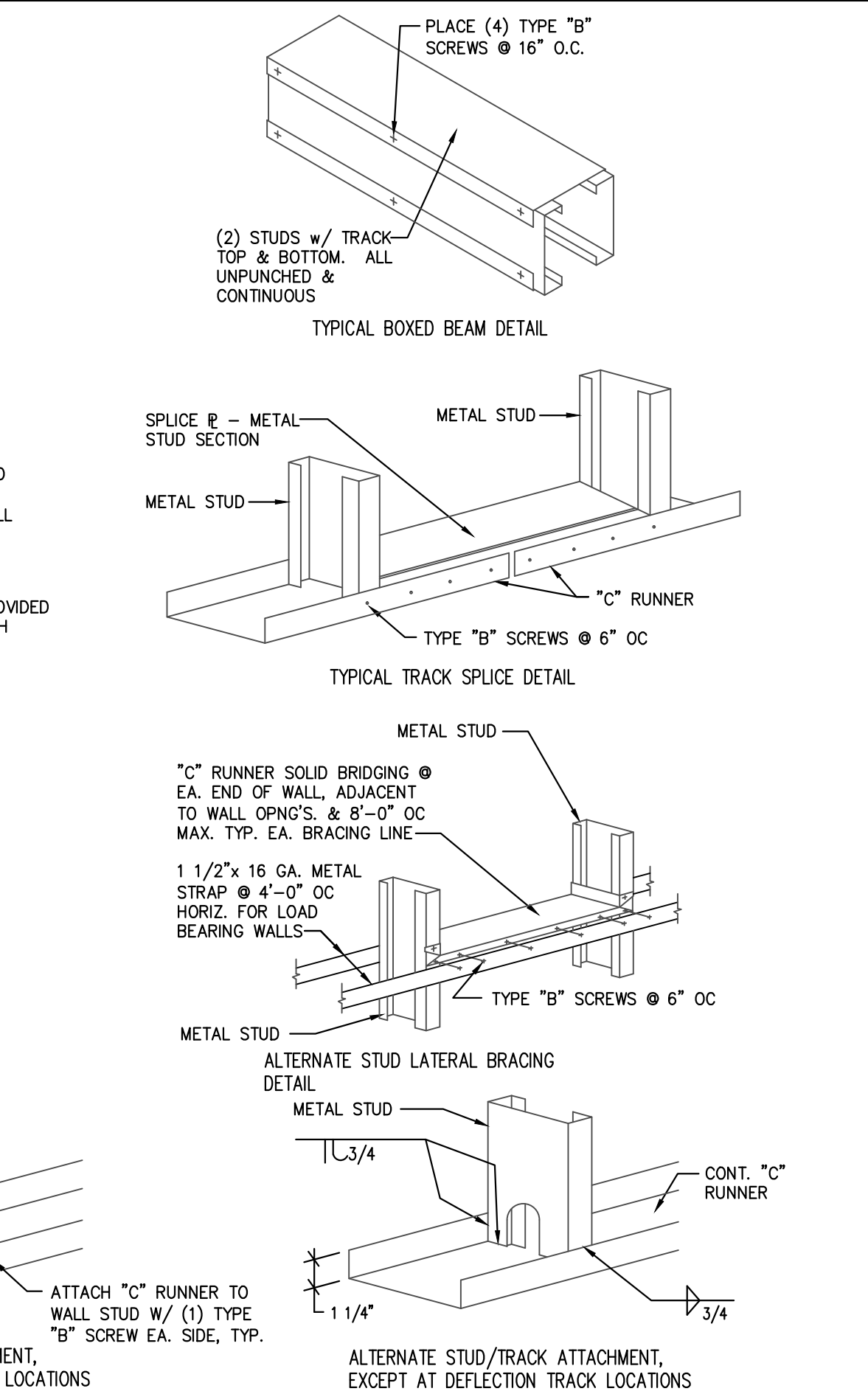
- NOTES:**
- ALL PROPERTIES SHOWN ABOVE ARE MINIMUM.
  - STUD AND JOIST DESIGNATIONS ARE PER STEEL STUD MANUFACTURERS ASSOCIATION (SSMA). ER-4943P
- STEEL STUD AND JOIST NOTES**
- ALL STUDS, TRACKS AND JOISTS SHALL BE FORMED FROM STANDARD COMMERCIAL STEEL ASTM A570, WITH A MINIMUM YIELD POINT OF 33,000 PSI FOR MATERIAL 18 GAUGE AND THINNER AND 50,000 PSI FOR MATERIAL 16 GAUGE AND THICKER.
  - ALL FRAMING COMPONENTS SHALL BE CUT SQUARELY OR ON AN ANGLE (SUCH AS BRACING) TO SQUARELY FIT AGAINST ABUTTING MEMBERS. MEMBERS SHALL BE HELD FIRMLY IN POSITION UNTIL PROPERLY FASTENED.
  - STUDS, TRACKS AND JOISTS SHALL BE ATTACHED BY WELDING AND/OR SELF DRILLING SCREWS AS NOTED IN THE DETAILS.
  - STEEL STUDS AND JOISTS SHALL BE AS MANUFACTURED BY MEMBER OF SSMA OR EQUIVALENT PRODUCT SUBSTITUTED PER SPECIFICATIONS. MINIMUM STUD AND JOIST PROPERTIES SHALL BE AS LISTED ABOVE. MAXIMUM STUD SPACING IS 16" O.C. AND MAXIMUM JOIST SPACING 24" O.C., UNLESS OTHERWISE NOTED.
  - RUNNER TRACKS SHALL BE THE SAME GAUGE AS STUDS SUPPORTED, UNLESS OTHERWISE NOTED. TRACKS SHALL BE FASTENED TO STRUCTURE AT 24" O.C. MAXIMUM UNLESS OTHERWISE NOTED.
  - PROVIDE BLOCKING OF WALL STUDS AT 3'-6" O.C. MAXIMUM WHERE FINISHES DO NOT OCCUR ON BOTH SIDES OF WALL, SEE STUD BLOCKING DETAIL.
  - WHERE NECESSARY, STEEL STUDS SHALL BE COORDINATED WITH GLAZING MANUFACTURER, MECHANICAL, ELECTRICAL AND ALL OTHER TRADES.

**INTERIOR METAL FRAMING NOTES** 13  
 REF.: A7.1 SOURCE: N.T.S.

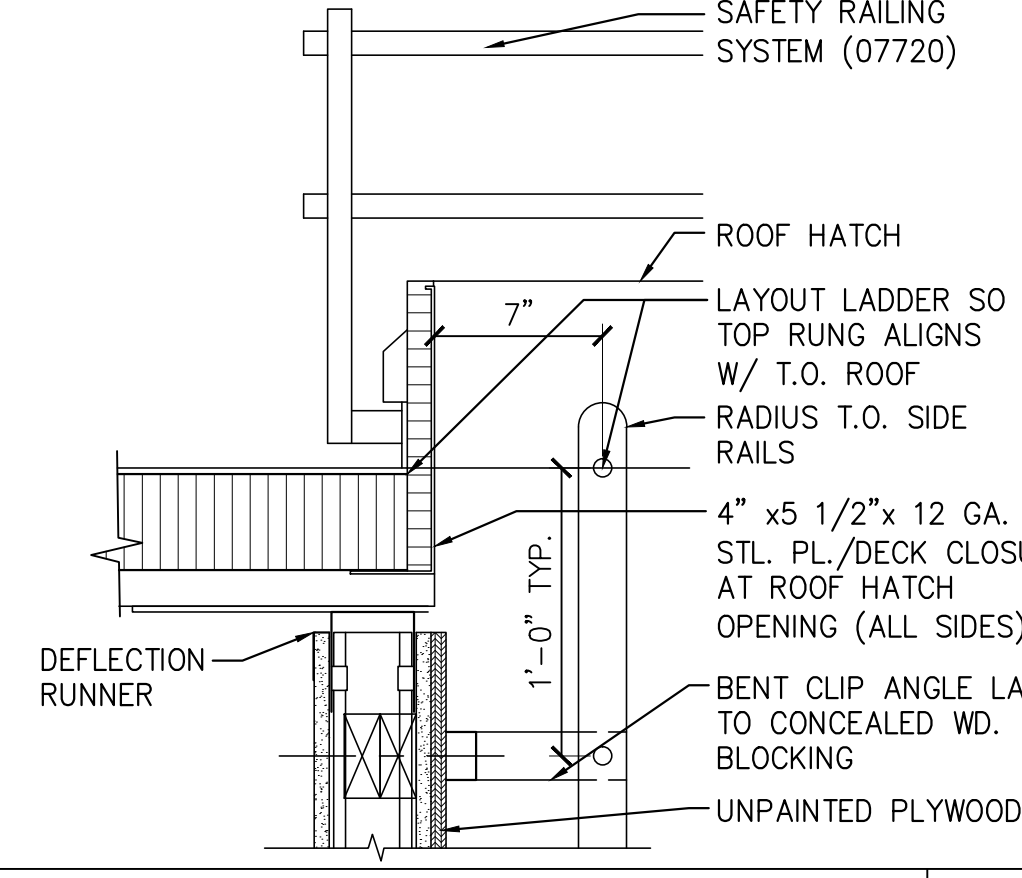
METAL STUD ATTACHMENT SCHEDULE	METAL SCREW SCHEDULE
1. ALL 6" TO 8" METAL STUDS USE (5) TYPE "B" SCREWS.	SCREW TYPE "A" = 12-24x1 1/4" HHW TEK S/5
2. ALL 6" TO 3 5/8" METAL STUDS USE (4) TYPE "B" SCREWS.	SCREW TYPE "B" = 10-16x3/4" HHW TEK S/1
3. ALL 3 5/8" TO 3 5/8" METAL STUDS USE (4) TYPE "B" SCREWS.	SCREW TYPE "C" = 12-14x3/4" HHW TEK S/1
4. SEE SCHEDULE FOR SCREW SIZES.	ALL SCREWS BY BUILDING FASTENERS INC. OR EQUAL.



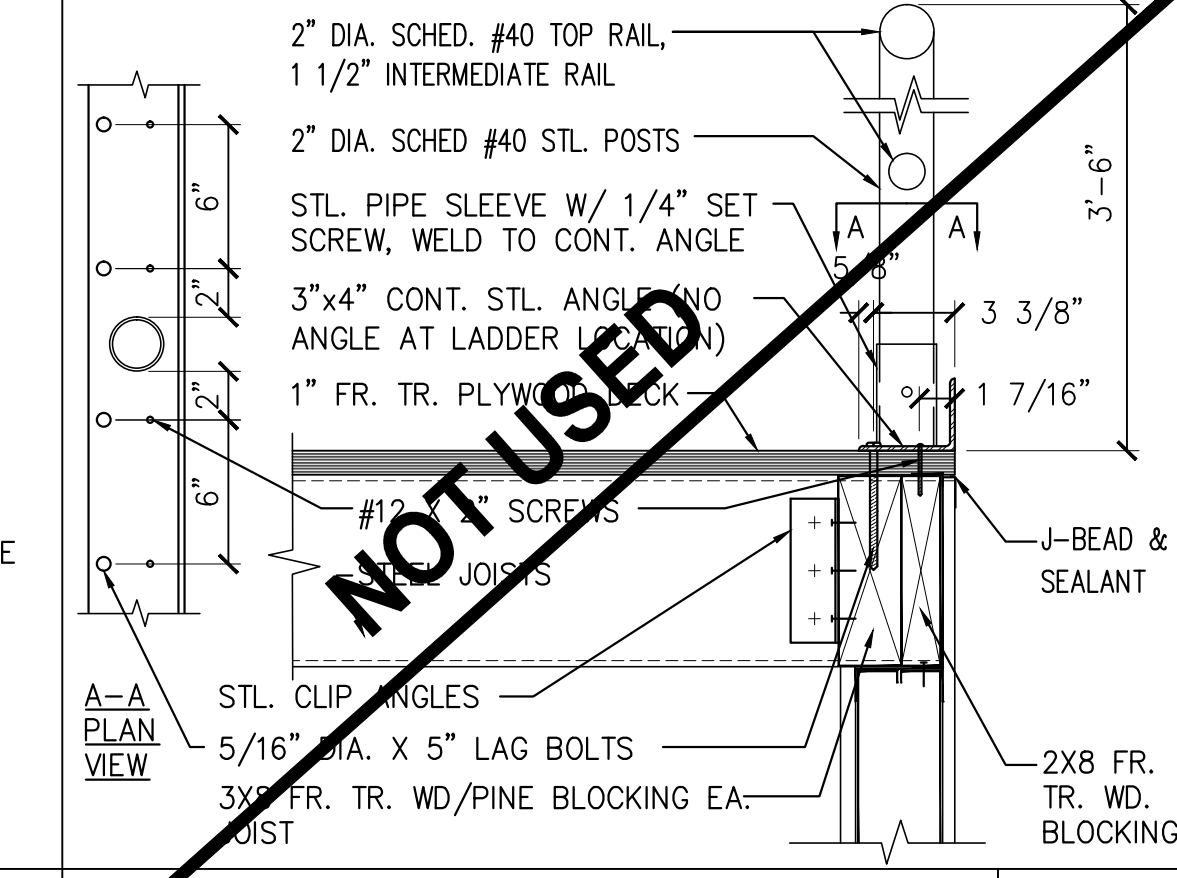
**INTERIOR METAL FRAMING DETAILS** 11  
 REF.: SOURCE: N.T.S.



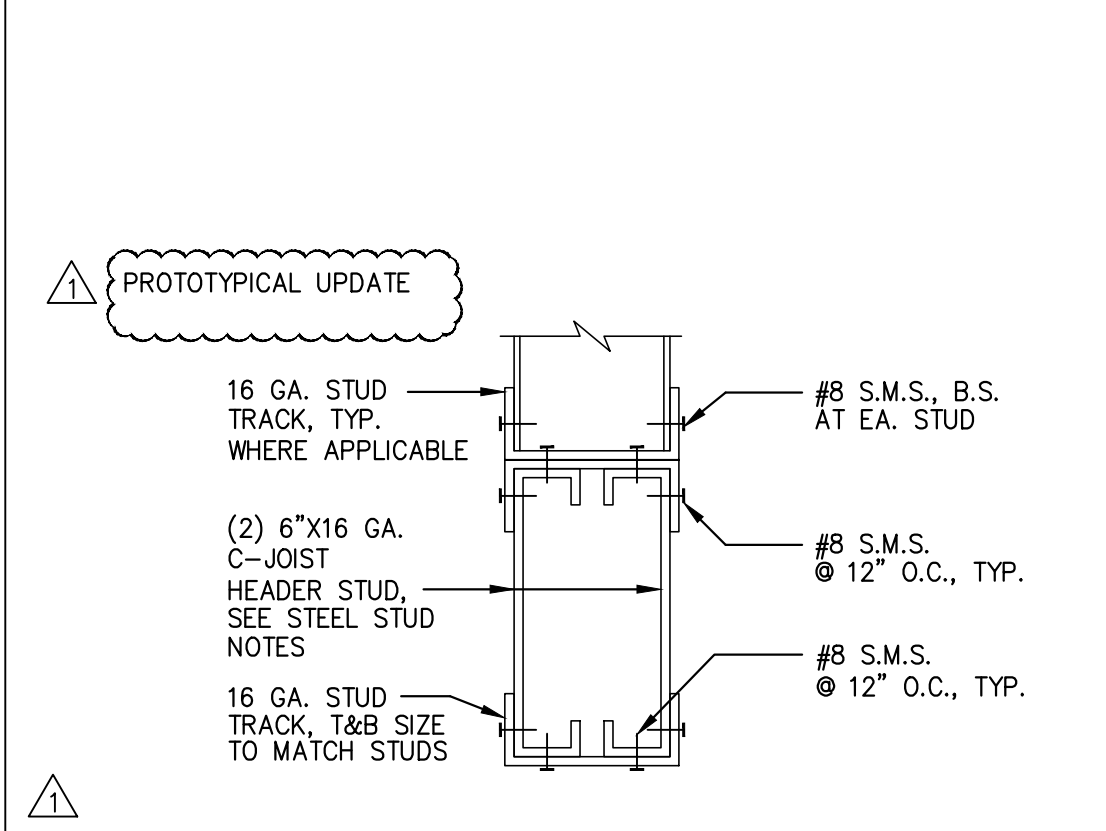
**INTERIOR METAL FRAMING DETAILS** 11  
 REF.: SOURCE: N.T.S.



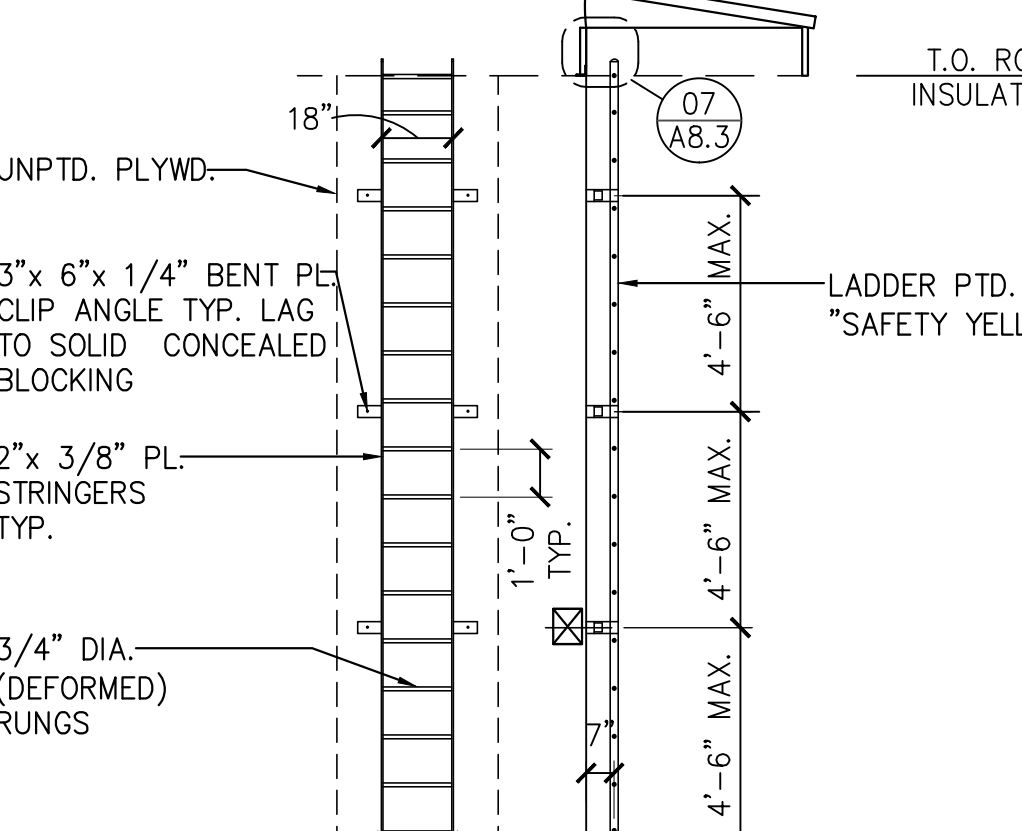
**ROOF HATCH DETAIL** 07  
 REF.: A2.5, A0.2 SOURCE: 1-1/2"=1'-0"



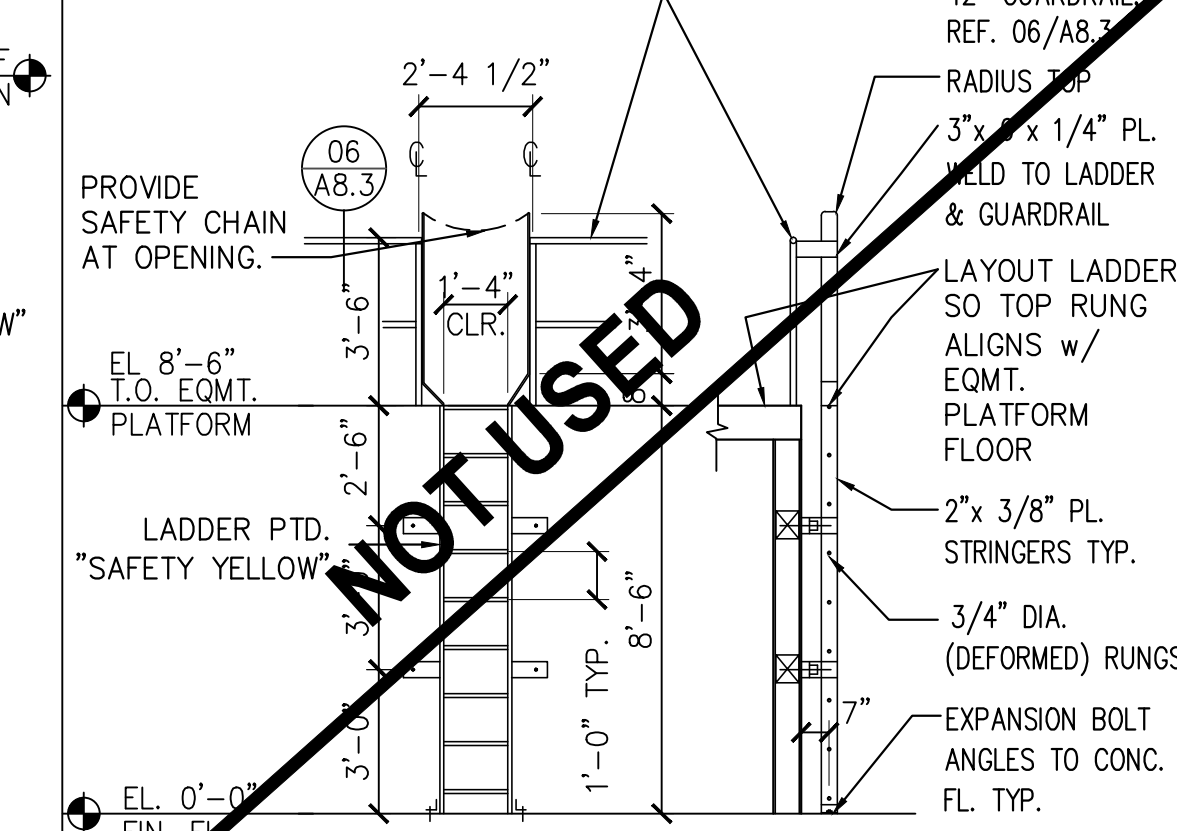
**PLATFORM GUARDRAIL** 06  
 REF.: 4/A5.3 SOURCE: 1-1/2"=1'-0"



**TYP. INTERIOR HEADER SECTION DETAIL** 03  
 REF.: A7.1 SOURCE: N.T.S.



**ROOF HATCH LADDER DETAIL** 02  
 REF.: A2.1 SOURCE: 1/4"=1'-0"



**EQMT. PLATFORM LADDER DETAIL** 01  
 REF.: 4/A5.3 SOURCE: 1/4"=1'-0"

**SBLM Architects #A0009343**  
 11400 N. Kendall Drive, Suite 310  
 Miami, FL 33176  
 Telephone 305-412-9187  
 Fax 305-412-6731  
 www.sblm.com

**SBLM**

James Cohen  
 Lic. #22580

**petco**

PETCO ANIMAL SUPPLIES STORES, INC.  
 6834 WESLEY STREET  
 GREENVILLE, TX

DISTRIBUTION:	DATE:
75% SUBMISSION	08-11-11
98% SUBMISSION	08-16-11
100% SUBMISSION	09-23-11
PERMIT SET	09-28-11
FINAL PERMIT SET	09-20-13
BULLETIN 1	10-22-14

**INTERIOR DETAILS**

**A8.3**