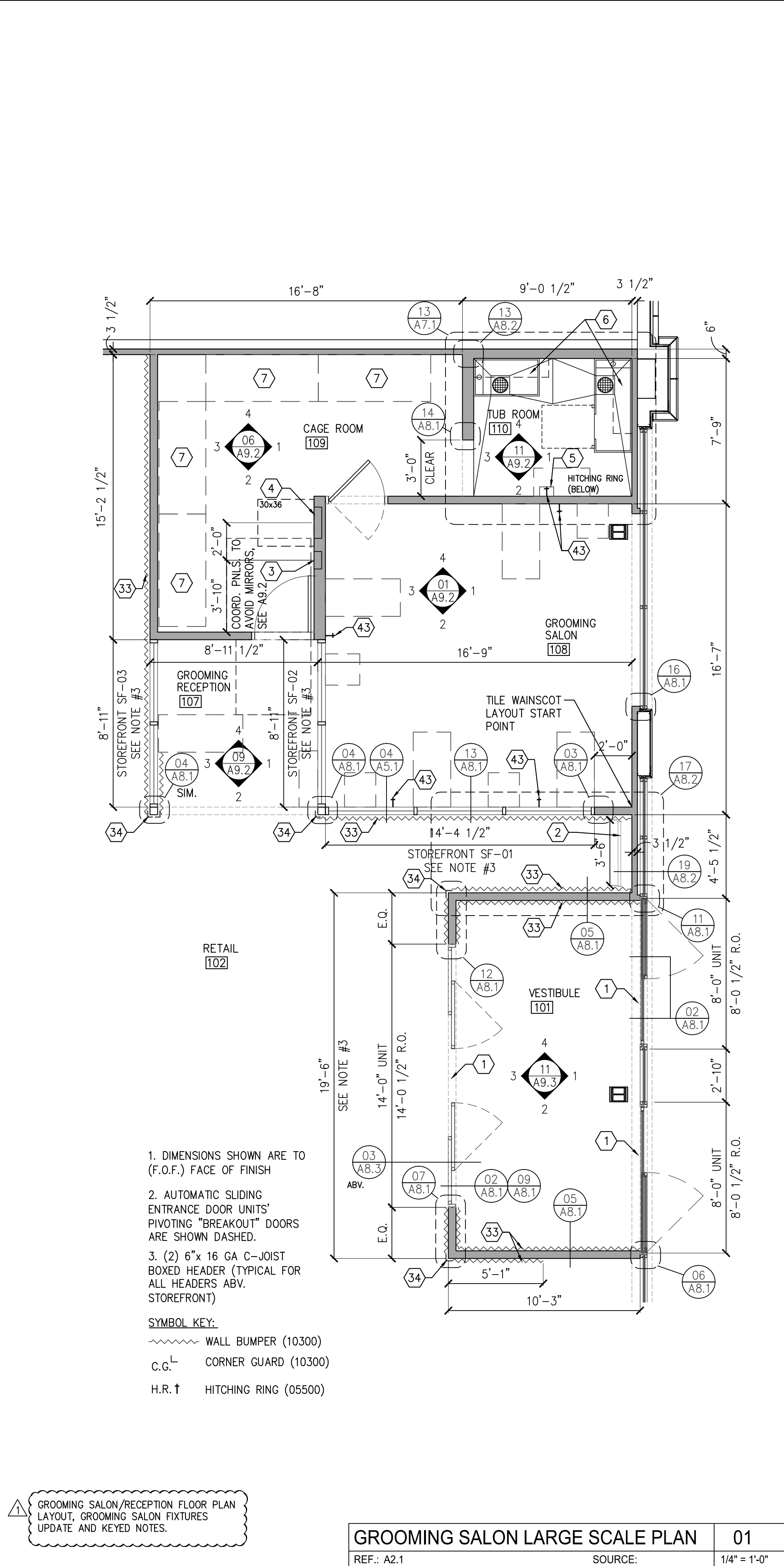
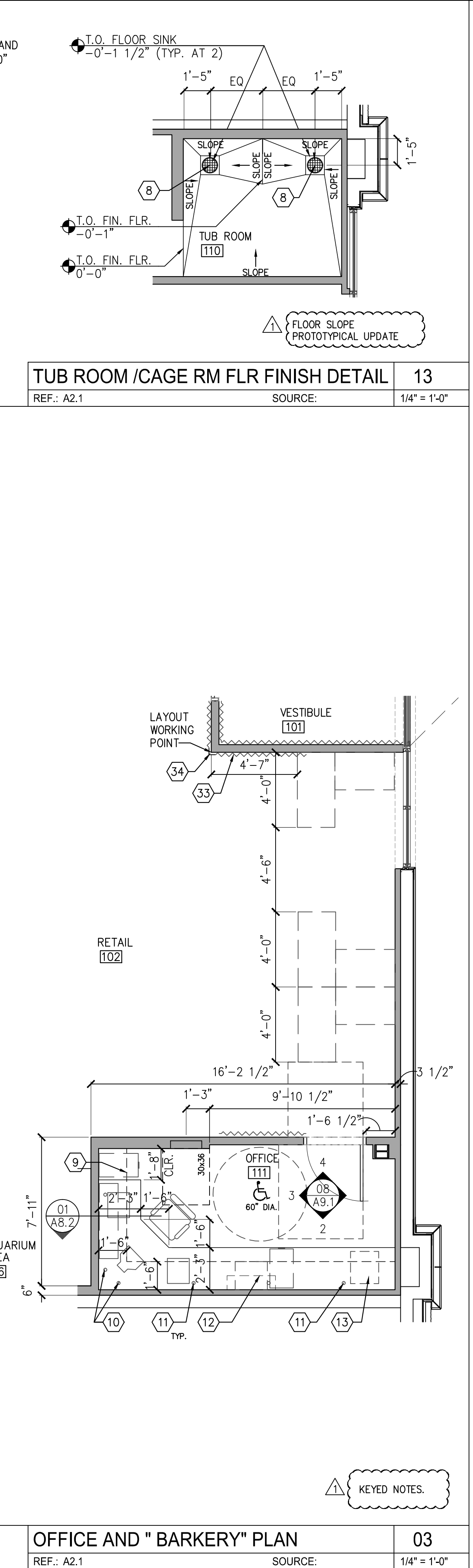
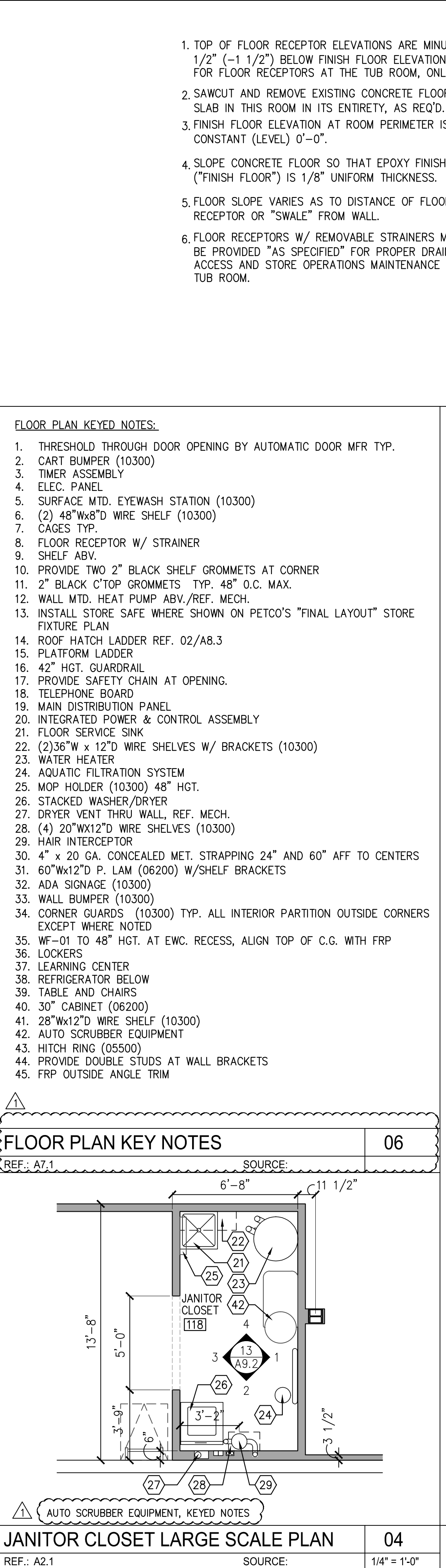
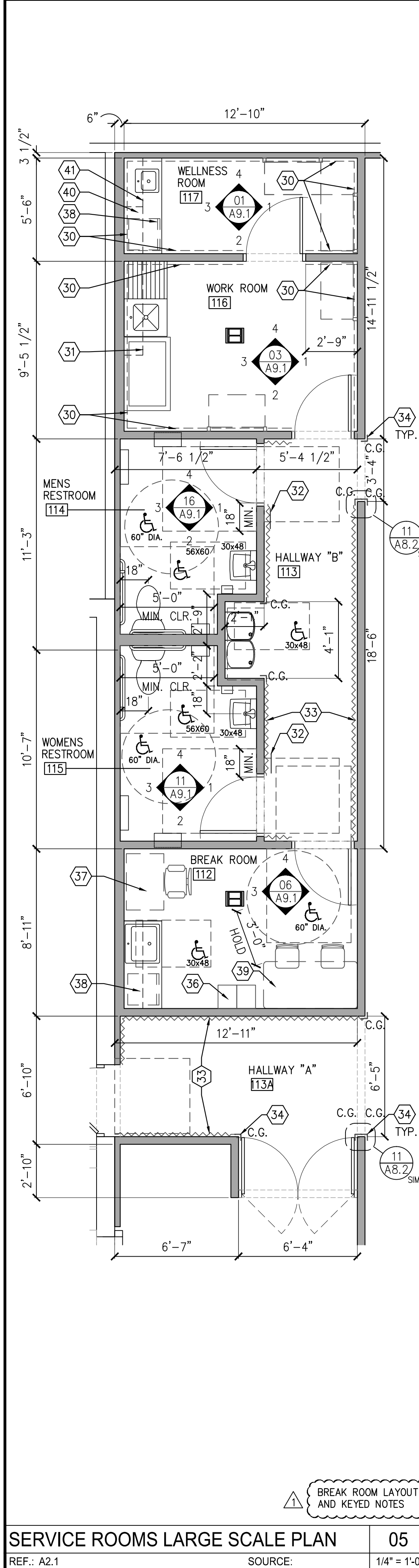
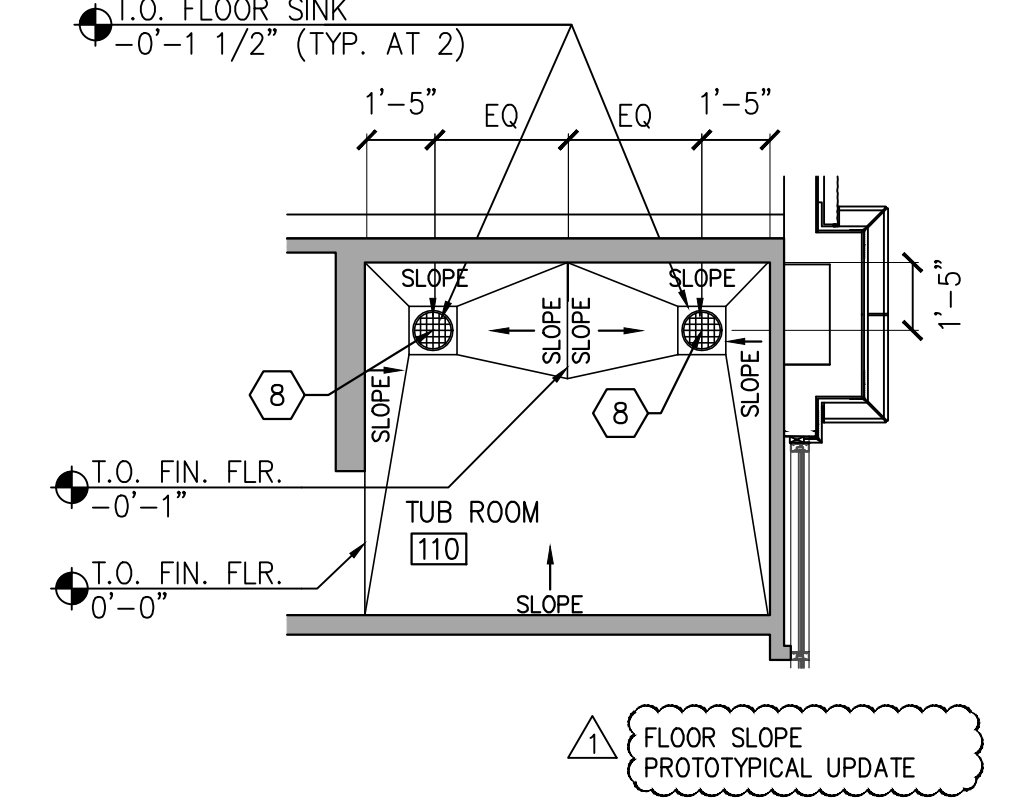


CONTRACTOR(S) SHALL VERIFY EXISTING CONDITIONS AND CORRELATE DIMENSIONS PRIOR TO PROVIDING THE WORK DETAILED IN THESE DRAWINGS. AND SHALL PROMPTLY NOTIFY THE ARCHITECT OF ANY DISCREPANCIES.
 COPYRIGHT SBLM ARCHITECTS PC. UNAUTHORIZED REPRODUCTION OR OTHER USE OF THIS DRAWING IS PROHIBITED.

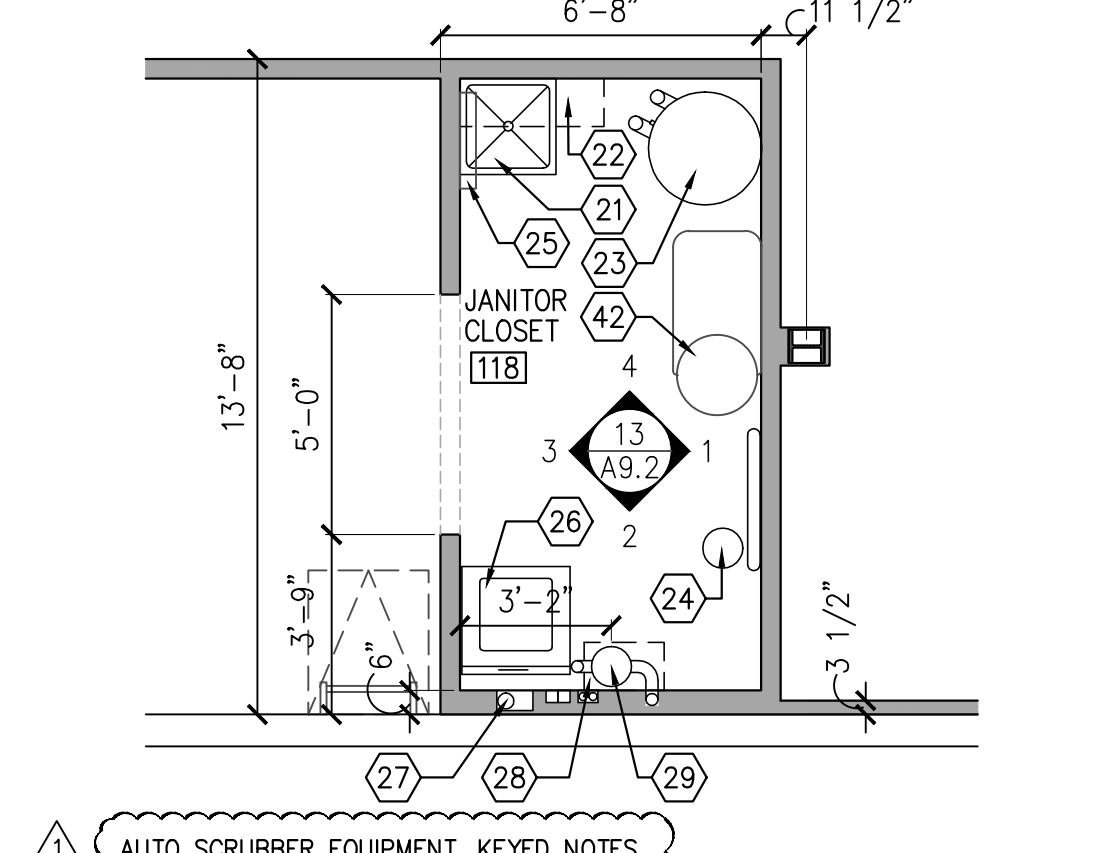


- TOP OF FLOOR RECEPTOR ELEVATIONS ARE MINUS 1 AND 1/2" (-1 1/2") BELOW FINISH FLOOR ELEVATION 0'-0" FOR FLOOR RECEPTORS AT THE TUB ROOM, ONLY.
- SAWCUT AND REMOVE EXISTING CONCRETE FLOOR SLAB IN THIS ROOM IN ITS ENTIRETY, AS REQ'D.
- FINISH FLOOR ELEVATION AT ROOM PERIMETER IS CONSTANT (LEVEL) 0'-0".
- SLOPE CONCRETE FLOOR SO THAT EPOXY FINISH ("FINISH FLOOR") IS 1/8" UNIFORM THICKNESS.
- FLOOR SLOPE VARIES AS TO DISTANCE OF FLOOR RECEPTOR OR "SWALE" FROM WALL.
- FLOOR RECEPTORS W/ REMOVABLE STRAINERS MUST BE PROVIDED "AS SPECIFIED" FOR PROPER DRAIN ACCESS AND STORE OPERATIONS MAINTENANCE AT TUB ROOM.

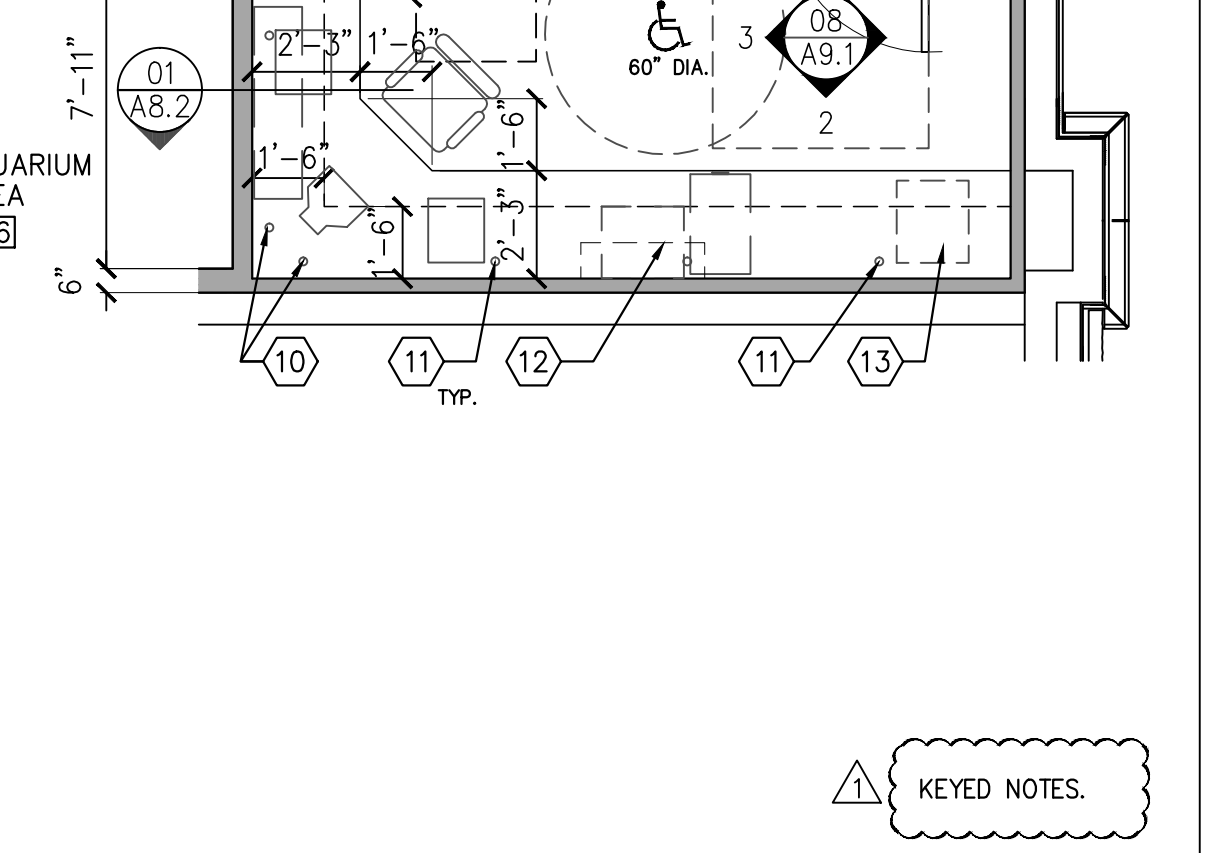


- FLOOR PLAN KEYED NOTES:
- THRESHOLD THROUGH DOOR OPENING BY AUTOMATIC DOOR MFR TYP.
 - CART BUMPER (10300)
 - TIMER ASSEMBLY
 - ELEC. PANEL
 - SURFACE MTD. EYEWASH STATION (10300)
 - (2) 48"Wx8"D WIRE SHELF (10300)
 - CAGES TYP.
 - FLOOR RECEPTOR W/ STRAINER
 - SHelf ABV.
 - PROVIDE TWO 2" BLACK SHelf GROMMETS AT CORNER
 - 2" BLACK C'TOP GROMMETS TYP. 48" O.C. MAX.
 - WALL MTD. HEAT PUMP ABV./REF. MECH.
 - INSTALL STORE SAFE WHERE SHOWN ON PETCO'S "FINAL LAYOUT" STORE FIXTURE PLAN
 - ROOF HATCH LADDER REF. 02/AB.3
 - PLATFORM LADDER
 - 42" HGT. GUARDRAIL
 - PROVIDE SAFETY CHAIN AT OPENING.
 - TELEPHONE BOARD
 - MAIN DISTRIBUTION PANEL
 - INTEGRATED POWER & CONTROL ASSEMBLY
 - FLOOR SERVICE SINK
 - (2) 36"W x 12"D WIRE SHELVES W/ BRACKETS (10300)
 - WATER HEATER
 - AQUATIC FILTRATION SYSTEM
 - MOP HOLDER (10300) 48" HGT.
 - STACKED WASHER/DRYER
 - DRYER VENT THRU WALL, REF. MECH.
 - (4) 20"Wx12"D WIRE SHELVES (10300)
 - HAIR INTERCEPTOR
 - 4" x 20 GA. CONCEALED MET. STRAPPING 24" AND 60" AFF TO CENTERS
 - 60"Wx12"D P. LAM (06200) W/SHELF BRACKETS
 - ADA SIGNAGE (10300)
 - WALL BUMPER (10300)
 - CORNER GUARDS (10300) TYP. ALL INTERIOR PARTITION OUTSIDE CORNERS EXCEPT WHERE NOTED
 - WF-01 TO 48" HGT. AT EWC. RECESS, ALIGN TOP OF C.G. WITH FRP
 - LOCKERS
 - LEARNING CENTER
 - REFRIGERATOR BELOW
 - TABLE AND CHAIRS
 - 30" CABINET (06200)
 - 28"Wx12"D WIRE SHELF (10300)
 - AUTO SCRUBBER EQUIPMENT
 - HITCH RING (05500)
 - PROVIDE DOUBLE STUDS AT WALL BRACKETS
 - FRP OUTSIDE ANGLE TRIM

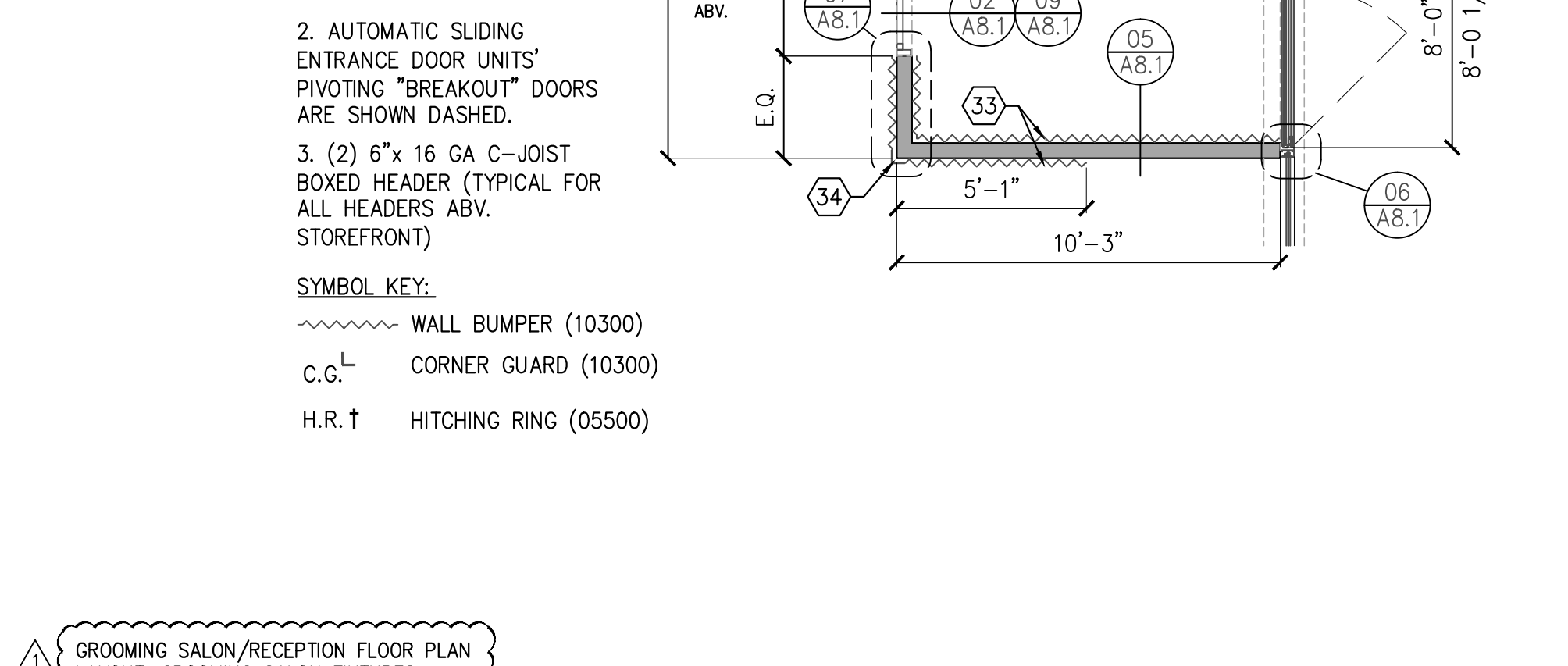
FLOOR PLAN KEY NOTES 06
 REF.: A7.1 SOURCE: 1/4" = 1'-0"



OFFICE AND "BARKERY" PLAN 03
 REF.: A2.1 SOURCE: 1/4" = 1'-0"



GROOMING SALON LARGE SCALE PLAN 01
 REF.: A2.1 SOURCE: 1/4" = 1'-0"



SBLM Architects #A0009434
 11400 N. Kendall Drive, Suite 310
 Miami, FL 33176
 Telephone 305-412-9187
 Fax 305-412-6731
 www.sblm.com

SBLM

James Cohen
 Lic. #22580

petco

PETCO ANIMAL SUPPLIES STORES, INC. 6834 WESLEY STREET GREENVILLE, TX

DISTRIBUTION:	DATE:
75% SUBMISSION	08-11-11
98% SUBMISSION	08-16-11
100% SUBMISSION	09-23-11
PERMIT SET	09-28-11
FINAL PERMIT SET	09-20-13
BULLETIN 1	10-22-14

SBLM JOB#	PETCO P.M. JOB#
11107	11458
DRAWN:	CHECKED:
IT	MS

DRAWING TITLE:
 LARGE SCALE PLANS

A7.1