

CONTRACTOR(S) SHALL VERIFY EXISTING CONDITIONS AND CORRELATE DIMENSIONS PRIOR TO PROVIDING THE WORK DETAILED IN THESE DRAWINGS. AND SHALL PROMPTLY NOTIFY THE ARCHITECT OF ANY DISCREPANCIES.
 © COPYRIGHT SBLM ARCHITECTS PC. UNAUTHORIZED REPRODUCTION OR OTHER USE OF THIS DRAWING IS PROHIBITED.

- FLOOR PLAN KEYED NOTES:**
- 1 PROVIDE 42" HGT. STAINLESS STEEL COLUMN COVERS (10300) FOR ALL FREESTANDING COLUMNS IN RETAIL AREA, GROOMING SALON, VESTIBULE, WORK ROOM, AND BREAK ROOM, TYP. REF. DET. 12/A8.2
 - 2 PARKING LOT CART CORRAL (10300) COORDINATE FINAL LOCATIONS W/ PETCO PROJECT MANAGER.
 - 3 CUSTOMER ACCESSIBLE CURB RAMP, COORDINATE FINAL LOCATIONS W/ PETCO PROJECT MANAGER.
 - 4 DUMPSTER ENCLOSURE, COORDINATE FINAL LOCATIONS W/ PETCO PROJECT MANAGER.
 - 5 NOT USED
 - 6 4"x 20 GA CONCEALED GALVANIZED METAL STRAPPING AT 6'-6" HGT. A.F.F. TO CENTERS
 - 7 NOT USED
 - 8 PREFABRICATED "PET CLEAN UP STATION" (10300), TO BE LOCATED IN A PARKING ISLAND NEAR STORE ENTRY, OTHERWISE COORDINATE LOCATION WITH PETCO PROJECT MANAGER

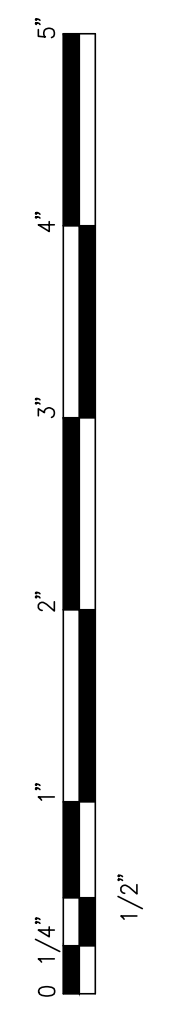
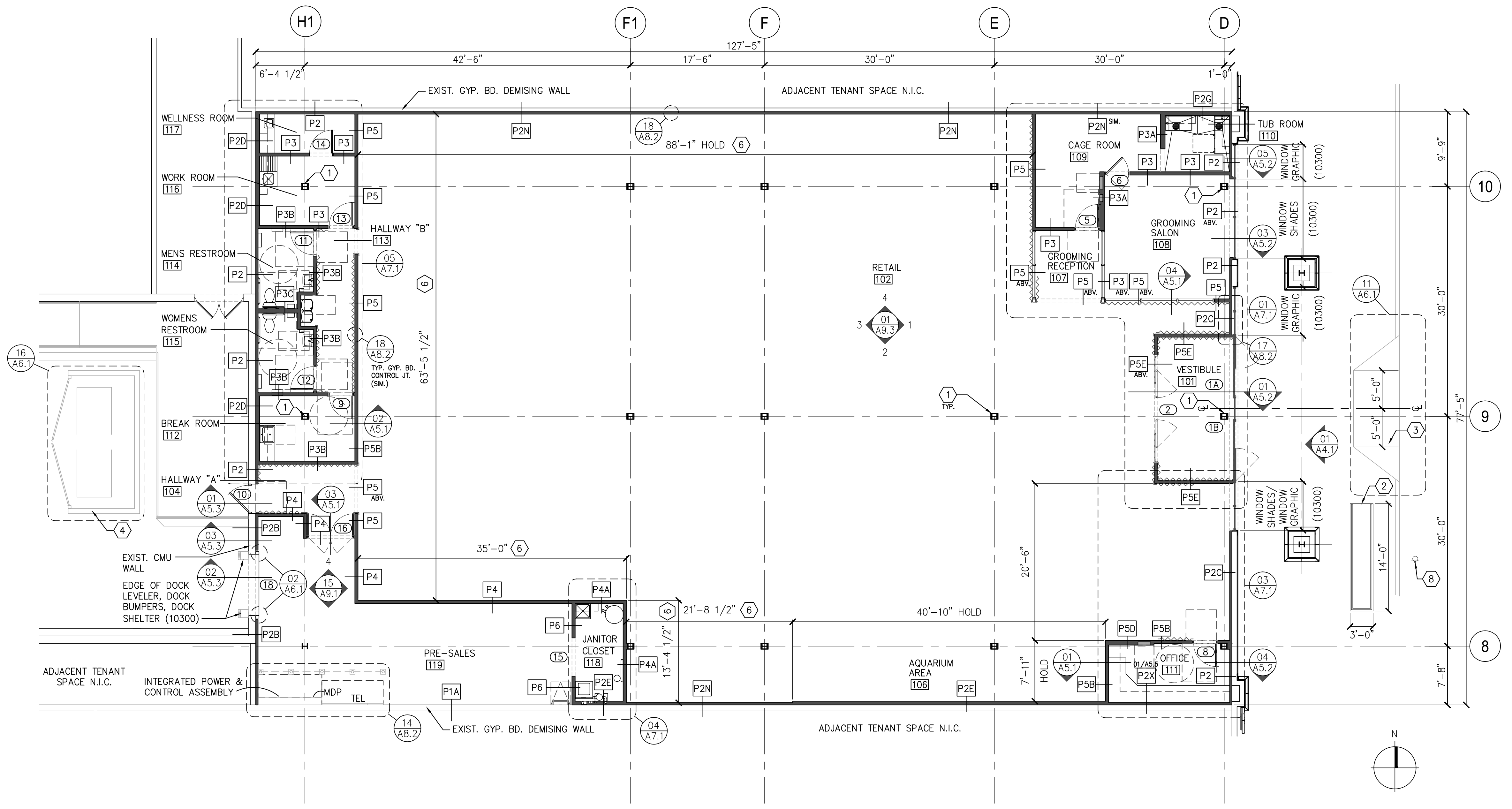
REFER TO SECTION 09260 TABLE "NONSTRUCTURAL LIMITING HEIGHTS" FOR PARTITION STANDARDS BASED ON DEFLECTION LIMIT 1/240, UNIFORM 5 PSF LATERAL LOAD. 25 GA METAL WALL FRAMING IS THE MIN. GAUGE POSSIBLE. HEAVIER GAUGE FRAMING MAY BE REQUIRED FOR THIS PROJECT, DEPENDING ON FIELD CONDITIONS AND FRAMING HEIGHTS.

- FLOOR PLAN NOTES, GENERAL:**
1. INTERIOR PARTITION DIMENSIONS ARE TO FACE OF FINISH, TYPICAL. SOME SPECIAL PARTITIONS ARE DIMENSIONED TO CENTER.
 2. VERIFY MEASUREMENTS WITH CORRESPONDING CONSTRUCTED OR EXISTING CONDITIONS PRIOR TO PROCEEDING WITH THE WORK, AND NOTIFY THE ARCHITECT IMMEDIATELY OF SIGNIFICANT DISCREPANCIES USING THE "CONTRACTOR REQUEST FOR INFORMATION" FORM (01200) AND SUPPLEMENTARY CONTRACTOR DETAILS AS REQUIRED.
 3. FINISH ELEVATIONS REFERENCED ON ARCHITECTURAL DRAWINGS ARE DATUM ELEVATIONS ABOVE THE FINISH FLOOR ELEVATION. THE CONTRACTOR MUST COORDINATE DATUM-BASED ARCHITECTURAL ELEVATIONS SHOWN WITH SITE-SPECIFIC ELEVATIONS SHOWN ON CIVIL DRAWINGS (IF ANY).
 4. PROVIDE RODENT BARRIER HARDWARE CLOTH (05500) 48" HGT. NOM., ON FRAMING BEHIND FINISH, FOR ALL NEW PERIMETER PARTITIONS THAT ARE ADJACENT TO/ ABUTTING SHELL EXTERIOR WALLS OR COMMON WITH SHELL TENANT SEPARATION ASSEMBLIES.

WALL BUMPER (10300)

P2A PARTITION TYPE SYMBOLS, REFER TO SHEETS A5.4 AND A5.5

NEW PARTITIONS, REFER TO PARTITION TYPES AND FINISH SCHEDULE FOR MORE INFORMATION



LAYOUT AND STOREFRONT AT GROOMING SALON AND GROOMING RECEPTION REVISED. FINISHES, PARTITIONS TYPES AND KEYED NOTES REVISED THROUGHOUT

FLOOR PLAN 01

REF: SOURCE: 1/8" = 1'-0"

SBLM Architects #A0009434
 11400 N. Kendall Drive, Suite 310
 Miami, FL 33176
 Telephone 305-412-9187
 Fax 305-412-6731
 www.sblm.com

James Cohen
 Lic. #22580

petco PETCO ANIMAL SUPPLIES STORES, INC. 6834 WESLEY STREET GREENVILLE, TX

DISTRIBUTION:	DATE:
25% SUBMISSION	06-28-11
75% SUBMISSION	08-11-11
98% SUBMISSION	08-16-11
100% SUBMISSION	09-23-11
PERMIT SET	09-28-11
FINAL PERMIT SET	09-20-13
BULLETIN 1	10-22-14

SBLM JOB#	PETCO P.M. JOB #
11107	11458
DRAWN:	CHECKED:
IT	MS

DRAWING TITLE:
FLOOR PLAN AND PARTITION NOTES
A2.1