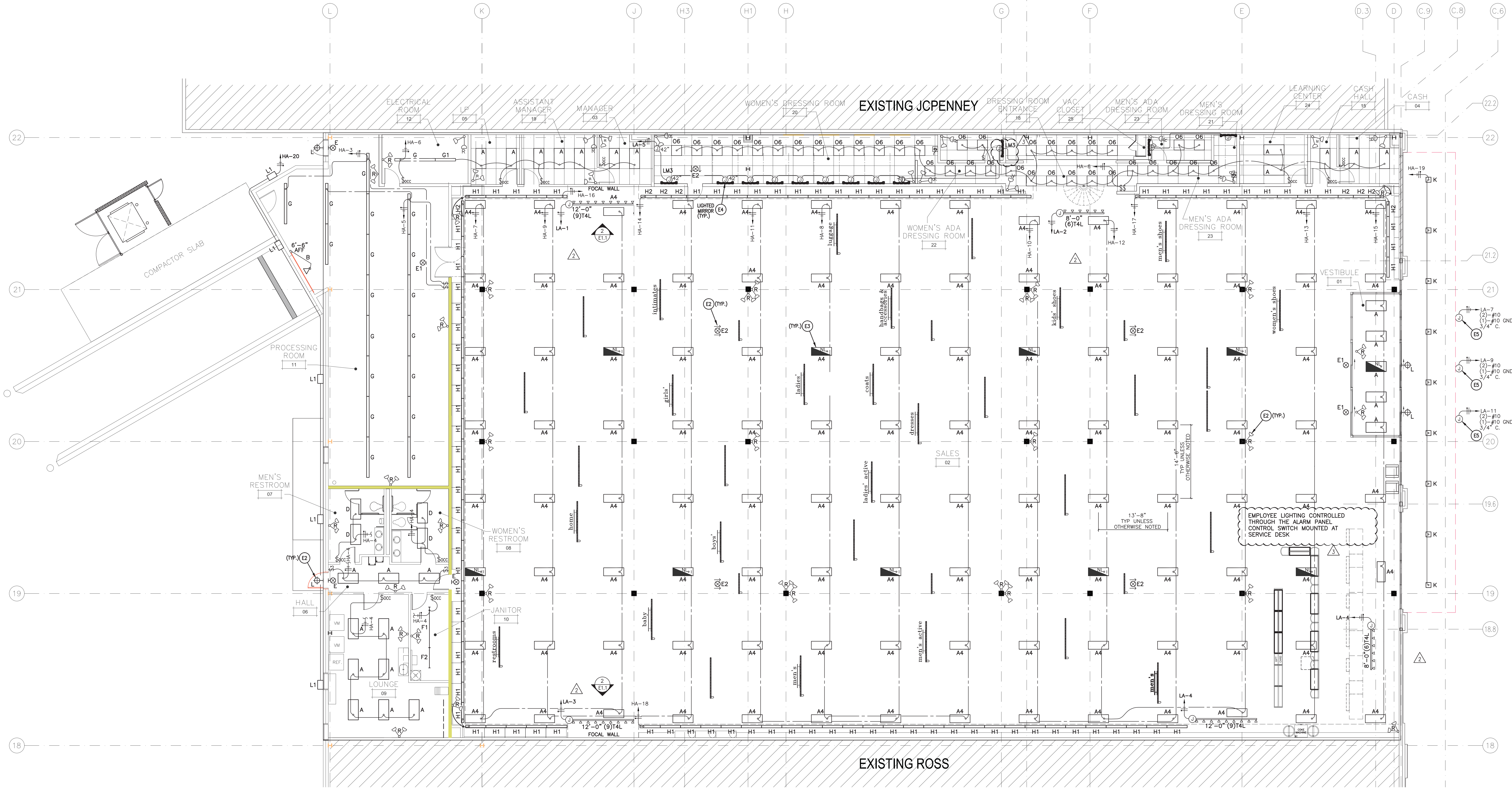


REFERENCE TO ARCHITECTURAL DETAIL FOR MARSHALLS FOCAL LIGHT POSITIONING DIAGRAM

LIGHTING FIXTURE SCHEDULE						LIGHTING FIXTURE SCHEDULE							
SYM	SIZE	MOUNTING	LAMPING TYPE	MANUFACT.	ORDERING INFORMATION	REMARKS	SYM	SIZE	MOUNTING	LAMPING TYPE	MANUFACT.	ORDERING INFORMATION	REMARKS
A	2' x 4'	RECESSED	F32TB	LITHONIA	2ESBP 232 GE UMH G835HT8		P2	16" x 7 1/2" DEEP	PENDANT	FLE10HT3/2/827	TRANS-LITE	TML2-WHT-SN-A260-XS75N & 11239 TAMGR	STEM IS 6'-0" AND CAN BE CUT IN THE FIELD. NOT USED.
A1	2' x 4'	RECESSED	F32TB	LITHONIA	2ESBP 432 GE UMH G835HT8	NOT USED.	Q	19" 7/8" x 12 1/2"	PENDANT	F57W/BX/841	OPTIMUM	HGP DC6 357 UV 2PS W/96" PENDANT	AESTHETIC HIGH-BAY WITH UPLIGHT (HGP FIXTURE). NOT USED.
A3	3 3/4" x 49 1/2"	TRACK	FP54/B35/HO	CONTECH	CTL14154/HO-PGE	NOT USED.	R	EMERGENCY	WALL	5.4W WEDGE KRYPTON	LITHONIA	ELM2	QUANTUM ELM2 SELF CONTAINED BATTERY PACK UNIT. COORDINATE EXACT LOCATION.
A4	19" x 4'	PENDANT	F32W/T8	OPTIMUM	GJ-D23-632-UV-2H1(G)-E-QC-835HL 20 FT	E.C. TO FURNISH LOCKING RECEPTACLE AT OPEN DECK CEILING (SEE NOTE 5)	S	15 25/32" x 7 3/4"	WALL	LED LIGHTBAR	COOPER	ENV-C02-LED-EI-BL3-GM	EXTERIOR WALL SCENE. NOT USED.
A10		PENDANT	210W/T9	SPECTRUM	FRDDH 22MH210 E2 277 T9 CP111 HM XX BC22 DL22	LUMEN MAX METAL HALIDE. NOT USED	S1	15 3/4" x 7 3/4"	WALL	LED LIGHTBAR	COOPER	ENT-C02-LED-EI-BL3-WH	EXTERIOR WALL SCENE. NOT USED.
A11		TRACK	CMH70/G12	CON-TECH	CTL70012WW-P	STEALTH WALL LIGHTER. NOT USED.	T4	6" x 4 3/4"	TRACK	CMH70PAR30LN/830/FL40	OPTICAL / CON TECH	CATALOG #CTL80293070MM-PGE TRACK: CON TECH TRACK SYSTEM	OPTICAL TRACK FIXTURE. NOT USED.
B		WALL	90PAR/FL/HAL	CRESCENT	DCF40CP3	DOCKLIGHT	T4L	2 7/8" x 2 1/16"	TRACK	PHILLIPS 425470 19 SPAR38/END/3000/S15	PHILLIPS / CON TECH	CATALOG #CTL603-P UNIVERSAL LAMP HOLDER AND PHILLIPS 425470 LAMP	TRACK MOUNTED SPOT LIGHT WITH 8'/12" ONE-CIRCUIT TRACK. TRACK LENGTH AS SHOWN ON PLANS.
D	2' x 4'	RECESSED	F32TB	LITHONIA	2ESBP 232 GE UMH G835HT8	FOR GYPSUM BOARD CEILINGS, ADD FLANGE KITS.	O5	10" x 4'	RECESSED	F32TB	LITHONIA	WW GF 232 MVOLT GEUMH IRWH G835HT8 RFD	HIGH GLOSS WHITE REFLECTOR. NOT USED
E1, E2	EXIT SIGN	UNIVERSAL	1 2.9W LED	SURE-LITES	LPX70RWH	UNIVERSAL MOUNT. PROVIDE CANOPY HARDWARE FOR OPEN STRUCTURE. NICKEL CADMIUM BATTERY. (SEE NOTE 4)	O6	2' x 2'	RECESSED	F17T8	LITHONIA	2RT85-217-MVOLT-GE-UMH-G830HT8	
F1	4" x 8"	SURFACE	F32TB	METALUX	8TSNF-132-UNV-TU-QHE2X32TB-UNV-INSNC	WITH HEAVY DUTY ROW ALIGNERS & TWISTEE HANGERS (16" WITH 3, 8' & 4" WITH 2)	W	2' x 2'	RECESSED	F50W/BX/841	OPTIMUM	HGX-DC6-22-450BX-UV-1PS(G)-B 841	NOT USED.
F2	4" x 4'	SURFACE	F32TB	METALUX	SNF-132-UNV-TU-QHE1X32TB-UNV-INSNC		W1	2' x 2'	RECESSED	F50W/BX/841	OPTIMUM	HGX-DC6-22-450BX-UV-1PS(G)-B 841	WIRED AS NIGHT LIGHT. NOT USED.
F3	4" x 3"	SURFACE	F32TB	METALUX		NOT USED.	WY	2' x 2'	RECESSED	F50W/BX/841	OPTIMUM	HGX-D23-22-5508X-UV-2PS(G)-B-841	NOT USED.
G	1' x 8"	PENDANT	F32TB	METALUX	8TICF-132-UNV-GE-GE232MAX-H-ULTRA-1		LIGHTING NOTES:						
G1	1' x 4'	PENDANT	F32TB	METALUX/COOPER	ICF-232-UNV-TU-QHE2X32TB-UNV-INSNC		1. STORE LIGHTING (SALES & SUPPORT) SHALL INCORPORATE QUANTUM ELM2 TYPE FIXTURES TO ACT AS EMERGENCY LIGHTS.	5. TYPE A4 PENDANT LIGHTING FITTED WITH LOCKING PLUG. NEMA L5-20P 20A, 125V NEMA L7-20P 20A, 277V E.C. TO FURNISH AND INSTALL APPROVED LOCKING RECEPTACLE AT OPEN DECK CEILING, PER REQUIRED VOLTAGE. NEMA L5-20R 20A, 125V NEMA L7-20R 20A, 277V MOUNT BOTTOM OF FIXTURE 12"-0" AFF.					
H1	3" x 4'	VALANCE	F32TB	METALUX	SNRA-232-UNV-GE232MN-U		2. NL-FIXTURES WILL BE WIRED BEFORE A SWITCH OR CONTACTOR. (FIXTURES WILL RUN 24 HOURS).	6. SIGN HANGING SIGNS PROVIDED AND INSTALLED BY T.JX.					
H2	3" x 3"	VALANCE	F25TB	METALUX	SNRA-225-UNV-GE232MN-U		3. LAYAWAY STOCK & PROCESSING ROOM LIGHTING TO BE MOUNTED AT 13' AFF. (LIGHTING TO BE COORDINATED WITH HVAC & STRUCTURAL STEEL)						
K	10-1/2" DIA.	RECESSED	MVR70/U/MED	HALO	M200T-730-23P	USE UNDER CANOPY	4. EXIT SIGNS: "E" WALL MOUNT, "E1" SINGLE FACE TOP MOUNT AND "E2" DOUBLE FACE TOP MOUNT. CHEVRON DIRECTIONAL INDICATORS/ARROWS AS INDICATED ON PLANS. FIELD COORDINATE AND CONFIRM EXACT LOCATION AND MOUNTING HEIGHT.						
L	WALL	1 28W LED	LUMARK	LUMARK	LDWP-FC-2A-MT-LL-EMLED-CD	FULL GUTOFF DOOR. FIELD CONFIRM EXACT LOCATION. EMERGENCY EGRESS LIGHT. BRONZE FINISHED.							
L1	WALL	1 40W LED	LUMARK	LUMARK	LDWP-PL-4A-MT-LL	POLYCARBONATE REFRACTOR DOOR. FIELD CONFIRM EXACT LOCATION. BRONZE FINISHED.							
LM	LIGHTED MIRROR	WALL	2 F40TB	OPTIMUM	OCLMS-W-2/40TB-UV-TU-WB30	WHITE. NOT USED							
LM2	LIGHTED 3 WAY MIRROR	WALL	F54TB/HO	STYLMARK	MODEL #620087-120	MIRROR NOT INCLUDES FRAME AND LAMPS. T.JX PURCHASE (NOT SUPPLIED BY NESCO).							
LM3	LIGHTED MIRROR	WALL	2 F40TB	OPTIMUM	OCLMS-W-2/40TB-UV-TU-CC-PBS-830-TJ MAXX	PRISM BRIGHT. 120V							



1 LIGHTING FLOOR PLAN
E1.1 SCALE: 1/8" = 1'-0"