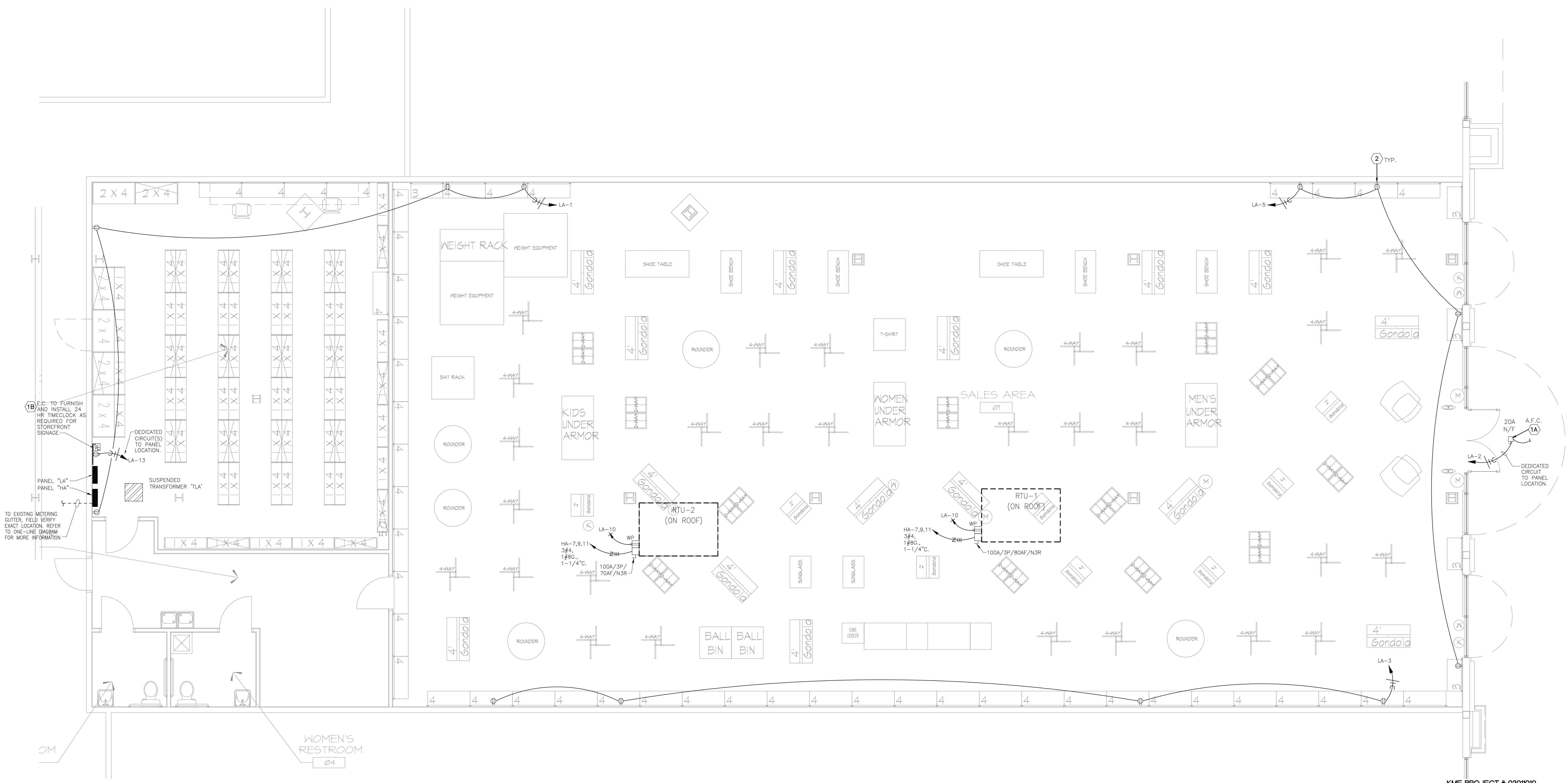


DATE	10/14/2013
PROJECT NO.	08-13-07
DRAWN BY	

**POWER PLAN**

**E1-1**

- POWER KEYED NOTES**
- (1A) ONE 20 AMP SIGN CIRCUIT REQUIRED. INSTALL DISCONNECT SWITCH AS REQUIRED BY N.E.C. 600. ALL SIGNAGE TO BE INSTALLED BY SIGN CONTRACTOR. FIELD COORDINATE EXACT LOCATION. ALL SIGNS TO BE 120V. MAKE FINAL CONNECTION AFTER SIGN INSTALLED BY OTHERS. SIGN CIRCUIT TO BE ON A DEDICATED, LOCKED-OUT CIRCUIT.
  - (1B) TIME CLOCK SHALL BE MANUFACTURED BY TORK: 1100 SERIES MODEL #1101(24-HR) TIME CLOCK TO CONTROL STOREFRONT SIGN(S). SEE DETAIL 4/EA. TIME CLOCK & SIGN CIRCUIT TO BE ON A DEDICATED, LOCKED-OUT CIRCUIT. TIME CLOCK & SIGN CIRCUIT TO BE LABELED "STOREFRONT SIGN"
  - (2) COORDINATE EXACT LOCATION WITH TENANT PRIOR TO INSTALLATION.



**1 ELECTRICAL POWER PLAN**  
SCALE: 1/4" = 1'-0"

KME PROJECT # 03011010

**KME**  
KALMANS MARSHALL ENGINEERING, INC.  
HOUSTON | DALLAS, FT. WORTH | BATON ROUGE  
19930 W. Sam Houston Parkway N., Suite 900  
Houston, Texas 77064 (281) 664-1900  
REGISTRATION # F-4111