

MECHANICAL CONTRACTOR'S NOTES

ALL OF THE MECHANICAL WORK IS NOT NECESSARILY SHOWN OR NOTED ON THESE DRAWINGS. THE CONTRACTORS SHALL VISIT THE JOB SITE AND VERIFY ALL EXISTING CONDITIONS RELATED TO THE WORK PRIOR TO BIDDING. THOSE ITEMS NOT SHOWN OR NOTED, BUT ARE DEEMED NECESSARY FOR REMOVAL OR RELOCATION BY THE OWNER OR HIS REPRESENTATIVE, SHALL BE PART OF THIS CONTRACT. THE SUBMISSION OF THE PROPOSALS SHALL BE CONSIDERED AS EVIDENCE THAT THE CONTRACTORS HAVE VISITED THE SITE. NO EXTRA PAYMENTS WILL BE ALLOWED, DUE TO EXTRA WORK MADE NECESSARY BY THE CONTRACTOR'S FAILURE TO VISIT THE JOB SITE.

MECHANICAL CONTRACTOR IS TO COORDINATE ALL WORK WITH OTHER TRADES INVOLVED.

NOTIFY HIBBETT SPORTS CONSTRUCTION DEPARTMENT (1-202-942-4292) PRIOR TO THE INSTALLATION OF THE LIGHTSTAT THERMOSTAT. FAILURE TO CALL HIBBETT'S CONST. DEPT. PRIOR TO PLACEMENT, CAUSING RELOCATION, SHALL BE AT THE MECHANICAL CONTRACTORS EXPENSE.

DO NOT ATTACH ANYTHING TO UPPER LEVEL SLAB OR ROOF DECK.

PROVIDE SEISMIC BRACING AND RESTRAINTS FOR MECHANICAL EQUIPMENT AND DUCT WORK PIPING AS REQUIRED FOR STRUCTURES BUILT IN SEISMIC HAZARD GROUP B. MECHANICAL SYSTEM SUPPORTS SHALL BE DESIGNED AND INSTALLED FOR THE SEISMIC FORCES IN ACCORDANCE WITH THE BUILDING CODE.

NEW AIR DEVICE SCHEDULE

PLAN MARK	QTY.	*METALAIR MODEL NO.	FACE SIZE	NECK SIZE	FLEX SIZE	TYPE	NOTES
A	18	7350-6 (WHITE)	24"x24"	VERIFY	VERIFY	DIFF.	1,2,3,4
B	2	5800 (WHITE)	12"x12"	VERIFY	6"φ	DIFF.	1,4,5
C	1	5800 (WHITE)	12"x12"	VERIFY	VERIFY	DIFF.	1,2,3,4
D	4	RP-1 (WHITE)	24"x24"	---	---	R.G.	2,4

NOTES:

- PROVIDE SQUARE NECK TO ROUND ADAPTER AS REQUIRED
- FRAME SHALL FIT LAY-IN CEILING MODULE
- PROVIDE & INSTALL MANUAL VOLUME DAMPER
- FURNISH & INSTALL NEW EQUIPMENT AS SHOWN
- PROVIDE T-BAR PLASTER FRAME AS REQUIRED FOR GYP. BD. MOUNTING APPLICATION.

* OR APPROVED EQUAL

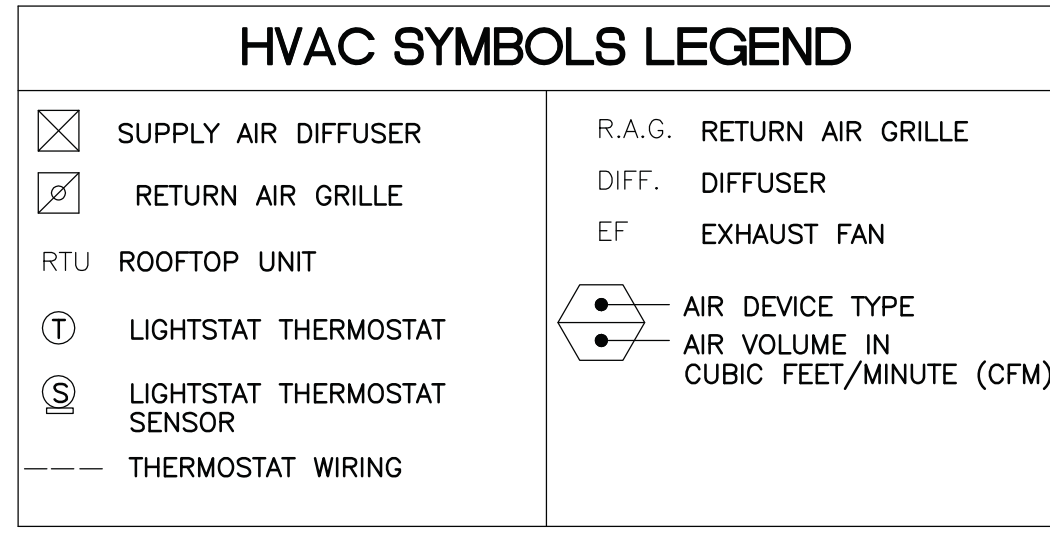
NEW EXHAUST FAN SCHEDULE

MARK EF #	TOTAL CFM	TSP IN WC	MAX RPM	TYPE DRIVE	TYPE FAN	CONTROL WITH	MOTOR HP/AMPS	MAX SONES	ELECTRICAL DATA	FAN SERVICE	REMARKS
EF-1	70	.125	---	DIRECT	CEILING MOUNT	LIGHT SWITCH	2.0 AMPS	4.0	120 VOLT 60 Hz 1 PHASE	TOILET EXH.	BASIS OF DESIGN: BROAN #657

NEW HVAC EQUIPMENT SCHEDULE

MANUFACTURER	MODEL NO.	COOLING CAPACITY	EER	HEATING CAPACITY	COP	CFM	O.A.	TONNAGE	ELECTRICAL
RTU - 1									
CARRIER	50TFQ012---601	112,000 BTU	9.0	105,000 BTU	3.1	4000 CFM	800 CFM	10 TON	480-3-60
RTU - 2									
CARRIER	50TFQ008---601	86,000 BTU	9.0	78,000 BTU	3.0	3000 CFM	450 CFM	7.5 TON	480-3-60

NOTES: 1. UNIT IS TYPICAL SPEC. LANDLORD MECHANICAL CONTRACTOR MUST SELECT UNIT THAT IS COMPATIBLE WITH CONNECTION AND OPERATION OF LIGHTSTAT THERMOSTATS.



MECHANICAL SPECIFICATIONS

A. LIGHTSTAT THERMOSTAT TO HAVE A LIGHT ACTIVATED SENSOR. PRESET TEMP: 74°F AIR - 68°F HEAT MODEL #TME-H52-RS

- USE ONLY #18 STRANDED 2 WIRE CABLE WITH A FOIL SHIELD. BELDEN #8760 CAROL #C2534 AMERICAN #A22602
- MOST CALLS RECEIVED BY THE TECH SUPPORT INVOLVING REMOTE SENSOR PROBLEMS ARE CAUSED BY THE USE OF THE IMPROPER CABLE FOR REMOTE SENSOR INSTALLATION. IT IS CRITICAL THAT THE CABLE BE TERMINATED EXACTLY ACCORDING TO INSTALLATION INSTRUCTIONS.
- ALL NATIONAL, STATE AND LOCAL CODES MUST BE FOLLOWED.
- FOR ASSISTANCE, CALL LIGHTSTAT TECH SUPPORT AT: 1-800-292-2444.
- SEE FLOOR PLAN SHEET.

B. IF BUILDING IS EQUIPPED WITH A FIRE SPRINKLER SYSTEM, REQUIRED ALTERATIONS TO THE SYSTEM ARE TO BE DESIGNED AND INSTALLED BY A LICENSED SPRINKLER INSTALLER ACCORDING TO CODE. PROVIDE APPROVED SPRINKLER DWGS. TO PROPERTY/OPERATIONS MGR.

C. HVAC REQUIREMENTS DURING CONSTRUCTION THE FOLLOWING IS REQUIRED BY HIBBETT SPORTING GOODS ON ALL HVAC PREVENTATIVE MAINTENANCE INSPECTIONS. THESE ITEMS MUST BE PERFORMED AND CHECKED OFF, NOTING ANY PERTINENT INFORMATION (i.e., OPERATING PRESSURES, ETC.)

- REPLACE DISPOSABLE FILTERS OR CLEAN PERMANENT TYPE FILTERS.
- LUBRICATE ALL BEARINGS, PUMPS, FANS AND MOTORS AS NEEDED.
- INSPECT FOR LEAKS ON EQUIPMENT AND PIPING.
- CLEAN AND CHECK CONTROLS ON THERMOSTAT.
- ADJUST FOR PROPER TENSION ON ALL BELTS AND PULLEYS.
- INSPECT ALL ELECTRICAL COMPONENTS AND TIGHTEN AS NECESSARY.
- CHECK OPERATION PRESSURES OF COMPRESSORS AND OIL LEVEL IN CRANK CASE.
- CLEAN OUT CONDENSATION DRAIN PANS AND LINES.
- ANY NORMAL INSPECTION SERVICE REQUIRED FOR THE UNIT.
- LIST EQUIPMENT INFORMATION BELOW.

D. FIRE EXTINGUISHERS: REFER TO SCHEDULE OF RESPONSIBILITIES (SHEET T1) TO VERIFY THE PARTY RESPONSIBLE FOR INSTALLING FIRE EXTINGUISHERS. THE SAME RESPONSIBLE PARTY WILL BE REQUIRED TO HAVE THE FIRE EXTINGUISHERS LABELED WITH THE PROPER STATES INSPECTION TAG

HVAC + SPRINKLER KEYED NOTES

REFER TO THE RESPONSIBILITY OF WORK ON SHEET T-1

- MECHANICAL CONTRACTOR IS TO INSTALL NEW H.V.A.C. EQUIPMENT, UNIT AND CFM SIZING MUST FOLLOW 350 SQ. FT. PER TON. ALL NEW DUCTWORK AND DIFFUSERS ARE TO BE INSTALLED. SPRINKLER LAYOUT IS NOT TO INTERFERE WITH LIGHTING, MECHANICAL, OR CEILING LAYOUT PER SHEET A4 DIRECTION. H.V.A.C. UNITS SPECIFICATIONS ARE ASSUMED. CONTACT HIBBETT SPORTS CONSTRUCTION DEPARTMENT WITH QUANTITY AND SIZE OF H.V.A.C. SYSTEM.)
- METALAIR 7350-6 WHITE 24" X 24" SUPPLY AIR DIFFUSER. INSTALL LAYOUT AS CLOSE TO PLAN AS POSSIBLE.
- METALAIR 5800 WHITE 12" X 12" SUPPLY AIR DIFFUSER W/T-BAR PLASTER FRAME TO BE INSTALLED IN GYP. BD. CEILING. INSTALL LAYOUT AS CLOSE TO PLAN AS POSSIBLE.
- LANDLORD'S MECHANICAL CONTRACTOR IS TO INSTALL NEW EXHAUST FAN/LIGHT COMBO AND DUCT. UNIT SPECS ARE 4"φ DUCT SIZE, 2.0 AMPS, 70 CFM, 4.0 METALAIR RP-1 WHITE 24" X 24" RETURN AIR GRILLE. INSTALL LAYOUT AS
- SONES, 120v/1ph/ 60hz CLOSE TO PLAN AND SENSOR LOCATIONS AS POSSIBLE.
- RECOMMENDED T-STAT/LIGHTSTAT LOCATION FOR EACH ROOF TOP UNIT. THERMOSTAT PROVIDED BY TENANT. COORDINATE EXACT LOCATION WITH ELECTRICAL CONTRACTOR AND HIBBETT'S CONSTRUCTION DEPARTMENT. T- STAT IS SET FOR 68°F HEATING/ 74°F COOLING. SEE DETAIL 3/M-1 FOR DETAILS.
- RECOMMENDED LOCATION TO INSTALL NEW LIGHTSTAT SENSOR. SENSORS PROVIDED BY TENANT. MOUNT AT HEIGHT NOTED ON COLUMN ELEVATION DETAILS (SEE DETAIL 9/A-2.2).
- NOT USED ON THIS PROJECT

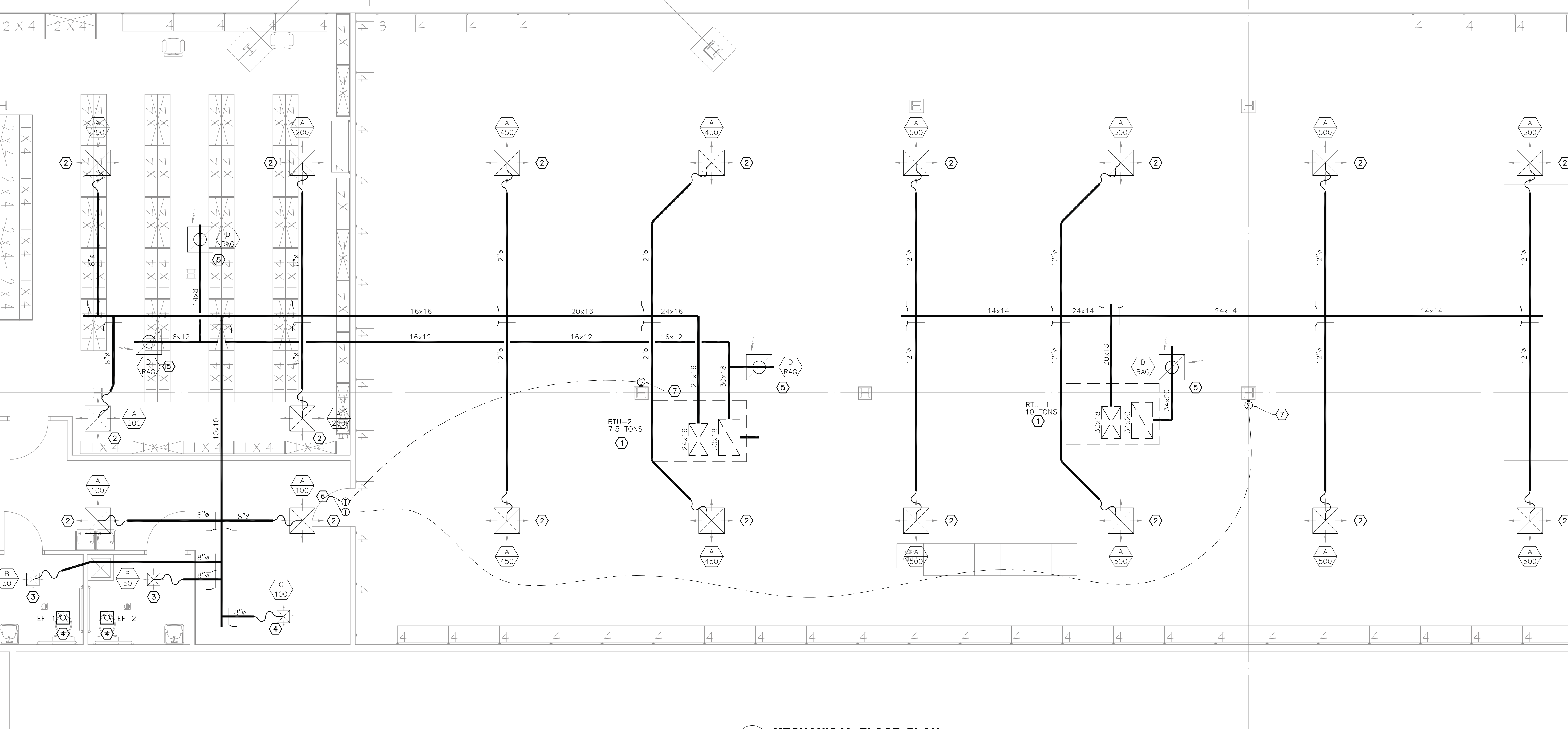
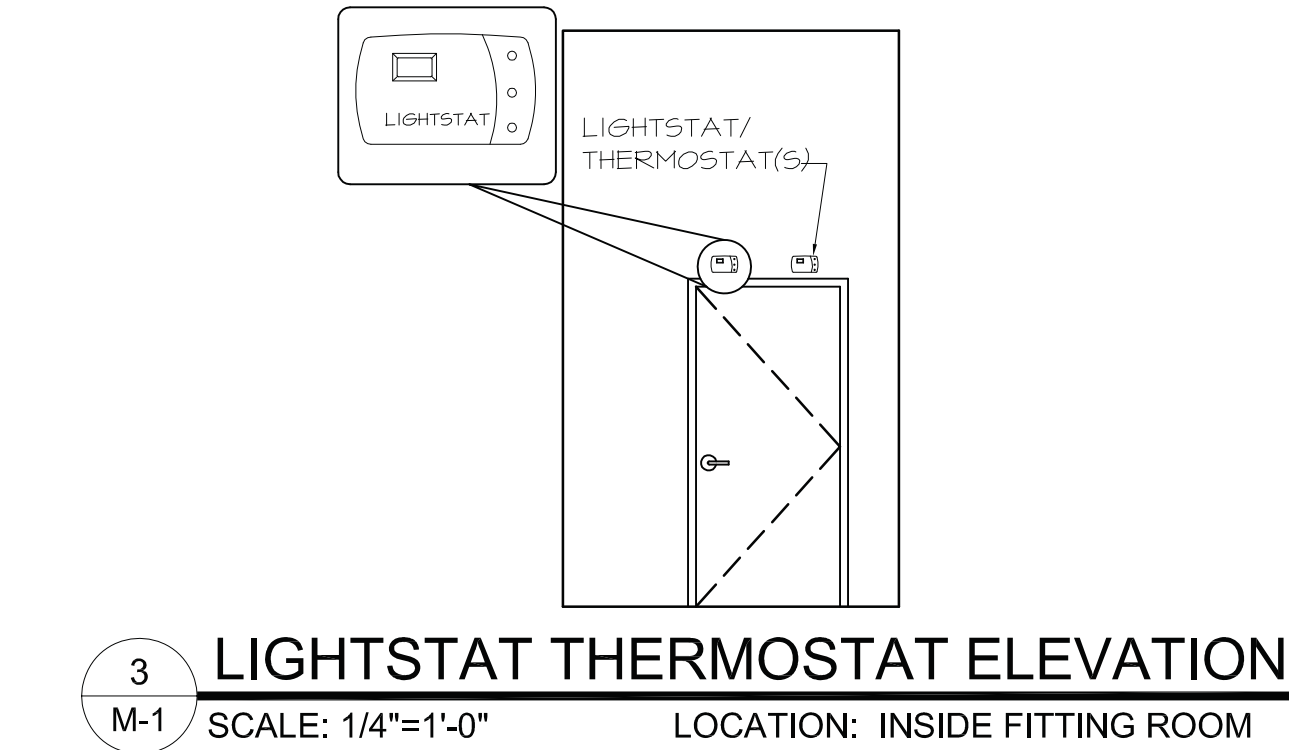
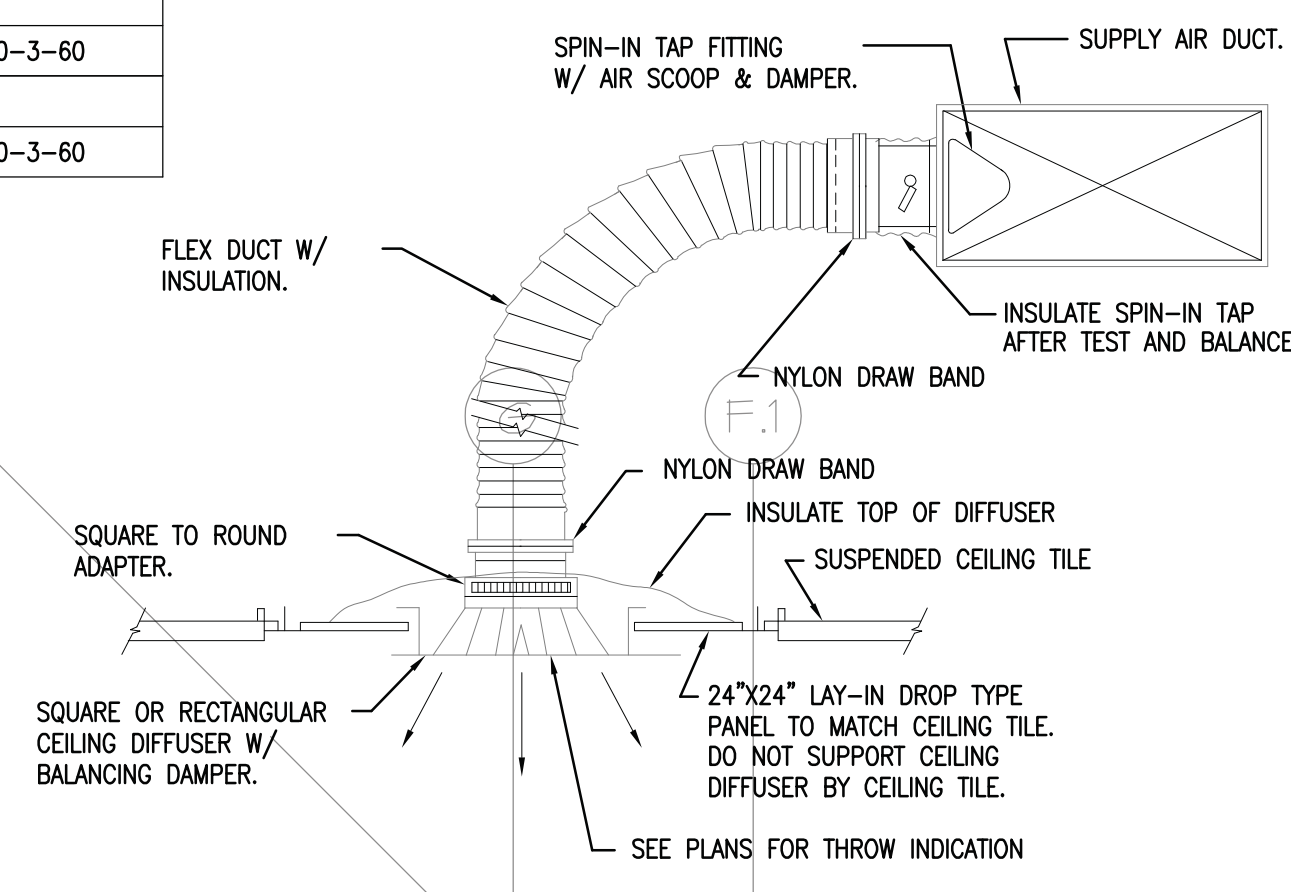
LIGHTSTAT THERMOSTAT ORDERING INFORMATION:

LIGHTSTAT THERMOSTATS MUST BE ORDERED FROM HIBBETT SPORT'S REP @ LIGHTSTAT, INC. ONE STAT MUST BE ORDERED PER UNIT. LIGHTSTAT THERMOSTAT USED FOR HIBBETT SPORTS HAVE SPECIFIC SETTINGS (74° A/C & 68° HEAT) WHEN ORDERING. VERIFY THAT HIBBETT'S SETTINGS ARE PRESET ON STATS ORDERED. FAILURE TO DO SO WILL RESULT IN RE-INSTALLATION AT RESPONSIBLE PARTY'S EXPENSE. THERMOSTATS ARE COMPATIBLE WITH MOST MANUFACTURERS. ADAPTOR CARDS MUST BE INSTALLED TO SUPPORT TRANE UNITS.

ORDERING CONTACT: BETSY RENOUF @ 1-800-292-2444 OR betsy@lightstat.com

CONTRACTOR'S NOTE:

H.V.A.C. CONTRACTOR TO ENSURE THERE IS ADEQUATE DISTRIBUTION OF AIR-CFM'S THROUGHOUT THE ENTIRE LEASED PREMISES. LANDLORD IS RESPONSIBLE FOR H.V.A.C. ARCHITECTURAL SHOP DRAWINGS FOR THE ROOFTOP UNITS. LANDLORD TO ENSURE ALL H.V.A.C. AND SPRINKLER SYSTEMS TO BE INSTALLED AROUND HIBBETT'S LIGHTING LAYOUT. SEE SHEET A-4 PRIOR TO INSTALLATION.



KME PROJECT # 0301010

AKME
KALAMANS MARSHALL ENGINEERS, INC.
HOUSTON | DALLAS/FT. WORTH | BATON ROUGE
18930 W. Sam Houston Parkway N., Suite 900
Houston, Texas 77064 (281) 664-1900
REGISTRATION # F-4111