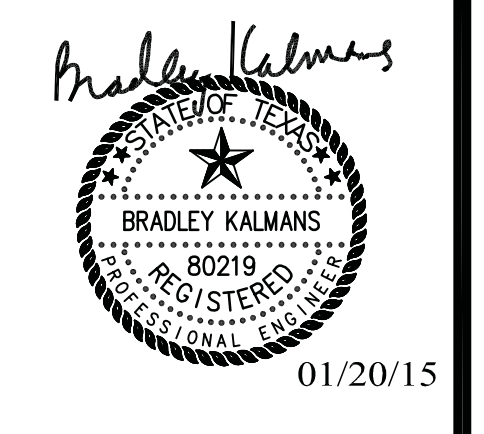
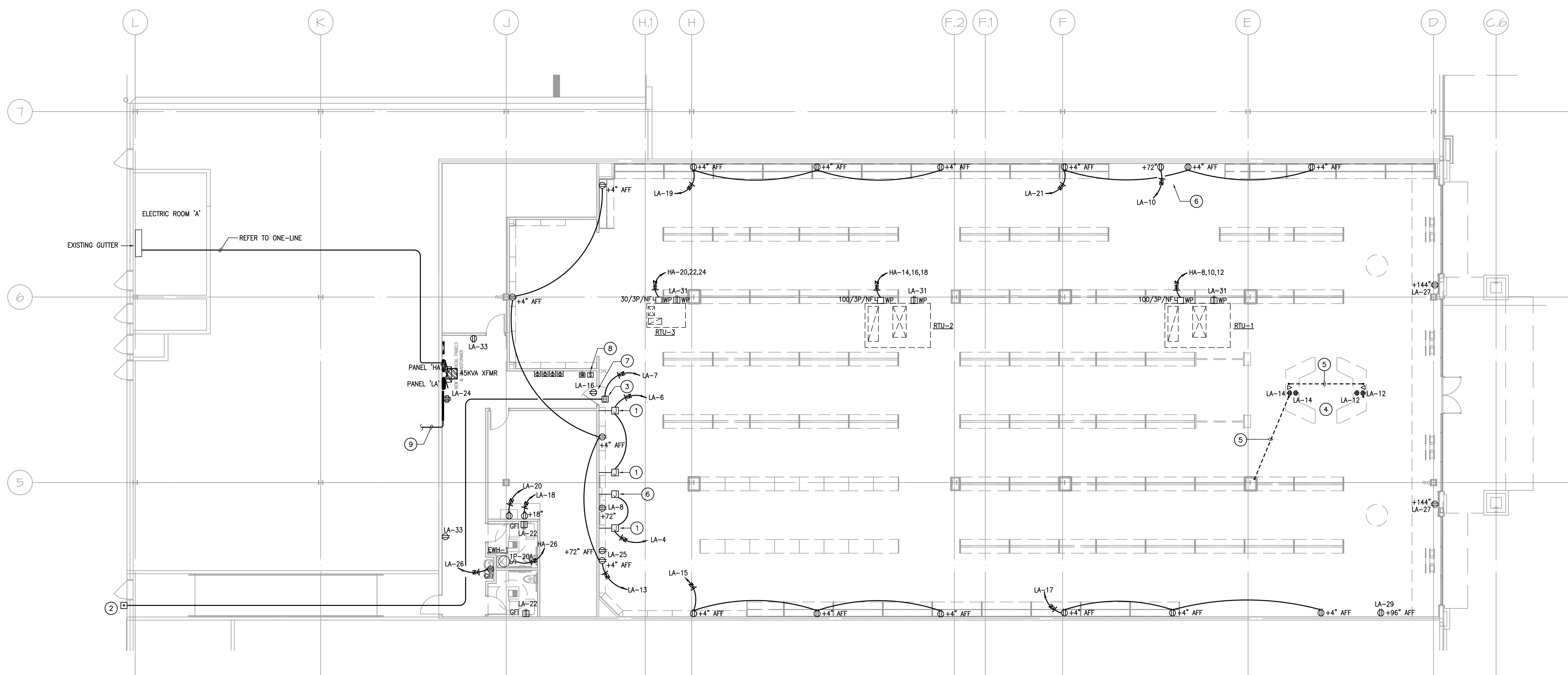


TELE/DATA/AV/SECURITY NOTES	CIRCUITING LEGEND	POWER KEY NOTES	POWER GENERAL NOTES
<p>1. ELECTRICAL CONTRACTOR SHALL COORDINATE WITH SECURITY, TELE/DATA AND A/V CONSULTANTS/VENDORS FOR ADDITIONAL SCOPE OF CONDUITS, OUTLETS AND BACK BOXES REQUIREMENTS.</p>	<p>INDICATES BRANCH CIRCUIT DESIGNATION — 4 — INDICATES HEIGHT A.F.F. UNLESS OTHERWISE NOTED.</p> <p>INDICATES BRANCH CIRCUIT DESIGNATION — H-4,6,8 — INDICATES DISCONNECT SIZE 30/3P/15AF</p>	<p>1 WALL MOUNTED JUNCTION BOX MOUNTED AT 72" A.F.F. COORDINATE EXACT LOCATION WITH ARCHITECT/OWNER PRIOR TO ROUGH-IN.</p> <p>2 DELIVERY BUZZER SYSTEM PUSHBUTTON AT 54" A.F.F. AND POWER TRANSFORMER HIGH ON WALL FURNISHED AND INSTALLED BY ELECTRICAL CONTRACTOR. PUSH BUTTON SHALL BE EDWARDS #603 AND TRANSFORMER SHALL BE EDWARDS #596. CONNECT PUSHBUTTON TO POWER TRANSFORMER AS REQUIRED.</p> <p>3 DELIVERY BUZZER SYSTEM BUZZER MOUNT ON WALL AT 9'-0" A.F.F. FURNISHED AND INSTALLED BY ELECTRICAL CONTRACTOR. BUZZER TO BE AN EDWARDS #15-0AJ. CONNECT BUZZER TO POWER TRANSFORMER AS REQUIRED.</p> <p>4 PROVIDE (4) QUAD RECEPTACLES MOUNTED IN BASE OF CASH WRAP MILLWORK WITH 3'-0" OF FLEX CONDUIT AND (2) TELEPHONE 8-WIRE CABLES FROM POINT OF DEMARCATION TO CASH WRAP WITH (2) MODULAR CASH WRAP ATTACHED TO 4'-0" OF EXCESS WIRE AT CASH WRAP. CONTRACTOR TO COORDINATE EXACT LOCATION AND ALL OTHER REQUIREMENTS WITH CASH WRAP VENDOR/TENANTS PRIOR TO INSTALLATION.</p> <p>5 PROVIDE (2) 2" CONDUIT STUB-UPS FOR TELE/DATA CABLING AND (1) 3/4" CONDUIT STUB-UP FOR POWER WIRING CONCEALED UNDER SLAB. CONTRACTOR TO COORDINATE EXACT LOCATION AND TERMINATION POINTS WITH TENANT PRIOR TO INSTALLATION.</p> <p>6 JUNCTION BOX FOR CABLE-TV CABLING. CONTRACTOR TO COORDINATE EXACT LOCATION AND OTHER REQUIREMENTS WITH TENANT/TV CONSULTANT PRIOR TO INSTALLATION.</p> <p>7 RECEPTACLE MOUNTED AT 96" A.F.F. FOR SECURITY SYSTEM CONTROL BOX ABOVE DOOR.</p> <p>8 SECURITY KEYPAD AT 60" A.F.F. CONTRACTOR TO PROVIDE (1) 1" CONDUIT TO JOIST SPACE AND TO COORDINATE WITH SECURITY CONSULTANT FOR ALL REQUIREMENTS PRIOR TO INSTALLATION.</p> <p>9 ROUTE (1) 3" EMPTY CONDUIT WITH RING AND STRING FROM TELEPHONE BOARD TO BUILDING TELEPHONE CABINET. COORDINATE CONDUIT TERMINATIONS WITH TENANT'S REPRESENTATIVE PRIOR TO INSTALLATION.</p>	<p>1. PROVIDE PULL STRINGS IN ALL EMPTY CONDUITS.</p> <p>2. ALL JUNCTION BOXES, CONDUITS, AND WIRES SHALL BE SIZED PER NEC.</p> <p>3. REFER TO ARCHITECTURAL DRAWINGS FOR EXACT LOCATION AND MOUNTING HEIGHTS OF ALL DEVICES SHOWN ON THE DRAWING. COORDINATE WITH OWNER FOR EXACT LOCATION AND OTHER REQUIREMENTS PRIOR TO ROUGH-IN.</p> <p>4. ALL HOME RUNS SHALL BE 2#12 + 1#12 GND IN 3/4" CONDUIT U.O.N.</p> <p>5. REFER TO SHEET E3.01 FOR SYMBOLS, SPECIFICATIONS AND ABBREVIATIONS.</p> <p>6. ALL DEVICES AND EQUIPMENT OUTSIDE THE SCOPE OF WORK ARE EXISTING TO REMAIN U.O.N.</p> <p>7. CIRCUIT NUMBERS INDICATED ARE FOR DESIGN PURPOSES ONLY. CONTRACTOR SHALL COORDINATE ACTUAL CIRCUIT NUMBERS AT THE TIME OF INSTALLATION AND TO PROVIDE AN ACCURATELY TYPED PANEL BOARD SCHEDULE FOR EACH PANEL BOARD.</p> <p>8. ELECTRICAL CONTRACTOR SHALL NOTIFY THE ENGINEER OF ANY PROBLEMS PERTAINING TO CIRCUIT AVAILABILITY OR LOAD CAPACITY PRIOR TO INSTALLATION.</p> <p>9. CONTRACTOR SHALL REFER TO MECHANICAL/PLUMBING DRAWINGS FOR EXACT LOCATION OF EQUIPMENT AND SCHEDULES. CONTRACTOR SHALL PROVIDE ALL ELECTRICAL DISCONNECTS, BRANCH CIRCUITRY, CIRCUIT BREAKERS AND CONNECTIONS REQUIRED TO POWER EQUIPMENT.</p> <p>10. CONTRACTOR TO COORDINATE EXACT LOCATION OF DISCONNECT SWITCHES, JUNCTION BOXES AND SINGLE POLE TOGGLE SWITCHES WITH MECHANICAL/PLUMBING CONTRACTORS PRIOR TO INSTALLATION.</p> <p>11. ALL RECEPTACLES LOCATED WITHIN 6'-0" OF SINK SHALL BE GFCI TYPE.</p>

WINDLE + VOLPPE
 ARCHITECTS
 7650 SHILOH BLVD., SUITE 200
 HOUSTON, TEXAS 77065
 PH: 713-955-1590



SHOE DEPT. ENCORE
CROSSROADS MALL
 GREENVILLE, TEXAS
GREENVILLE PROPERTIES LTD.
 GREENVILLE, TEXAS



1 ELECTRICAL POWER FLOOR PLAN
SCALE: 1/8" = 1'-0"

KMESALASO'BRIEN
Houston | Dallas/Ft. Worth | Baton Rouge
10930 W. Sam Houston Parkway N., Suite 900
Houston, Texas 77064
281.664.1900 | Registration No. F-4111
KMES Project No. 03011009

DATE	1/20/2015	PROJECT NO.	08-12-06	DRAWN BY	PS
------	-----------	-------------	----------	----------	----

ELECTRICAL POWER PLAN

E2.01