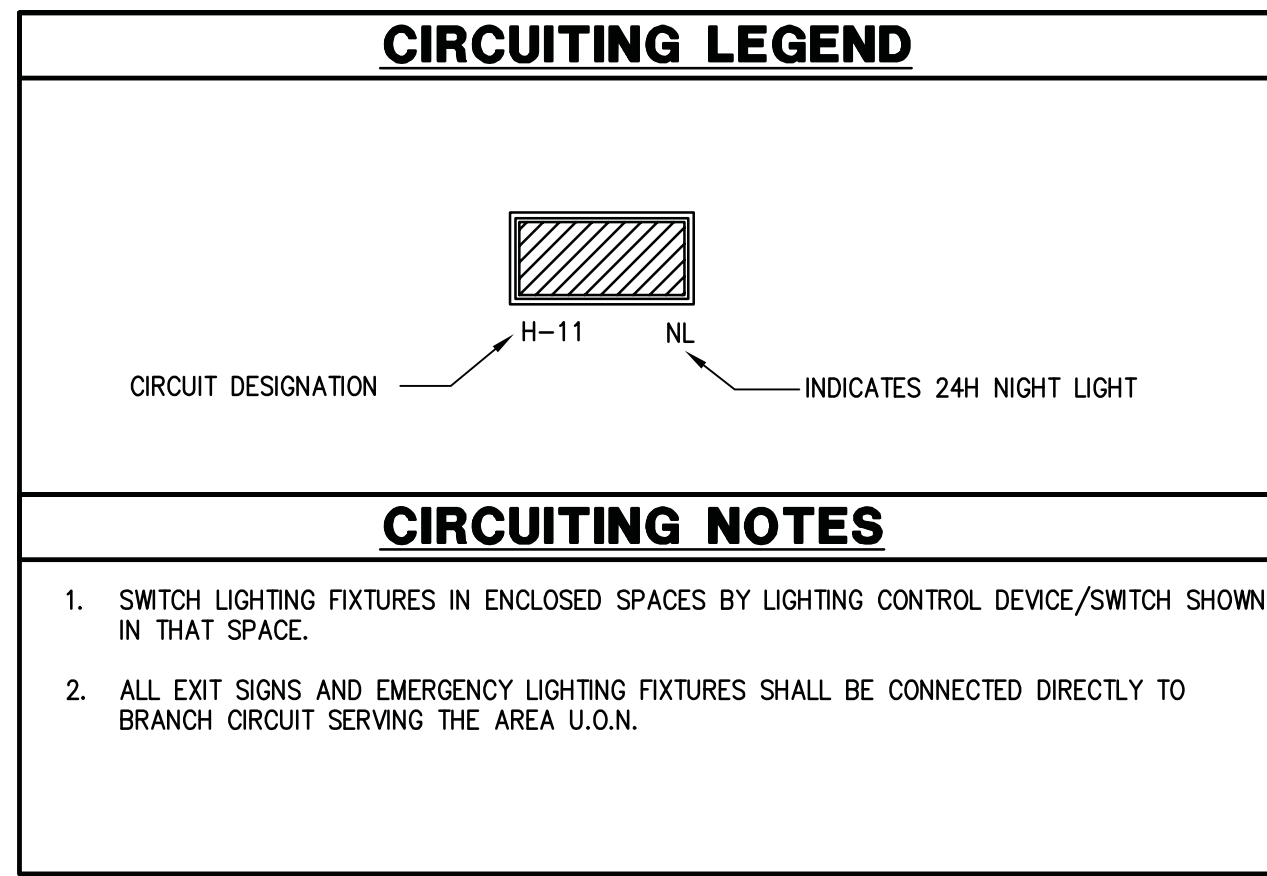
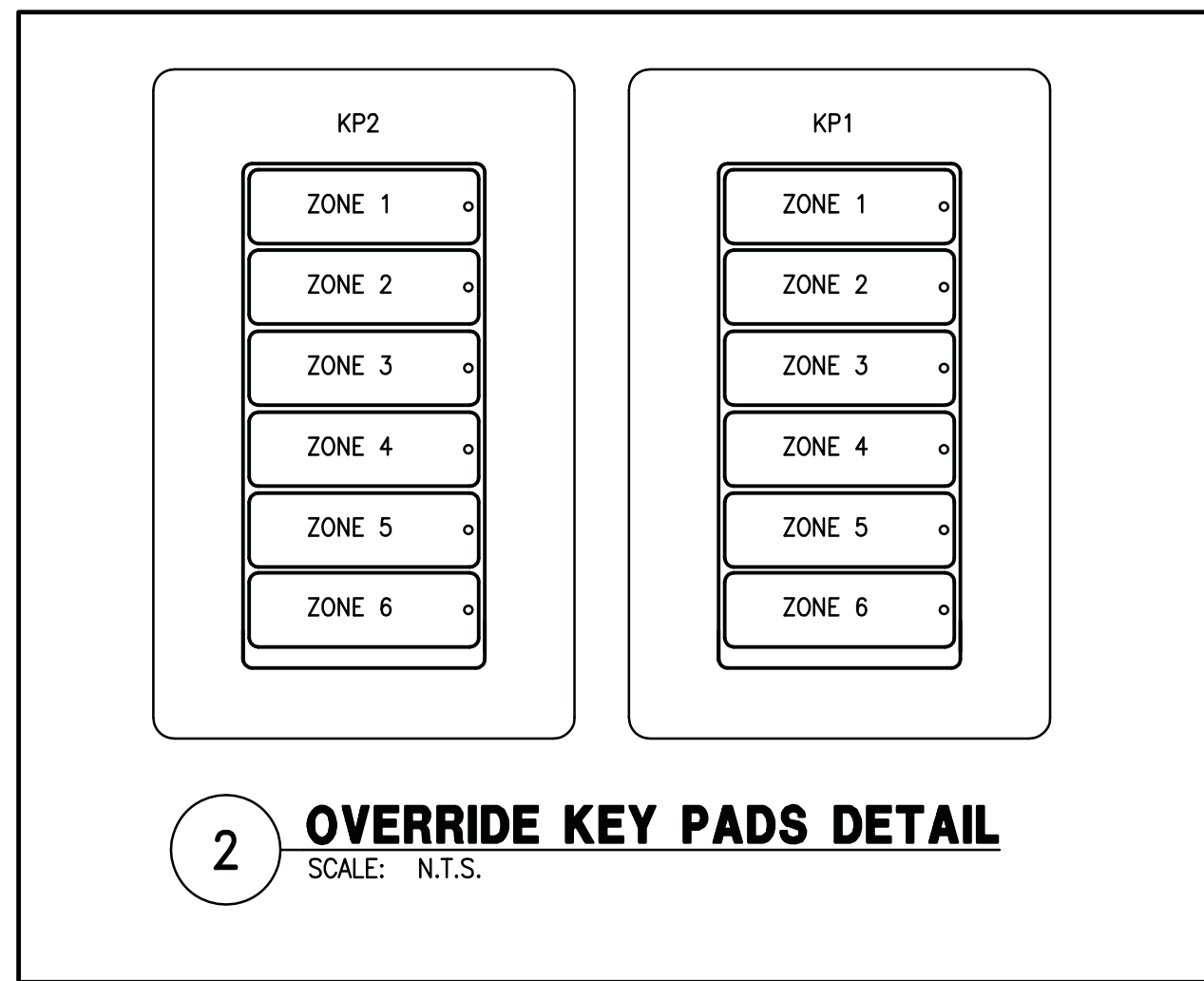


LIGHTING PLAN KEY SCHEDULE		
VOLT	LAMP/WATTS	
UNV	(2)T5/28 (4)T5/28	NEW 4' 15-25415-TBW-UNV-EBT1-U WITH (2) F54 T5 HO LAMPS. NEW 8' 8T15-25415-TBW-UNV-EBT1-U WITH (4) F54 T5 HO LAMPS.
UNV	(1)T8/17 (1)T8/32 (2)T8/32	NEW SINGLE TUBE STRIP LIGHT W/ ELECTRONIC BALLAST W/ 1 OR 2 F34 T8 1'S 4100K LAMPS. COORDINATE WITH OWNER FOR EXACT SPEC OF FIXTURE PRIOR TO BID AND PURCHASE.
120	CFL/23	NEW "HALO" SINGLE CIRCUIT, MINIATURE TRACK, SIZE AS SHOWN. "HALO" LZR303P HEAD, LAMP W/ COMPACT FLUORESCENT FLOODS 23W. S = SUSPEND TRACK W/ "HALO" 992 PENDANT KITS. 2 @ 2' & 4', 3 @ 8'. F = FLUSH MOUNT.
120	200 MAX	NEW "ELLINGTON" ELN52MBK5 52" PENDANT MOUNTED CEILING FAN W/ BLACK HOUSING AND BLACK BLADES. MOUNT FAN TO UNISTRUT. BALANCE FAN.
120	CFL/23	NEW CUSTOM LIGHTS "H1CYLAH19WH" LAMP SUPPLIED BY TENANT.
120	CFL/23	NEW "HALO" H7ICTNB 6" RECESSED DOWNLIGHT W/ ERT704 EYEBALL TRIM. LAMPED W/ PF3016-3100K COMPACT FLUORESCENT BULB.
-	-	NEW SUSPENDED SECURITY GLOBE WITH BLINKING, RED LED PROVIDED BY TENANT.
UNV	-	NEW CLEAR L.E.D. ACRYLIC EDGE LIT EXIT LIGHT W/ BATTERY BACKUP.
UNV	-	NEW "CCX" SURE-LITES CC-3-WH 5.4 WATT (2) EMERGENCY LIGHT W/ BATTERY BACKUP.
120	GU24/18	RECESSED EXHAUST FAN & LIGHT COMBO. COORDINATE WITH OWNER FOR EXACT SPEC OF FIXTURE PRIOR TO BID AND PURCHASE.
UNV	LED/35	ABOVE EXIT DOOR EMERGENCY LIGHTING FIXTURE WITH BATTERY BACK-UP. COORDINATE WITH TENANTS FOR EXACT TYPE PRIOR TO BID AND PURCHASE. BASIS OF DESIGN LITHONIA AFN-EXT

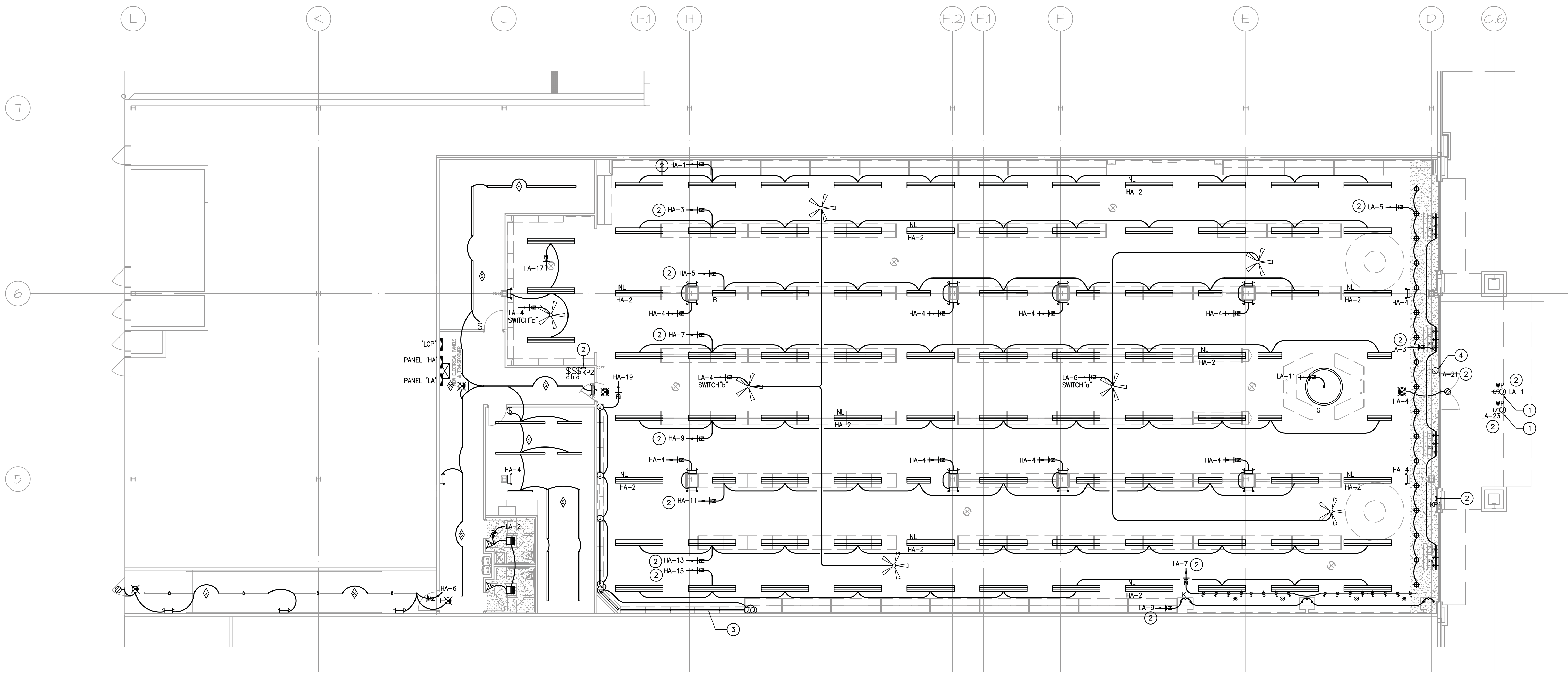
THIS LIGHTING FIXTURE SCHEDULE IS FOR REFERENCE AND FINAL APPROVAL SHALL BE PER ARCHITECT. REFER TO ARCHITECTURAL PLANS FOR EXACT SPECIFICATIONS AND REQUIREMENTS OF ALL LIGHTING FIXTURES PRIOR TO PURCHASE AND INSTALLATION.



- LIGHTING KEY NOTES**
- PROVIDE WEATHERPROOF JUNCTION BOX WITH 20A, 120V BRANCH CIRCUIT TO POWER EXTERIOR SIGNAGE. CONTRACTOR TO PROVIDE 1P-20A RATED TOGGLE SWITCH ABOVE CEILING IN AN ACCESSIBLE AREA AS A DISCONNECT MEAN AND TO COORDINATE EXACT LOCATION AND REQUIREMENTS WITH OWNER PRIOR TO ROUGH-IN. EXTERIOR SIGNAGE SHALL BE CONTROLLED VIA PHOTOCELL/TIME CLOCK AS DIRECTED BY OWNER.
 - LIGHTING BRANCH CIRCUIT SHALL BE CONTROLLED VIA TIME CLOCK AND ON/OFF/OVERRIDE DIGITAL SWITCH. CONTRACTOR TO PROVIDE NEW COOPER GREENGATE LITEKEEPER 32 "LCP", LITEKEEPER LOGIC BOARD, AND GDS INTERFACE KIT AS REQUIRED FOR LIGHTING CONTROL. LIGHTING CONTROL PANEL SHALL HAVE 32 LOW VOLTAGE INPUT CONNECTIONS WITH ASTRONOMIC CLOCK AND TIME SCHEDULE. COORDINATE EXACT LOCATION OF (2) DIGITAL KEYPADS "KP1" AND "KP2" (COOPER GREENGATE GDS-GTSS) WITH OWNER PRIOR TO INSTALLATION.
 - COVE LIGHTING: CONTRACTOR TO COORDINATE EXACT LOCATION AND OTHER REQUIREMENTS WITH ARCHITECT/TENANT PRIOR TO INSTALLATION.
 - EXISTING JUNCTION BOX TO POWER EXTERIOR CANOPY LIGHTING FIXTURES. CONTRACTOR TO CONNECT USING 3/4" x 1/2" GND IN 3/4" TO BRANCH CIRCUIT SHOWN ON THE PLAN. (ONE EXTRA HOT FOR EMERGENCY LIGHTING FIXTURES)

- LIGHTING GENERAL NOTES**
- PROVIDE PULL STRINGS IN ALL EMPTY CONDUITS.
 - ALL JUNCTION BOXES, CONDUITS, AND WIRES SHALL BE SIZED PER NEC.
 - CONNECT ALL EXIT LIGHTS AHEAD OF ANY LOCAL OR AUTOMATIC SWITCHING DEVICE.
 - PROVIDE A CONSTANT HOT FROM PANEL BOARD DIRECTLY TO ALL EMERGENCY BATTERY PACKS/BALLASTS IN EMERGENCY LIGHTING FIXTURES AND EXIT SIGNS. EMERGENCY LIGHTING FIXTURES SHALL TURN ON TO FULL BRIGHTNESS IN CASE OF POWER LOSS.
 - REFER TO ARCHITECTURAL DRAWINGS FOR EXACT LOCATION & MOUNTING HEIGHTS OF ALL LIGHTING FIXTURES AND DEVICES SHOWN ON THIS DRAWING.
 - ALL HOME RUNS SHALL BE 2#10 + 1#10 GND. IN 3/4" C. UNLESS OTHERWISE NOTED.
 - REFER TO SHEET E3.01 FOR SYMBOLS, SPECIFICATIONS, ABBREVIATIONS, AND LIGHTING FIXTURE SCHEDULE.
 - ALL DEVICES AND EQUIPMENT OUTSIDE THE SCOPE OF WORK ARE EXISTING TO REMAIN U.O.N.
 - CIRCUIT NUMBERS INDICATED ARE FOR DESIGN PURPOSES ONLY. CONTRACTOR SHALL COORDINATE ACTUAL CIRCUIT NUMBERS AT THE TIME OF INSTALLATION AND TO PROVIDE AN ACCURATELY TYPED PANEL BOARD SCHEDULE FOR EACH PANEL BOARD.
 - ELECTRICAL CONTRACTOR SHALL NOTIFY THE ENGINEER OF ANY PROBLEMS PERTAINING TO CIRCUIT AVAILABILITY OR LOAD CAPACITY PRIOR TO INSTALLATION.
 - ALL EXTERIOR LUMINAIRES AND ELECTRICAL DEVICES SHALL BE LISTED AS WEATHERPROOF TYPE.
 - ALL NEW OCCUPANCY SENSORS SHALL BE DUAL-TECHNOLOGY WITH 1000 SQFT COVERAGE AT 360 DEGREES U.O.N. ON THE DRAWING. COORDINATE EXACT LOCATION AND REQUIREMENTS OF ALL OCCUPANCY SENSORS SHOWN ON THIS DRAWING WITH MANUFACTURER REPRESENTATIVE PRIOR TO COMMENCEMENT OF WORK. CONTRACTOR TO PROVIDE POWER PACKS AS REQUIRED.
 - CONTRACTOR SHALL CONFIRM COMPATIBILITY OF ALL LIGHTING CONTROL SYSTEM DEVICES/SWITCHES WITH LIGHTING FIXTURES AND BALLASTS/DRIVERS PRIOR TO SUBMITTAL.

A LICENSED FIRE ALARM PLANNING SUPERINTENDENT CERTIFIED TO A MINIMUM LEVEL 3, IN THE SUBFIELD OF FIRE ALARM SYSTEMS THROUGH THE NATIONAL INSTITUTE FOR CERTIFICATION IN ENGINEERING TECHNOLOGIES (NICET), SHALL PROVIDE PLANS AND CALCULATIONS FOR A MANUAL AND AUTOMATIC FIRE DETECTION AND ALARM SYSTEM TO COMPLY WITH THE BUILDING SPACE LAYOUT, BUILDING OCCUPANCY, NFPA 72, LOCAL AND STATE CODE REQUIREMENTS, AND THE FIRE ALARM AND DETECTION SYSTEM SPECIFICATIONS.



1 ELECTRICAL LIGHTING FLOOR PLAN
SCALE: 1/8" = 1'-0"

KMESALASO'BRIEN
Houston | Dallas/Ft. Worth | Baton Rouge
10930 W. Sam Houston Parkway N., Suite 900
Houston, Texas 77064
281.664.1900 | Registration No. F-4111
KMES Project No. 03011009

WINDLE + VOLPE
ARCHITECTS
7650 MAIN FLDG. SUITE 200
HOUSTON, TEXAS 77065
PH 713-951-1590

Bradley Kalmans
BRADLEY KALMANS
PROFESSIONAL ENGINEER
01/20/15

SHOE DEPT. ENCORE
CROSSROADS MALL
GREENVILLE, TEXAS
GREENVILLE PROPERTIES LTD.
GREENVILLE, TEXAS

DATE	1/20/2015	PS
PROJECT NO.	08-13-06	
DRAWN BY		

ELECTRICAL LIGHTING PLAN
E1.01