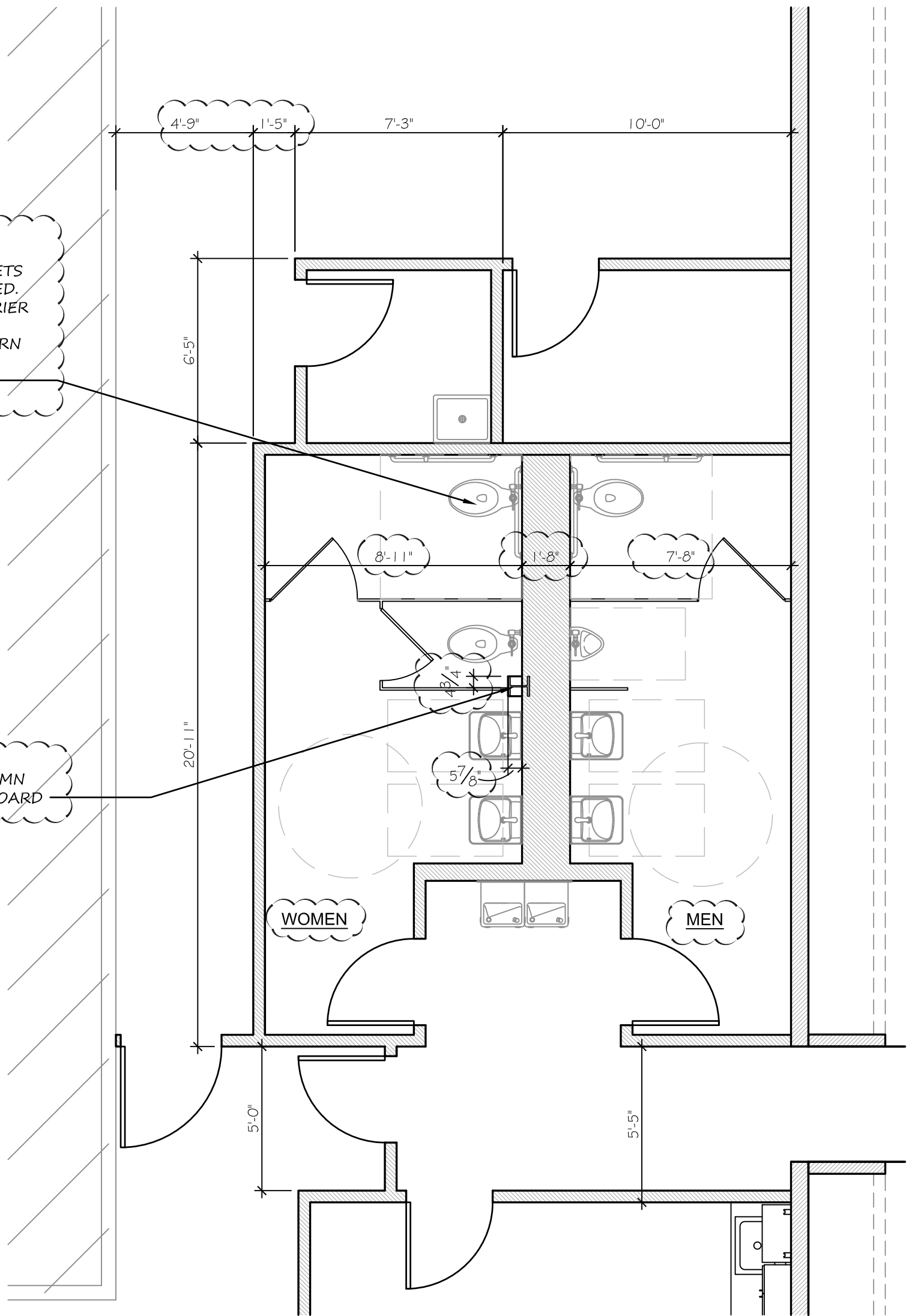


REVISE WATER CLOSETS  
TO BE WALL MOUNTED.  
GC TO PROVIDE CARRIER  
FOR FUTURE  
INSTALLATION OF ZURN  
MODEL #5615 (BY  
TENANT), TYPICAL

WRAP EXISTING COLUMN  
WITH 5/8" GYPSUM BOARD



1 | RESTROOMS AT BEALLS  
A-SK-10 | SCALE: 1/4" = 1'-0"