

COLD WATER PIPING  
 HOT WATER PIPING  
 SAN SEWER  
 SAN VENT

COPPER TYPE "L" (TYPE "K" IN SLAB)  
 COPPER TYPE "L"  
 CAST IRON  
 CAST IRON

NOTE: PLUMBING FIXTURES MUST MEET WATER SAVING STANDARDS AS REQUIRED BY ANS: CITY CODE AND SPECIFICATIONS.

MINIMUM PIPE SIZES:  
 WATER CLOSET  
 LAVATORY  
 FLOOR DRAIN  
 MOP SINK  
 WATER COOLER  
 URINAL

2" VENT, 4" WASTE, 1" COLD WATER  
 1-1/2" VENT, 2" WASTE, 1/2" HOT & COLD WATER  
 1-1/2" VENT, 3" WASTE, 3/8" COLD WATER  
 1-1/2" VENT, 3" WASTE, 1/2" HOT & COLD WATER  
 1-1/2" VENT, 1-1/2" WASTE, 1/2" COLD WATER

COLD WATER DOMESTIC (CW)  
 HOT WATER 90 DEG F (HW)  
 GPM GALLON PER MINUTE  
 KW KILLOWATT  
 SS SANITARY SEWER (SS)  
 SANITARY VENT (SV)  
 TYP TYPICAL  
 UG UNDERGROUND  
 VALVE

**PLUMBING FIXTURE SPECIFICATIONS**

WC-1 TOILET - MANUAL FLOOR MOUNT FLUSH VALVE (ADA COMPLIANT)  
 MANUFACTURER: ZURN - PROVIDED BY BRADLEY  
 PRODUCT: #25660  
 COLOR: WHITE  
 SEAT: ZURN #Z5955SS-EL WHITE TOILET SEAT  
 FLUSH VALVE: ZURN #Z600AV-HET (LOW CONSUMPTION) REFER TO ENLARGED PLAN FOR LEVER LOCATION

UR-1 URINAL - MANUAL WALL MOUNT FLUSH VALVE (ADA COMPLIANT)  
 MANUFACTURER: ZURN - PROVIDED BY BRADLEY  
 PRODUCT: #25790  
 COLOR: WHITE  
 FLUSH VALVE: ZURN #Z6003AV-ULF (LOW CONSUMPTION, REFER TO ENLARGED PLAN FOR LEVER LOCATION)

L-1 LAVATORY  
 MANUFACTURER: ZURN Z5361  
 ADA TRAP, STOP AND SUPPLY PROTECTORS, THERMOSTATIC MIXING VALVE (TMV-1), 6VDC PLUG-IN POWER CONVERTER (ACA), COORDINATE WATER/WASTE AND ELECTRICAL REQUIREMENTS WITH MANUFACTURER'S DIAGRAM PRIOR TO FABRICATION/INSTALLATION.

SK-1 BREAKROOM SINK / FAUCET  
 SINK: ELKAY #GECR2521 SERIES (ADA COMPLIANT) - PROVIDED BY BRADLEY (SINGLE BOWL, SELF RIMMING, 3 HOLE, STAINLESS STEEL)  
 DIMENSIONS: 25"W X 21 1/4"D X 5 3/8"H  
 FAUCET: ZURN #Z7870C-XL - PROVIDED BY BRADLEY (ADA COMPLIANT) (SINGLE HANDLE, LESS SPRAY, IPS CONNECTIONS)  
 STRAINER: ELKAY #LK-18 - PROVIDED BY BRADLEY (CHROME PLATED, PERFORATED)  
 NOTE: ALL HIDDEN PLUMBING COMPONENTS TO BE SUPPLIED BY INSTALLER.

EDF-1 WATER COOLERS - TWO STATION WALL MOUNT ADA COMPLIANT  
 MANUFACTURER: OASIS BARRIER-FREE  
 PRODUCT: VERSA COOLER #PPACSL  
 FINISH: STAINLESS STEEL WITH TEXTURED GRAY LOWER SHROUD  
 ACCESSORIES: CANE APRON OASIS #035174

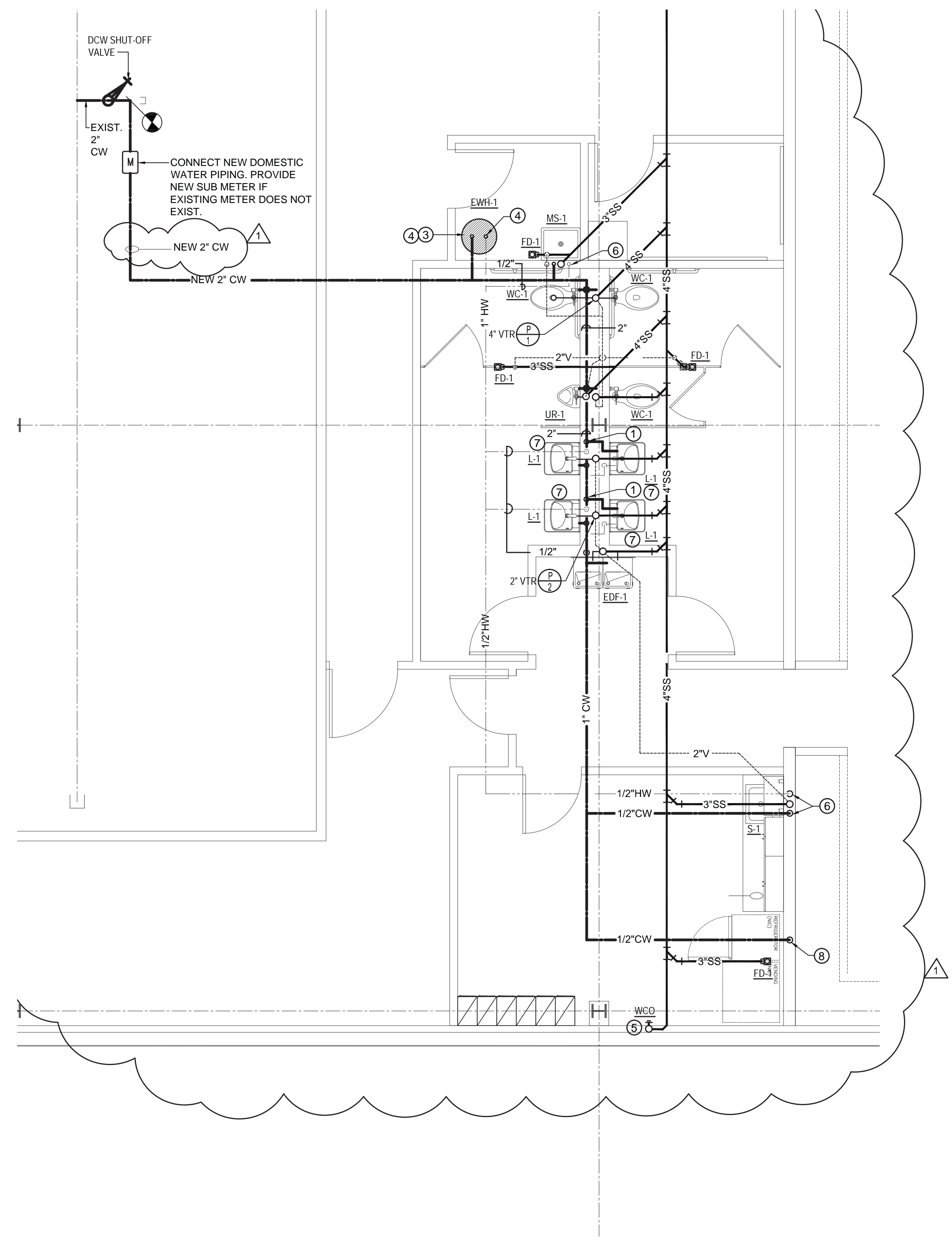
MS-1 MOP SINK  
 MANUFACTURER: ZURN (SINK & FAUCET) - PROVIDED BY BRADLEY  
 PRODUCT: #Z1996-24-SF MOP SERVICE BASIN CW SERVICE FAUCET  
 FAUCET: #Z1996-SF SERVICE SINK FAUCET  
 COLOR: STANDARD PVC W/ SS DOME STRAINER/LINT BASKET  
 SIZE: 24" X 24" X 10"

FD-1 FLOOR DRAIN  
 MANUFACTURER: ZURN Z418N1  
 PRODUCT: ROUND CAST IRON BODY WITH FLASHING COLLAR, 6" ROUND NICKEL/BRONZE ADJUSTABLE STRAINER HEAD WITH SECURED SQUARE HOLED GRATE, BOTTOM WASTE OUTLET AND TRAP PRIMER CONNECTION. PROVIDE TRAP PRIMER CONNECTION.

TP-1 ELECTRONIC TRAP PRIMER, PANEL MOUNT IN RESTROOM OR ABOVE ACCESSIBLE CEILING  
 MANUFACTURER: PRECISION PLUMBING PRODUCTS MIFAB MR-500.  
 PROVIDE 1/2" CONNECTION TO CW.

EWH-1 ELECTRIC CEILING MOUNTED 20 GALLON WATER HEATER  
 MANUFACTURER: STATE WATER HEATERS #PCE 20 10MSA, 9KW 480V 3PH  
 PRODUCT: HEAVY DUTY COMMERCIAL ELECTRIC WATER HEATER

TMV - THERMOSTATIC MIXING VALVE PROVIDE AT ALL PUBLIC POINT OF USE HAND WASHING SINKS AND LAVATORIES. SET TEMPERATURE TO 105 DEGREES F.



1 PLUMBING FIXTURES SPECIFICATIONS  
 NOT TO SCALE

2 ENLARGED PLUMBING FLOOR PLAN  
 1/4" = 1'-0"

- PLUMBING KEYED NOTES:
- ① CW DOWN IN WALL FROM CEILING TO FIXTURE(S).
  - ② SS DOWN TO SLAB AND V UP IN WALL TO CEILING FROM FIXTURES.
  - ③ FOR PIPING DETAILS AT WATER HEATER, RE: DETAIL.
  - ④ 3/4" CW DOWN TO WATER HEATER AND 3/4" HW UP FROM WATER HEATER TO ABOVE CEILING.
  - ⑤ SANITARY SEWER UP IN WALL TO WCO.
  - ⑥ CW & HW DOWN IN WALL TO FIXTURE(S).
  - ⑦ PROVIDE THIS LAVATORY WITH ADA PROTECTION: INSULATE TRAP, ARM, ANGLES, STOPS, ETC. WITH INSULATING WRAP BY TRUEBERG, BROCAR, OR PLUMBEX.
  - ⑧ 1/2" CW IN WALL TO REFRIGERATOR VALVE BOX.
  - ⑨ 3"V IN SLAB.
  - ⑩ 4"SS DOWN IN SLAB TO SAN SEWER.
  - ⑪ 3"V UP FROM SLAB IN WALL OT ABOVE CEILING.

SYMBOL	DESCRIPTION	CONNECTION SIZE				REMARKS
		WASTE	VENT	C.W.	H.W.	
WC-1	TOILET - MANUAL (ADA COMPLIANT)	4"	2"	1"	—	
L-1	ONE PIECE DUAL HEIGHT - ADA COMPLIANT (SENSOR)	2"	1-1/2"	1/2"	1/2"	
EDF-1	TWO STATION WALL MOUNTED FOUNTAIN (ADA COMPLIANT)	2"	1-1/2"	1/2"	—	
MS-1	MOP SINK	2"	1-1/2"	1/2"	1/2"	
SK-1	STAINLESS STEEL SINK, ADA COMPLIANT	2"	1-1/2"	1/2"	1/2"	
UR-1	URINAL	2"	1-1/2"	3/4"	—	

3 PLUMBING KEYED NOTES  
 NOT TO SCALE

4 PLUMBING FIXTURE SCHEDULE / CONNECTION SCHEDULE  
 NOT TO SCALE