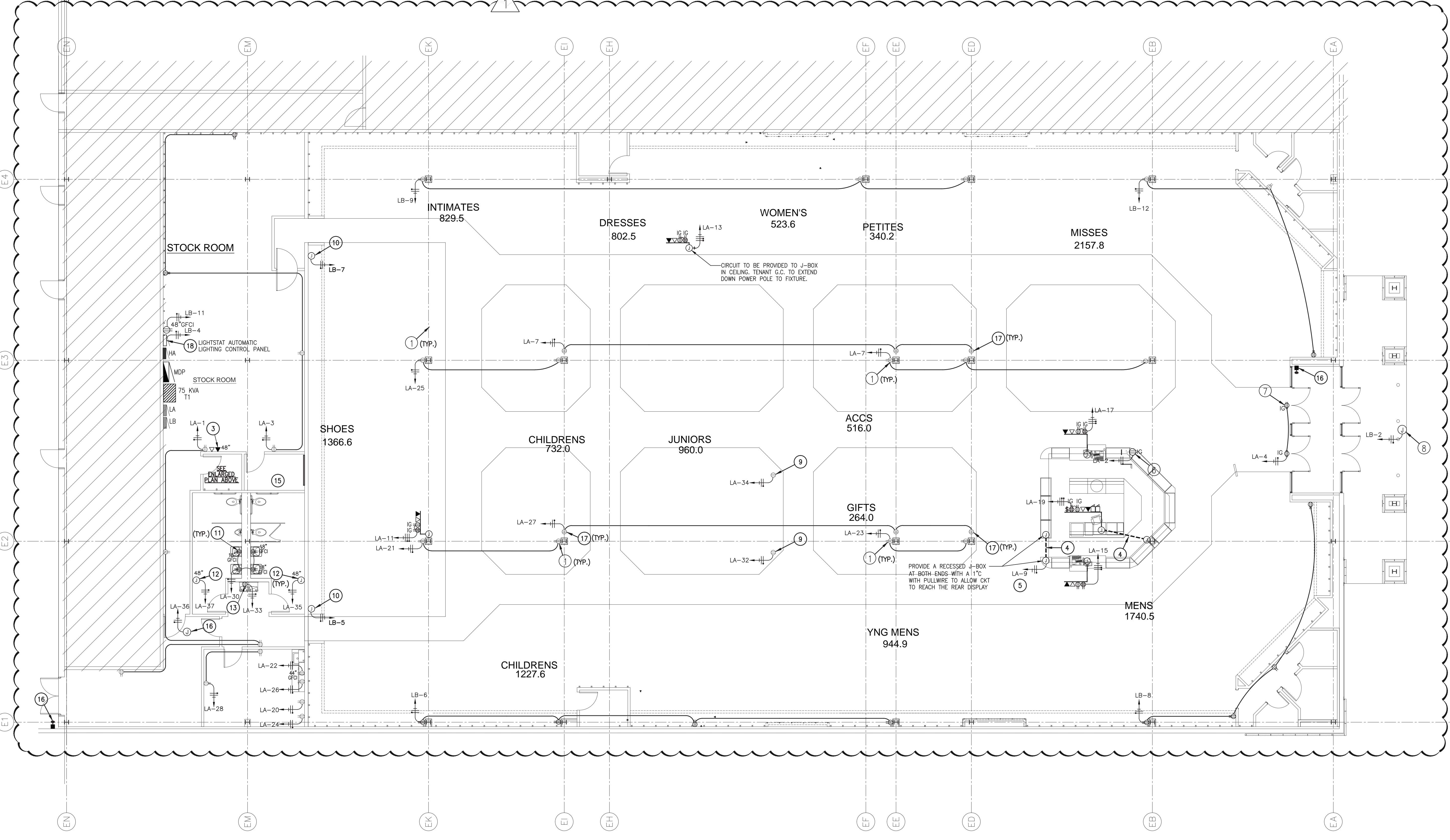
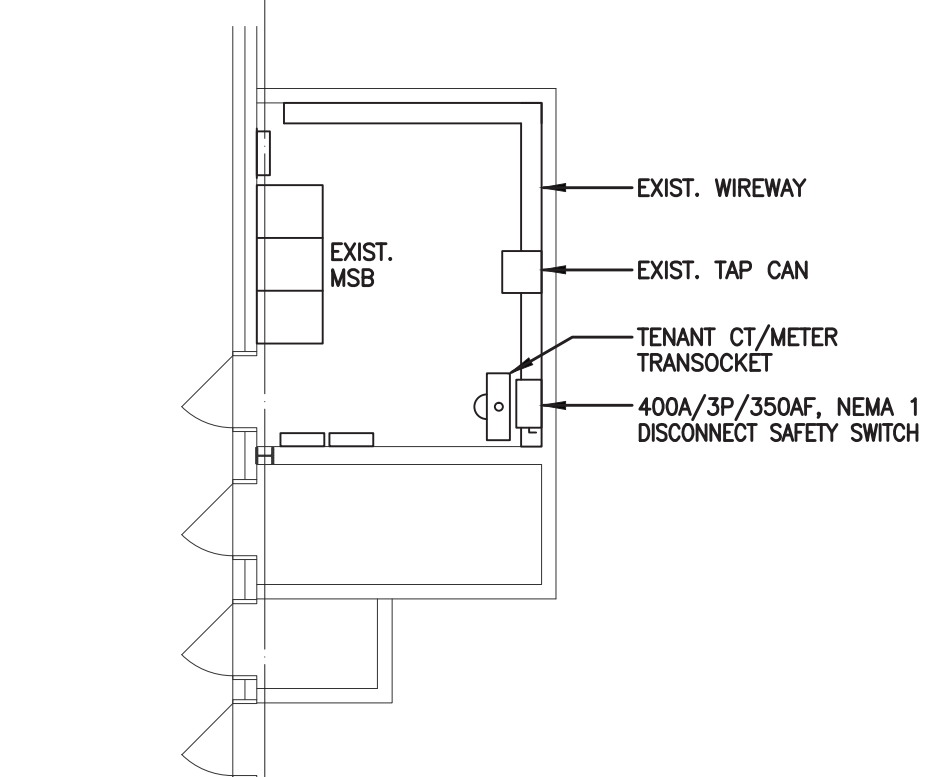
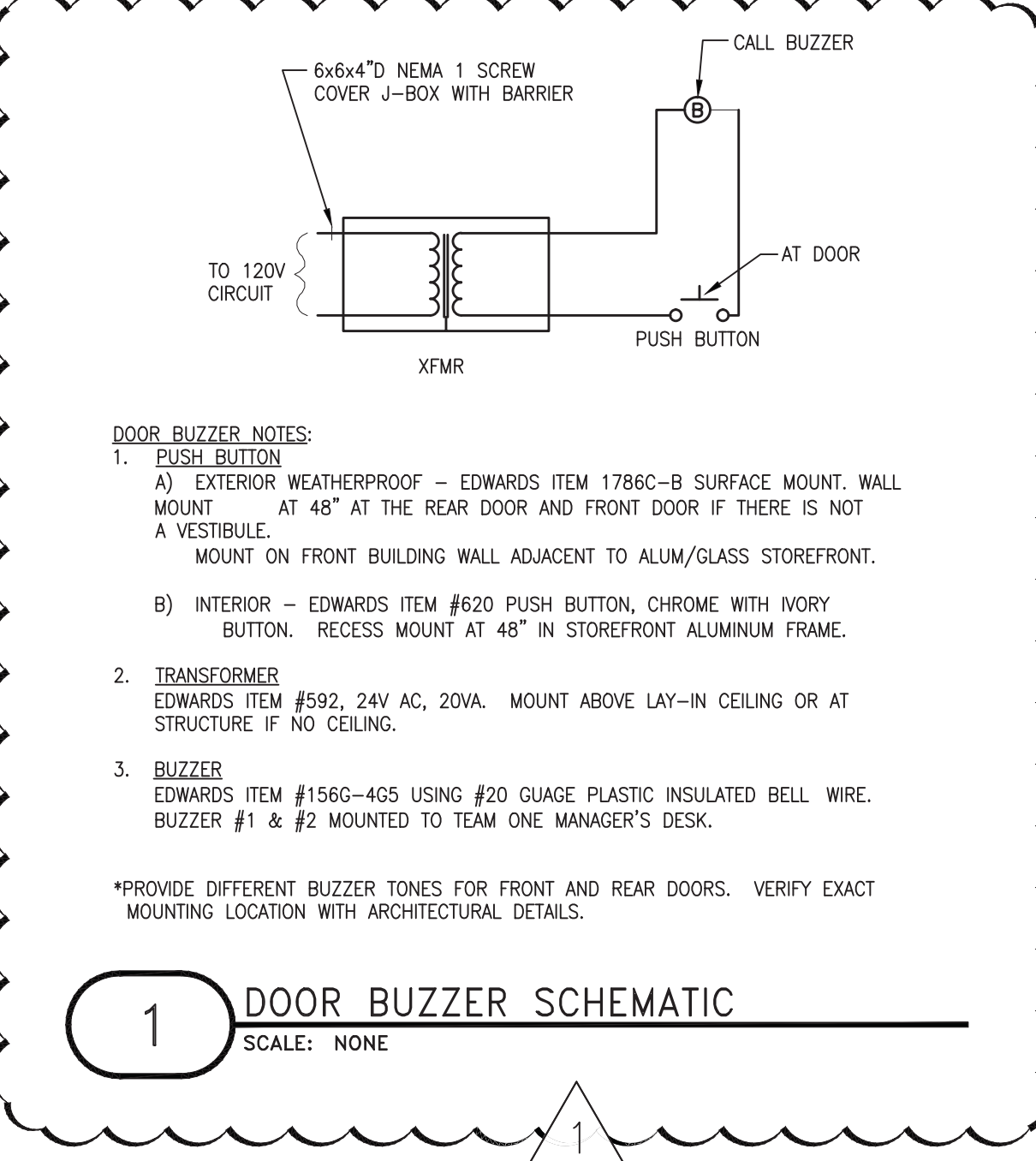
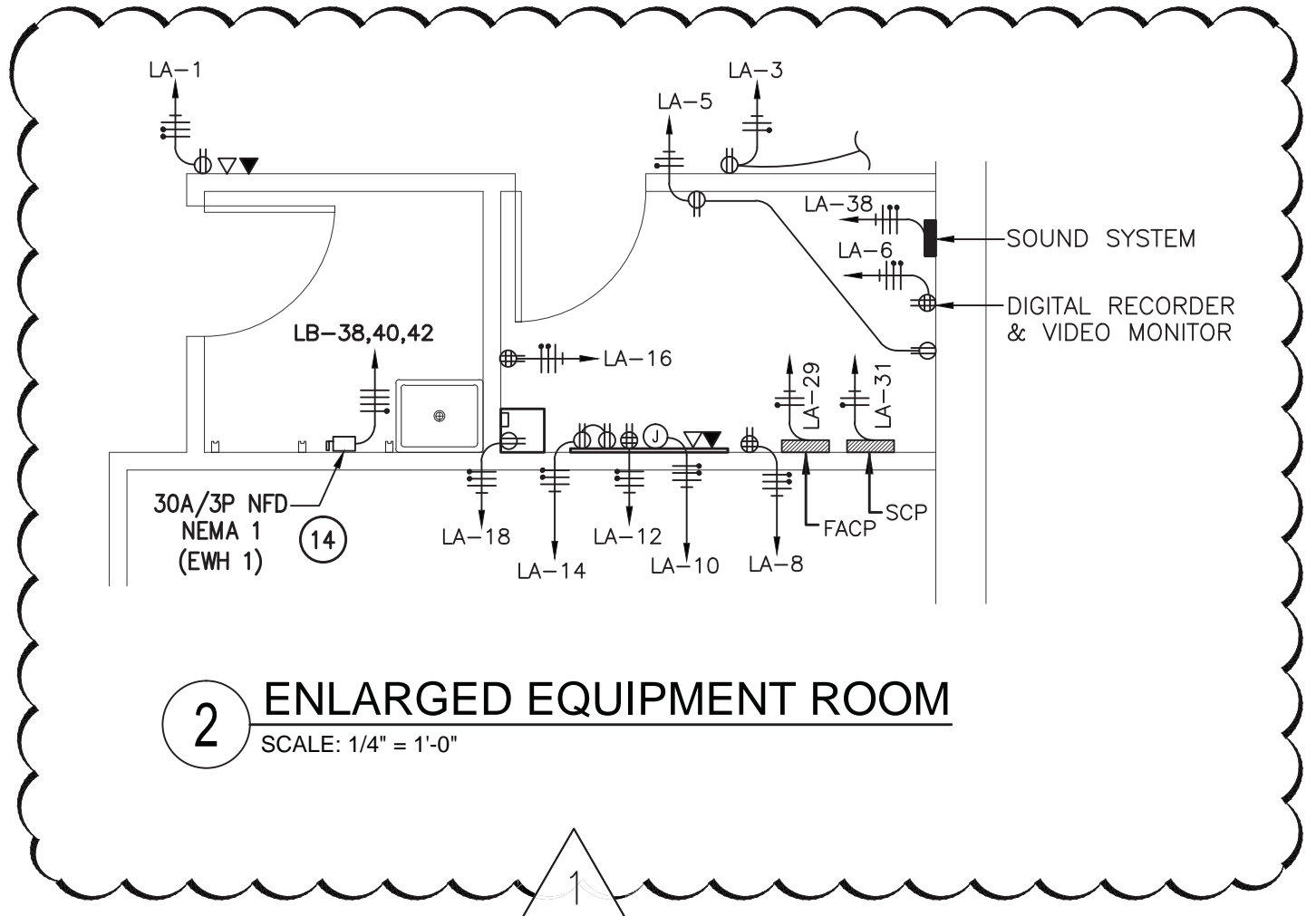


POWER PLAN KEYED NOTES

- PROVIDE CONVENIENCE RECEPTACLES MOUNTED ON BACK OF COLUMN 18" ABOVE FINISHED FLOOR FACING AWAY FROM STREET
- NOT USED.
- INSTALL WALL BOX AT 48" AFF WITH (1)-3/4" EMPTY CONDUIT WITH PULL STRING UP WALL TO 6" ABOVE ACCESSIBLE CEILING WITH BUSHING FOR CREDIT TELEPHONE OUTLET.
- INSTALL (2)-1" EMPTY CONDUIT WITH PULL STRING FROM MANAGER'S STATION DOWN UNDER FLOOR UP THROUGH COLUMN FURRING TO 6" ABOVE ACCESSIBLE CEILING WITH BUSHING FOR TECHNOLOGY OUTLETS. INSTALL FLOOR JUNCTION BOX AS REQUIRED. TRENCHING AND BACKFILLING OF SLAB BY GENERAL CONTRACTOR. INSTALL WIREMOLD AS REQUIRED.
- INSTALL POWER FEEDER THROUGH UNDER FLOOR UP TO DISPLAY CASES LIGHTS AND MAKE CONNECTION AS REQUIRED. DISPLAY CASES LIGHTS CIRCUIT LA-9 THROUGH LIGHTSTAT SALES LIGHTING CONTACTOR. TRENCHING AND BACKFILLING BY GENERAL CONTRACTOR FIELD COORDINATE EXACT CONNECTION AND REQUIREMENTS WITH MILLWORK PRIOR TO MAKE FINAL INSTALLATION.
- INSTALL DUPLEX RECEPTACLE MOUNTED 12" ABOVE CEILING WITH POWER CIRCUIT AS INDICATED FOR POWER TO STREET ENTRANCE PUBLIC VIEW MONITOR BY TENANT.
- INSTALL DUPLEX RECEPTACLES MOUNTED 12" ABOVE CEILING WITH POWER CIRCUIT AS INDICATED FOR POWER TO ENTRANCE SECURITY PEDESTALS INSTALLED BY TENANT. PROVIDE PULL STRINGS FROM POWER OUTLET DOWN THE INSIDE OF THE WALL AND REQUIREMENTS WITH OWNER PRIOR TO MAKE FINAL INSTALLATION.
- INSTALL CIRCUIT AND JUNCTION BOX FOR TENANT'S EXTERIOR SIGNAGE ON STOREFRONT FASCIA. FIELD COORDINATE EXACT LOCATION AND REQUIREMENTS WITH SIGNAGE INSTALLER PRIOR TO MAKE FINAL INSTALLATION. EXTERIOR SIGNAGE POWER CIRCUIT THROUGH LIGHTSTAT EXTERIOR SIGNAGE CONTACTOR.
- INSTALL RECESSED CEILING MOUNTED DUPLEX RECEPTACLES AS SHOWN. PROVIDE WHITE DEVICES AND COVERPLATES. CONFIRM EXACT LOCATION AND REQUIREMENTS WITH OWNER PRIOR TO MAKE FINAL INSTALLATION.
- INSTALL RECESSED WALL MOUNTED JUNCTION BOXES AND POWER CIRCUIT AS INDICATED FOR POWER OF SHOE CASES LIGHTS. CIRCUIT THROUGH LIGHTSTAT WORK LIGHTING CONTACTOR. FIELD COORDINATE EXACT INSTALLATION REQUIREMENTS.
- INSTALL DUPLEX RECEPTACLE AT 18" AFF FOR LAVATORY FAUCET-SENSOR HANDS FREE. FIELD COORDINATE WITH PLUMBING CONTRACTOR EXACT REQUIREMENTS.
- INSTALL JUNCTION BOX AT RECOMMENDED MOUNTING HEIGHT AND POWER CIRCUIT FOR HAND DRYER FURNISHED AND INSTALLED BY OTHERS.
- LOCATE RECEPTACLE BEHIND ELECTRIC WATER COOLER ENCLOSURE AT 26" AFF. FIELD CONFIRM EXACT LOCATION WITH PLUMBING CONTRACTOR.
- CONFIRM EXACT ELECTRICAL REQUIREMENTS AND LOCATION OF ELECTRIC WATER HEATER FURNISHED AND INSTALLED BY PLUMBING CONTRACTOR.
- REFER TO THIS SHEET FOR ENLARGED EQUIPMENT ROOM. INSTALL #6 GROUND CONDUCTOR FROM TELEPHONE BOARD TO EXISTING ELECTRICAL ROOM "A" AND CONNECT TO EXISTING GROUNDING SYSTEM. INSTALL (2)-3" EMPTY CONDUIT WITH PULL STRINGS FROM TELEPHONE BOARD IN EQUIPMENT ROOM UP WALL TO ABOVE CEILING DOWN TO EXISTING TELEPHONE ROOM FOR TELEPHONE/TECHNOLOGY SERVICE. FIELD COORDINATE FINAL LOCATIONS AND MOUNTING HEIGHT OF ALL ELECTRICAL DEVICES AS SHOWN IN EQUIPMENT ROOM WITH ARCHITECTURAL PLANS, DETAILS AND TECHNOLOGY SYSTEM INSTALLER PRIOR TO MAKE FINAL INSTALLATION.
- INSTALL JUNCTION BOX WITH POWER CIRCUIT FOR PUSH BUTTON AND BUZZER SYSTEM FURNISHED BY GENERAL CONTRACTOR AND INSTALLED BY ELECTRICAL CONTRACTOR. INSTALL WALL BOXES AND COMPLETE CONDUIT SYSTEM. CONFIRM EXACT LOCATION AND REQUIREMENTS OF PUSH BUTTON AND BUZZER SYSTEM WITH ARCHITECT AND/OR GENERAL CONTRACTOR PRIOR TO SUBMIT BIDDING.
- DUPLEX CONVENIENCE RECEPTACLES MOUNTED ON BACK SIDE OF COLUMN 12" BELOW CEILING FACING AWAY FROM STREET.
- FURNISH AND INSTALL LIGHTSTAT AUTOMATIC LIGHTING CONTROL SYSTEM PER REQUIREMENTS AS SHOWN ON DWG SHEETS. CONTACT MELISSA HUBBARD/TONY BRONCKHOFF OF LIGHTSTAT AT 1-800-292-2444 EXT. 224 FOR QUOTATION AND REQUIREMENTS PRIOR TO SUBMIT BIDDING.

- DUPLEX OUTLETS MOUNTED ON BACK SIDE OF COLUMN ONLY. (1) +18" A.F.F. (1) +12" BELOW C.L.G. (SIDE OPPOSITE FROM STREET ENTRANCE)



ELECTRICAL SYMBOLS

| | |
|--|----------------------------------------------------|
| | REFERENCE TO DETAIL AND SHEET NUMBER |
| | EQUIPMENT FURNISHED BY DIVISION 16 |
| | EQUIPMENT FURNISHED BY OTHER DIVISIONS |
| | EXISTING SURFACE MOUNTED PANEL |
| | NEW SURFACE MOUNTED PANEL |
| | FLUORESCENT LIGHT FIXTURE |
| | FLUORESCENT NIGHT LIGHT FIXTURE |
| | EMERGENCY LIGHT WITH BATTERY BACKUP |
| | CEILING MOUNTED LIGHT FIXTURE |
| | WALL MOUNTED LIGHT FIXTURE |
| | CEILING MOUNTED EXIT LIGHT FIXTURE |
| | WALL MOUNTED EXIT LIGHT FIXTURE |
| | NEUTRAL CONDUCTOR |
| | PHASE CONDUCTOR |
| | GROUND CONDUCTOR |
| | GROUND & IG CONDUCTORS |
| | SWITCH LEG AND/OR BRANCH CIRCUIT |
| | BRANCH CIRCUIT |
| | HOME RUN TO PANELBOARD |
| | SWITCH, 48" AFF |
| | THREE-WAY SWITCH, 48" AFF |
| | MOTOR RATED SWITCH |
| | SWITCH WITH PILOT LIGHT, 48" AFF |
| | OCCUPANCY SENSOR SWITCH, 48" AFF |
| | THREE-WAY OCCUPANCY SENSOR SWITCH, 48" AFF |
| | CEILING MOUNTED EMS MOTION SENSOR SWITCH |
| | WALL MOUNTED EMS OUTSIDE LIGHT SENSOR, 108" AFF |
| | MOTOR |
| | DISCONNECT SAFETY SWITCH |
| | ISOLATED GROUND DUPLEX RECEPTACLE, 18" AFF |
| | DUPLEX RECEPTACLE WITH MOUNTING HEIGHT |
| | WEATHER PROOF DUPLEX RECEPTACLE |
| | GROUND FAULT CIRCUIT INTERRUPTER DUPLEX RECEPTACLE |
| | ISOLATED GROUND DOUBLE DUPLEX RECEPTACLE, 18" AFF |
| | DOUBLE DUPLEX RECEPTACLE WITH MOUNTING HEIGHT |
| | FLOOR MOUNTED DUPLEX RECEPTACLE |
| | CEILING MOUNTED DUPLEX RECEPTACLE |
| | JUNCTION BOX |
| | TELEPHONE/VOICE OUTLET, 18" AFF |
| | DATA OUTLET, 18" AFF |
| | PUSH BUTTON DEVICE, 48" AFF. |
| | DOOR BUZZER DEVICE |
| | OPEN-CLOSE BUTTON DEVICE - LIGHTSTAT SYSTEM |
| | THERMOSTAT, NUMBER DENOTES AHU SERVED |
| | REMOTE ROOM/ZONE SENSOR NUMBER DENOTES AHU SERVED |
| | SUPPLY AIR SENSOR |

ABBREVIATIONS

| | |
|-----|------------------------------------|
| A | AMPERES |
| AIC | AMPS INTERRUPTING CURRENT |
| AFF | ABOVE FINISHED FLOOR |
| BMS | BUILDING MANAGEMENT SYSTEM |
| C | CONDUIT |
| CU | COPPER |
| CB | CIRCUIT BREAKER |
| FD | FUSED DISCONNECT SAFETY SWITCH |
| GND | GROUND CONDUCTOR |
| IG | ISOLATED GROUND |
| KVA | KILOVOLT-AMPS |
| MLO | MAIN LUGS ONLY |
| MCB | MAIN CIRCUIT BREAKER |
| NEC | NATIONAL ELECTRICAL CODE |
| NFD | NON-FUSED DISCONNECT SAFETY SWITCH |
| ø | PHASE |
| V | VOLTS |
| WP | WEATHERPROOF |