

| | |
|-------------|-----------|
| DATE | 1/17/2015 |
| PROJECT NO. | 8-12-05 |
| DRAWN BY | AEP |

ELECTRICAL LIGHTING PLAN, SCHEDULE & NOTES

E1.1

LIGHTING PLAN KEYED NOTES

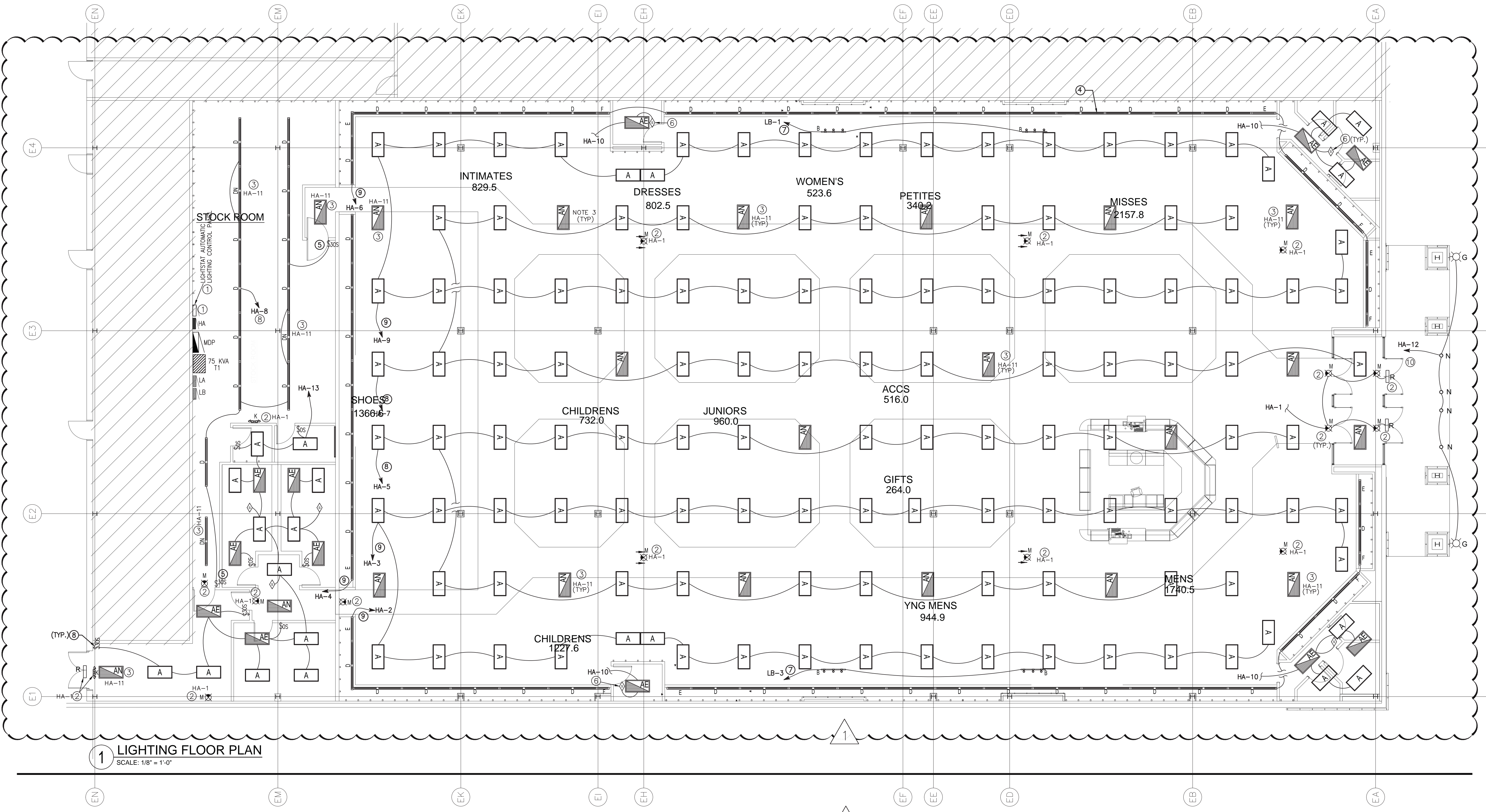
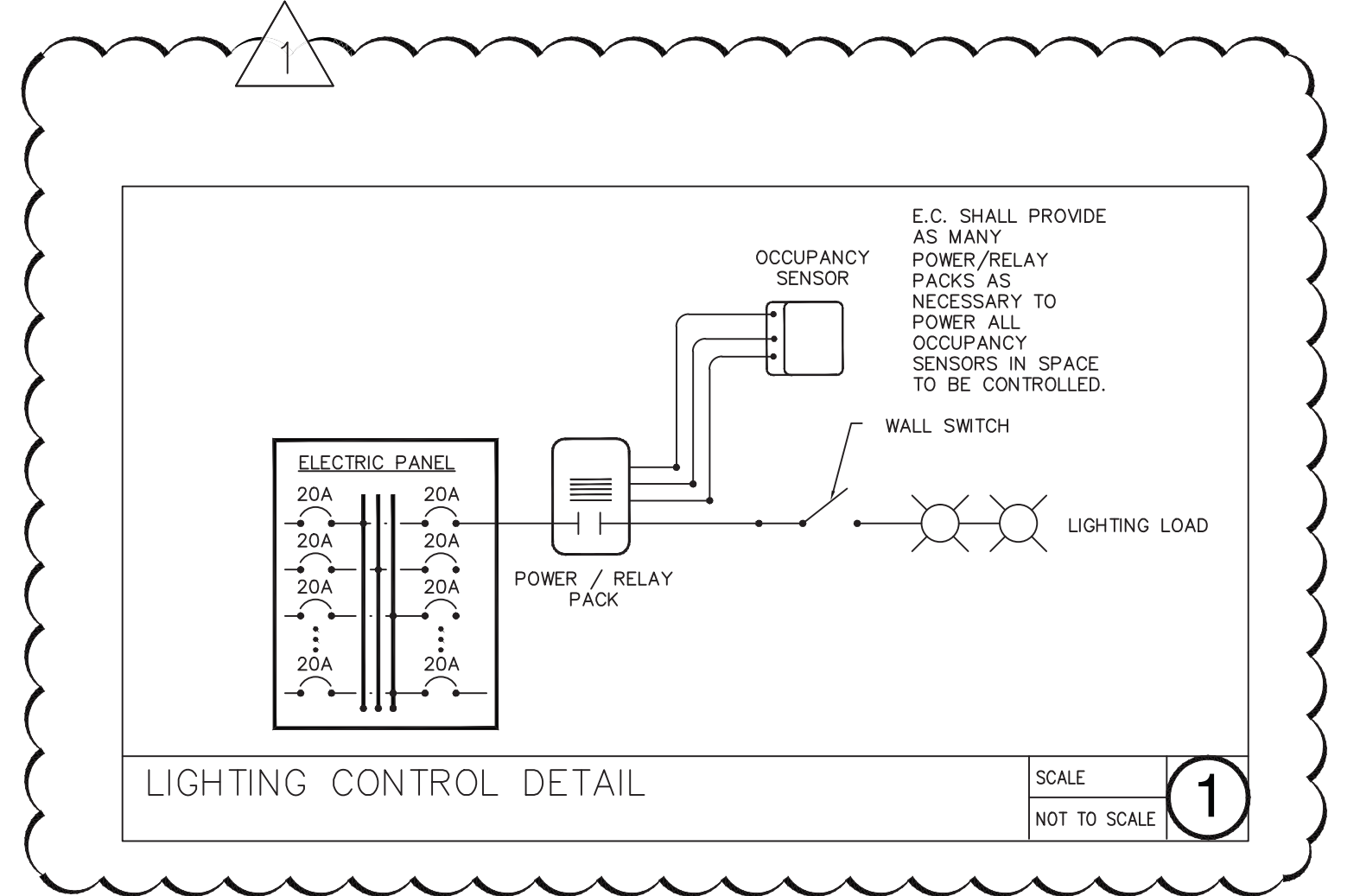
- PROVIDE AUTOMATIC LIGHTING CONTROL OF INTERIOR AND EXTERIOR LIGHTING. REFER TO SHEET EM-1.2 AND EM 2.1 FOR AUTOMATIC LIGHTING CONTROL REQUIREMENTS. EXTEND ALL LIGHTING CIRCUITS FROM LIGHTING PANEL TO LIGHTSTAT CONTACTORS AS REQUIRED.
- CONNECT ALL EXIT SIGNS AND EMERGENCY LIGHTS TO CIRCUIT HA-1. ALL EXIT SIGNS AND EMERGENCY LIGHTS ARE NOT CONTROLLED BY LIGHTSTAT AUTOMATIC LIGHTING CONTROL PANEL.
- CONNECT ALL NIGHT LIGHT FIXTURES TO CIRCUIT HA-11 AND HARDWIRED/UNSWITCHED. ALL NIGHT LIGHT FIXTURES ARE NOT CONTROLLED BY LIGHTSTAT AUTOMATIC LIGHTING CONTROL PANEL.
- REFER TO ARCHITECTURAL DRAWINGS FOR EXACT LIGHT FIXTURE QUANTITIES AND LOCATIONS AT FEATURE WALLS.
- SURFACE MOUNT TYPE D FIXTURES SHOWN IN ROOM INDICATED. FIELD VERIFY OCCUPANCY SENSOR LOCATION PRIOR TO MAKE FINAL INSTALLATION.
- COORDINATE AUTOMATIC SHUT-OFF-TIME OUT PERIOD WITH OWNER. FIELD VERIFY OCCUPANCY SENSOR SETTINGS PER OWNER REQUIREMENTS AND PROVIDE TEST REPORT WITH ACTUAL SETTINGS OF ALL OCCUPANCY SENSORS WITH ROOM LOCATIONS FOR OWNER'S RECORDS AND MAINTENANCE MAINTENANCE PURPOSES.
- CONNECT TYPE 'B' FLOOD TRACK LIGHTS TO PANEL LB, CKTS 1&3 VIA LIGHTSTAT 120V "SALES" CONTACTOR LIGHTSTAT.
- WORK CIRCUIT THROUGH LIGHTSTAT LIGHTING CONTACTOR.
- SALES CIRCUIT THROUGH LIGHTSTAT LIGHTING CONTACTOR.
- OUTSIDE SITE/EXTERIOR/SECURITY CIRCUIT THROUGH LIGHTSTAT LIGHTING CONTACTOR.

LIGHTING PLAN GENERAL NOTES

- ALL MATERIALS AND WORKMANSHIP SHALL CONFORM TO BASE BUILDING SPECIFICATIONS, LOCAL CODES AND ORDINANCES, AND INDUSTRY STANDARDS.
- CONTRACTOR MUST MARK ALL SWITCHES, THERMOSTATS, AND ADA STROBE LOCATION IN THE FIELD FOR REVIEW AND APPROVAL BY THE ARCHITECT BEFORE INSTALLATION. FAILURE TO DO SO WILL RESULT IN THE CONTRACTOR RELOCATING SUCH ITEMS WITHOUT ADDED EXPENSE TO THE OWNER, TENANT OR ARCHITECT.
- THE ARCHITECTURAL LIGHTING PLANS ARE TO BE USED FOR EXACT HEIGHTS AND LOCATIONS OF INTERIOR AND EXTERIOR LIGHTING FIXTURES. THE ELECTRICAL LIGHTING PLANS ARE TO BE USED FOR CIRCUITING AND POWER REQUIREMENTS. NOTIFY THE ARCHITECT OF ANY DISCREPANCIES BETWEEN THE ELECTRICAL AND ARCHITECTURAL LIGHTING PLANS AND OBTAIN CLARIFICATION BEFORE COMMENCING CONSTRUCTION.
- ALL OCCUPANCY SENSORS BY LIGHTSTAT. MOUNT ON CEILING WITH JUNCTION BOX, TYP.
- ROUTE CONDUIT AND CONDUCTORS TO VALENCE FIXTURES ALONG INSIDE OF VALENCE AND WITHIN WING WALLS. CONDUITS SHALL NOT BE SEEN FROM SALES FLOOR.
- REFER TO POWER PLAN FOR FRONT SIGNAGE LIGHTING INFORMATION.
- REFER TO POWER PLAN FOR SHOE SALES LIGHTING INFORMATION.
- PROVIDE ADDITIONAL HOT CONDUCTOR CONNECTED DIRECTLY FROM CIRCUIT AND PANEL ASSOCIATED WITH LIGHT FIXTURES PROVIDED WITH EMERGENCY BALLAST. CIRCUIT CONDUCTOR MUST BE UNSWITCHED AND TIED IN PRIOR TO LIGHTING CONTRACTOR TERMINATIONS TO PREVENT ACTIVATION FROM LIGHTSTAT CONTROL SYSTEM.
- ALL FLUORESCENT LAMPED EMERGENCY LIGHTING FIXTURES MUST BE WIRED SUCH THAT ALL LAMPS IN FIXTURE ARE ON DURING SALES OR WORK CONTROLLED TIMES. ALL LAMPS IN NIGHT LIGHT FIXTURES SHALL BE ON AT ALL TIMES. EMERGENCY BATTERY BALLASTS TO BE WIRED TO NORMAL UNCONTROLLED/UNSWITCHED CIRCUITS.
- ROOM SPECIFIC WALL AND CEILING MOTION SENSORS SHALL BE PROVIDED IN DESIGNATED AREAS FOR LIGHTING CONTROL OF THOSE ROOMS, SUCH AS RESTROOMS, OFFICE, STORAGE & LOUNGE.

LIGHTSTAT AUTOMATIC LTG CONTROL NOTES

- EXTERIOR LIGHT SENSOR CONTROLS EXTERIOR SIGNS AT ONE LIGHT LEVEL AND CONTROLS EXTERIOR LIGHTING AT ANOTHER LEVEL.
- "REDUCTION" CONTACTOR SHALL CONTROL APPROXIMATELY 25% OF SALES AREA LIGHTING AND PERIMETER VALENCE LIGHTS SCATTERED EVENLY THROUGHOUT SALES AREA.
- "WORK" AND "SALES" CONTACTORS SHALL SPLIT THE REMAINING 75% OF THE SALES AREA IN HALF EVENLY THROUGHOUT THE SALES AREA.
- THE LOCAL "PUSH BUTTON" LOCATED IN THE MANAGER STATION ACTIVATES THE "SALES" CONTACTORS AND THE REDUCTION CONTACTORS.
- THE MOTION SENSORS SHOWN ON SHEET EM1.2 ACTIVATES THE "WORK" CONTACTORS. "WORK" CHANNEL SHOULD INCLUDE A PERCENTAGE OF THE SALES AREA, STOCK ROOM, SHOE CASE, AND RESTROOM FANS.



LIGHT FIXTURE SCHEDULE NOTES

- PROVIDE ADDITIONAL 2 BOXES OF FLUORESCENT T8 LAMPS AND 2 BOXES OF TRACK LIGHTING LED LAMPS FOR LIGHT FIXTURE TYPE "B" & "C".
- LIGHTING FOR TEAM ONE IS WIRED BY THE GC. (LIGHTS IN CASES PREVIOUSLY INSTALLED). POWER STRIP AND STRIP LIGHT FOR THE MANAGER'S STATION ARE PROVIDED BY THE TENANT VENDOR, INSTALLED AND WIRED BY THE GC.
- SHOE FIXTURES, LIGHTS AND LAMPS ARE PROVIDED BY THE TENANT VENDOR AND INSTALLED BY THE GC. GC ALSO WIRES THE CASES, INSTALL THE LAMPS AND THE ASSOCIATED LAMPS ON FASCIA.
- ALL RECESSED LIGHTING FIXTURES NOT INSTALLED WITHIN A RETURN AIR PLENUM SHALL BE TYPE IC RATED, MANUFACTURED WITH NO PENETRATIONS BETWEEN THE INSIDE OF THE RECESSED LIGHTING FIXTURE AND THE CEILING CAVITY AND SEALED TO PREVENT AIR LEAKAGE, OR SHALL BE INSTALLED IN A SEALED BOX MAINTAINING THE REQUIRED CLEARANCES OF NOT LESS THAN 1" FROM COMBUSTIBLE MATERIAL AND NOT LESS THAN 3" FROM INSULATION MATERIAL.
- EXTERIOR EGRESS LIGHT FIXTURE "R" TO MATCH EXISTING BUILDING STANDARDS IF REQUIRED BY LANDLORD. CONFIRM EXACT REQUIREMENTS WITH LANDLORD PRIOR TO SUBMIT BIDDING. MOUNT AT RECOMMENDED HEIGHT OR AS REQUIRED.

LIGHTING FIXTURE NOTES

- LIGHTING PACKAGE AVAILABLE THROUGH VOSS LIGHTING, DANIEL MILLER, REFER TO STAGE VENDOR CONTACT LIST.
- "NL" INDICATES FIXTURE CIRCUITED TO AN UNSWITCHED NIGHT LIGHT CIRCUIT.
- SEE PLANS FOR SINGLE OR DOUBLE FACE CONFIGURATION.
- AS REQUIRED FOR TRACK: 8" TRACK: 6004NWH, 4" TRACK: 6004NWH. LIVE END: 6048NWH, MINI COUPLER: 6048NWH.
- PROVIDE ADDITIONAL 2 BOXES OF FLUORESCENT LAMPS AND 2 BOXES OF TRACK LIGHTING LAMPS. ALL EMERGENCY BALLASTS SHALL PROVIDE 1400 LUMENS MINIMUM. PROVIDE BATTERY BACKED BALLASTS FOR TWO LAMPS MIN. IN FIXTURE TYPE INDICATED. POWER SENTRY PS1400 OR APPROVED EQUAL. PROVIDE REMOTE TEST SWITCH FLUSH WITH CEILING.
- LIGHTING FOR TEAM ONE IS WIRED BY THE GC. (LIGHTS IN CASES PREVIOUSLY INSTALLED). POWER STRIP AND STRIP LIGHT FOR THE MANAGER'S STATION ARE PROVIDED BY THE TENANT VENDOR, INSTALLED AND WIRED BY THE GC.
- SHOE FIXTURES, LIGHTS AND LAMPS ARE PROVIDED BY THE TENANT VENDOR AND INSTALLED BY THE GC. GC ALSO WIRES THE CASES, INSTALLS THE LAMPS AND INSTALLS THE ASSOCIATED LAMPS ON FASCIA.
- ALL COMPACT FLUORESCENT LIGHTING FIXTURES SHALL BE PROVIDED WITH LAMP AND BALLASTS HAVING AN "END OF LIFE" PROTECTION FEATURE.
- ALL RECESSED LIGHTING FIXTURES NOT INSTALLED WITHIN A RETURN AIR PLENUM SHALL BE TYPE IC RATED, MANUFACTURED WITH NO PENETRATIONS BETWEEN THE INSIDE OF THE RECESSED LIGHTING FIXTURE AND THE CEILING CAVITY AND SEALED TO PREVENT AIR LEAKAGE, OR SHALL BE INSTALLED IN A SEALED BOX MAINTAINING THE REQUIRED CLEARANCES OF NOT LESS THAN 1" FROM COMBUSTIBLE MATERIAL AND NOT LESS THAN 3" FROM INSULATION MATERIAL.

LUMINAIRE SCHEDULE

| FIXT TYPE | DESCRIPTION | MANUFACTURER CATALOG NO. | LAMPS & VOLTAGE | VOLTAGE | TOTAL WATTS | REMARKS |
|-----------|---|--|---|---------|-------------|--|
| A | RECESS PREMIUM, ENERGY SAVING T8, 2'X4" RECESSED MTD, 3 LAMP, ELECTRONIC BALLAST. | DAY-BRITE 2-TG8-3-32-UNV-1/3-EB | (3) 28W PHL-F32T8-ADV841-XEWLL-ALTO-28W | 277V | 84 | AS REQUIRED, GYP BOARD CEILING OPTION FK92X4 |
| AN | SAME AS "A" ABOVE EXCEPT CONNECTED TO AN UNSWITCHED NIGHT LIGHT CIRCUIT AND TO 90 MINUTE BATTERY BACKUPS FOR EMERGENCY LIGHTING AS INDICATED ON NOTES 2 & 6 BELOW | DAY-BRITE 2-TG8-3-32-UNV-1/3-EB | (3) 28W PHL-F32T8-ADV841-XEWLL-ALTO-28W | 277V | 84 | AS REQUIRED, GYP BOARD CEILING OPTION FK92X4. PROVIDE WITH 500 LM BATTERY BALLAST BACKUP (FIELD INSTALLED) |
| AL | SAME AS "A" ABOVE EXCEPT CONNECTED TO 90 MINUTE BATTERY BACKUPS FOR EMERGENCY LIGHTING AS INDICATED ON NOTE 6 BELOW | DAY-BRITE 2-TG8-3-32-UNV-1/3-EB | (3) 28W PHL-F32T8-ADV841-XEWLL-ALTO-28W | 277V | 84 | |
| B | LED FLOOD TRACK LIGHT SYSTEM DESC: LYTESPAN WHITE, 34W, FLOOD; 4000K TRACK SYSTEM LAMP; 12 WHITE LED'S INTEGRATED INTO HEAD 4" TRACK: 6004NWH (INCLUDES DEAD END) 8" TRACK: 6008NWH (INCLUDES DEAD END) LIVE END: 6048NWH MINI-COUPLER: 6049NWH | LIGHTOLIER LLAB140RWH | (3) 34W LED FLOODS RED'D PER EACH 4'-0" TRACK SECTION | 120V | 102 | SEE NOTE 4 |
| D | PENDANT/SURFACE MOUNTED 8" STANDARD STRIP | DAY-BRITE TT-2-32-UNV-1/4-EB | (4) 28W PHL-F32T8-ADV841-XEWLL-ALTO-28W | 277V | 112 | |
| DN | SAME AS "D" ABOVE EXCEPT CONNECTED TO AN UNSWITCHED NIGHT LIGHT CIRCUIT AND TO 90 MINUTE BATTERY BACKUPS FOR EMERGENCY LIGHTING AS INDICATED ON NOTES 2 & 6 BELOW | DAY-BRITE TT-2-32-UNV-1/4-EB | (4) 28W PHL-F32T8-ADV841-XEWLL-ALTO-28W | 277V | 112 | PROVIDE WITH 500 LM BATTERY BALLAST BACKUP (FIELD INSTALLED) |
| DE | SAME AS "D" ABOVE EXCEPT CONNECTED TO 90 MINUTE BATTERY BACKUPS FOR EMERGENCY LIGHTING AS INDICATED ON NOTE 6 BELOW | DAY-BRITE TT-2-32-UNV-1/4-EB | (4) 28W PHL-F32T8-ADV841-XEWLL-ALTO-28W | 277V | 112 | |
| E | PENDANT/SURFACE MOUNTED 4" STANDARD STRIP | DAY-BRITE T-2-32-UNV-1/2-EB | (2) 28W PHL-F32T8-ADV841-XEWLL-ALTO-28W | 277V | 56 | |
| F | PENDANT/SURFACE MOUNTED 2" STANDARD STRIP | DAY-BRITE T-2-17-UNV-1/2-EB | (2) 17W PHL-F17T8-ADV841-ALTO-17W | 277V | 34 | |
| G | EXTERIOR 9"X19-1/2" DECORATIVE WALL SCONCE WITH 2 LED LAMPS (INCLUDED), SEALED/GASKETED CONSTRUCTION, BRUSHED ALUMINUM FINISH AND UL LISTED FOR WET LOCATIONS. | INDESSA LIGHTING 505-2N60-BA-DC | (2) 13W LED WITH MEDIUM BASE INCLUDED | 277V | 26 | BRUSHED ALUMINUM |
| N | RECESSED CEILING MOUNTED 8" OPEN DOWNLIGHT (EXTERIOR CALCULUTE CFL CLEAR FINISH WITH WHITE FLANGE) | LIGHTOLIER SB242HU-ADV-8039-CL-W | (2) 32W PHL-PL-T-32W-841-XEW-4P-ALTO-27W | 277V | 64 | |
| K | EXIT SIGN AND EMERGENCY LIGHT COMBO | CHLORIDE VCRWLRDC | (2) 5.4W LED | 277V | 4 | PROVIDE WITH 90 MINUTE BATTERY BACKUP |
| M | LED EXIT SIGN WITH WHITE FACE, RED LETTERS | CHLORIDE VCRWERM | LED | 277V | 3.2 | PROVIDE WITH 90 MINUTE BATTERY BACKUP |
| R | WALL MOUNTED COMPACT FLUORESCENT WITH DIE-CAST ALUMINUM CONSTRUCTION, DARK PLATINUM FINISH, DIE-FORMED SPECULAR REFLECTOR, TEMPERED GLASS FLAT LENS WITH A WEATHER-TIGHT SILICONE GASKET, COLD-WEATHER BALLAST, EMERGENCY BATTERY PACK AND U.L. LISTED FOR WET LOCATIONS. | McGRAW EDISON 1ST-42-CF-MT-25-DP-CFM12D | (1)-42W CF/41K (INCLUDED) | 277V | 42 | PROVIDE WITH 90 MINUTE BATTERY BACKUP |