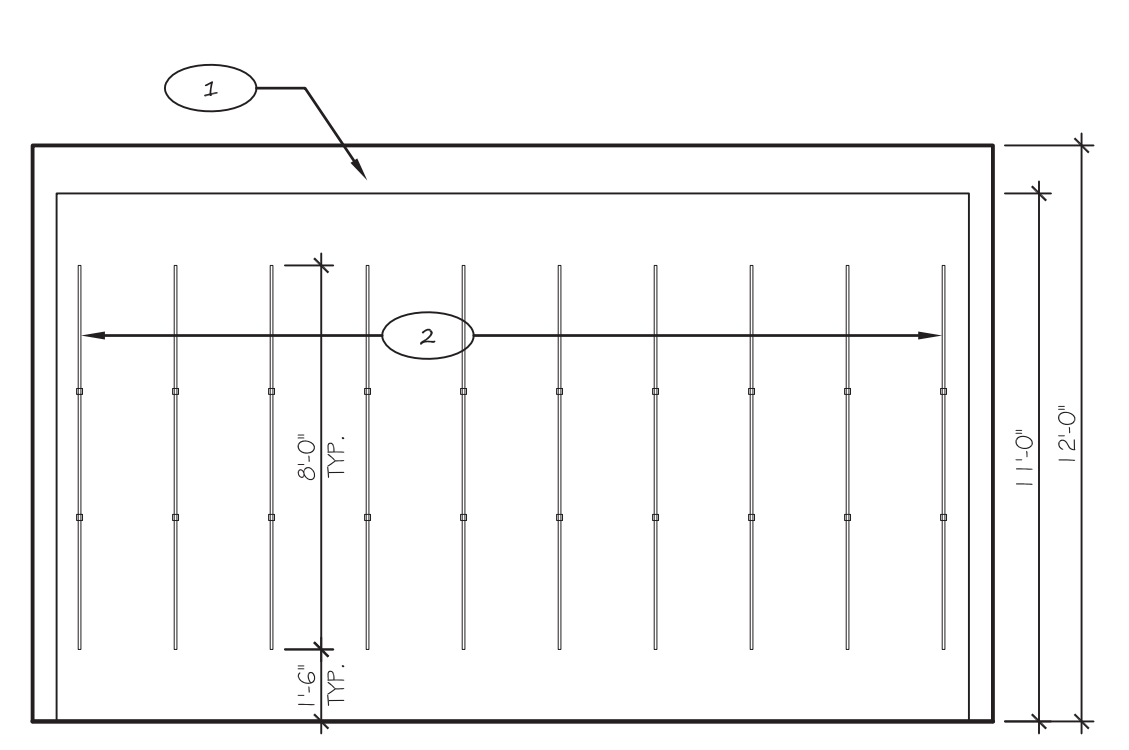
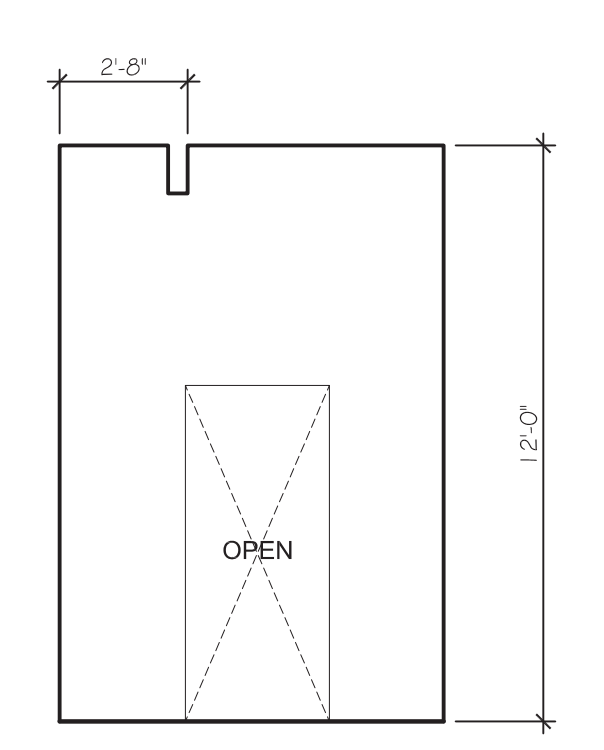


1 INTERIOR ELEVATION
A6-1 | 1/4" = 1'-0"



2 INTERIOR ELEVATION
A6-1 | 1/4" = 1'-0"



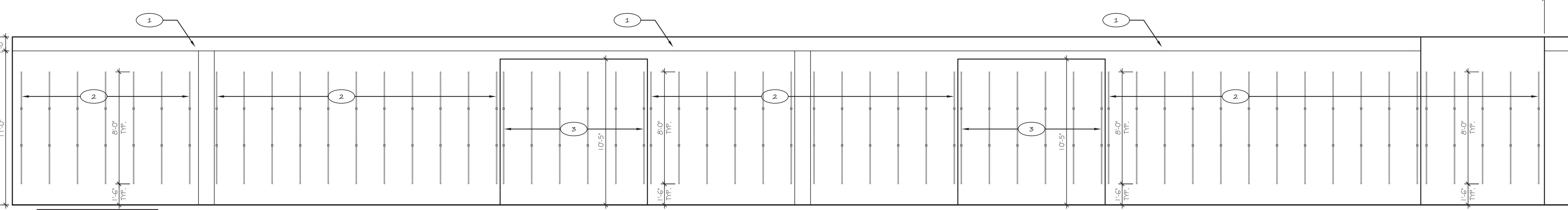
3 INTERIOR ELEVATION
A6-1 | 1/4" = 1'-0"

ELEVATION KEYED NOTES

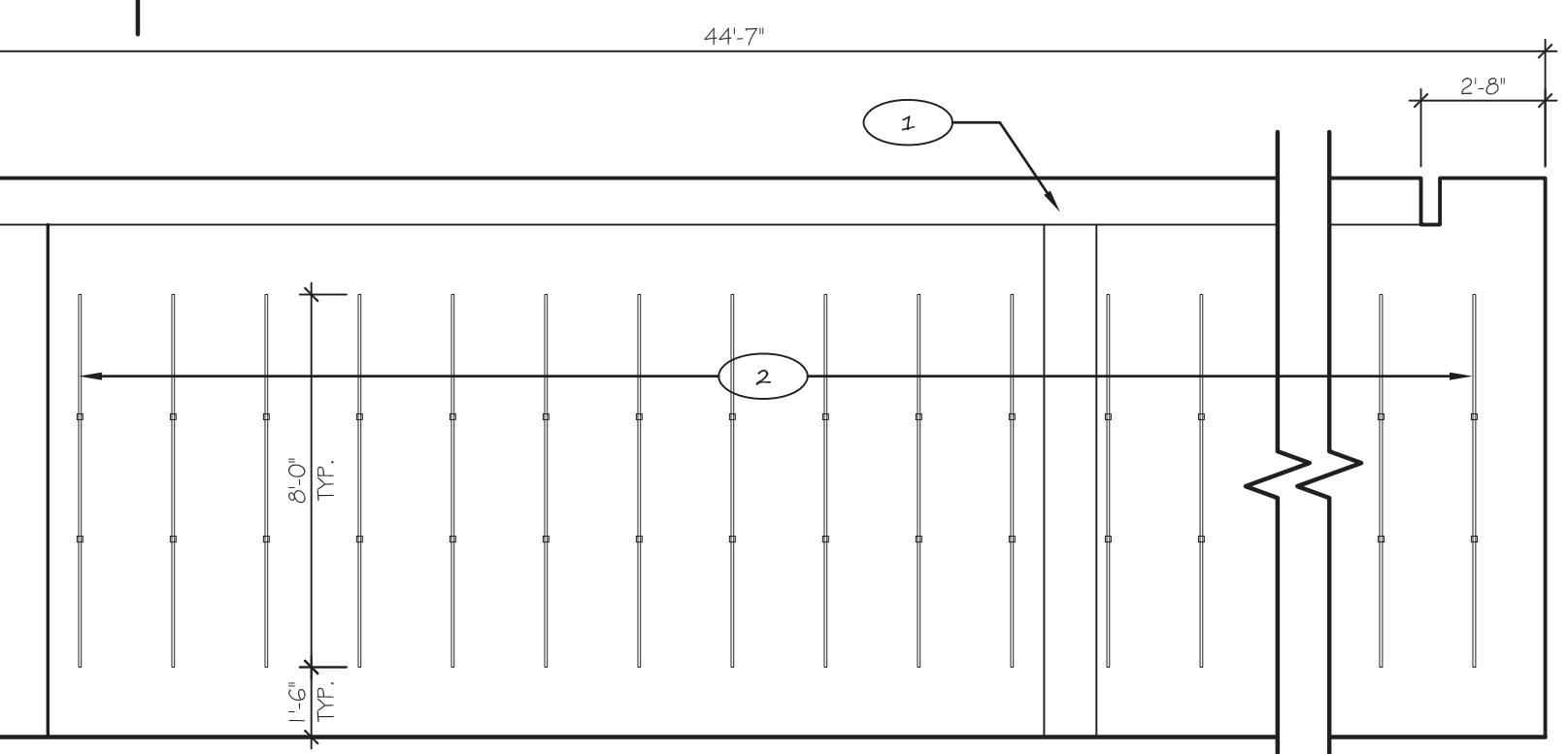
- 1 PERIMETER VALANCE. REFER TO 2/A7-1 FOR ADDITIONAL INFORMATION.
- 2 SURFACE MOUNTED STANDARDS. REFER TO DETAILS 2,3,4/A2-2 AND DETAIL 2/A7-2 FOR ADDITIONAL INFORMATION.
- 3 RECESSED STANDARDS. REFER TO 3/A2-2 FOR ADDITIONAL INFORMATION.

GENERAL NOTES

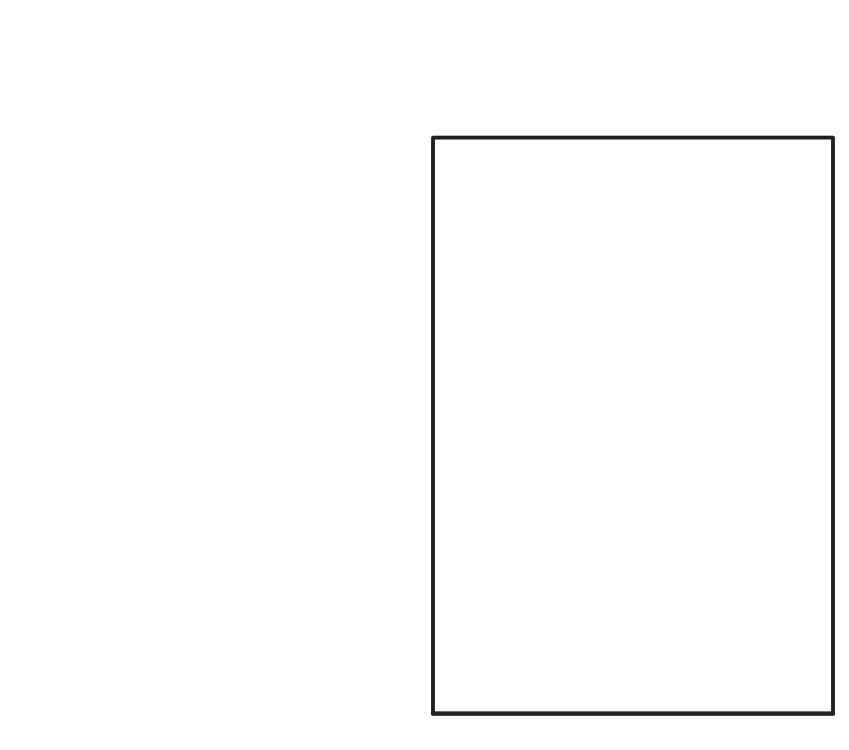
- A. REFER TO PARTITION TYPES FOR ADDITIONAL PARTITION INFORMATION.
- B. REFER TO FLOOR PLANS FOR SPECIFIC DIMENSIONS.
- C. ALL RECESSED AND SURFACE MOUNTED STANDARDS ARE SHOWN FOR REFERENCE ONLY. REFER TO FIXTURE PLAN ON SHEET A2-2 FOR EXACT LOCATIONS.
- D. BREAK ROOM MILLWORK, JANITORS SINK AND DRINKING FOUNTAIN ARE SHOWN FOR REFERENCE. LANDFLOP G.C. SHALL INSTALL ALL BLOCKING, PLUMBING ROUGH INS AND POWER.



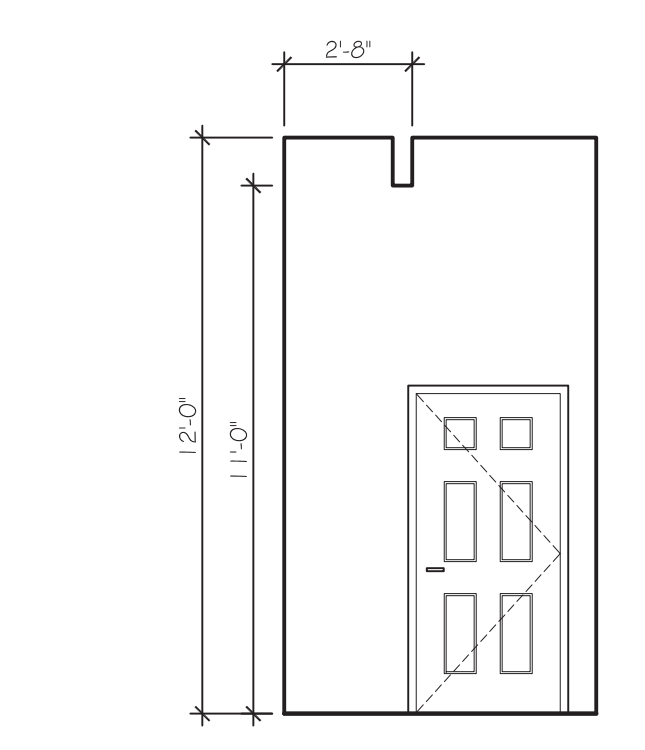
4 INTERIOR ELEVATION
A6-1 | 1/4" = 1'-0"



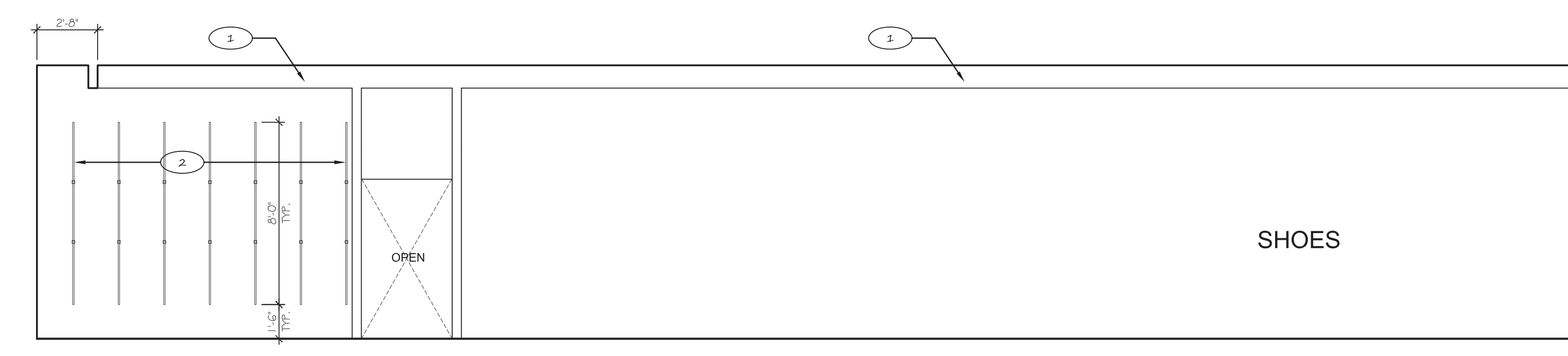
REFERENCE SHEET A141 FOR WALL STANDARD DIMENSIONS



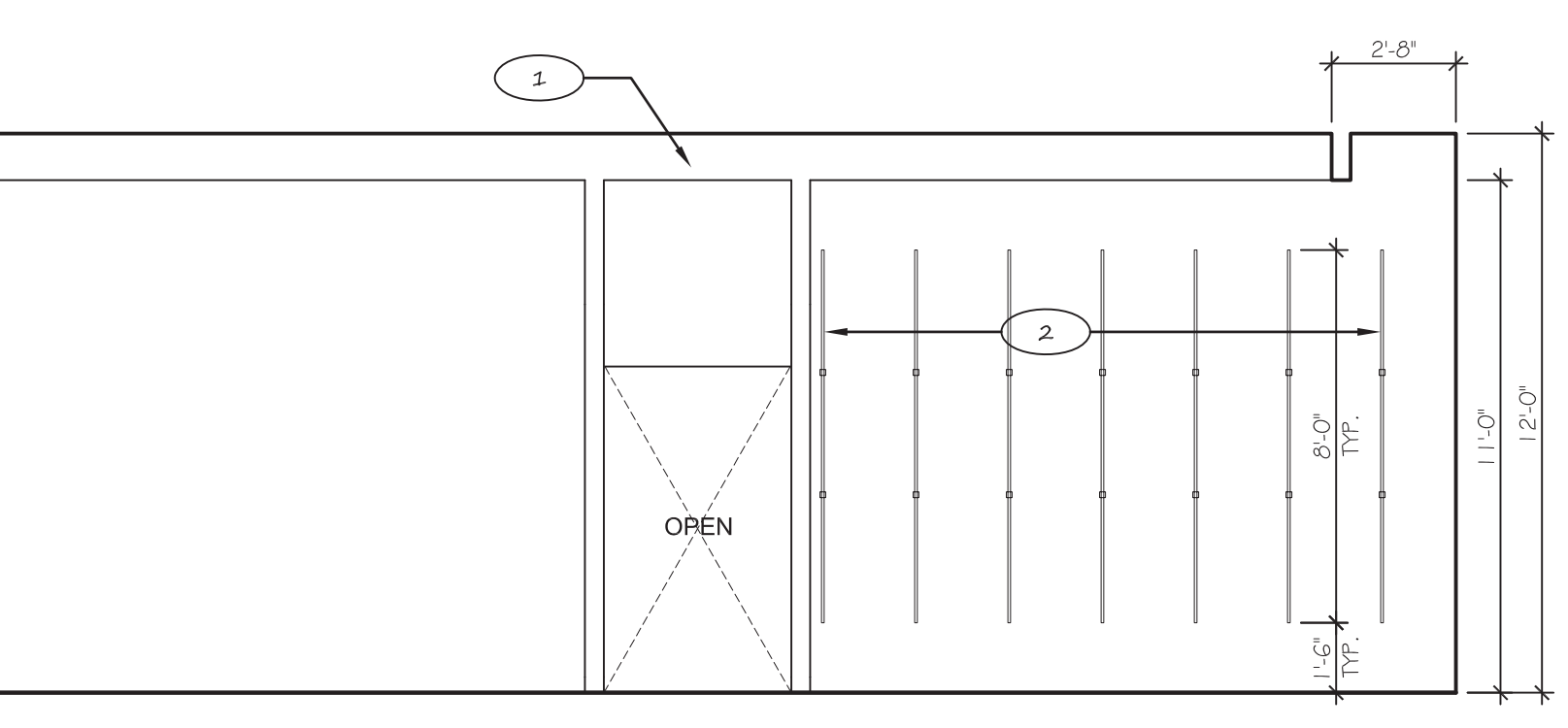
5 INTERIOR ELEVATION
A6-1 | 1/4" = 1'-0"



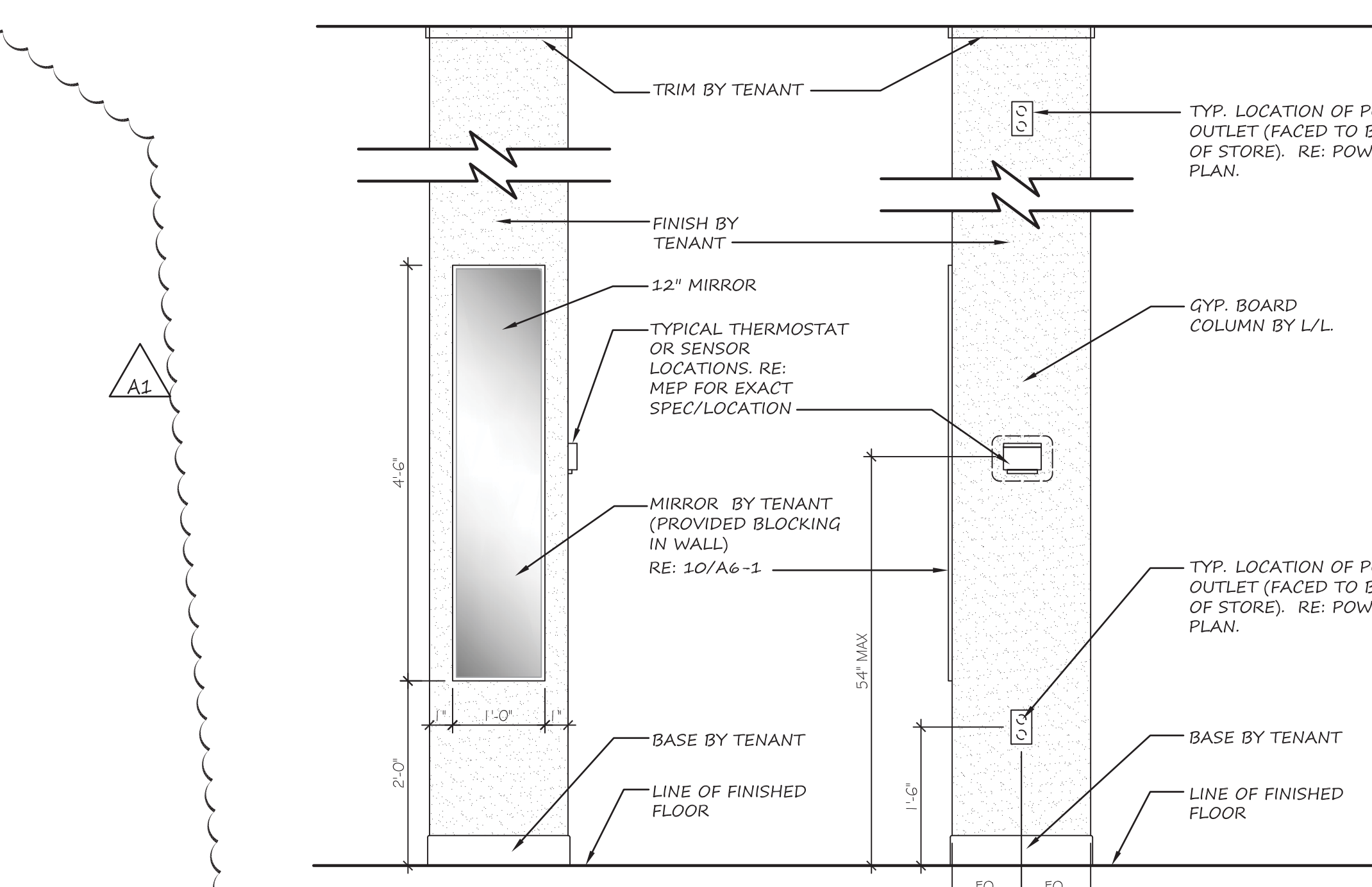
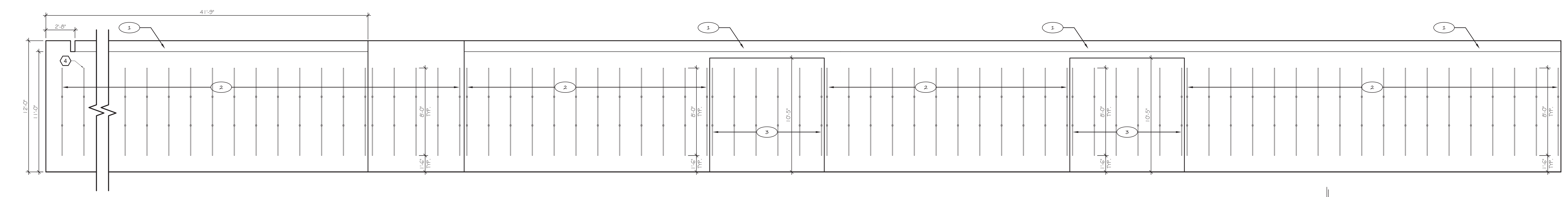
6 INTERIOR ELEVATION
A6-1 | 1/4" = 1'-0"



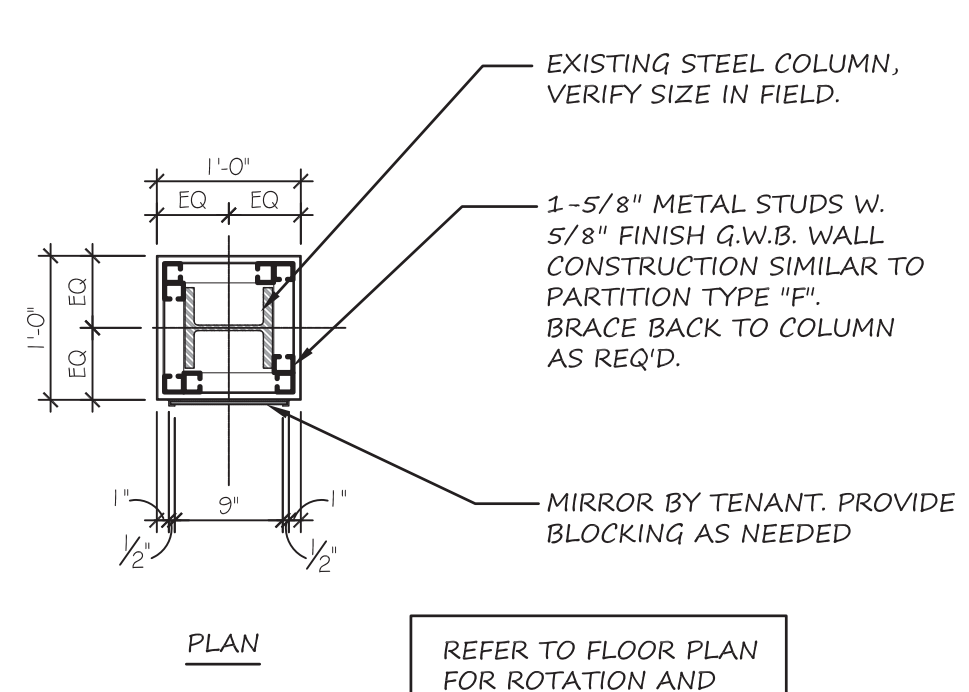
7 INTERIOR ELEVATION
A6-1 | 1/4" = 1'-0"



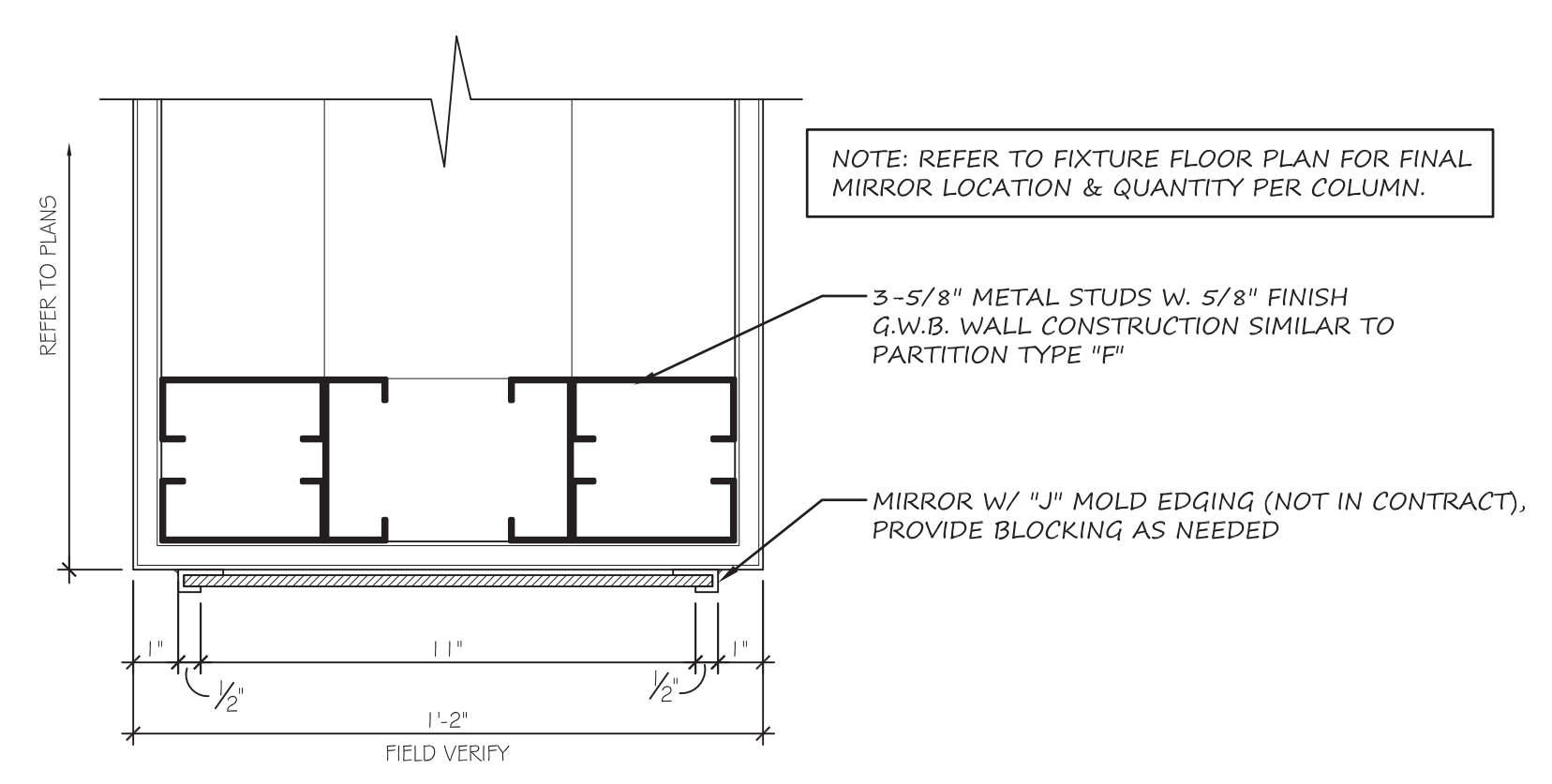
8 INTERIOR ELEVATION
A6-1 | 1/4" = 1'-0"



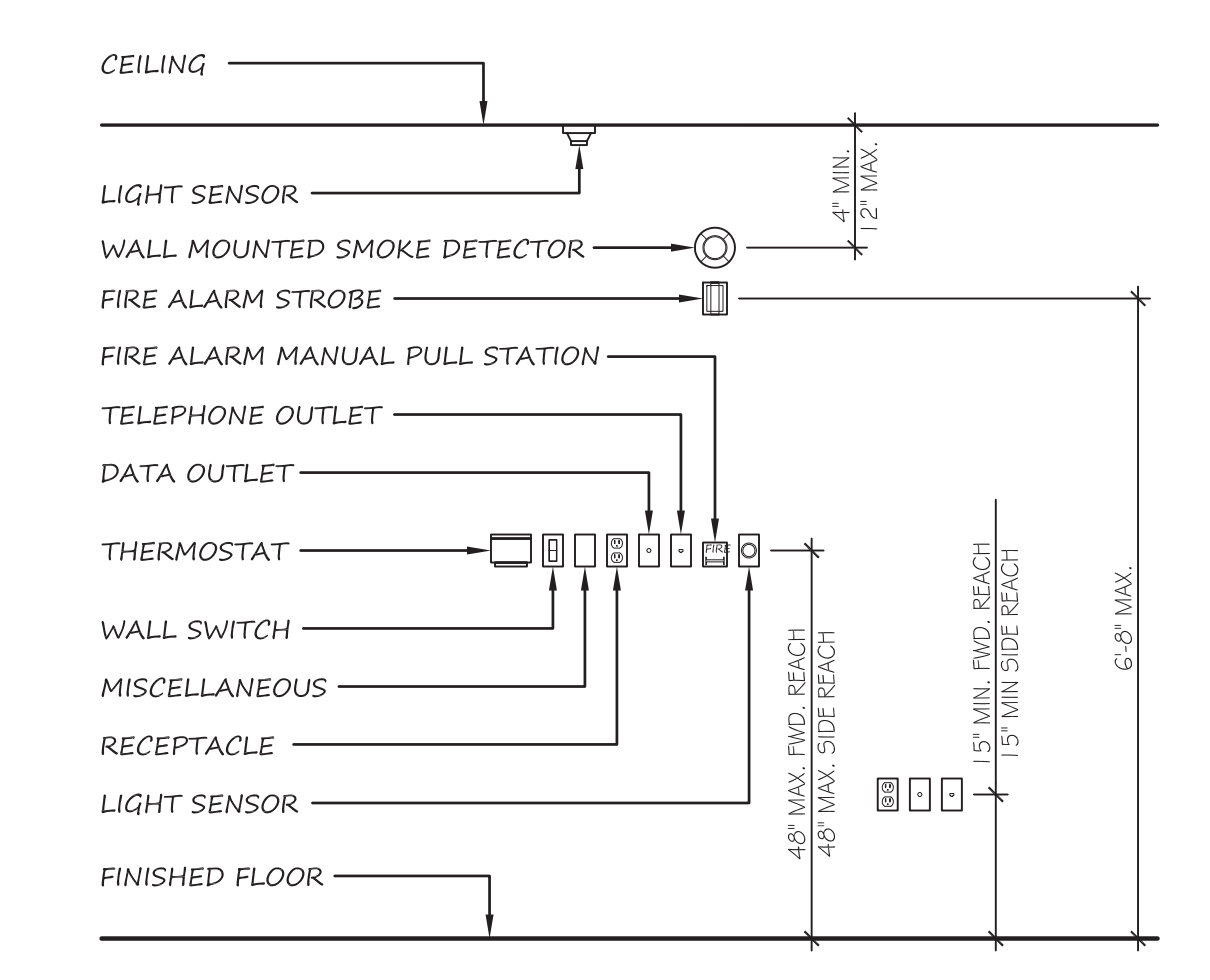
NOTE: TAPE, SAND AND PRIME GYP. BD. ALL SALES AREA COLUMNS SHALL HAVE (1) DUPLEX RECEPTACLE MOUNTED AT 38" A.F.F. AND ONE 12" BELOW THE CEILING ON THE OPPOSITE SIDE FROM STREET ENTRANCE RE: ELECTRICAL DRAWINGS FOR ADDITIONAL INFORMATION.



9 COLUMN DETAILS
A6-1 | SCALE: 3/4" = 1'-0"



10 MIRROR DETAIL
A6-1 | SCALE: 3" = 1'-0"



11 TYPICAL MOUNTING HEIGHTS
A6-1 | SCALE: 1/2" = 1'-0"

WINDLE + VOLPE
ARCHITECTS
7600 SMITH FLD
HOUSTON, TEXAS 77065
PH 713-255-1590



BEALLS WHITE BOX
CROSSROADS MALL
GREENVILLE, TEXAS
GREENVILLE PROPERTIES LTD.
GREENVILLE, TEXAS

DATE: 1/4/2015
PROJECT NO.: 8-12-05
DRAWN BY: AEP

INTERIOR ELEVATIONS
A6-1