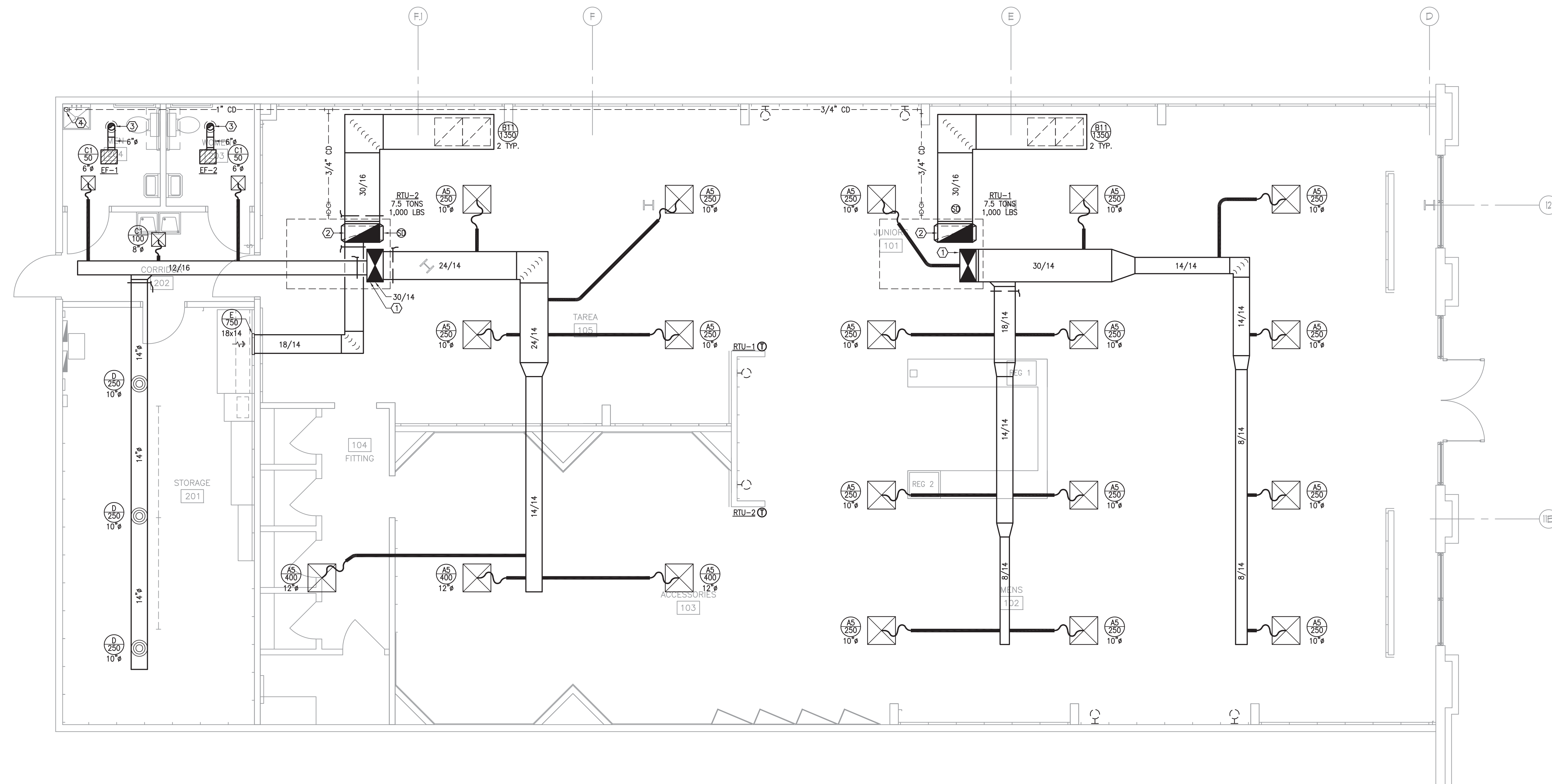


**GENERAL NOTES**

1. ALL DUCT SIZES SHOWN ARE INSIDE CLEAR. INCREASE ACCORDINGLY WHERE INTERIOR LINER IS SHOWN OR SPECIFIED.
2. COORDINATE IN THE FIELD THE EXACT LOCATION OF ROOFTOP UNIT LOCATIONS WITH ROOFING CONTRACTOR.
3. SENSORS SHALL BE MOUNTED AT +48" AFF (ABOVE FINISHED FLOOR), UNLESS OTHERWISE NOTED.
4. MECHANICAL CONTRACTOR SHALL COORDINATE WITH THE ELECTRICAL CONTRACTOR FOR ALL ELECTRICAL POWER REQUIREMENTS.
5. THESE CONSTRUCTION DRAWINGS ARE DIAGRAMMATIC, AND DO NOT NECESSARILY REFLECT ACTUAL DIMENSIONS. IT IS THE RESPONSIBILITY OF THE CONTRACTOR TO FIELD-VERIFY ALL DIMENSIONS AND COORDINATE PLACEMENT OF ALL EQUIPMENT AND ROUTING OF ALL PIPING AND/OR DUCT SYSTEMS.

**KEYED NOTES**

- ① ROUTE SUPPLY AIR DUCT UP TO ROOF TOP UNIT. TRANSITION AS REQUIRED TO CONNECT TO SUPPLY AIR OPENING.
- ② ROUTE RETURN AIR DUCT UP TO ROOF TOP UNIT. TRANSITION AS REQUIRED TO CONNECT TO RETURN AIR OPENING.
- ③ ROUTE EXHAUST DUCT UP TO ROOF. PROVIDE WEATHER PROOF ROOF CAP.
- ④ ROUTE CONDENSATE LINE DOWN THROUGH ROOF TO FLOOR DRAIN PROVIDED. REFER TO PLUMBING FOR EXACT LOCATION OF FLOOR DRAIN.



**1 MECHANICAL FLOOR PLAN**  
SCALE: 1/4" = 1'-0"

**Hermes Architects**  
K/AE PROJECT # 030101

**AKME**  
KALMAN MARSHALL ENGINEERS, INC.  
HOUSTON | DALLAS/FT. WORTH | BAYTOWN  
1930 W. Sam Houston Parkway West, Suite 900  
HOUSTON, TEXAS 77061  
REGISTRATION # E-4111

Members A.I.A.  
1177 West Loop South, Ste 500  
Houston, Texas 77027  
Tel 713-785-3644  
www.hermesarchitects.com

THIS DOCUMENT IS RELEASED FOR THE PURPOSE OF REVIEW UNDER THE AUTHORITY OF BRADLEY KALMANS, P.E. 80219 ON SEPTEMBER 2, 2011. IT IS NOT TO BE USED FOR CONSTRUCTION PURPOSES.

CROSSROADS MALL  
RUE 21  
6834 WESLEY STREET  
GREENVILLE, TEXAS 75401

**Crossroads**  
GREENVILLE PROPERTIES LTD.

GREENVILLE PROPERTIES, LTD.  
10850 WILCHIRE BLVD.  
SUITE 1050  
LOS ANGELES, CA 90024

DATE	SEPTEMBER 2, 2011
PROJECT NO.	809501
DRAWN BY	
CHECKED BY	

MECHANICAL FLOOR PLAN

M1.01