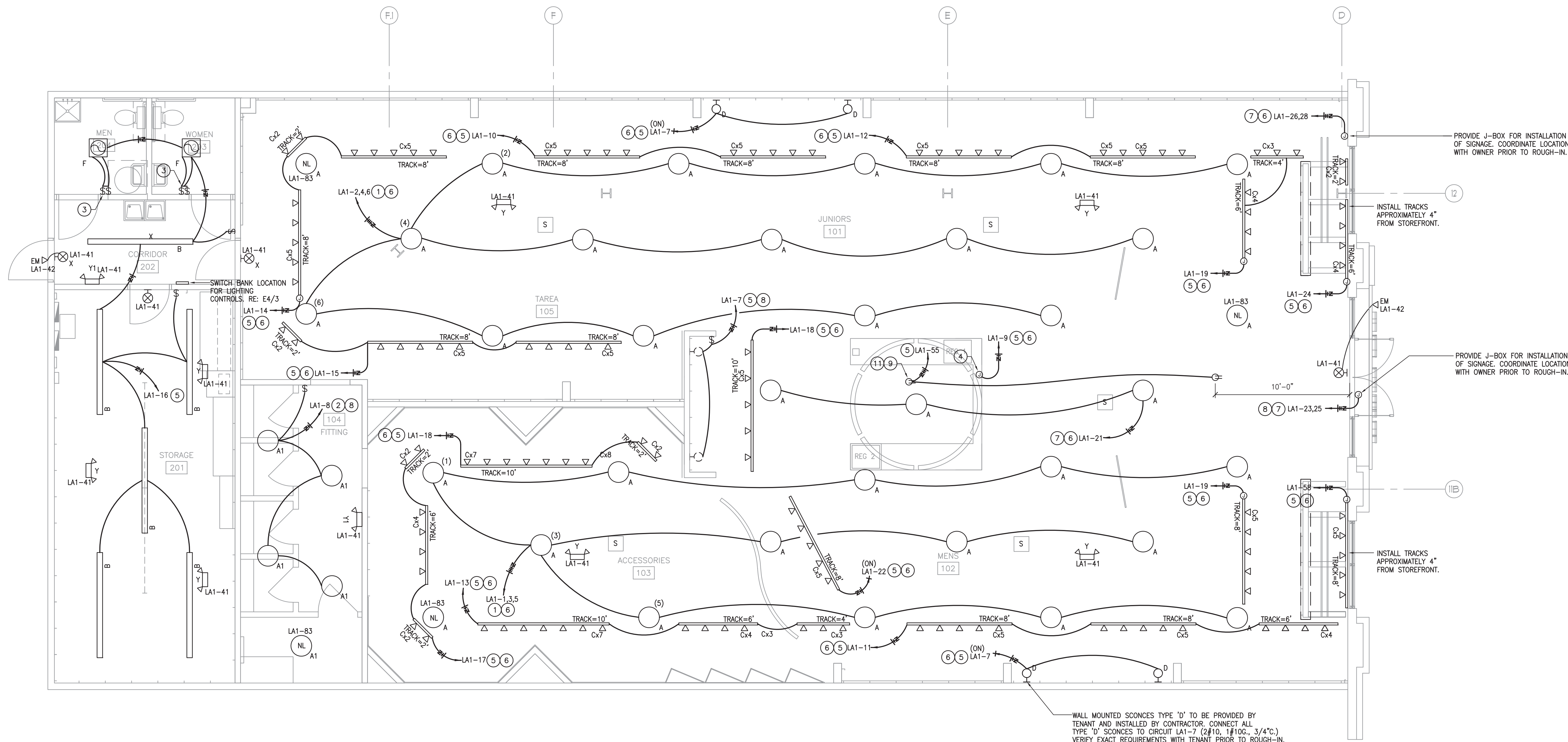


GENERAL NOTES - LIGHTING

1. ALL HOME RUNS WILL BE 2#12, 1#12G, 3/4" C. UNLESS OTHERWISE NOTED.
2. ALL EMPTY CONDUITS SHALL HAVE PULL STRINGS.
3. ALL JUNCTION BOXES SHALL BE SIZED PER NEC.
4. A) LIGHTING CONTROL CABINET TO INSTALL ALL LIGHTING SWITCHES (a,b,c,d,e) AND CONTACTORS. VERIFY EXACT LOCATION WITH TENANT.
 B.) SALES AREA LIGHTING FIXTURES SHALL BE CONTROLLED AS FOLLOWS :
 1. CIRCUITS LA1-1,3,5 TO BE CONTROLLED BY Sw "d" CONTACTOR 'A'. (SALES FLOOR LIGHTING).
 2. CIRCUITS LA1-2, 4 AND 6 TO BE CONTROLLED BY Sw "b" CONTACTOR 'B'. (SALES FRONT ENTRANCE).
 3. CIRCUITS LA1-10, 12, 14, 15, 17, 18, 22 TO BE CONTROLLED BY Sw "c" CONTACTOR 'C'. (SALES FLOOR TRACK LIGHTING).
 4. CIRCUITS LA1-7, 9, 11, 13, 19, 21, 24 AND 58 TO BE CONTROLLED BY Sw "d" CONTACTOR 'D'. (PERIMETER TRACK LIGHTING).
 C.) 7 DAY TIME CLOCK AND 2 HOUR OVER RIDE SWITCH TO CONTROL ALL LIGHTS PER IEC 2001.
5. COORDINATE MOUNTING HEIGHTS, EXACT LOCATION AND REQUIREMENTS OF ALL LIGHTING FIXTURES WITH TENANT PRIOR TO ROUGH-IN.

NOTES BY SYMBOLS - LIGHTING

- (1) 4#10, 1#10G, 3/4" C.
- (2) 2#12, 1#12G, 3/4" C.
- (3) PROVIDE 2 POLE SWITCH, ONE FOR LIGHT CONTROL & ONE FOR FAN CONTROL OF VENT LIGHT.
- (4) PROVIDE JUNCTION BOX FOR POWER TO SUSPENDED CEILING ELEMENT. VERIFY REQUIREMENTS WITH TENANT PRIOR TO ROUGH-IN.
- (5) 2#10, 1#10G, 3/4" C.
- (6) REFER TO GENERAL NOTE 4 ON THIS DRAWING DETAIL 5 ON DRAWING E200. FOR LIGHTING CONTROL.
- (7) 3#10, 1#10G, 3/4" C.
- (8) ROUTE CIRCUIT THRU TIME CLOCK.
- (9) PROVIDE RECEPTACLE MOUNT TO BAR JOIST FOR CONNECTION OF SECURITY CAMERA DOME.
- (10) 3#12, 1#12G, 3/4" C.
- (11) VERIFY EXACT REQUIREMENTS FOR SECURITY CAMERAS WITH SECURITY CAMERA PROVIDER PRIOR TO ROUGH-IN.



1 ELECTRICAL LIGHTING PLAN
SCALE: 1/4" = 1'-0"

WALL MOUNTED SCANCES TYPE 'D' TO BE PROVIDED BY TENANT AND INSTALLED BY CONTRACTOR. CONNECT ALL TYPE 'D' SCANCES TO CIRCUIT LA1-7 (2#10, 1#10G, 3/4" C.). VERIFY EXACT REQUIREMENTS WITH TENANT PRIOR TO ROUGH-IN.

Hermes Architects
 K&E PROJECT # 000101
AKME
 KALMAN MARSHALL ENGINEERS, INC.
 HOUSTON | DALLAS | WORTH | BAYTOWN
 19300 W. Sam Houston Blvd. Suite 900
 Houston, TX 77058
 REGISTRATION # E-4111

THIS DOCUMENT IS RELEASED FOR THE PURPOSE OF REVIEW UNDER THE AUTHORITY OF BRADLEY KALMANS, P.E. 80219 ON SEPTEMBER 2, 2011. IT IS NOT TO BE USED FOR CONSTRUCTION PURPOSES.

Crossroads
 GREENVILLE PROPERTIES LTD.
 CROSSROADS MALL
 RUE 21
 6834 WESLEY STREET
 GREENVILLE, TEXAS 75401
 GREENVILLE PROPERTIES, LTD.
 10850 WILCHIRE BLVD.
 SUITE 1050
 LOS ANGELES, CA 90024

DATE	SEPTEMBER 2, 2011
PROJECT NO.	809501
DRAWN BY	
CHECKED BY	

ELECTRICAL LIGHTING PLAN

E1.01