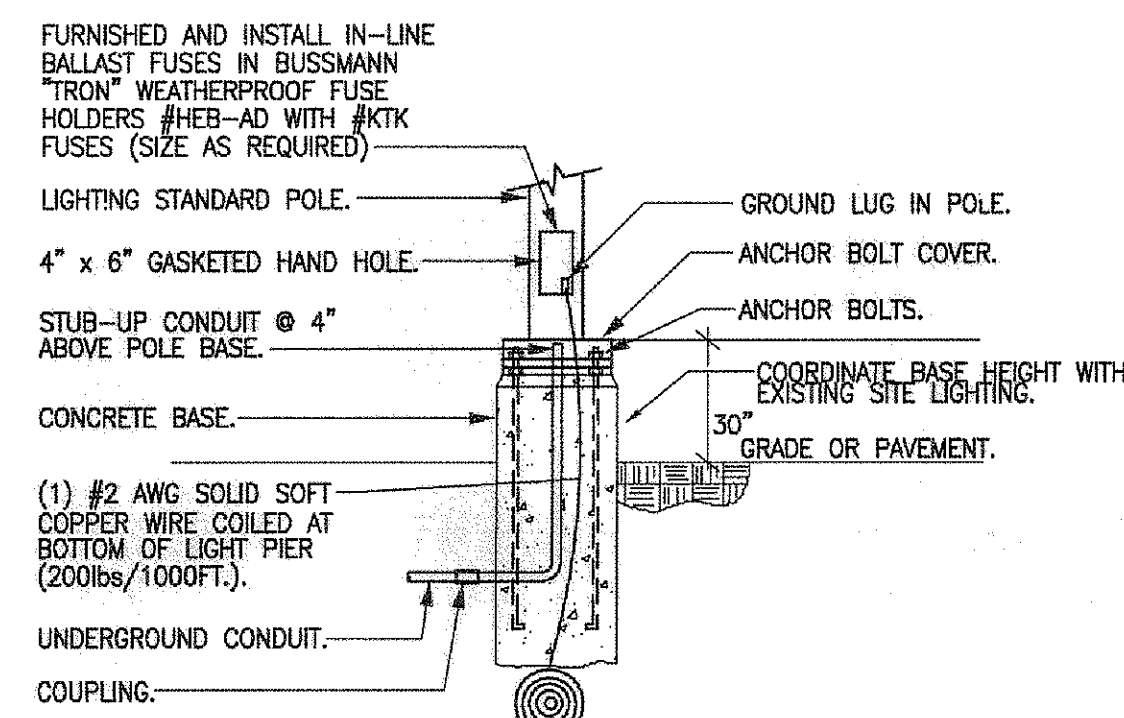
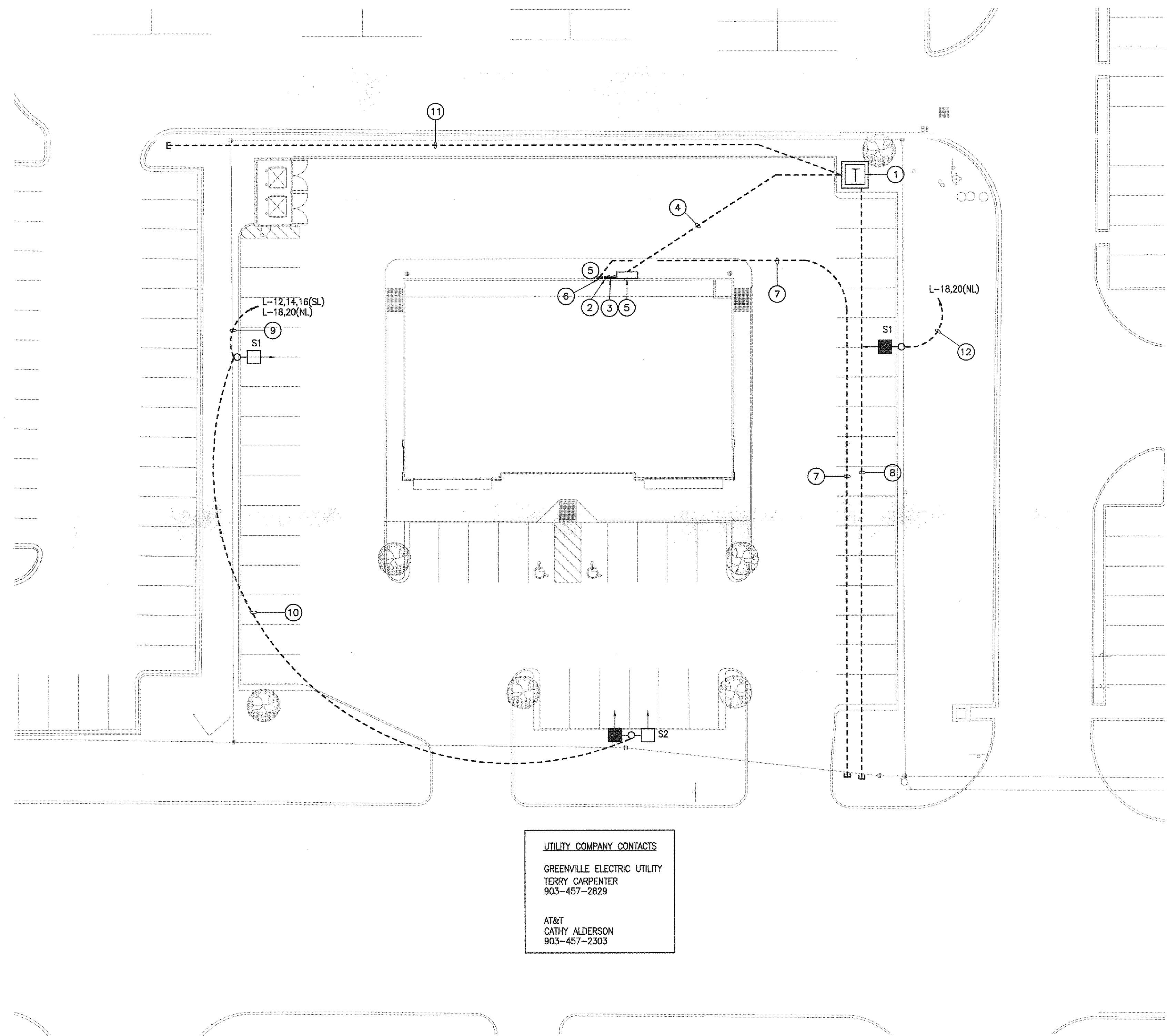


PARKING LOT LIGHT FIXTURE SCHEDULE						
TYPE	MANUFACTURER	NUMBER OF FIXTURES PER POLE	NO.	LAMPS TYPE	VOLTS	POLE MODEL NO./REMARKS
S1	LITHONIA KVS3-100GM-R5-XX-RP12-LPI-HS	1	1	1000M HID	208	CAT.#RTS-501-AB-XX-01 COLOR TO BE SELECTED BY ARCHITECT
S2	LITHONIA KVS3-100GM-R5-XX-RP12-LPI-HS	2	1	1000M HID	208	CAT.#RTS-501-AB-XX-02 COLOR TO BE SELECTED BY ARCHITECT



2 ELECTRICAL REQUIREMENTS AT POLE BASE
SCALE: N.T.S.



UTILITY COMPANY CONTACTS
GREENVILLE ELECTRIC UTILITY
TERRY CARPENTER
903-457-2829

AT&T
CATHY ALDERSON
903-457-2303

1 SITE PLAN - LIGHTING
SCALE: 1"=20'-0"

BID ALTERNATES:

BID ALTERNATE #1
CONTRACTOR SHALL PROVIDE A PRICE BROKEN OUT FROM THE BASE BID PRICE PROVIDING A CREDIT FOR CONDUITS AS IDENTIFIED WITH KEYED NOTE #11 ON THIS DRAWING. WORK ASSOCIATED WITH BID ALTERNATE #1 WOULD INCLUDE ALL WORK NECESSARY AND ASSOCIATED WITH PROVIDING AND ROUTING CONDUITS TO UTILITY COMPANY DESIGNATED LOCATION SOUTH OF THE BUILDING. COORDINATE WITH UTILITY PRIOR TO BID.

ELECTRICAL KEYED NOTES THIS SHEET

- ① UTILITY COMPANY PAD MOUNTED TRANSFORMER FOR RETAIL BUILDING.
- ② HOUSE PANEL "L".
- ③ LIGHTING CONTROL CABINET.
- ④ REFER TO DETAIL 2/E2.1 RISER DIAGRAM FOR WIRE AND CONDUIT SIZES.
- ⑤ REFER TO SHEET E2.1 FOR EXACT LOCATION OF ELECTRICAL SERVICE AND HOUSE PANEL.
- ⑥ TELEPHONE SERVICE CABINET. REFER TO SHEET E2.1 FOR EXACT LOCATION.
- ⑦ 2-4" CONDUITS WITH LONG SWEEPING 90 DEGREE ELBOWS AND PULL WIRE FOR TELEPHONE SERVICE PER LOCAL PHONE COMPANY SPECIFICATIONS. PROVIDE PULL BOXES AS REQUIRED IN ACCORDANCE WITH UTILITY REQUIREMENTS. COORDINATE EXACT DEMARKATION LOCATION WITH UTILITY COMPANY.
- ⑧ 2-4" CONDUITS WITH LONG SWEEPING 90 DEGREE ELBOWS AND PULL WIRE FOR PRIMARY ELECTRICAL CONDUITS PER LOCAL UTILITY COMPANY SPECIFICATIONS. PROVIDE PULL BOXES AS REQUIRED IN ACCORDANCE WITH UTILITY REQUIREMENTS. ROUTE CONDUIT TO UTILITY COMPANY DESIGNATED LOCATION. COORDINATE WITH UTILITY PRIOR TO BID. COORDINATE EXACT DEMARKATION LOCATION WITH UTILITY COMPANY.
- ⑨ 3#10, 2#10(NL), 1#10G 1" C
- ⑩ 2#10, 2#10(NL), 1#10G 1" C
- ⑪ 2-4" CONDUITS WITH LONG SWEEPING 90 DEGREE ELBOWS AND PULL WIRE FOR PRIMARY ELECTRICAL CONDUITS PER LOCAL UTILITY COMPANY SPECIFICATIONS. PROVIDE PULL BOXES AS REQUIRED IN ACCORDANCE WITH UTILITY REQUIREMENTS. ROUTE CONDUIT TO UTILITY COMPANY DESIGNATED LOCATION. COORDINATE WITH UTILITY PRIOR TO BID.
- ⑫ 2#10(NL), 1#10G 1" C

Hermes Architects

Members A.L.A.
1177 West Loop South, Suite 500
Houston, Texas 77027
Tel: 713-785-3644
Fax: 713-953-2515
www.hermesarchitects.com

LEASE BUILDING AT CROSSROADS MALL
6906 WESLEY STREET
GREENVILLE, TEXAS

Crossroads GREENVILLE PROPERTIES LTD.
10850 WILCHIRE BLVD.
SUITE 1050
LOS ANGELES, CA 90024

DATE: 02/16/09
PROJECT NO.: 809500
DRAWN BY:
CHECKED BY:

02/16/09
KEITH W. GASSMAN
REGISTERED PROFESSIONAL ENGINEER
NO. 89636
STATE OF TEXAS

KALMANS MARSHALL ENGINEERING, INC.
HOUSTON | DALLAS/FT. WORTH | BATON ROUGE
1425 Greenway Drive, Suite 840
Irving, Texas 75038 (972) 812-1270

SITE PLAN LIGHTING

E1.1