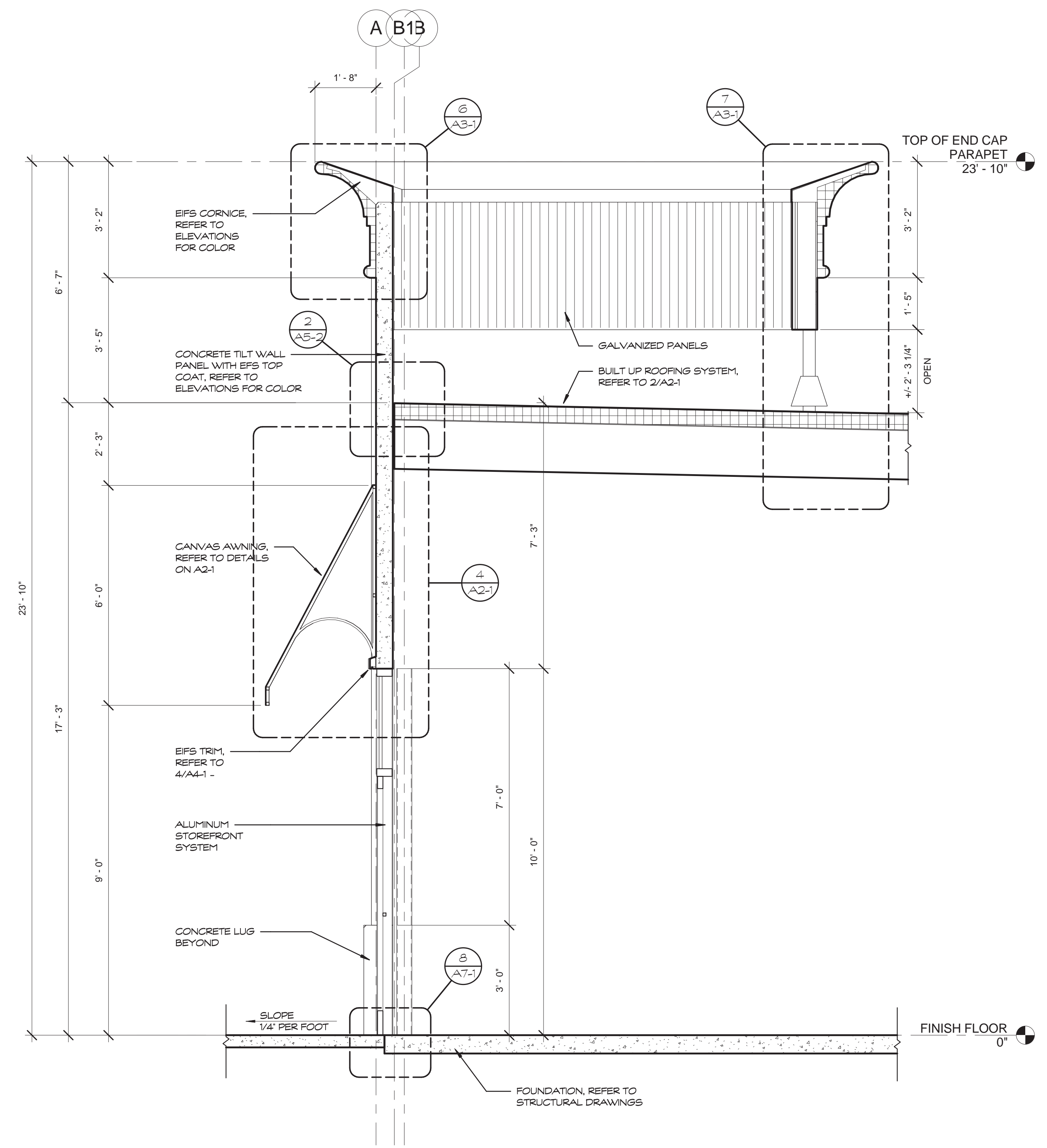
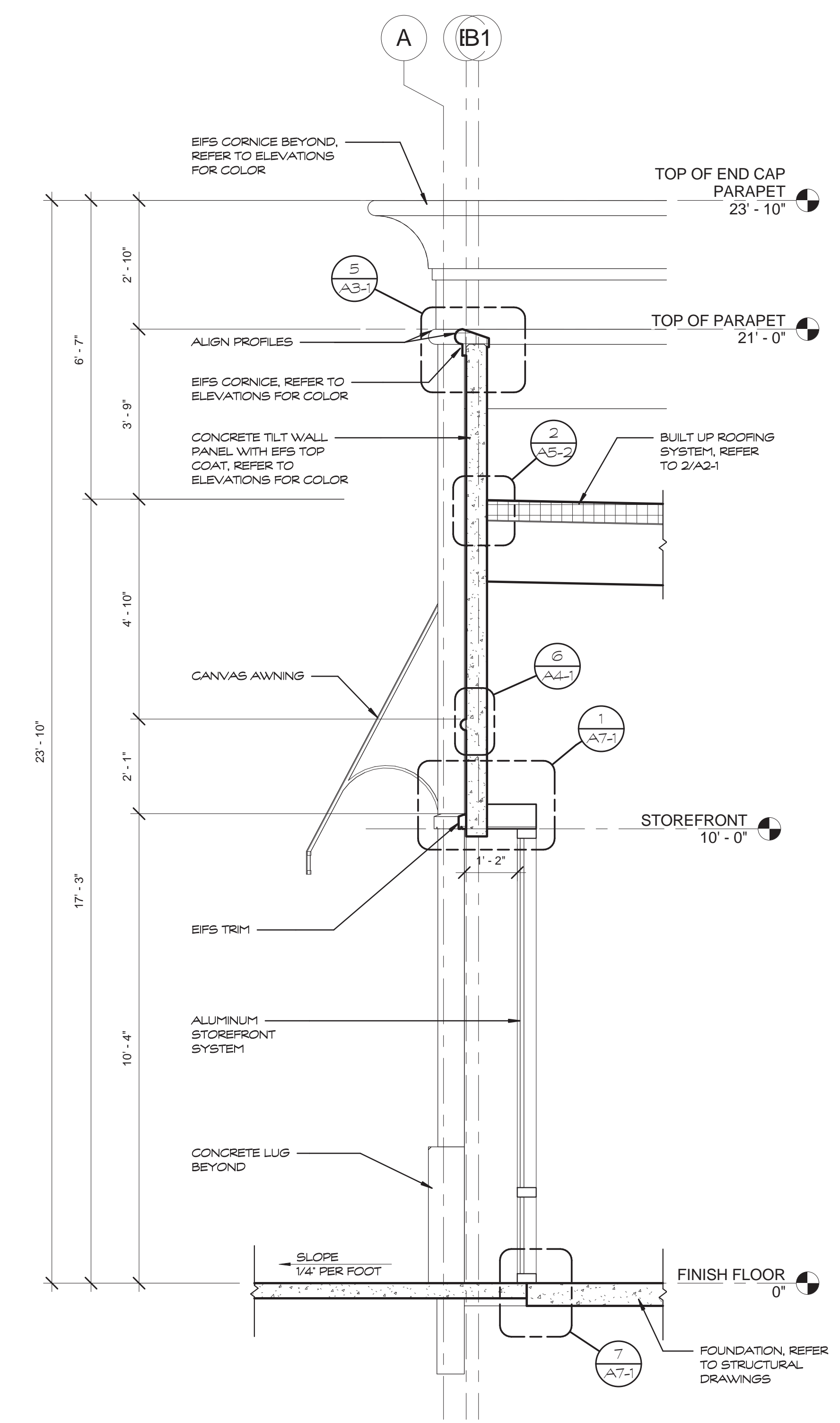


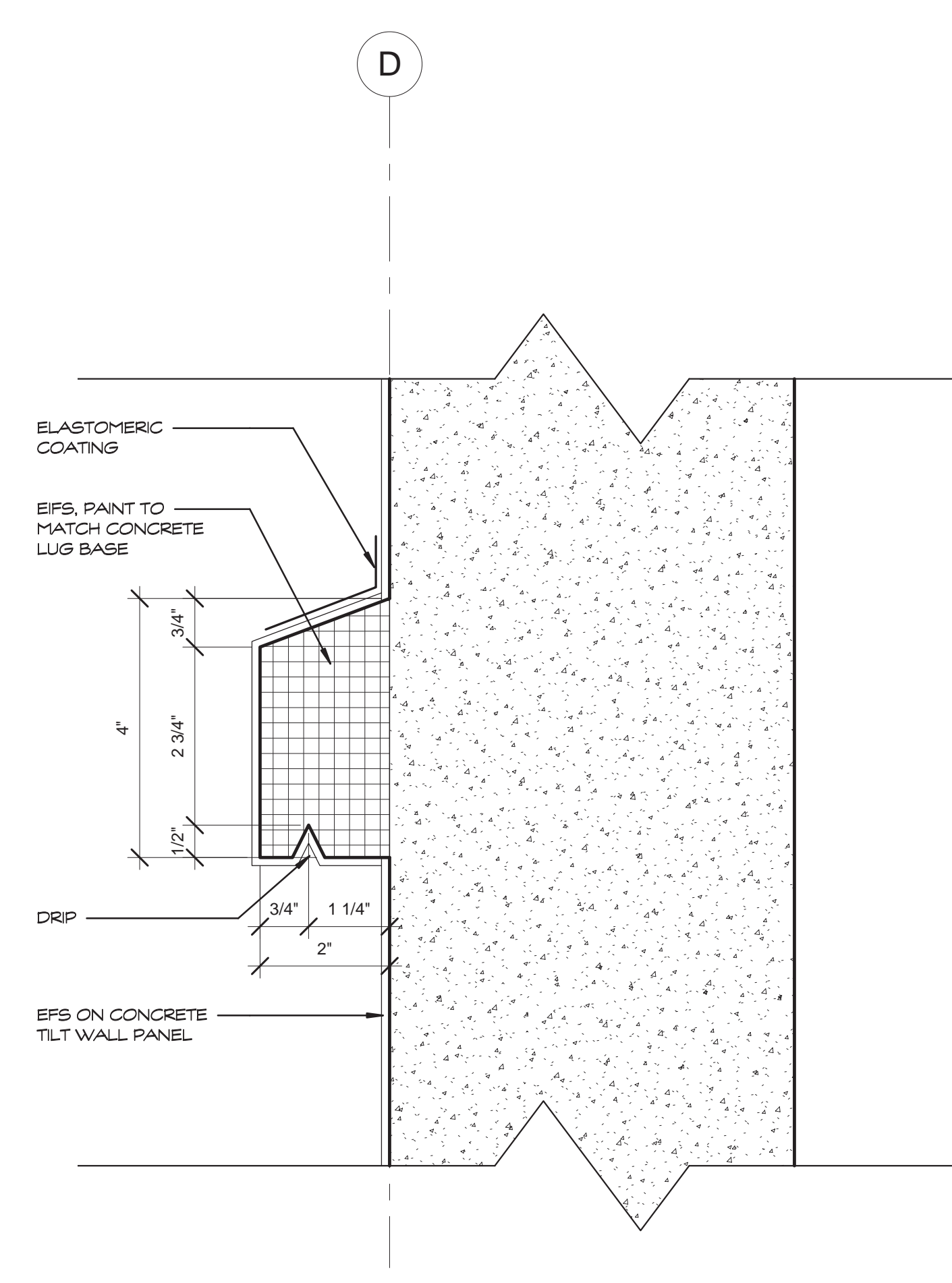
1 TYPICAL WALL SECTION
A4-1 SCALE 1/2" = 1'-0"



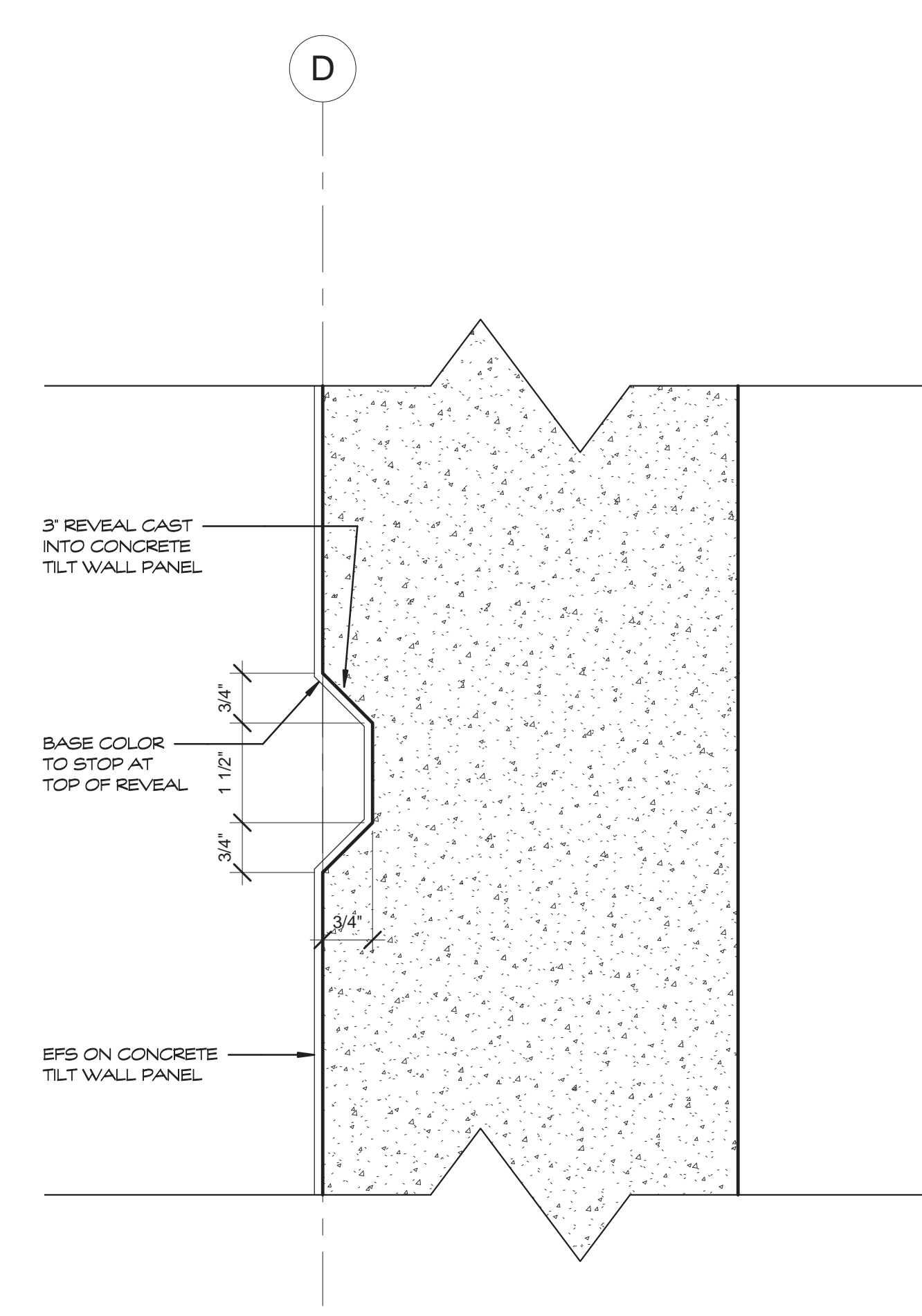
2 WALL SECTION AT END CAP
A4-1 SCALE 1/2" = 1'-0"



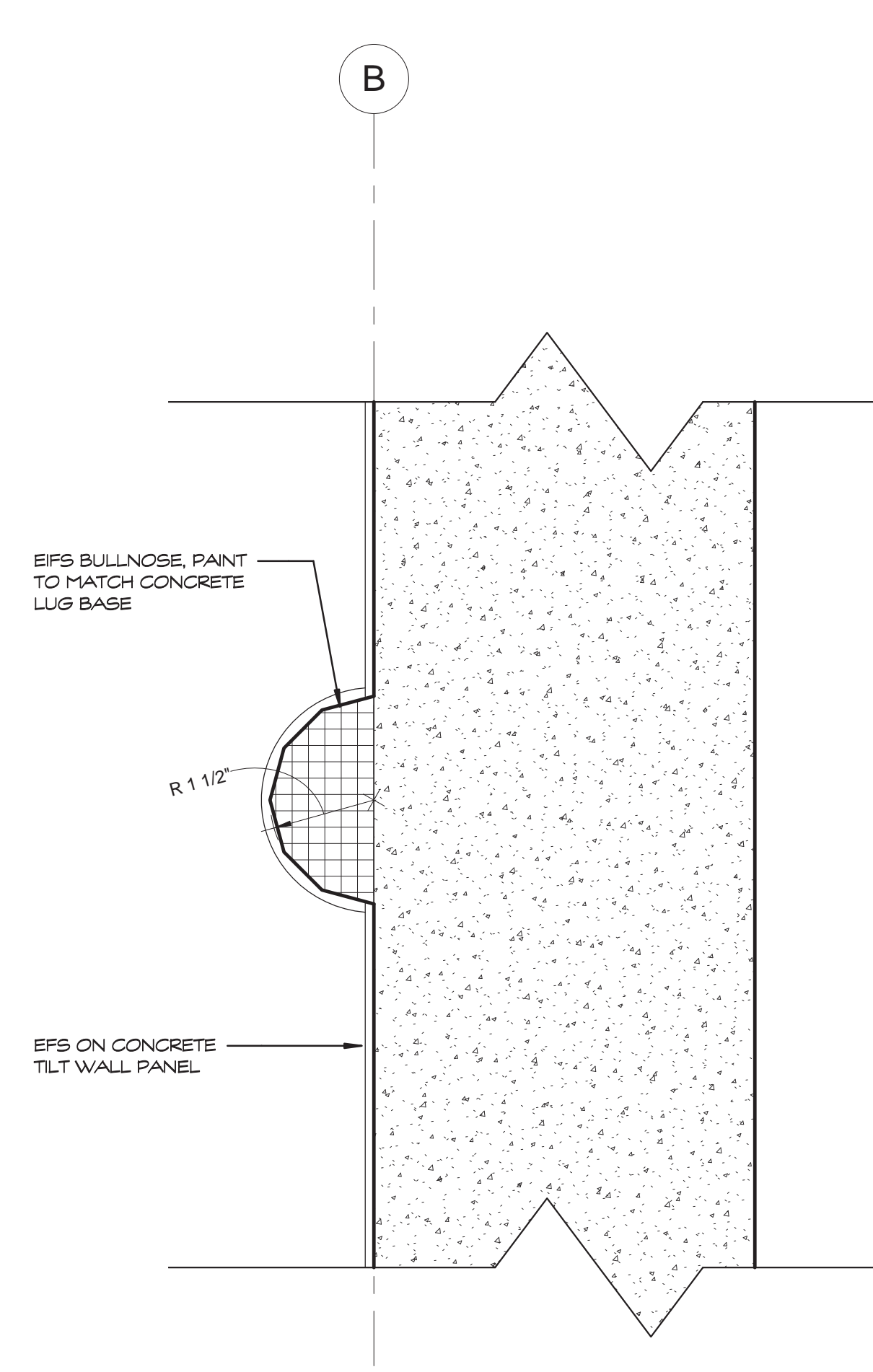
3 WALL SECTION AT STOREFRONT
A4-1 SCALE 1/2" = 1'-0"



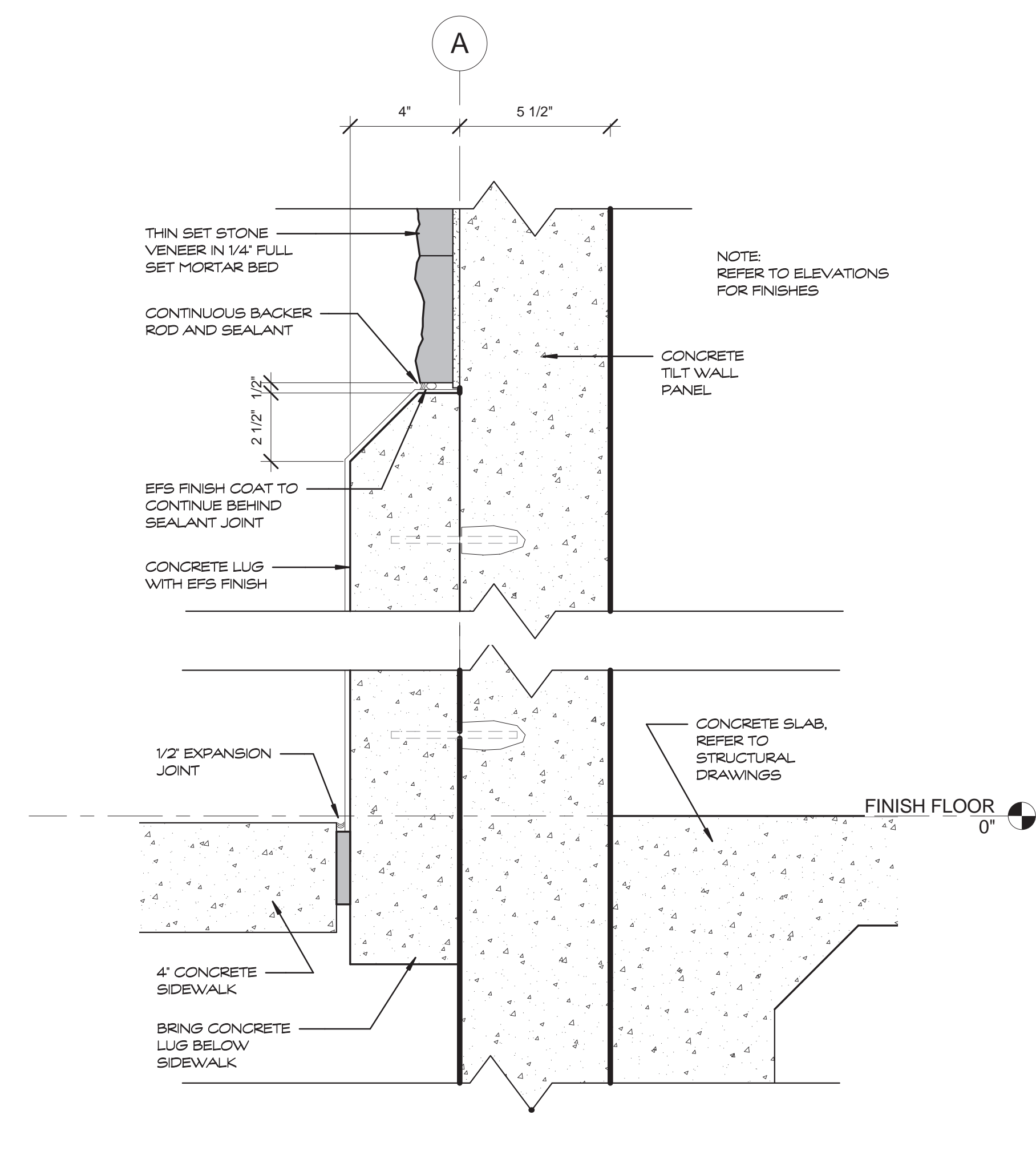
4 EIFS DETAIL
A4-1 SCALE 6" = 1'-0"



5 REVEAL DETAIL
A4-1 SCALE 6" = 1'-0"



6 EIFS BULLNOSE DETAIL
A4-1 SCALE 6" = 1'-0"



7 CONCRETE LUG DETAIL
A4-1 SCALE 3" = 1'-0"

2/24/2009 1:29:55 PM C:\Revit Models\Crossroads\A-HAL-CM-AEP.rvt

Hermes Architects

Members A.I.A.
 1177 West Loop South, Ste. 500
 Houston, Texas 77027
 Tel. 713.785.3644
 www.hermesarchitects.com
 Houston - Dallas - Ft. Worth

INCOMPLETE DRAWING - DO NOT USE FOR REGULATORY APPROVAL, PERMIT OR CONSTRUCTION
 ARCHITECT: RALPH WINDLE
 REGISTRATION #: 17468
 DATE: 02/16/09

LEASE BUILDING AT CROSSROADS MALL
 6906 Wesley Street
 Greenville, Texas
Crossroads
 GREENVILLE PROPERTIES LTD.
 10850 WIL CHIRE BLVD.
 SUITE 1050
 LOS ANGELES, CA 90024

DATE: 02/16/09
 PROJECT NO.: 809500
 DRAWN BY: Author
 CHECKED BY: Checker

SECTIONS & DETAILS

A4-1