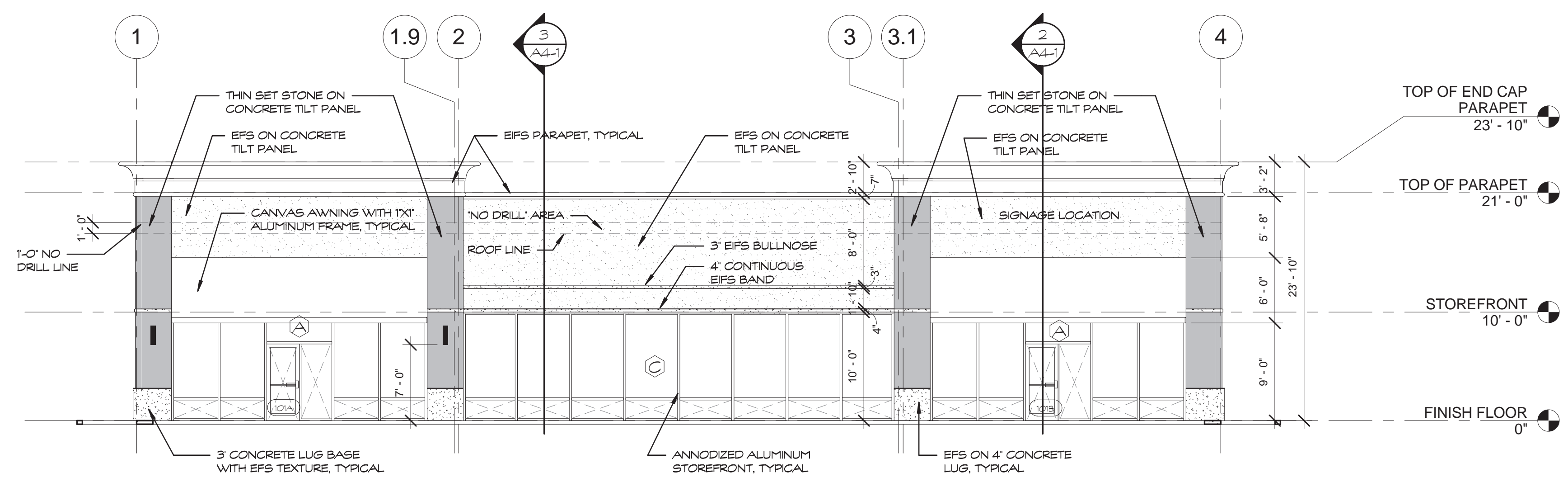


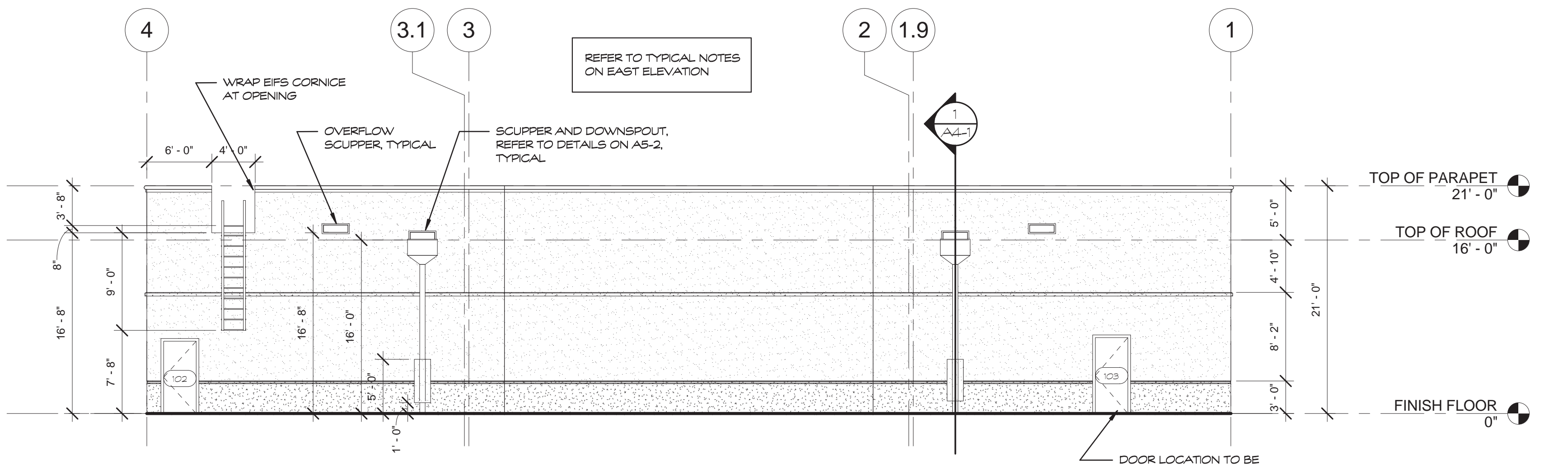
2/24/2009 1:29:31 PM C:\Revit Models\Crossroads\A-HAL-CM-AEP.rvt

MATERIALS LEGEND	
	EFS TEXTURE COAT ON CONCRETE TILT PANEL COLOR =
	EFS TEXTURE COAT AT CONCRETE BASE COLOR =
	EFS PARAPET COLOR =
	THIN SET STONE ON CONCRETE TILT PANEL COLOR = TEXANA GOLD (ALAMO STONE)

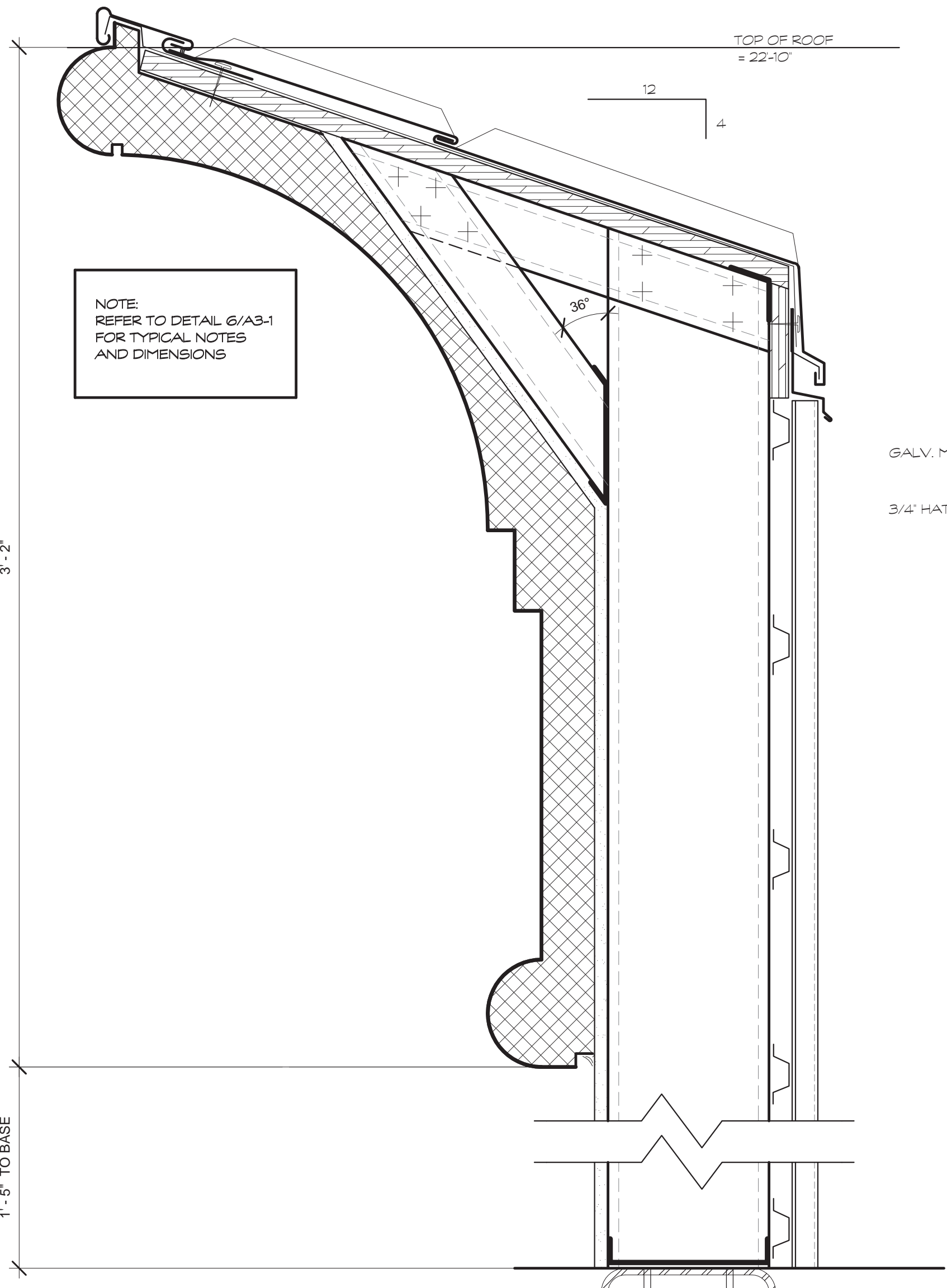
NOTES:  
CANOPIES: REFER TO SHEET A2-1 FOR COLORS AND DETAILS  
STOREFRONT AND EXTERIOR DOORS: REFER TO SHEET A7-1 FOR COLORS AND DETAILS



1 EAST ELEVATION  
A3-1 SCALE 1/8" = 1'-0"

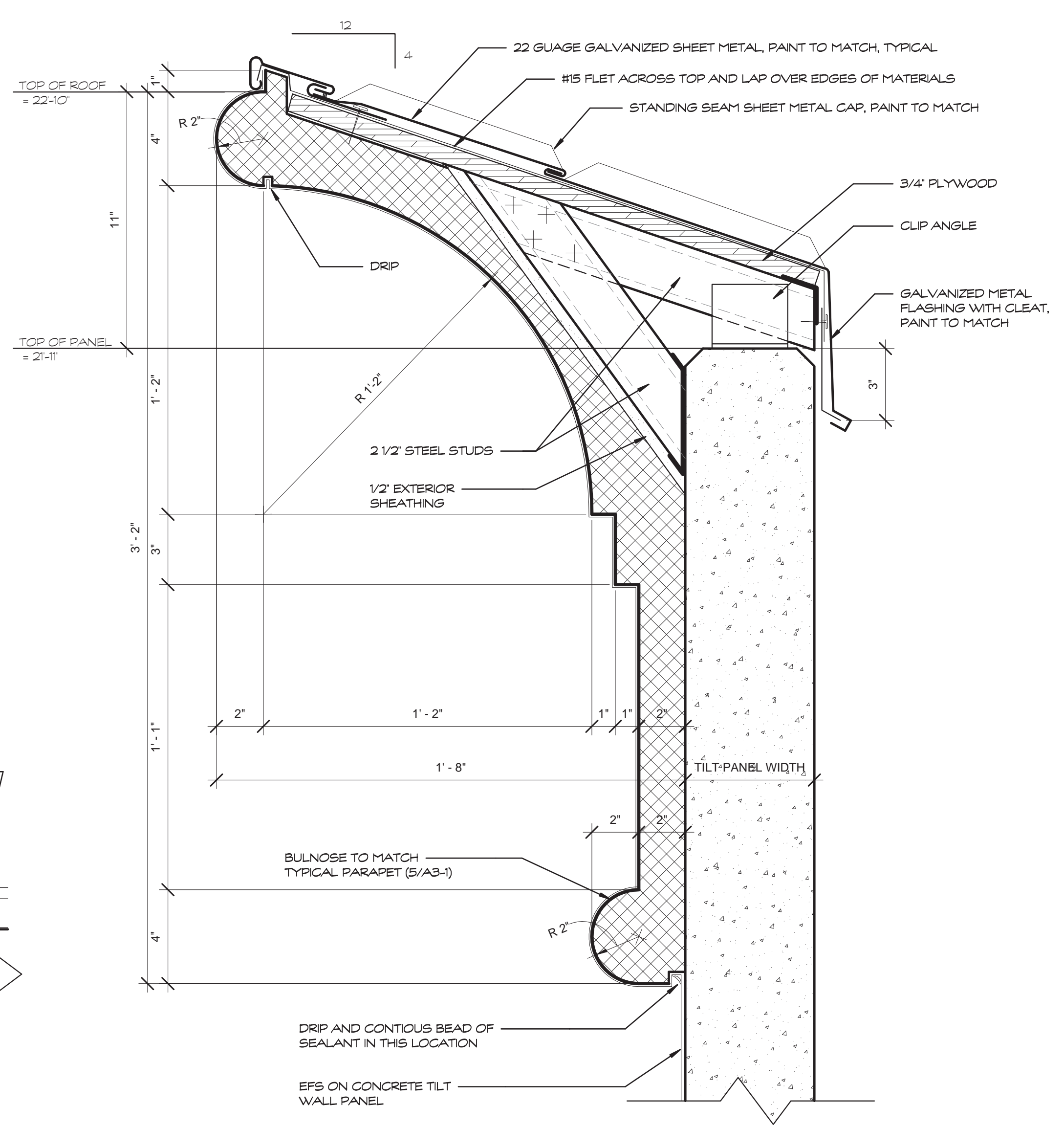


3 WEST ELEVATION  
A3-1 SCALE 1/8" = 1'-0"

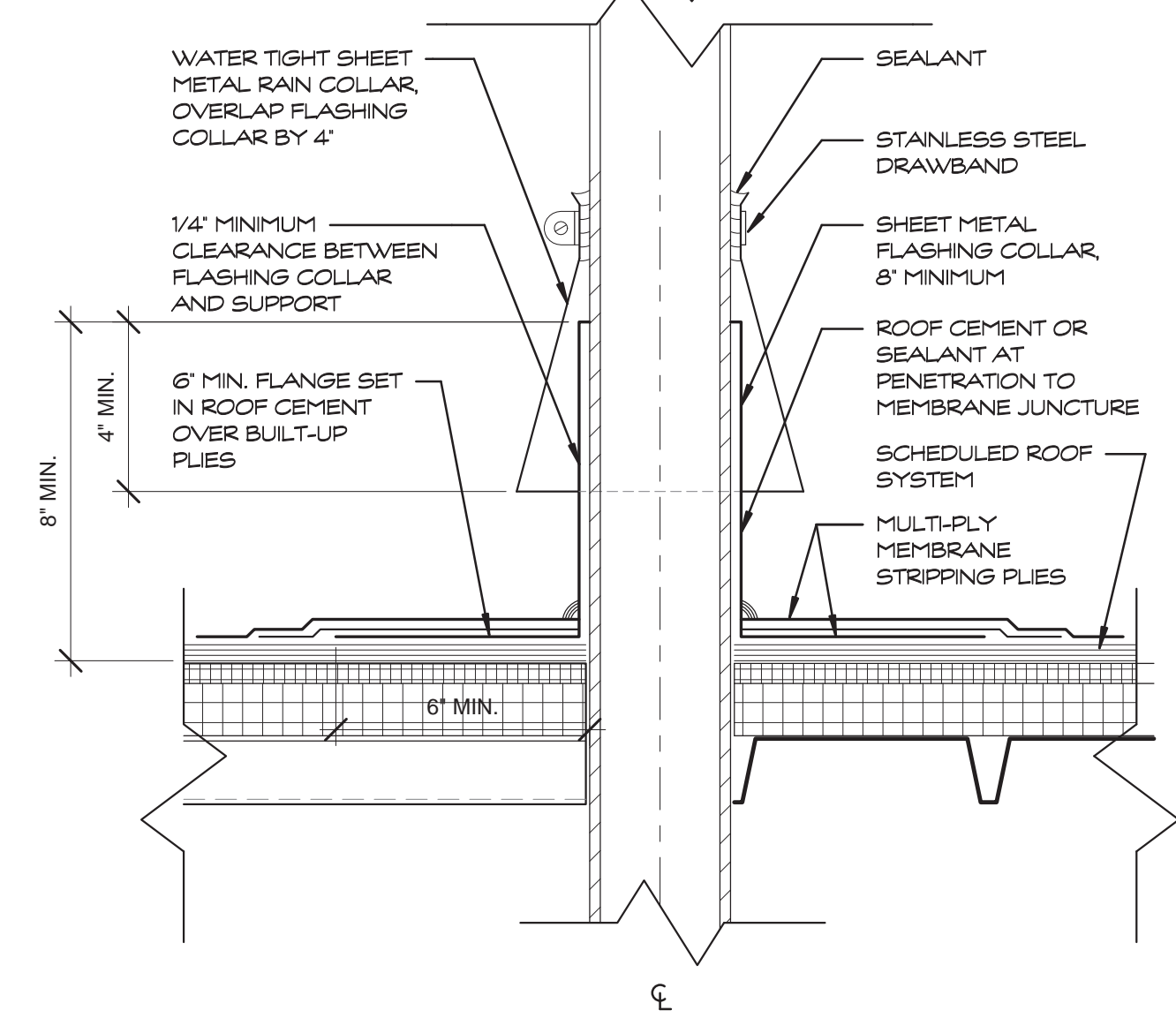


NOTE:  
REFER TO DETAIL 6/A3-1 FOR TYPICAL NOTES AND DIMENSIONS

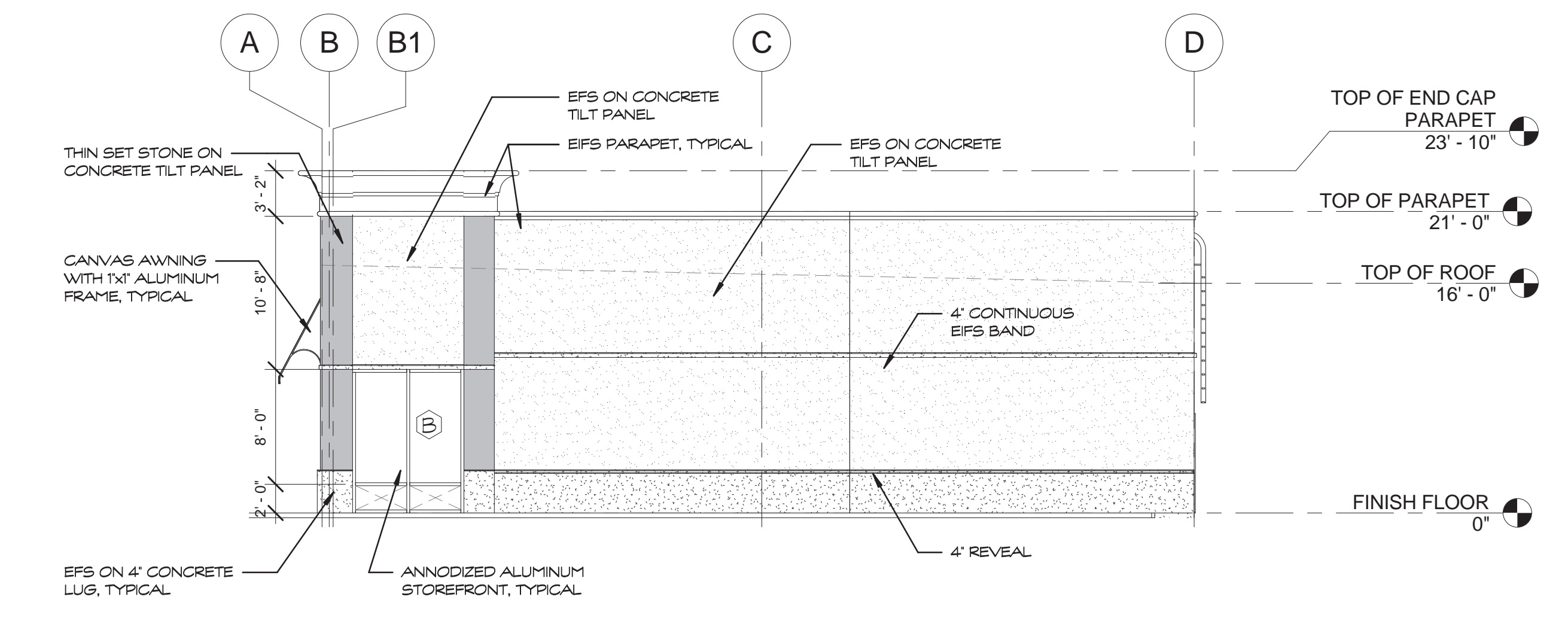
5 TOWER PARAPET  
A3-1 SCALE 3" = 1'-0"



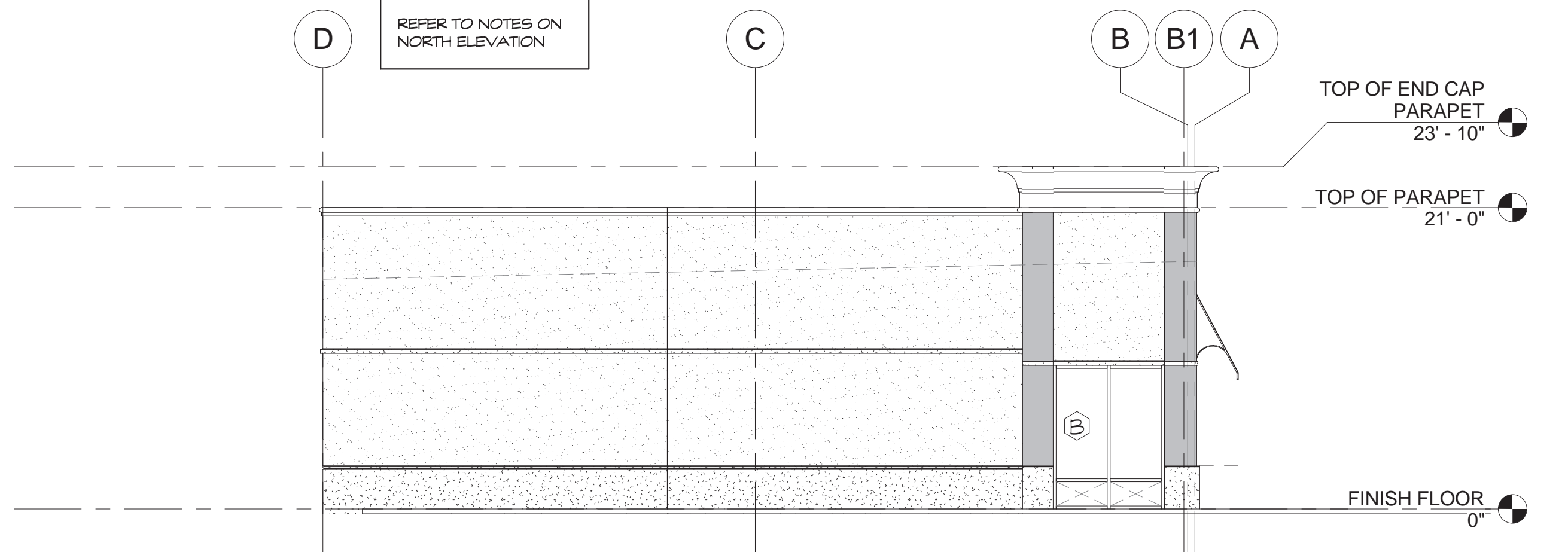
6 TOWER PARAPET AT TILT WALL  
A3-1 SCALE 3" = 1'-0"



7 TOWER PARAPET AT STUD WALL  
A3-1 SCALE 3" = 1'-0"



2 NORTH ELEVATION  
A3-1 SCALE 1/8" = 1'-0"



4 SOUTH ELEVATION  
A3-1 SCALE 1/8" = 1'-0"

**Hermes Architects**

Members A.I.A.  
1177 West Loop South, Ste. 500  
Houston, Texas 77027  
Tel. 713.785.3644  
www.hermesarchitects.com  
Houston • Dallas • Ft. Worth

INCOMPLETE DRAWING -  
DO NOT USE FOR  
REGULATORY APPROVAL,  
PERMIT OR CONSTRUCTION

ARCHITECT: RALPH WINDLE  
REGISTRATION #: 17468  
DATE: 02/16/09

**LEASE BUILDING AT CROSSROADS MALL**  
6906 Wesley Street  
Greenville, Texas

**Crossroads GREENVILLE PROPERTIES LTD.**  
10850 WILCHIRE BLVD.  
SUITE 1050  
LOS ANGELES, CA 90024

DATE: 02/16/09  
PROJECT NO.: 808500  
DRAWN BY: Author  
CHECKED BY: Checker

**ELEVATIONS**

**A3-1**