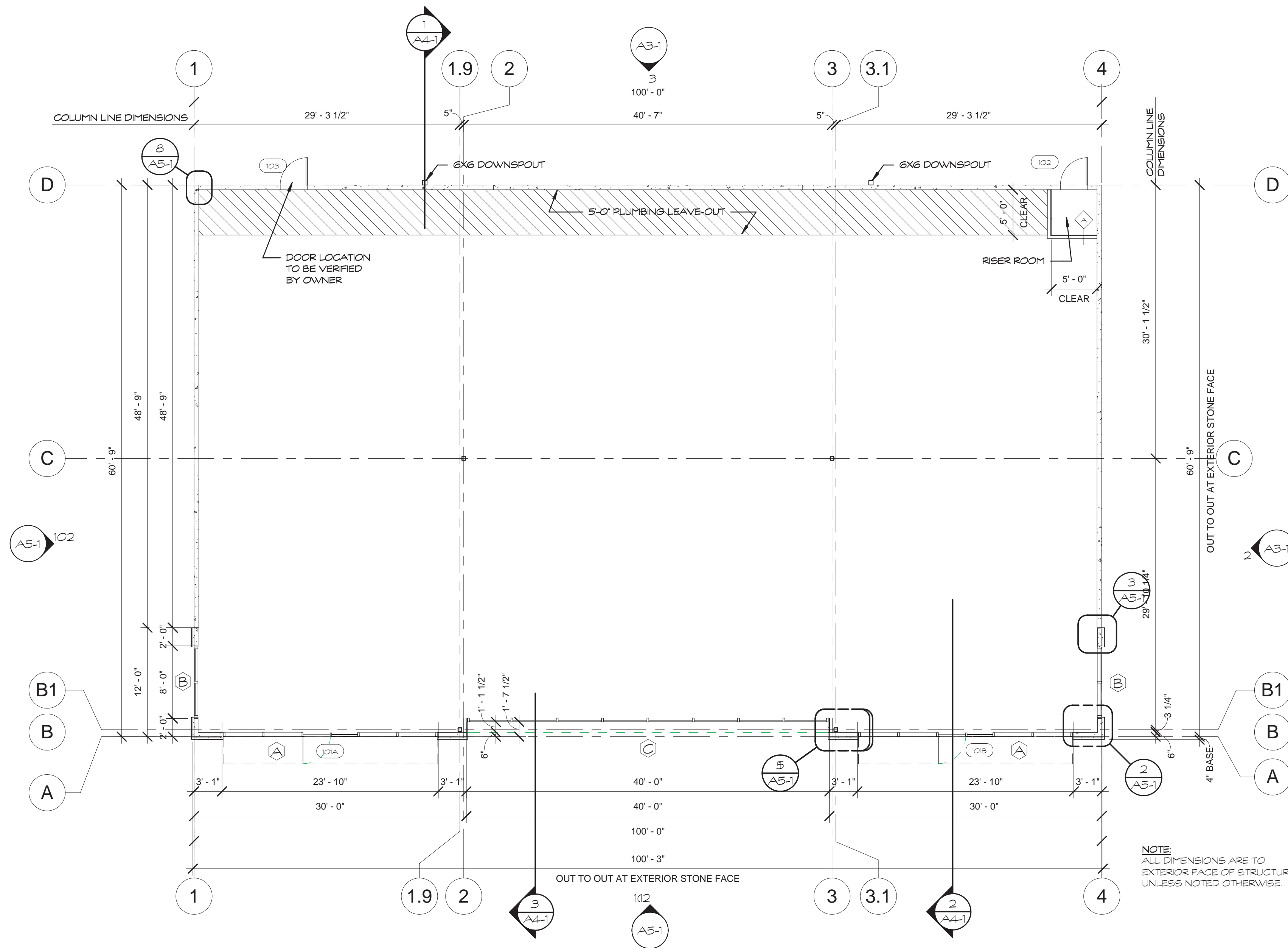


ACCESSIBILITY NOTES:

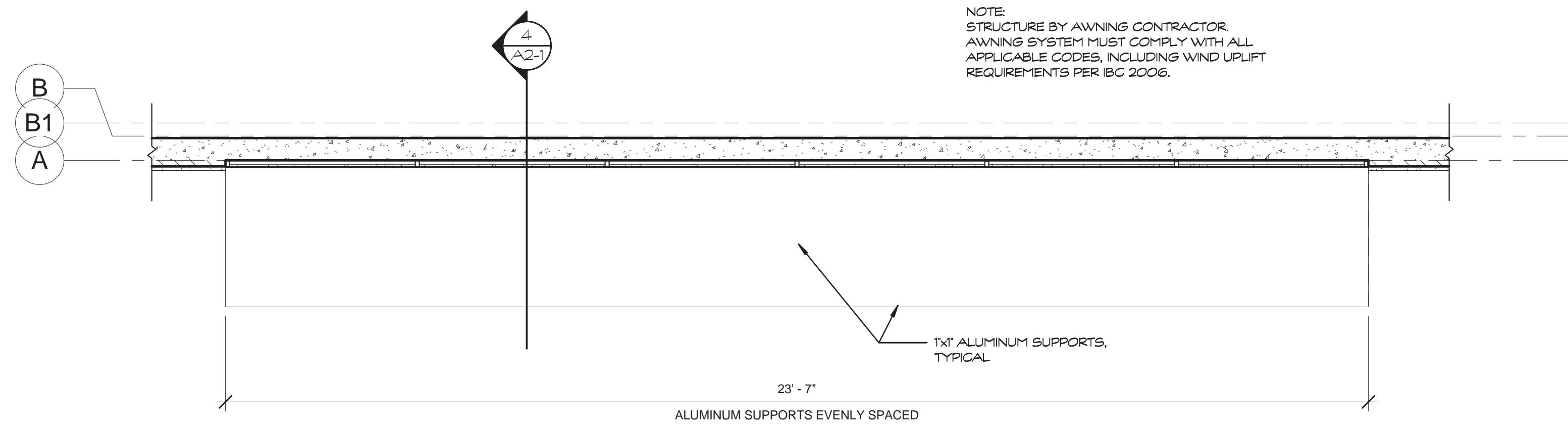
1. MAXIMUM THRESHOLD HEIGHT IS 1/2" WITH A BEVELED SLOPE NO GREATER THAN 1:2.
2. OPERATING DEVICES ON ACCESSIBLE DOORS ARE NO HIGHER THAN 48" AT FINISH FLOOR.
3. DOOR CLOSERS ARE A TYPE LABELED FOR ACCESSIBILITY AND ARE ABLE TO BE ADJUSTED FOR A SWEEP PERIOD SUCH THAT FROM AN OPEN POSITION OF 90 DEGREES, THE DOOR WILL TAKE AT LEAST THREE SECONDS TO MOVE TO AN OPEN POSITION OF APPROXIMATELY 12 DEGREES.
4. DOOR CLOSERS ARE ADJUSTABLE SO THAT THE OPENING FORCE REQUIRED TO PUSH IS 8.5 LBS. MAXIMUM FOR EXTERIOR HINGED DOORS AND 5 LBS. MAXIMUM FOR INTERIOR DOORS. THE FORCE REQUIRED IS MEASURED AS APPLIED PERPENDICULAR TO THE DOOR AT THE OPERATOR OR 30" FROM THE HINGED SIDE.
5. DOORS REQUIRING "HAND TWIST" OPERATION ARE PROVIDED WITH A LEVER TYPE DOOR OPERATOR INSTEAD OF THE TRADITIONAL ROUND KNOB.
6. IF AN ITEM LISTED IN THE HARDWARE SCHEDULE IS NOT AN ACCESSIBLE PRODUCT, IT IS THE RESPONSIBILITY OF THE GENERAL CONTRACTOR TO NOTIFY THE ARCHITECT OF SUCH AND PROVIDE FOR THE ARCHITECT'S REVIEW. IN THE FRONT OF SHOP DRAWING SUBMITTALS, AN EQUIVALENT ACCESSIBLE PRODUCT IN THE EVENT THAT SHOP DRAWINGS ARE NOT SUBMITTED FOR FINISH HARDWARE, THE GENERAL CONTRACTOR IS RESPONSIBLE FOR PROVIDING ACCESSIBLE HARDWARE.
7. IN GENERAL, CONTROL MECHANISMS REQUIRING USE BY BUILDING OCCUPANTS ARE MOUNTED AT 48" ABOVE FINISH FLOOR MAXIMUM TO THE HIGHEST OPERABLE PART OF OBJECT. THE MINIMUM MOUNTING HEIGHT OF A CONTROL MECHANISM IS 15" ABOVE FINISH FLOOR TO THE LOWEST OPERABLE PART OF OBJECT, UNLESS OTHERWISE NOTED. TYPICAL ITEMS INCLUDE BUT NOT LIMITED TO ARE: ELECTRICAL SWITCHES; TELEPHONES/TDD'S; THERMOSTATS; ELECTRICAL OUTLETS; DATA TERMINALS; ALARM PULL-STATIONS; AND DOOR BUZZERS.
8. SIGNAGE AT DOORS AND OTHER AREAS REQUIRED TO BE ACCESSIBLE ARE TO COMPLY WITH THE FOLLOWING CRITERIA:
 - 8a. COLOR AND CONTRAST: CHARACTERS AND BACKGROUNDS HAVE A NON-GLARE FINISH. CHARACTERS AND THEIR BACKGROUNDS HAVE COLORS CONTRASTING TO EACH OTHER, EITHER A DARK CHARACTER ON A LIGHT BACKGROUND OR VICE VERSA.
 - 8b. CHARACTER PROTECTION: HEIGHT AND NUMBERS ON SIGNS ARE A WIDTH TO HEIGHT RATIO BETWEEN 3:5 AND 1:1 AND A STROKE-WIDTH-TO-HEIGHT RATIO BETWEEN 1:5 AND 1:10.
 - 8c. RAISE CHARACTERS AND PICTOGRAMS-LETTERS AND NUMBERS ARE RAISED 1/32" MINIMUM UPPERCASE, SIMPLE TYPEFACE ACCOMPANIED WITH GRADE 2 BRAILLE RAISED CHARACTERS ARE BETWEEN 5/8" AND 2" IN HEIGHT. PICTOGRAM, WHEN USED, HAS A VERBAL DESCRIPTION DIRECTLY BELOW PICTOGRAM. PICTOGRAM BORDER IS 6" HIGH MINIMUM.

FLOOR PLAN NOTES:

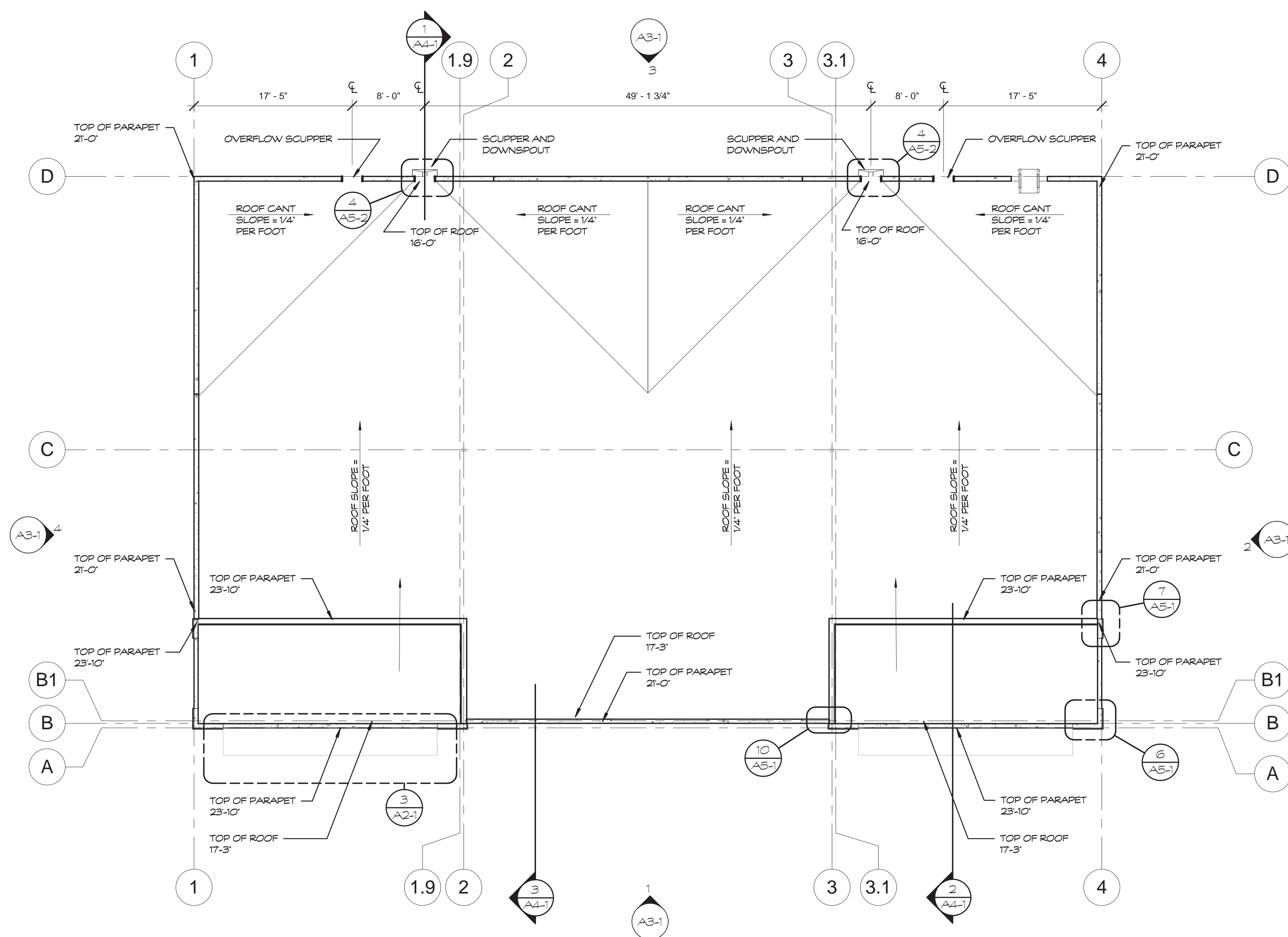
1. DO NOT SCALE THESE DRAWINGS FOR DIMENSIONAL INFORMATION. REFER TO DIMENSIONS ON THE FLOOR PLAN AND THE ENLARGED PLANS. IF THERE IS A CONFLICT WITH THE PLAN DIMENSIONS OR AN EXISTING FIELD CONDITION, CONTACT THE ARCHITECT.
2. PROVIDE VAPOR BARRIER UNDER ALL FLOOR SLABS, AND LEVEL FILL PER SPECIFICATIONS.
3. E.I.F.S. FINISH COAT TO COVER ALL TOP, BOTTOM AND EDGE CONDITIONS. THERE MUST BE NO EXPOSED MESH OR FOAM AT ANY PENETRATION.
4. WHERE REQUIRED BY CODE, ALUMINUM VERTICAL MULLIONS TO RECEIVE STEEL STIFFENERS TO ACHIEVE 20 LBS. WIND LOAD. THE 1/4" GLASS SHALL HAVE A MAXIMUM SIZE OF 43 SQUARE FEET.
5. ALUMINUM AND GLASS STOREFRONT SHALL BE 1-3/4" x 4-1/2" BLACK ANODIZED ALUMINUM SECTIONS WITH 1/4" CLEAR FLOAT ANNEALED AND TEMPERED GLASS PER CODE.
6. ALL FIRE WALL PENETRATIONS SHALL BE SEALED WITH FIRE RATED FOAM SEALANT (BOTH SIDES OF WALL). SEALANT TYPE SHALL BE A COMPATIBLE RATINGS TO THE WALL SYSTEM.
7. REFER TO BUILDING ELEVATION DRAWINGS FOR FINISH MATERIAL CALL-OUTS AND PAINT REQUIREMENTS.



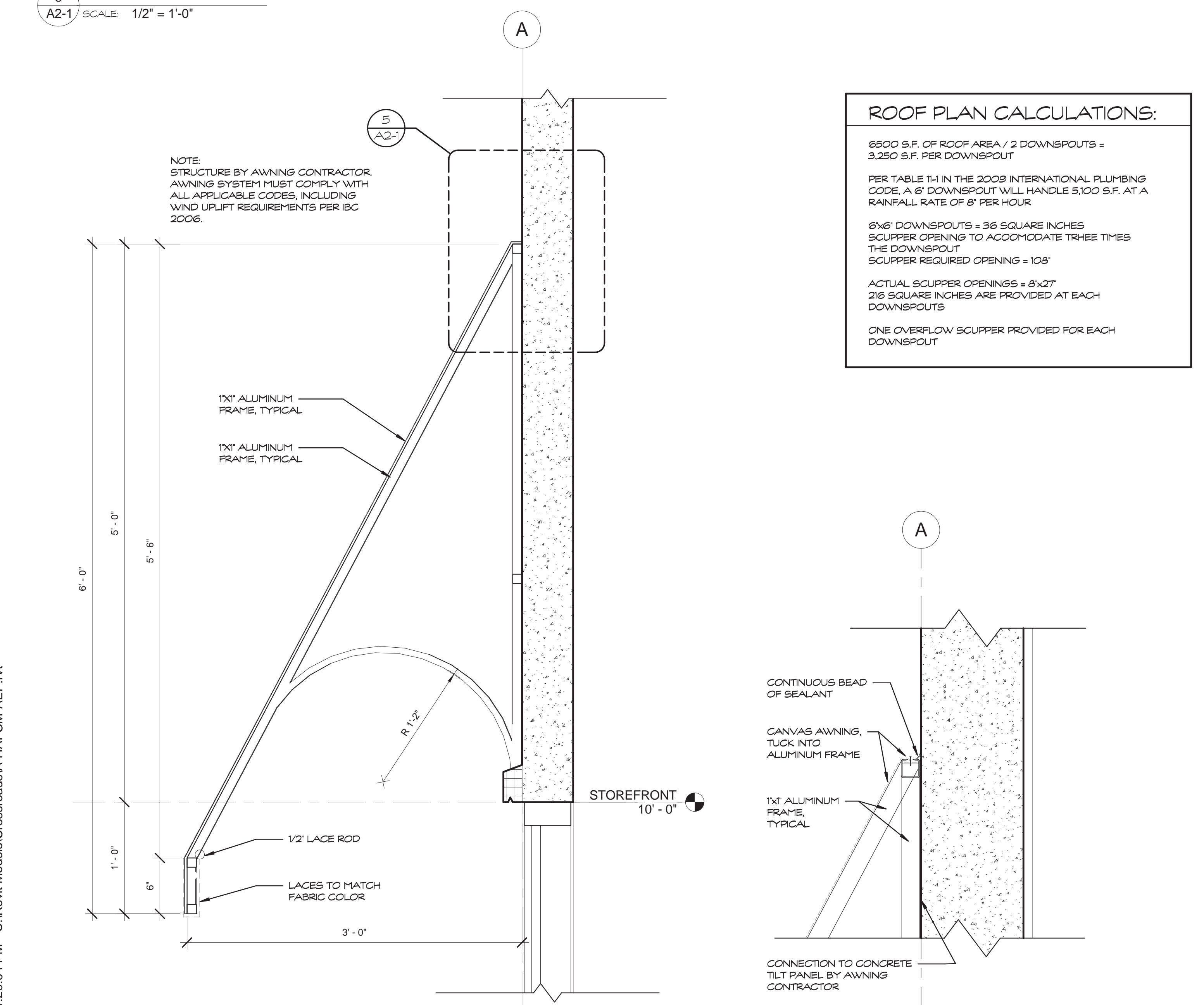
1 FLOOR PLAN
A2-1 SCALE: 1/8" = 1'-0"



3 CANOPY PLAN
A2-1 SCALE: 1/2" = 1'-0"



2 ROOF PLAN
A2-1 SCALE: 1/8" = 1'-0"



4 CANOPY SECTION
A2-1 SCALE: 1 1/2" = 1'-0"

5 CANOPY DETAIL
A2-1 SCALE: 3" = 1'-0"

ROOF PLAN CALCULATIONS:

6500 S.F. OF ROOF AREA / 2 DOWNSPOUTS = 3,250 S.F. PER DOWNSPOUT

PER TABLE 11.1 IN THE 2009 INTERNATIONAL PLUMBING CODE, A 6" DOWNSPOUT WILL HANDLE 5,100 S.F. AT A RAINFALL RATE OF 8" PER HOUR

6" DOWNSPOUTS = 36 SQUARE INCHES SCUPPER OPENING TO ACCOMMODATE THREE TIMES THE DOWNSPOUT SCUPPER REQUIRED OPENING = 108"

ACTUAL SCUPPER OPENINGS = 8x27 216 SQUARE INCHES ARE PROVIDED AT EACH DOWNSPOUTS

ONE OVERFLOW SCUPPER PROVIDED FOR EACH DOWNSPOUT

Hermes Architects

Members A.I.A.
1177 West Loop South, Ste. 500
Houston, Texas 77027
Tel. 713.785.3644
www.hermesarchitects.com
Houston • Dallas • Fort Worth

INCOMPLETE DRAWING - DO NOT USE FOR REGULATORY APPROVAL, PERMIT OR CONSTRUCTION

ARCHITECT: RALPH WINDLE
REGISTRATION #: 17468
DATE: 02/16/09

LEASE BUILDING AT CROSSROADS MALL
6906 Wesley Street
Greenville, Texas

Crossroads GREENVILLE PROPERTIES LTD.
10850 WILCHIRE BLVD.
SUITE 1050
LOS ANGELES, CA 90024

DATE: 02/16/09
PROJECT NO.: 808500
DRAWN BY: AEP
CHECKED BY: Checker

PLANS, NOTES, & AWNING DETAILS

A2-1