

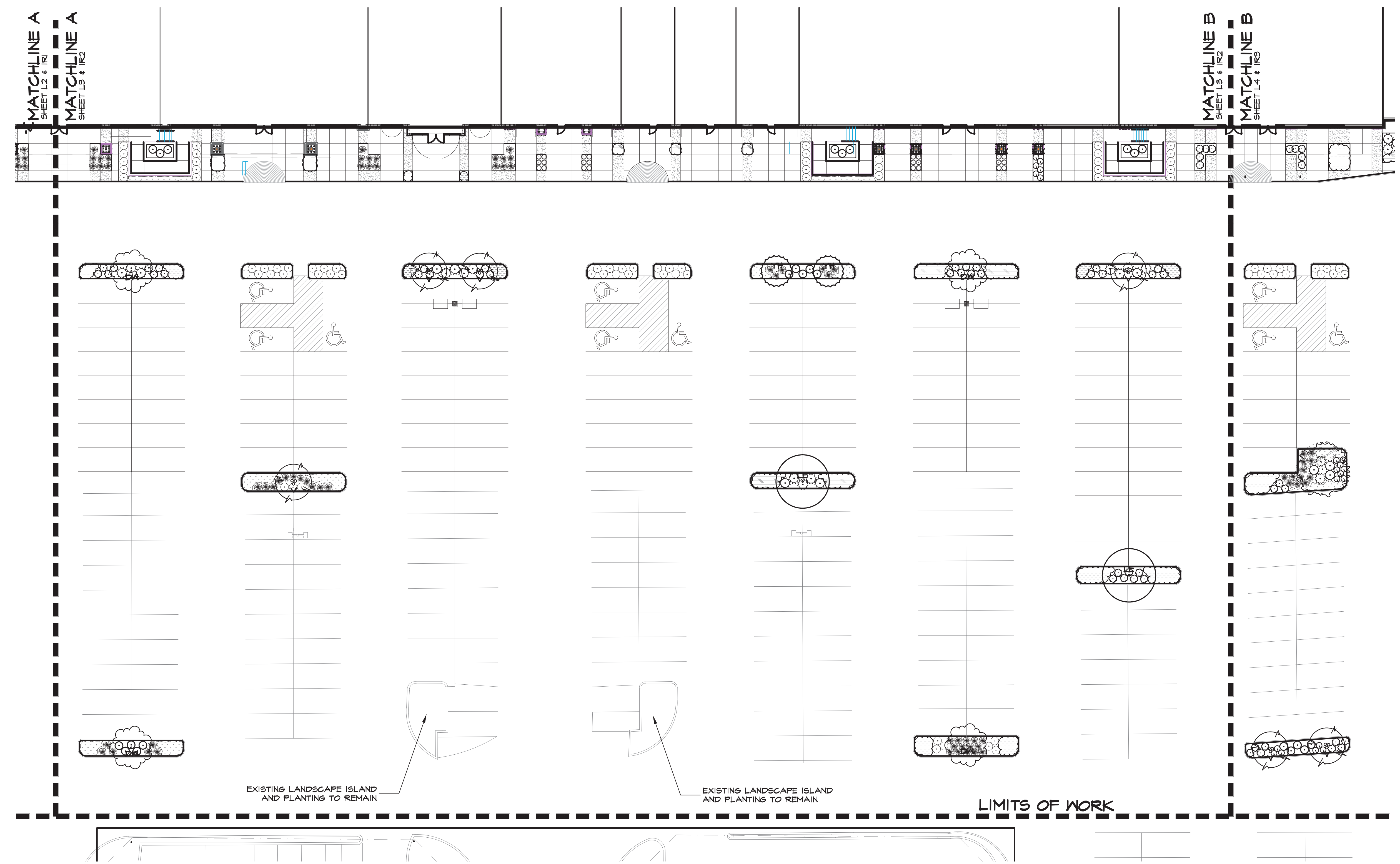
This document is an instrument of service protected by the copyright law of the United States of America, 17 U.S.C. § 102, and shall not be copied or reproduced without the express written consent of Hermes Architects, Inc.



**CROSSROADS MALL RENOVATION**  
GREENVILLE PROPERTIES, LTD.  
6534 WESLEY STREET  
GREENVILLE, TEXAS 75401  
10850 WILCHIRE BLVD., SUITE 1050  
LOS ANGELES, CA 90024

**Crossroads**  
GREENVILLE PROPERTIES LTD.

DATE: June 16, 2011  
PROJECT NO.: 809501  
DRAWN BY:  
CHECKED BY:



**LANDSCAPE LEGEND**

	EXISTING LANDSCAPE ISLAND TREE TO REMAIN UNDISTURBED		VITEX TREE / VITEX ASNUS-CASTUS (3" CALIPER)		DWARF FOUNTAIN GRASS / FENNISETUM ALOPECUROIDES 'HAMELN' (2 GALLON, PLANTS SPACED 24" O.C.)
	LACEBARK ELM / ULMUS PARVIFOLIA (3" CALIPER)		FRINGE FLOKIER / LOROPETALUM CHINENSE (3 GALLON)		BLUE PACIFIC JUNIPER / JUNIPERUS HORIZONTALIS (3 GALLON, PLANTS SPACED 36" O.C.)
	DESERT WILLOW / CHILOPSIS LINEARIS (3" CALIPER)		RED YUCCA / HESPERALOE PARVIFLORA (3 GALLON)		MEXICAN FEATHER GRASS / STIPA TENNISSIMA (1 GALLON, PLANTS SPACED 12" O.C.)
	YAUPON HOLLY / ILEX VOMITORIA (3" CALIPER)		DWARF MAIDEN GRASS / MISCANTHUS SINENSIS 'ADAGIO' (3 GALLON)		
			KNOCKOUT ROSE / ROSA SPP. (3 GALLON)		
			DWARF YAUPON HOLLY / ILEX VOMITORIA 'NANA' (3 GALLON)		
			INDIAN HANTHORN 'SNOW' / RAPHIOLEPSIS UMBELLATA 'SNOW WHITE' (3 GALLON)		
			AFRICAN IRIS / DIETES IRIDIODES (3 GALLON)		

**LANDSCAPE NOTES**

- ALL SIZES OF PLANT MATERIAL CALLED OUT IN LANDSCAPE LEGEND TO BE THE SIZE OF PLANT MATERIAL AT TIME OF PLANTING.
- ALL REQUIRED LANDSCAPE AREAS SHALL BE PROVIDED WITH AN AUTOMATIC UNDERGROUND IRRIGATION SYSTEM WITH RAIN AND FREEZE SENSORS AND EVAPOTRANSPIRATION (ET) WEATHER BASED CONTROLLER AND SAID IRRIGATION SYSTEM SHALL BE DESIGNED BY A QUALIFIED PROFESSIONAL AND INSTALLED BY A LICENSED IRRIGATOR.
- ALL LANDSCAPE BEDS IN THE PARKING LOT SHALL BE SURROUNDED BY A 6" CONCRETE CURB; REFER TO ARCH. SITE PLAN TO CONFIRM. SAID LANDSCAPE BEDS SHALL SLOPE TO DRAIN TOWARDS THE PARKING LOT AT MINIMAL SLOPE.
- ALL LANDSCAPE BEDS AT THE ENTRANCE OF THE MALL SHALL SLOPE TO DRAIN TOWARDS THE PARKING LOT, AND SHALL NOT IMPERE STORM WATER CIRCULATION AS DESIGNED BY OTHER TRADES.
- UNLESS NOTED ON DEMOLITION PLANS, ALL EXISTING PLANTING BEDS AND TREES ARE TO BE PRESERVED. CONTRACTOR SHALL PROVIDE NECESSARY MEANS OF PROTECTIVE FENCING FOR PRESERVATION OF ALL TREES AND SHRUBS. THE CONTRACTOR SHALL BE RESPONSIBLE FOR REPAIRING ANY DAMAGES TREES, SHRUBS, AND GROUNDCOVER THAT ARE SHOWN TO REMAIN.