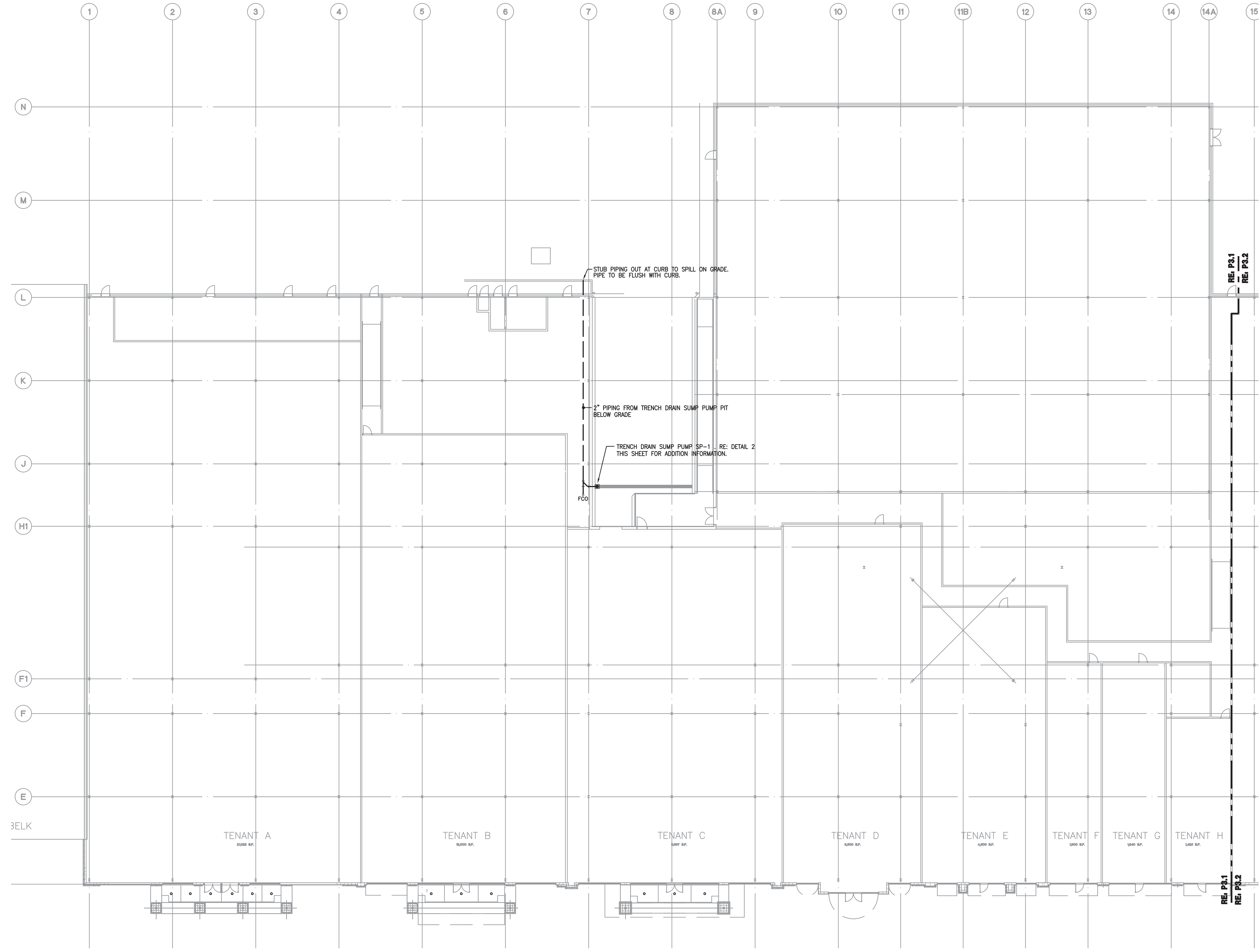


FREEZE PROTECTION NOTE:
 IN COLD WEATHER CLIMATES, DRAIN PIPING AND PUMP SHALL BE PROTECTED AGAINST FREEZING. TO PROTECT THE PUMP, INSTALL BELOW FREEZING LEVEL AND TO PROTECT THE DRAIN PIPES, INSULATE PIPING AND/OR PROVIDE HEAT TRACE. COORDINATE WITH ELECTRICAL WHEN HEAT TRACE IS USED.

SPECIFICATIONS:
 SUMP PUMP (SP-1) SHALL BE ZOELLER FLOW-MATE 98 SERIES 1/2 H.P., 120 V, 50 GPM @ 10 FT. OF HEAD OR EQUAL, WITH FLOAT SWITCH SUITABLE FOR LINE VOLTAGE. PUMP SHALL BE EQUIPPED WITH 20 FEET OF WATER-PROOF CORD AND PLUG. PUMP DISCHARGE PIPING SHALL BE 2\"/>

02 SUMP PUMP DETAIL
 SCALE: N.T.S.



Hermes Architects
 Members A.I.A.
 1177 West Loop South, Ste. 500
 Houston, Texas 77027
 Tel: 713-785-3644
 www.hermesarchitects.com
 Houston • Dallas • Ft. Worth



CROSSROADS MALL RENOVATION
 GREENVILLE
 PROPERTIES, L.T.D.
 6834 WESLEY STREET
 GREENVILLE, TEXAS 75401
 1880 WILCHIRE BLVD.
 SUITE 1050
 LOS ANGELES, CA 90024

Crossroads
 GREENVILLE PROPERTIES LTD.

DATE	June 16, 2011
PROJECT NO.	809501
DRAWN BY	
CHECKED BY	

FLOOR PLAN PLUMBING

01 FLOOR PLAN - PLUMBING
 SCALE: 1/16"=1'-0"

KME
 KALMANS MARSHALL ENGINEERING, INC.
 HOUSTON | DALLAS/FT. WORTH | BATON ROUGE
 1423 Overway Drive, Suite 840
 Irving, TX 75038 (972) 812-1270
 REGISTRATION # F-4111
 KME PROJECT # 0301003