

ITEMS IN RED AND INDICATED WITH A CLOUD ARE BY WINDLE + VOLPE ARCHITECTS



Hermes Architects
Members A.I.A.
1177 West Loop South, Ste. 500
Houston, Texas 77027
Tel. 713-785-3644
www.hermesarchitects.com
Houston - Dallas - Ft. Worth

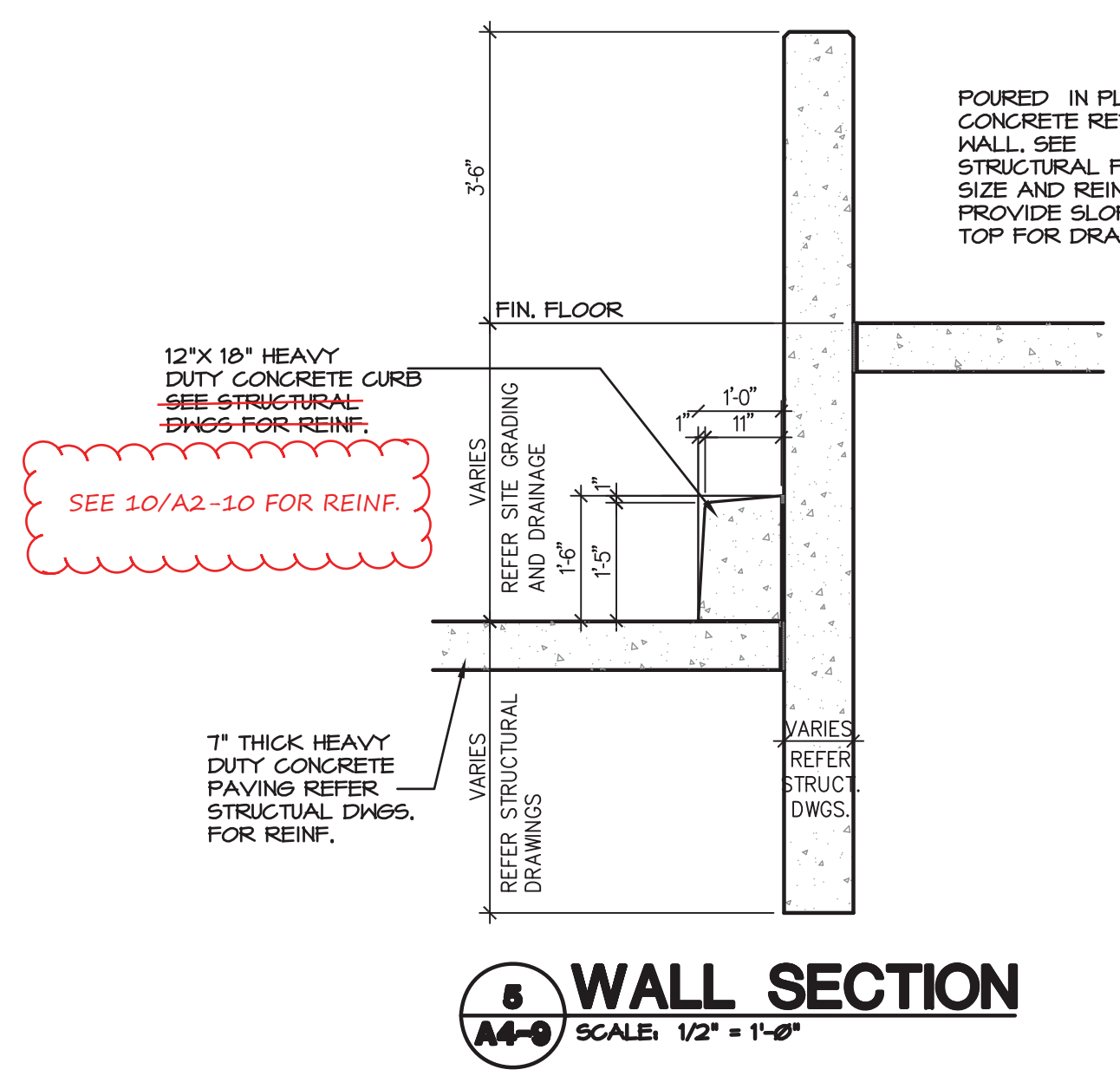
This document is an instrument of service protected by the copyright law of the United States of America, 17 U.S.C. § 102, and shall not be copied or reproduced without the express written consent of Hermes Architects, Inc.



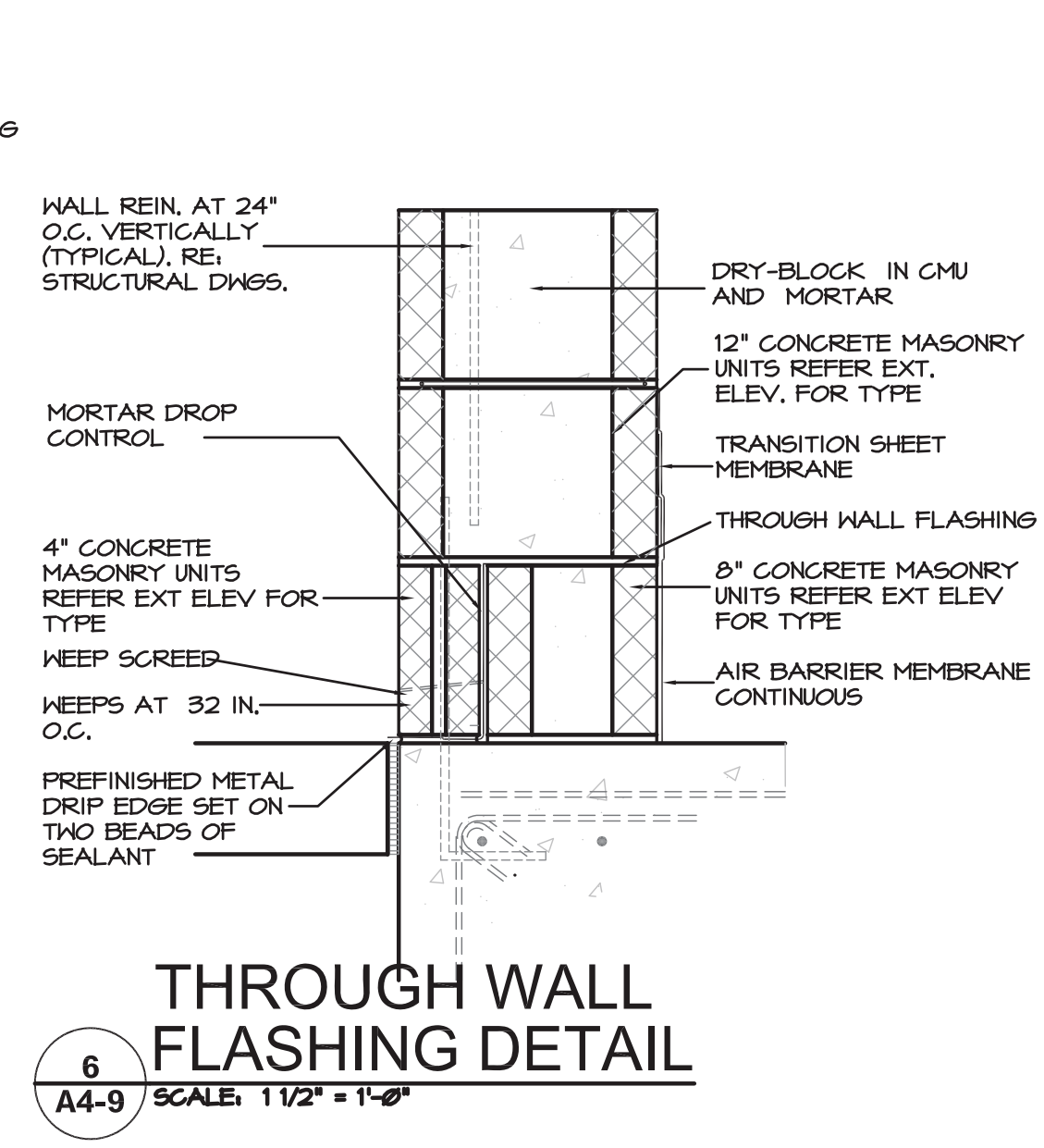
Crossroads Properties Ltd.
CROSSROADS MALL RENOVATION
6834 WESLEY STREET
GREENVILLE, TEXAS 75401
GREENVILLE PROPERTIES, LTD.
10850 WILCHRE BLVD.
SUITE 1050
LOS ANGELES, CA 90024

DATE: June 7, 2011
PROJECT NO.: 809501
DRAWN BY: --
CHECKED BY: --

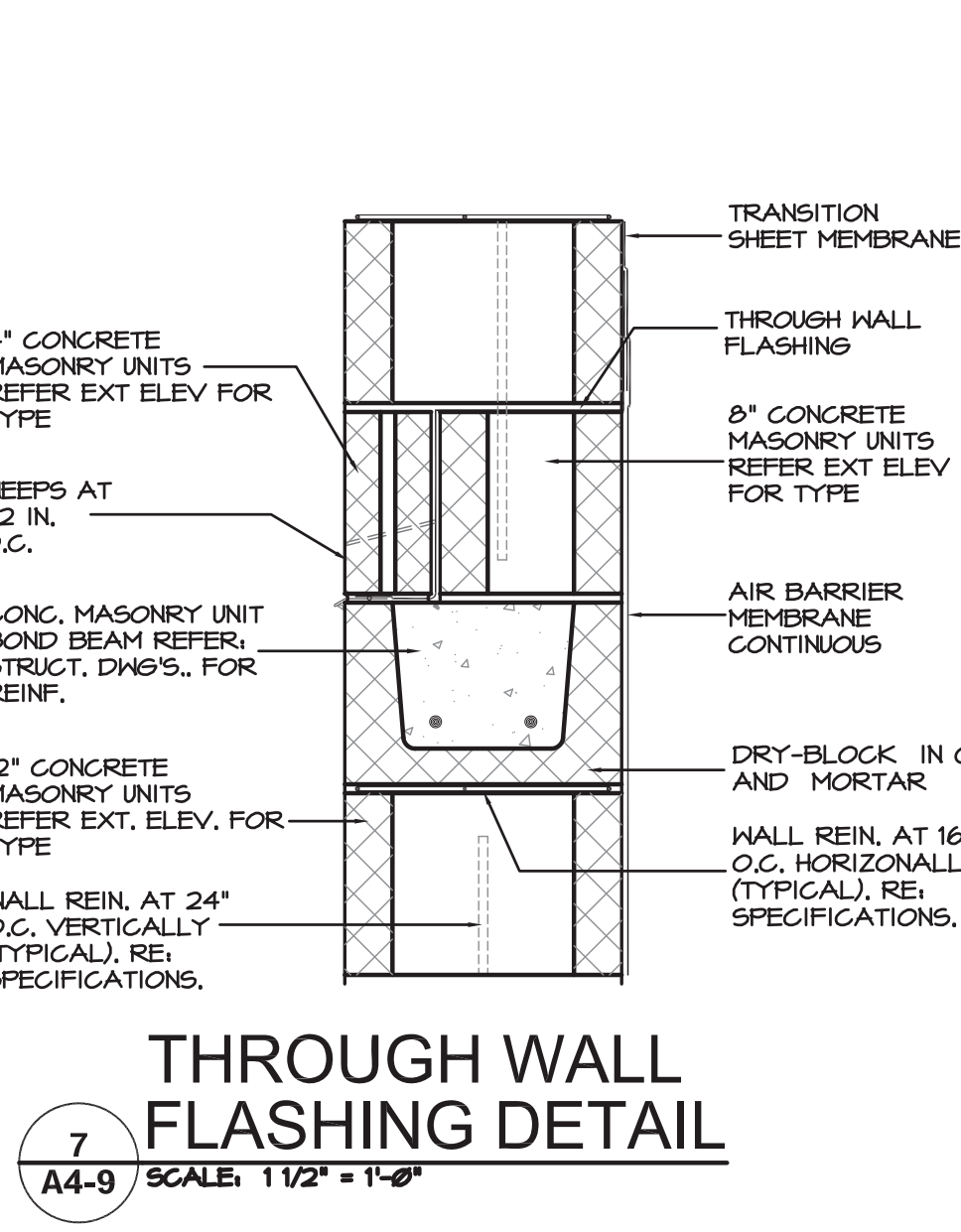
Exterior Wall Sections



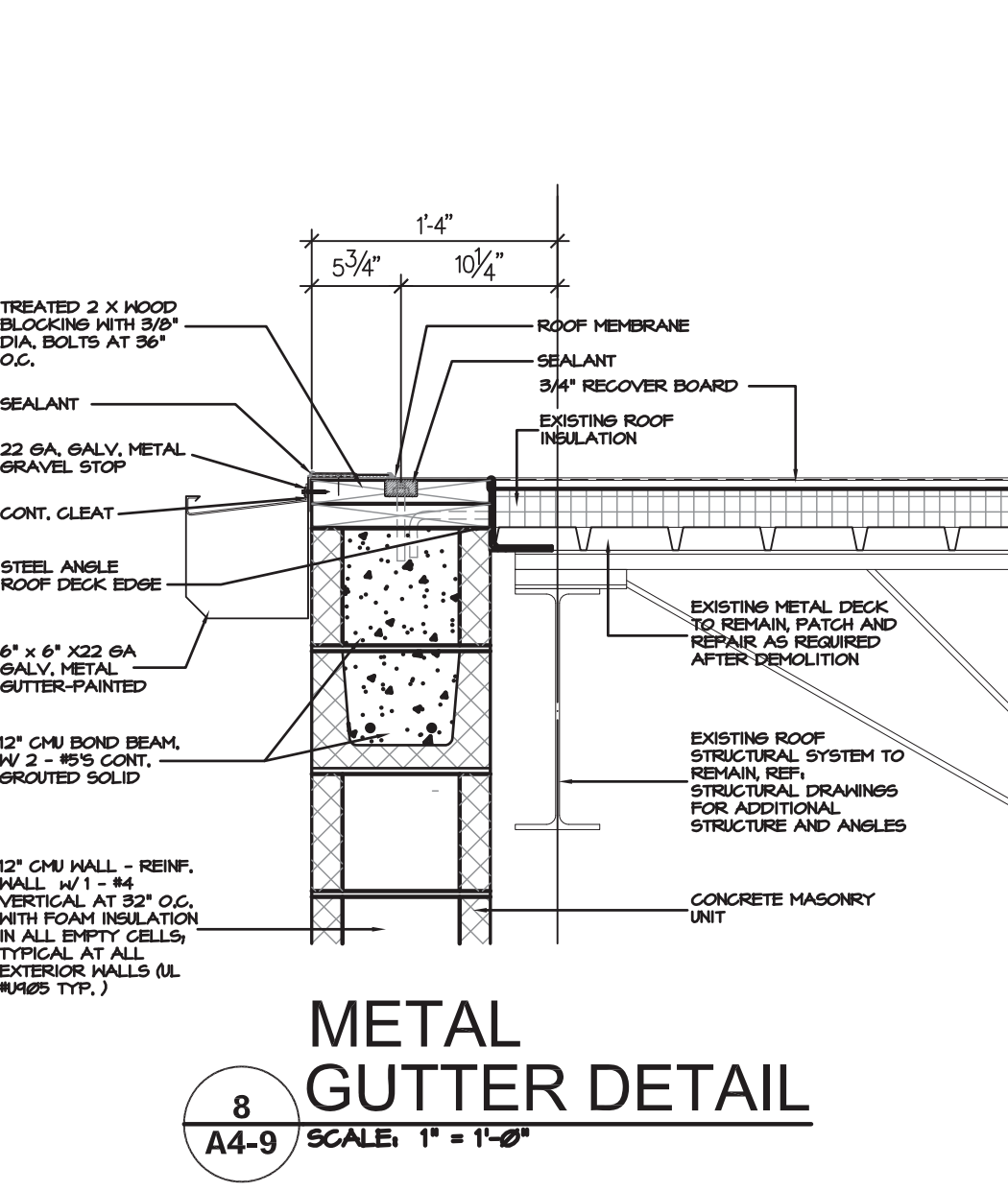
6 WALL SECTION
SCALE: 1/2" = 1'-0"



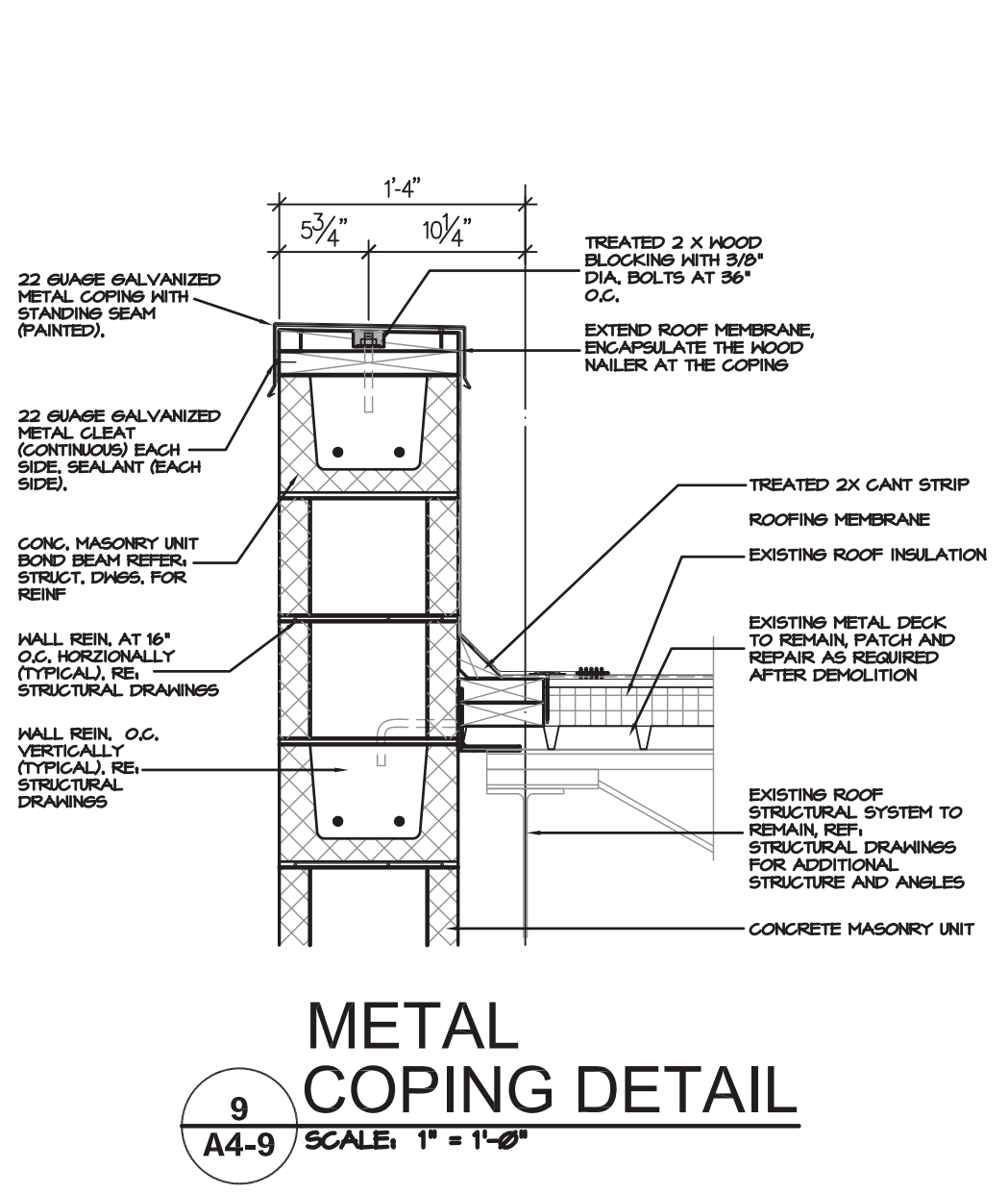
6 FLASHING DETAIL
SCALE: 1/2" = 1'-0"



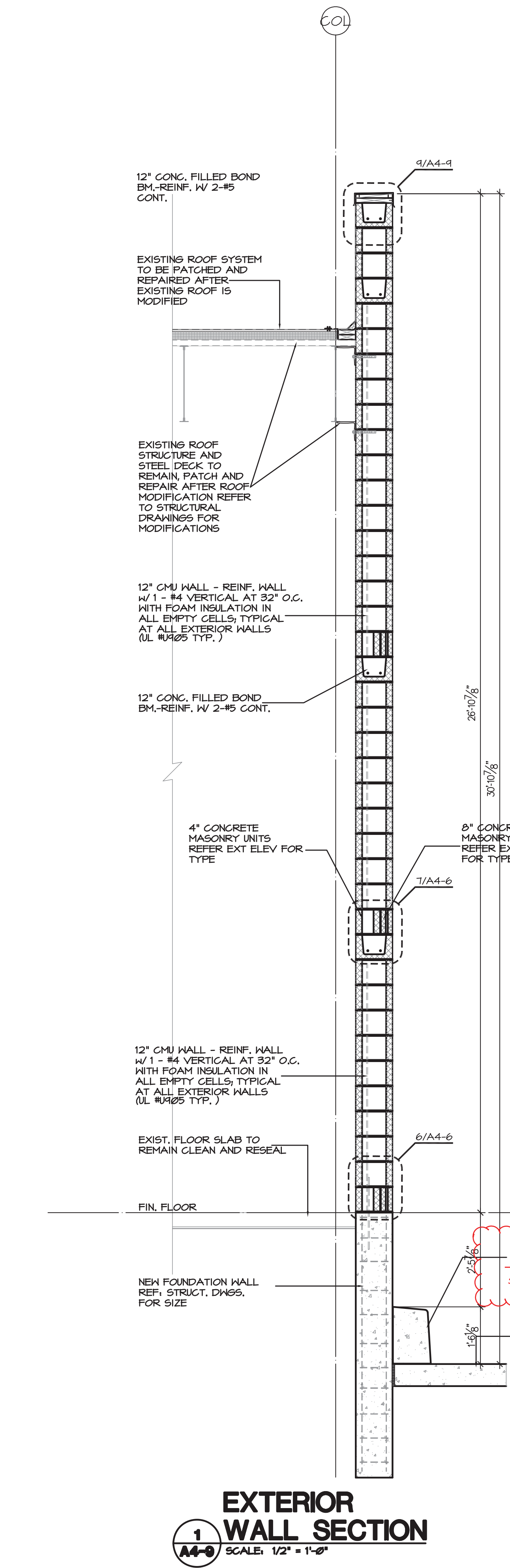
7 FLASHING DETAIL
SCALE: 1/2" = 1'-0"



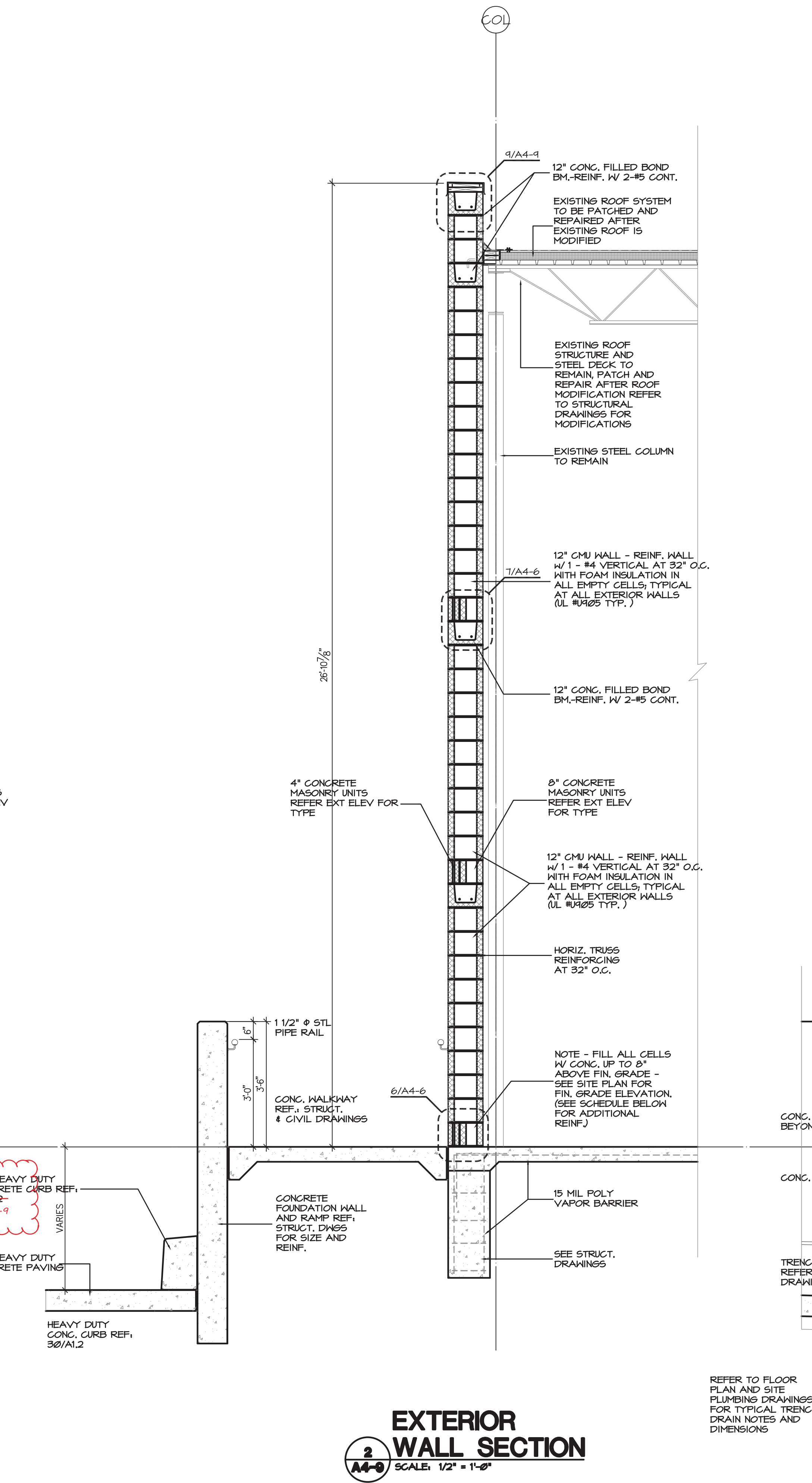
8 METAL GUTTER DETAIL
SCALE: 1" = 1'-0"



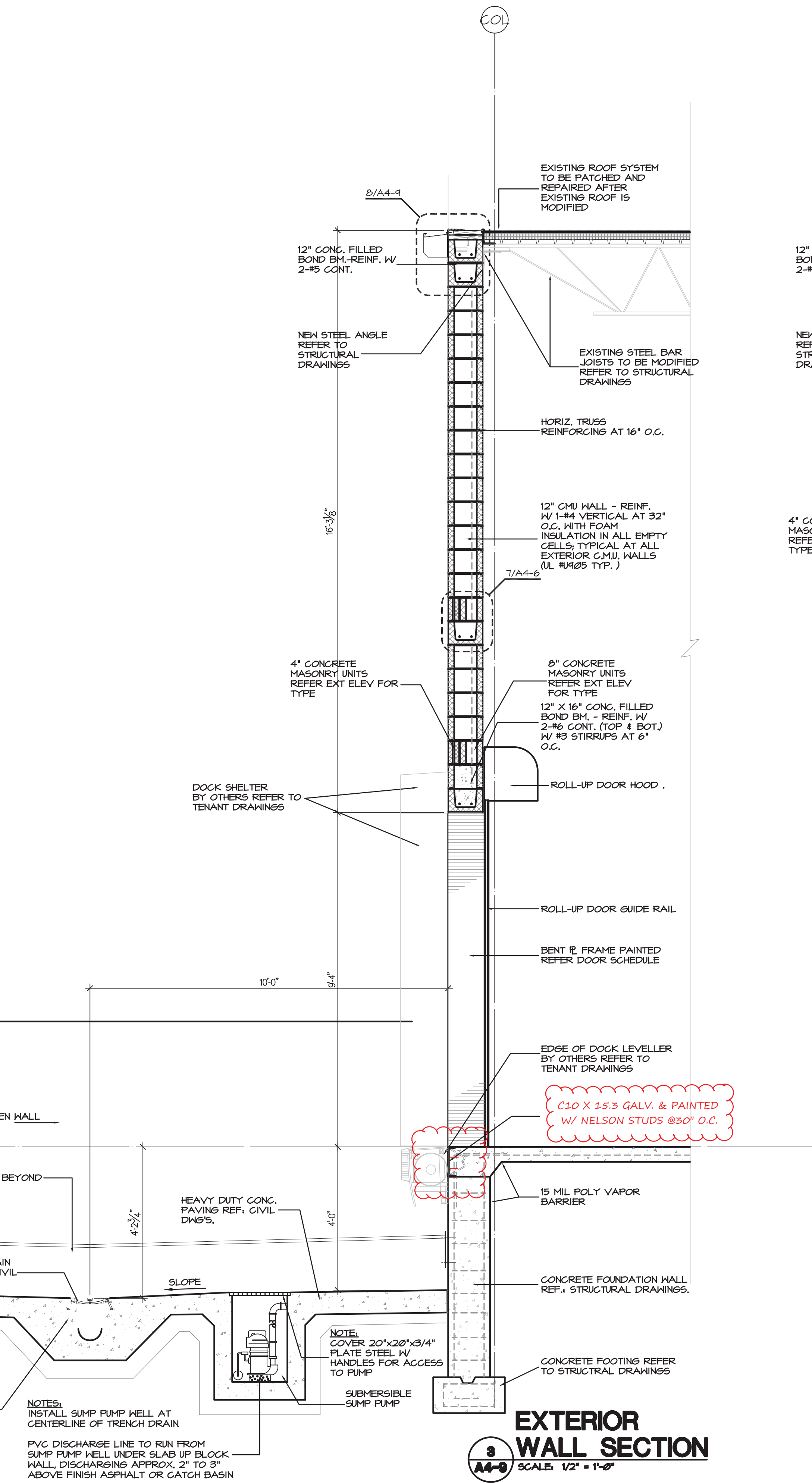
9 METAL COPING DETAIL
SCALE: 1" = 1'-0"



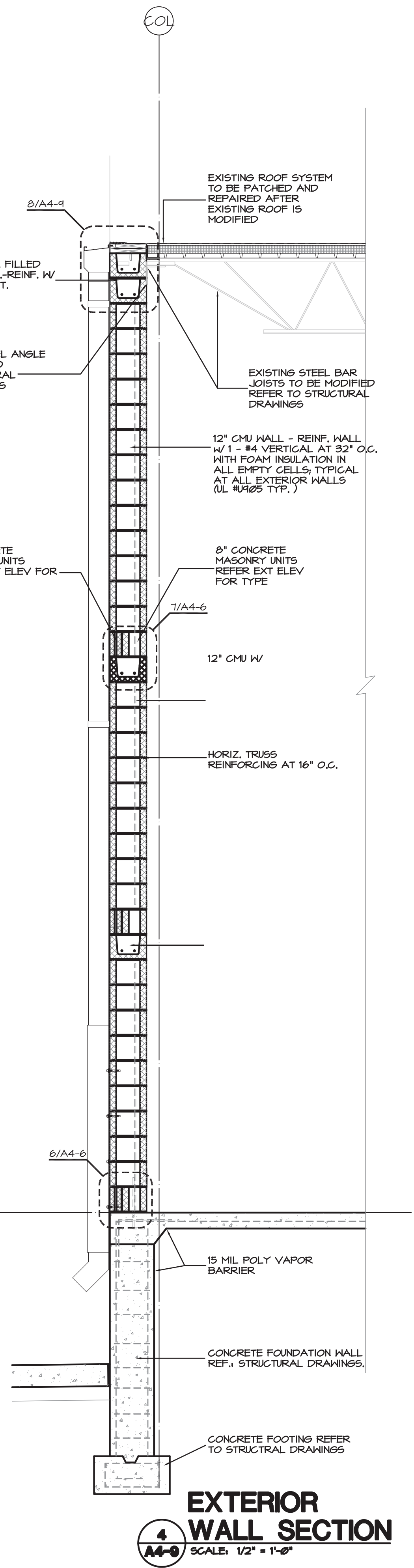
1 EXTERIOR WALL SECTION
SCALE: 1/2" = 1'-0"



2 EXTERIOR WALL SECTION
SCALE: 1/2" = 1'-0"



3 EXTERIOR WALL SECTION
SCALE: 1/2" = 1'-0"



4 EXTERIOR WALL SECTION
SCALE: 1/2" = 1'-0"

K:\809500\DRAWINGS\4-PLOT SHEETS\SHEETS\A4-9 EXTERIOR WALL SECTIONS.DWG 5/31/2011 10:02:26 AM TODD ARENZ