

ITEMS IN RED AND INDICATED WITH A CLOUD ARE BY WINDLE + VOLPE ARCHITECTS



Hermes Architects
Members A.L.A.
1177 West Loop South, Ste. 500
Houston, Texas 77027
Tel. 713-785-3644
www.hermesarchitects.com
Houston - Dallas - Ft. Worth

This document is an instrument of service protected by the copyright law of the United States of America, 17 U.S.C. § 102, and shall not be copied or reproduced without the express written consent of Hermes Architects, Inc.



CROSSROADS MALL RENOVATION
6834 WESLEY STREET
GREENVILLE, TEXAS 75401

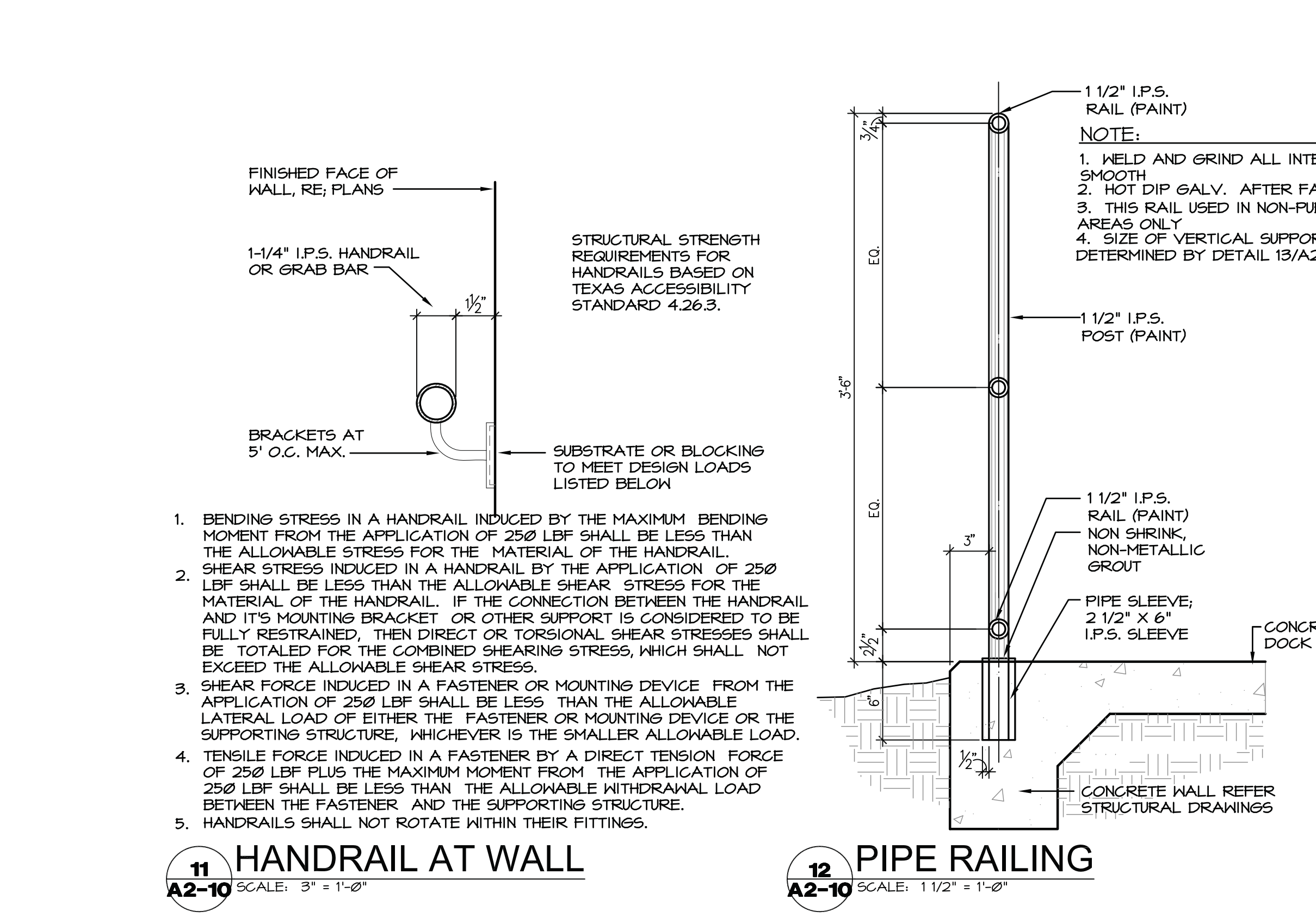
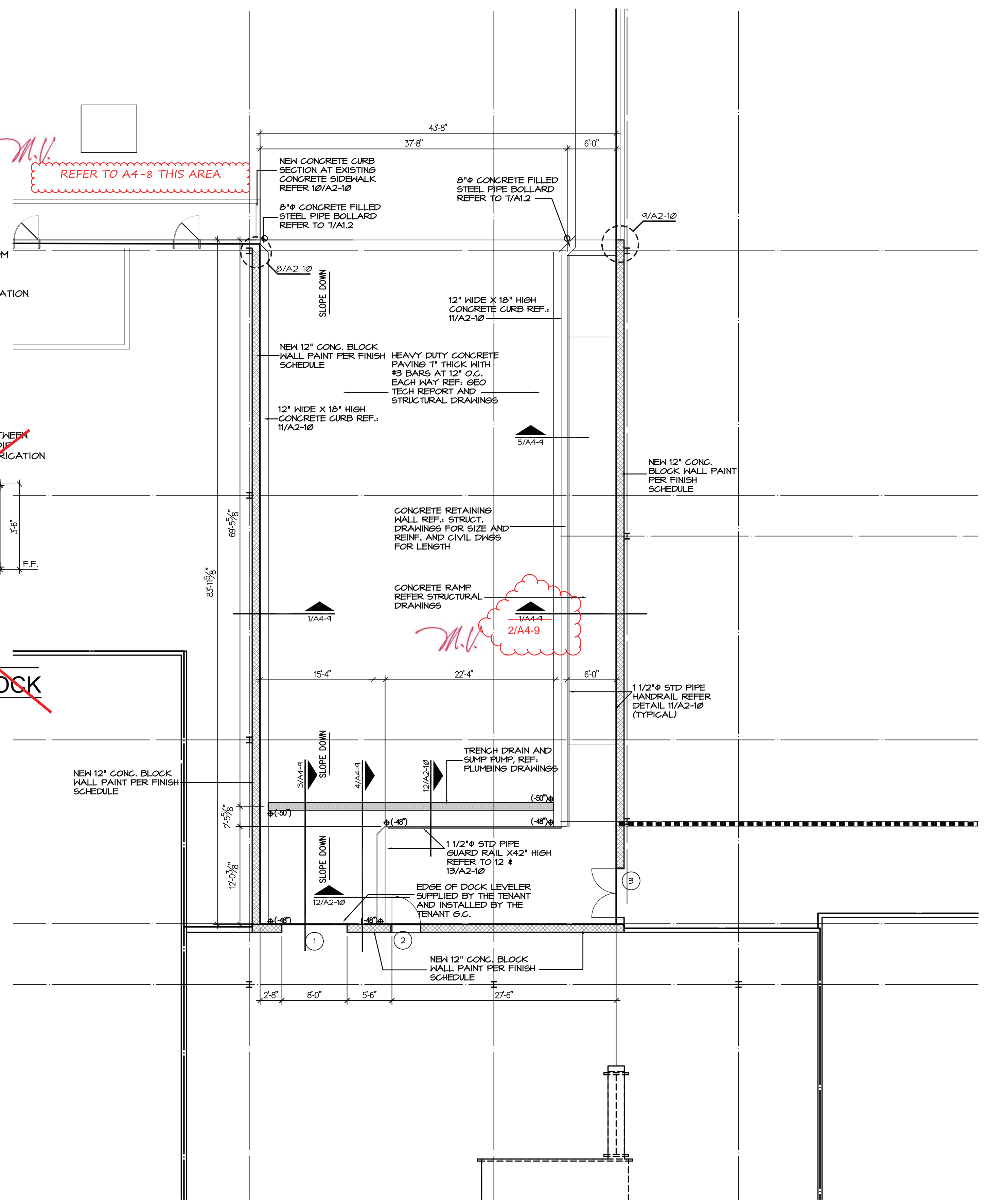
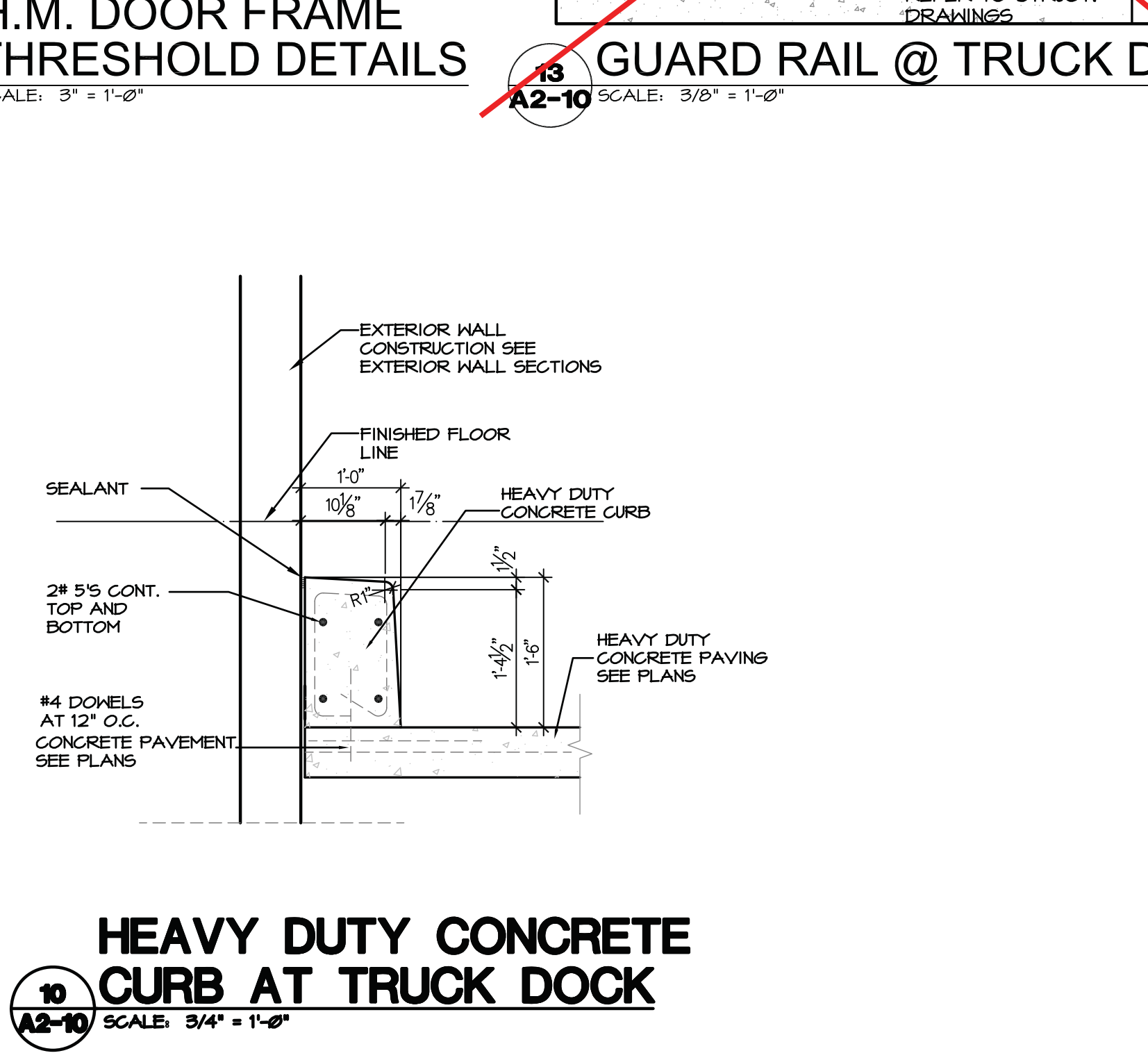
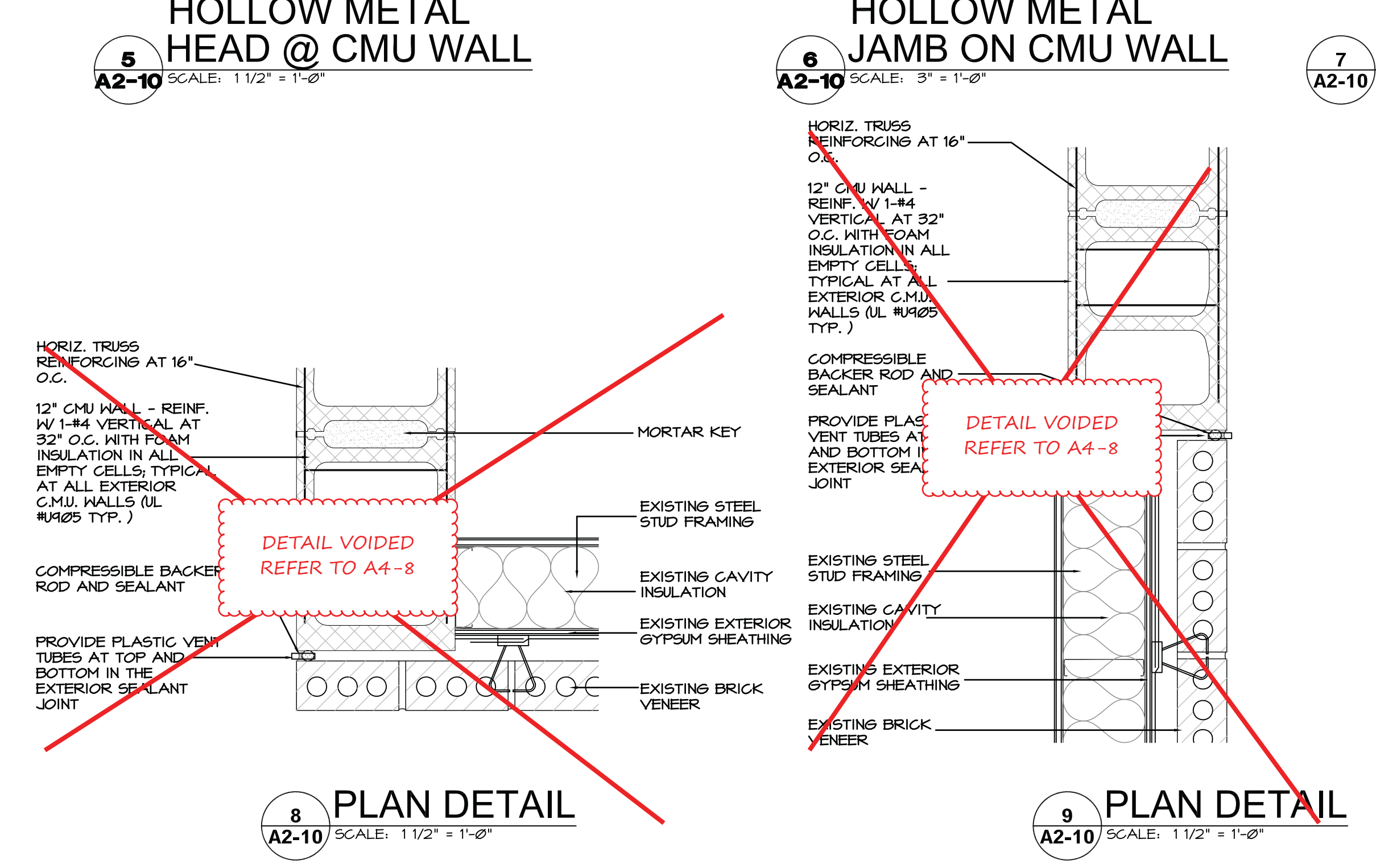
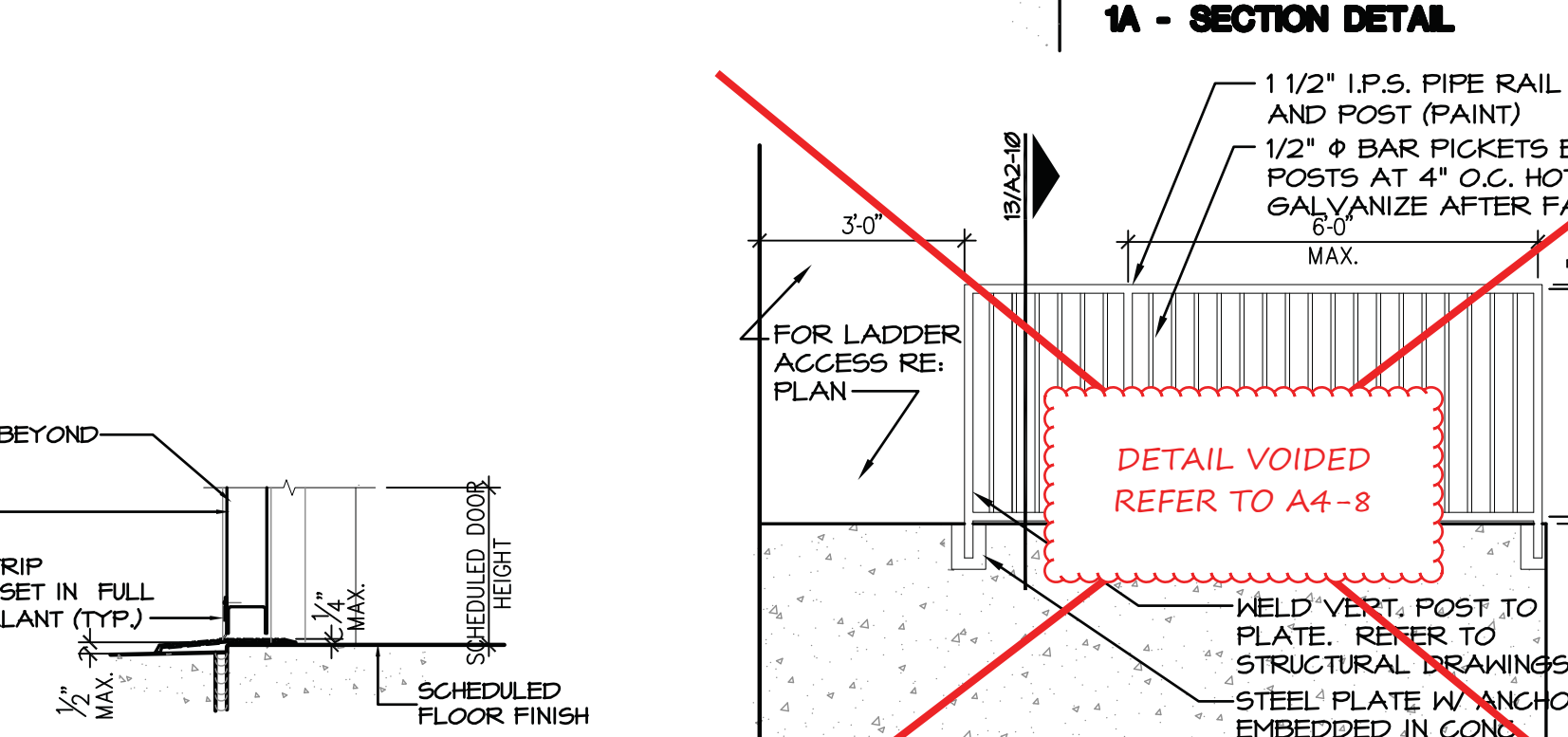
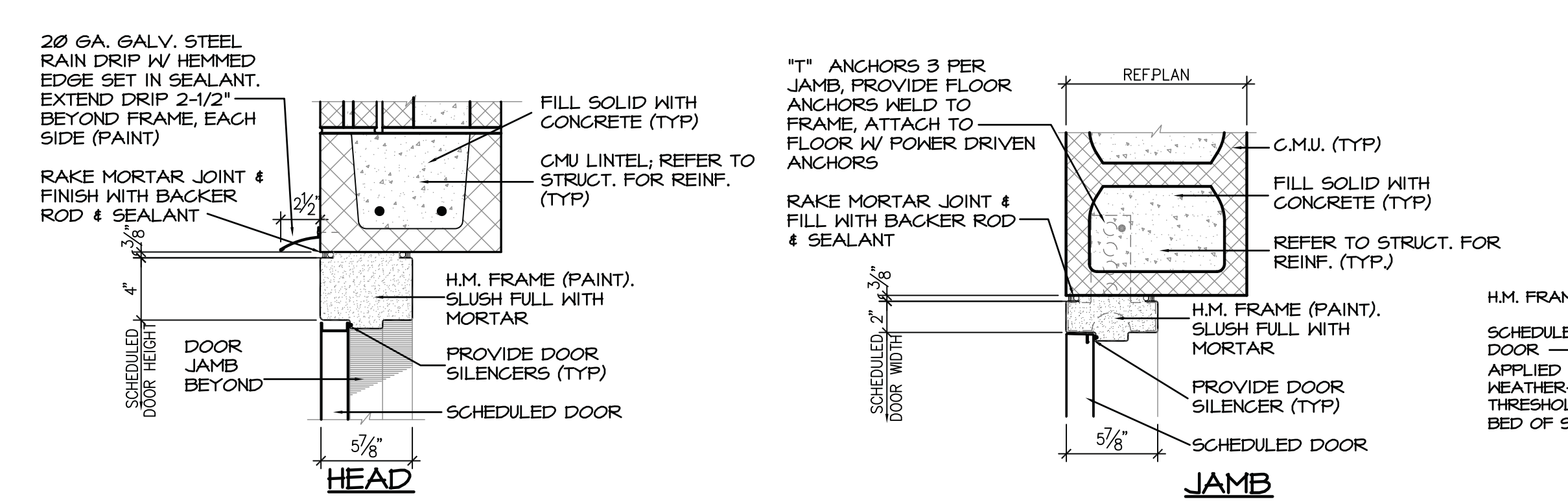
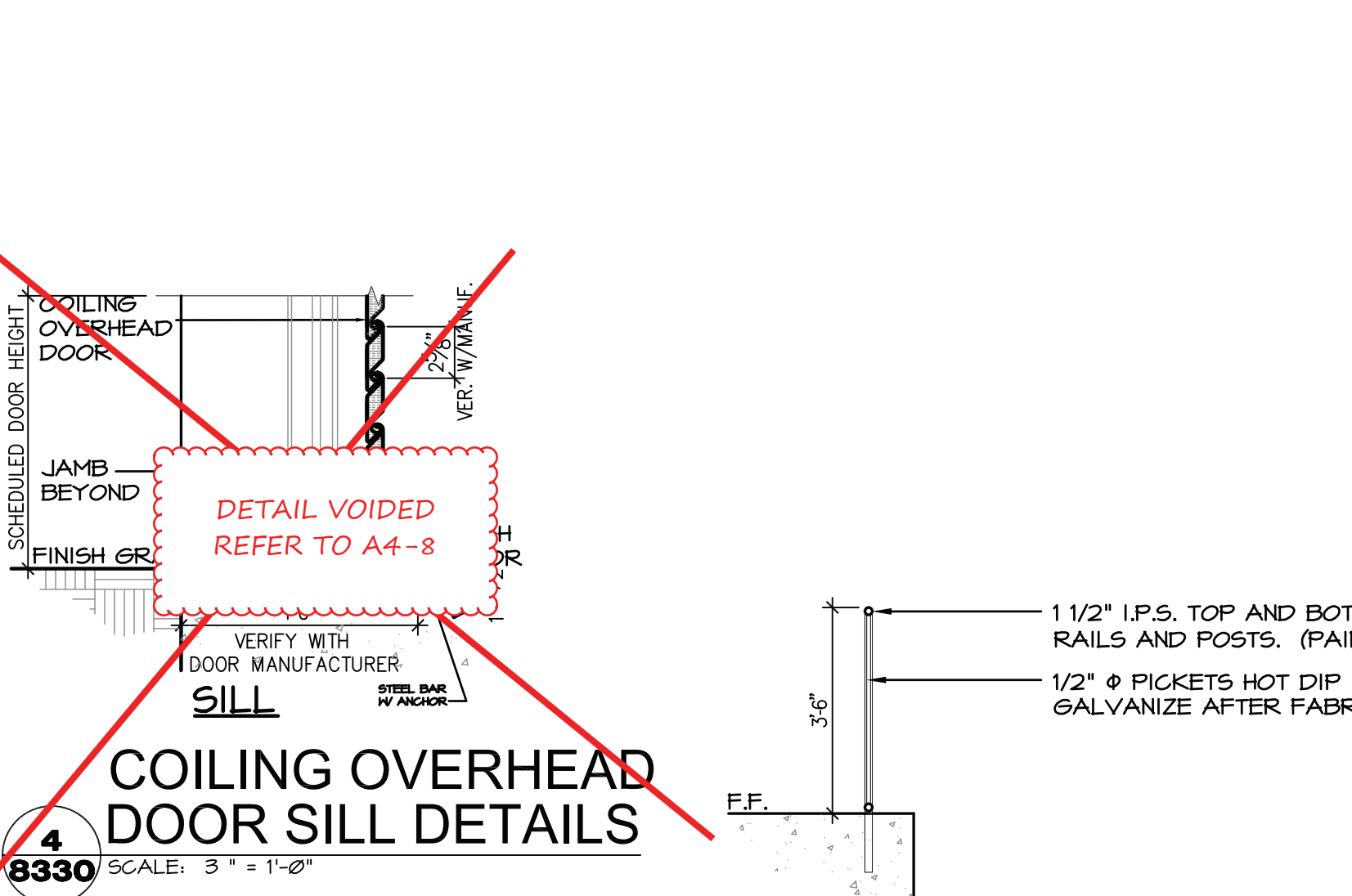
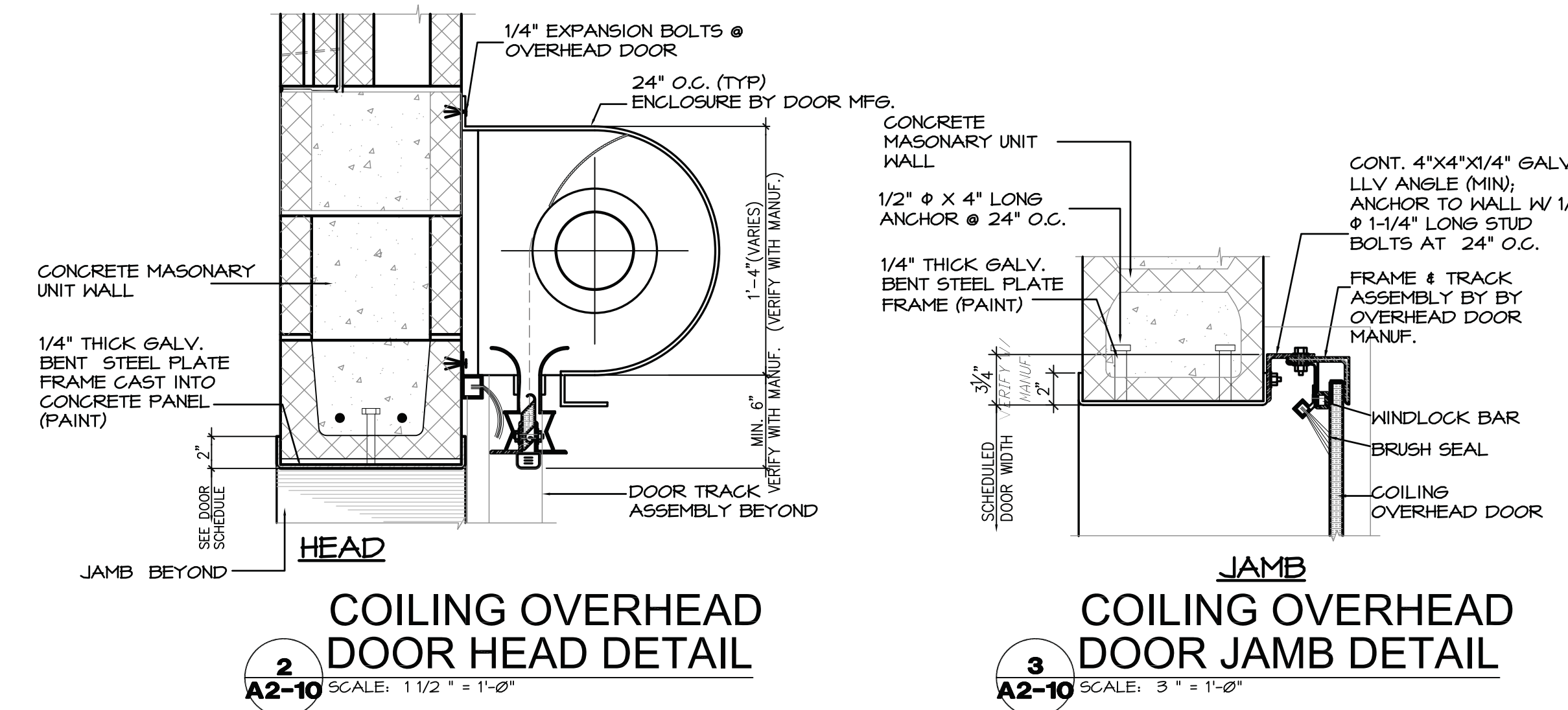
Triyar Retail
AN AFFILIATE OF TRIYAR CORPORATION, LLC

TRİYAR CO., LLC
10850 WILCHIRE BLVD.
SUITE 1050
LOS ANGELES, CA 90024

DATE: June 7, 2011
PROJECT NO.: 809501
DRAWN BY: ---
CHECKED BY: ---

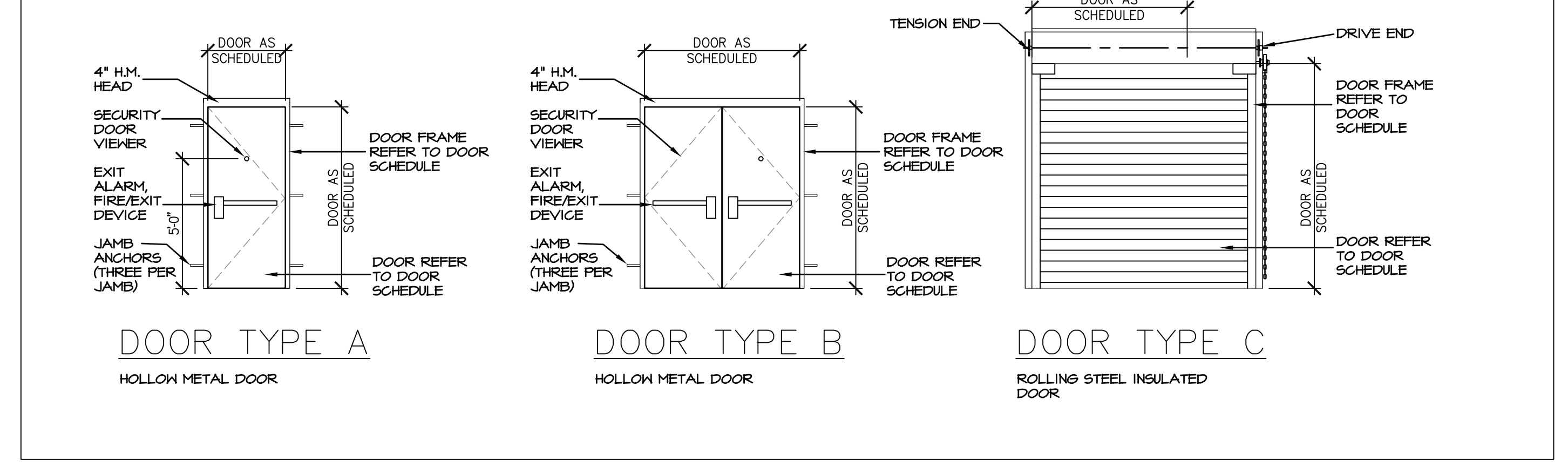
Enlarged Floor Plan Truck Dock Area

A2-10
4 OF 12
COPYRIGHT © 2011 Hermes Architects, Inc.



DOOR HARDWARE			
Quantity	Manufacturer	Model no.	Description
Hardware set no.1			
1	SCHLAGE LOCK CO	KS41F200	PAULOCK WITH INTERCHANGABLE CONSTRUCTION CORE
1	SCHLAGE LOCK CO	80-037	INTERCHANGABLE STORE CORE CORE
Hardware set no.2			
1	GRITMAN & ASSOC.	EC8B1101	FULL MORTISE HINGE 4.5"x4.5", STAINLESS STEEL WITH NON-REMOVABLE PIN
1	VON DUPRIN	22E0	RM EXIT DEVICE
1	LON CLOSERS	4041 CUSH	CLOSER WITH COVER (AT INTERIOR SIDE)
1	HAGER HINGE CO	520SN	ALUMINUM SADDLE THRESHOLD WITH NEOPRENE GASKET
1 SET	HAGER HINGE CO	862S	WEATHERSTRIPPING
1	HAGER HINGE CO	810SA	DOOR FRAME TOP RAIN CAP
1	HAGER HINGE CO	782SV	DOOR SILL RAIN CAP
1	RUDOLPH DESCO CO.	DS-6	SECURITY DOOR VIEWER
Hardware set no.3			
3	IVES	58B1 4.5 4.5	FULL MORTISE HINGE 4.5"x4.5", STAINLESS STEEL WITH NON-REMOVABLE PIN HINGES TO BE 170'
1	VON DUPRIN	22E0	RM EXIT DEVICE
1	LON CLOSERS	HAGER HINGE CO	HAGER HINGE C
Hardware set no.4			
1	IVES	WS402CCV/3436	DOOR STOP
2	IVES	R400 12"x2" LOW	SILENCERS
3	IVES	S884	SILENCERS

DOOR SCHEDULE														
NO.	SIZE	MATERIAL & TYPE	THK.	DOOR			FRAME			DETAILS		REMARKS	ID	
				LOCATION	TO	ELEV.	FINISH	LABEL	MAT.	FINISH LABEL	HEAD			JAMB
1	8'-0"x8'-4"	STEEL	---	TENANT SPACE	TRUCK DOCK	C	PREFIN.	STEEL PAINT.	2/A2-10	3/A2-10	4/A2-10	1	OVERHEAD COILING DOOR	
2	3'-6"x7'-0"	H.M.	1-3/4"	TENANT SPACE	TRUCK DOCK	A	PAINT	H.M. PAINT.	5/A2-10	6/A2-10	7/A2-10	2		
3	PR.3'-0"x7'-0"	H.M.	1-3/4"	EXIT HALLWAY	TRUCK DOCK	B	PAINT	H.M. PAINT.	5/A2-10	6/A2-10	7/A2-10	3		



K:_809500\DRAWINGS\4-PLOT SHEETS\A2-10 ENLARGED FLOOR PLAN TRUCK DOCK AREA.DWG 6/9/2011 3:55:39 PM TODD AREZIZ