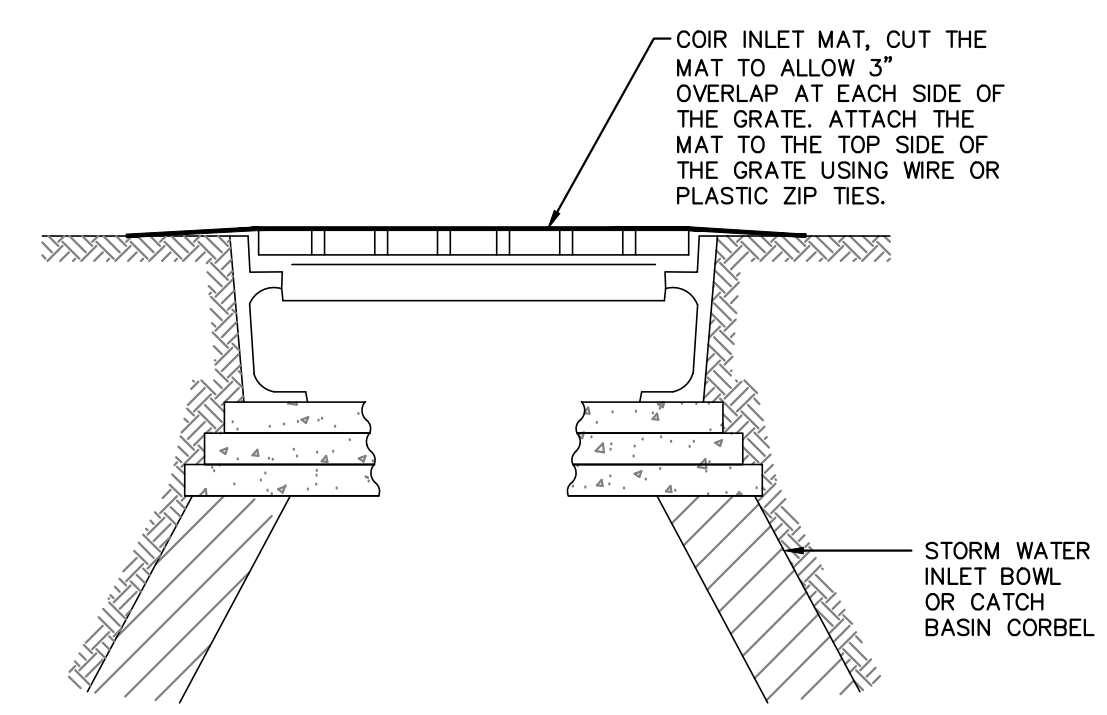


**NOTES:**  
 1. ADJACENT ROLLS SHALL BE OVERLAPPED, NOT ABUTTED.  
 2. INSTALLATION AND MAINTENANCE SHALL BE IN ACCORDANCE WITH THE INDIANA STORMWATER QUALITY MANUAL.

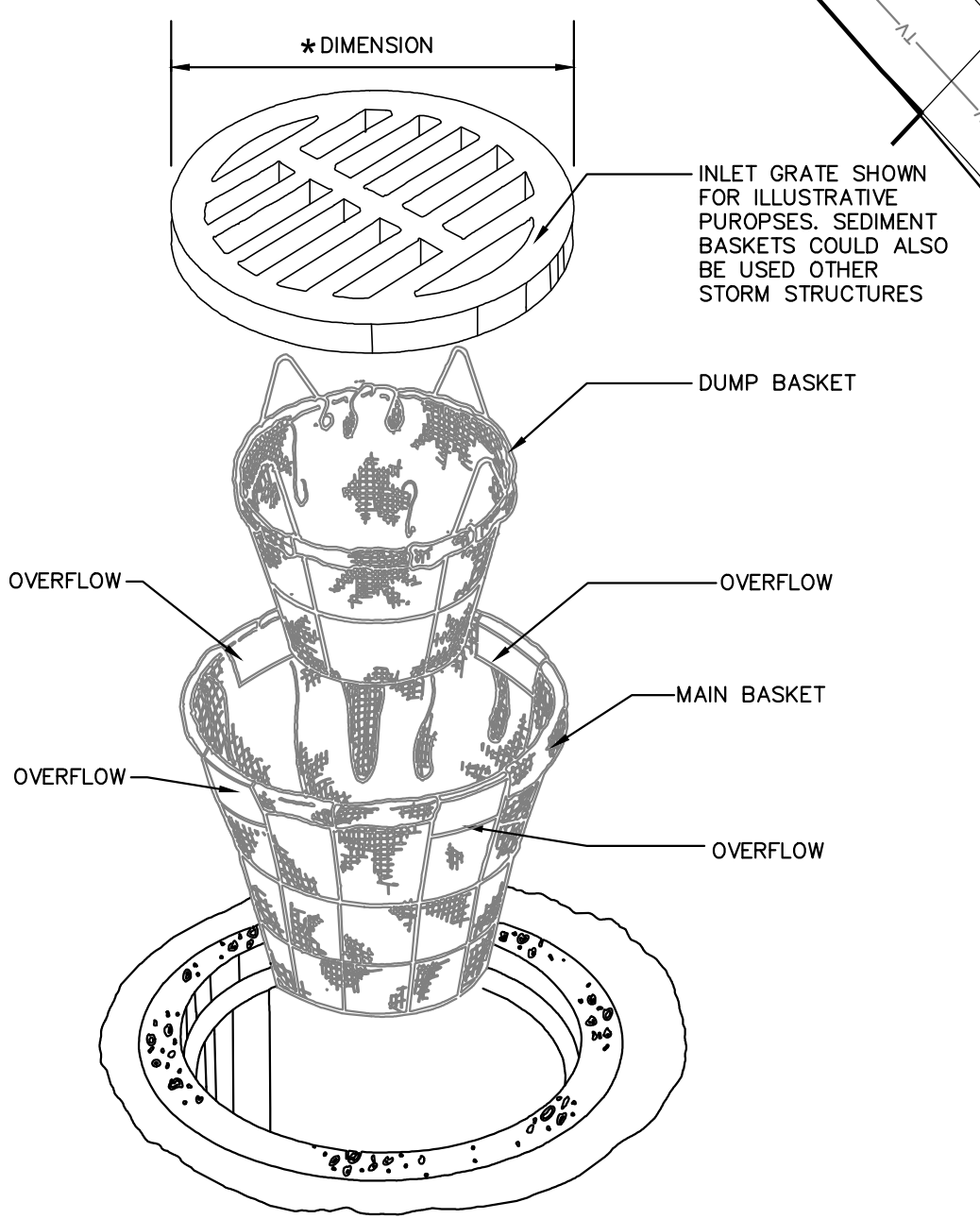
**STRAW WATTLE** (2)  
 NOT TO SCALE (C501)

- EROSION CONTROL LEGEND**
- ☉ SILT FENCE, PROPERLY ANCHORED
  - TEMPORARY EROSION CONTROL INLET PROTECTION
  - ⊠ OUTLET PROTECTION

- SOILS LEGEND**
- Uaz PSAMMENTS
  - UdpA URBAN LAND-BRISTOL COMPLEX, 0 TO 1% SLOPES

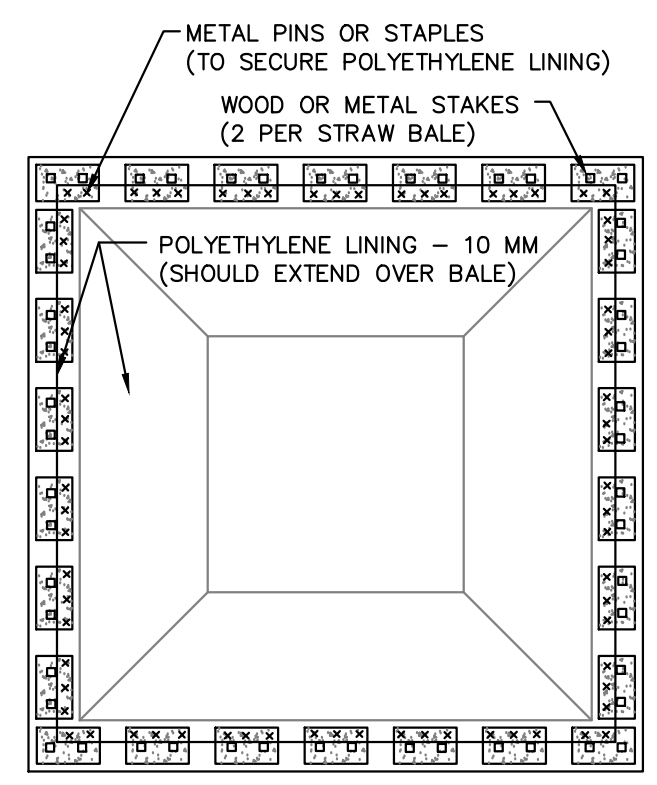


**INLET PROTECTION** (3)  
 NOT TO SCALE (C501)



**INSERT BASKET INLET PROTECTION** (1)  
 NOT TO SCALE (C501)

**NOTE:**  
 1. CONCRETE WASHOUT LOCATION TO BE DETERMINED BY CONTRACTOR. CONTRACTOR TO SELECT EITHER AN ABOVE GRADE SYSTEM AS DETAILED OR A PREFABRICATED WASHOUT SYSTEM/CONTAINER.  
 2. ABOVE GRADE SYSTEMS SHALL BE A MINIMUM OF 10 FEET X 10 FEET AND INCLUDE A MINIMUM OF 4" OF FREE BOARD TO ENSURE THE AREA WILL NOT OVERFLOW DURING A RAINFALL EVENT.  
 3. SYSTEM SHALL BE SIZED TO CONTAIN ALL LIQUID AND WASTE THAT IS EXPECTED TO BE GENERATED BETWEEN CLEANOUT PERIODS.  
 4. CONTRACTOR SHALL INSTALL THE SELECTED SYSTEM IN ACCORDANCE WITH THE INDIANA STORM WATER QUALITY MANUAL.



**CONCRETE WASHOUT ABOVE GRADE SYSTEM** (4)  
 NOT TO SCALE (C501)

REV	DESCRIPTION	BY	DATE						
<p>The concepts, designs, plans, details and other information shown on this document are the sole property of JPR and were created, developed, and prepared for use on this specific project. None of the concepts, designs, plans, details or other information shown on this document shall be used or disseminated without the expressed written permission of JPR. © 2017 JPR. All rights reserved.</p>									
<p><b>JPR JONES PETRIE RAFINSKI</b>          your one single source</p> <p>For: Wynn, Indiana          P: 264.42.2322</p> <p>South Bend, Indiana          P: 574.232.4188</p> <p>Elkhart, Indiana          P: 574.293.7762</p>									
<p>PRELIMINARY FOR REVIEW PURPOSES ONLY</p>									
<p>SHOPS ON CONCORD          TRYRAR COMPANIES, INC.          10850 WILSHIRE BOULEVARD, SUITE 1250          LOS ANGELES, CA 90024</p>									
<p>SITE EROSION CONTROL PLAN</p>									
<p>DESIGNED BY:          CHRIS CHOCKLEY</p> <p>DRAWN BY:          MMS, ARB</p> <p>DATE:          JANUARY 2017</p> <p>JOB NUMBER: 2016-0160</p> <p>SCALE:          1"=30'</p>									
<p>C-501</p>									

CA, 2016 Projects\2016-0160\CONCORD\Wynn\Site Erosion Control Plan - 1/13/2017 4:19:35 PM