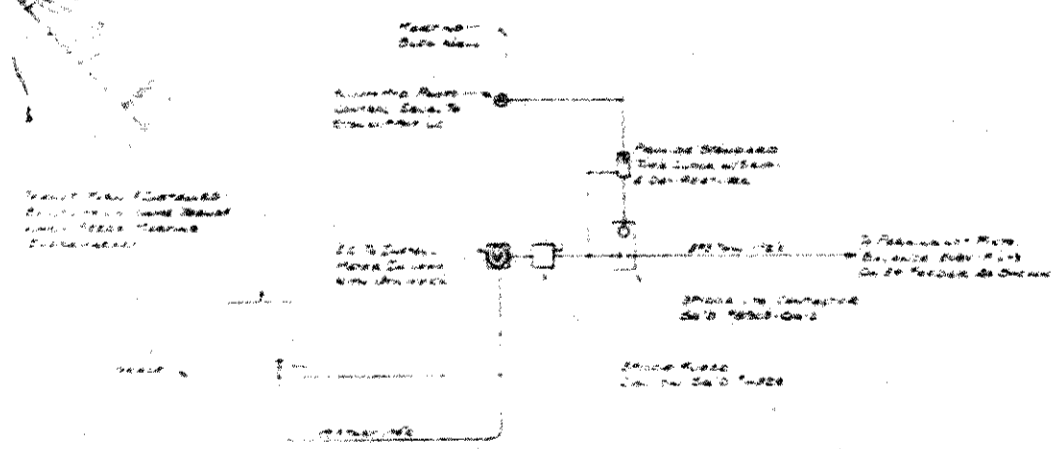
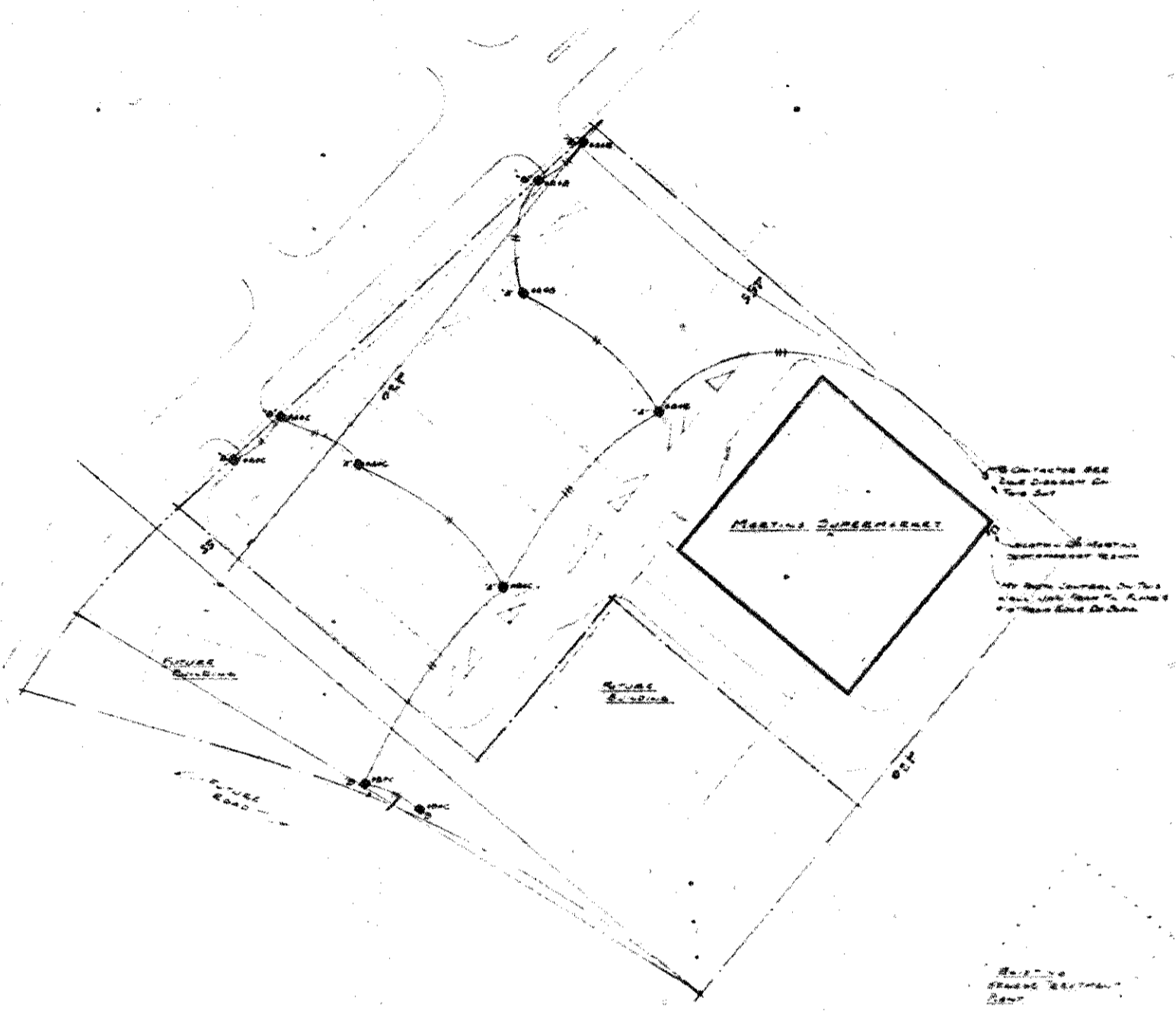


ELECTRICAL NOTES

1. LIGHTING FIXTURES TYPE "A" SHALL CONSIST OF MID-LIFE "B" 4000-HR. E-2 400-20, COMPLETE WITH MERCURY LAMP, 12" DIA. FURN. BY OWNER, INST. BY E.C.
2. LIGHTING FIXTURES TYPE "B" SHALL CONSIST OF MID-LIFE "B" 1000-20-R-200-20, COMPLETE WITH MERCURY LAMP, 12" DIA. FURN. BY OWNER, INST. BY E.C.
3. E.C. SHALL FURN. & INSTALL IN-LINE FUSES IN THE BASE OF EACH POLE.
4. ALL PERSIAN LAMP LIGHTING FIXTURES SHALL BE INSTALLED IN A CENTRAL WALL PLACING POLE.
5. ALL WIRING SHALL BE UNDER COMPLETE WITH 2" GALVANIZED STEEL CONDUIT, 2" DIA. PER POLE.
6. E.C. SHALL FURNISH & INSTALL CONCRETE BASES FOR ALL LIGHTING POLES. BASES FOR TYPE "A" POLES SHALL BE 24" DIAMETER, 18" HIGH, GRADE 4000 PSI CONCRETE. TYPE "B" POLES SHALL BE 18" DIAMETER, 18" HIGH, GRADE 4000 PSI CONCRETE.



ELECTRICAL SITE PLAN

GREENAWK - THORNTON ARCHITECTS
 1100 W. GRAND AVENUE, ANN ARBOR, MICHIGAN 48103
 REGISTERED PROFESSIONAL ARCHITECTS
 LICENSE NO. 14587
 M.A.R. ENGINEERING SUPERMARKET
 1100 W. GRAND AVENUE, ANN ARBOR, MICHIGAN 48103
 REGISTERED PROFESSIONAL ENGINEERS
 LICENSE NO. 14587