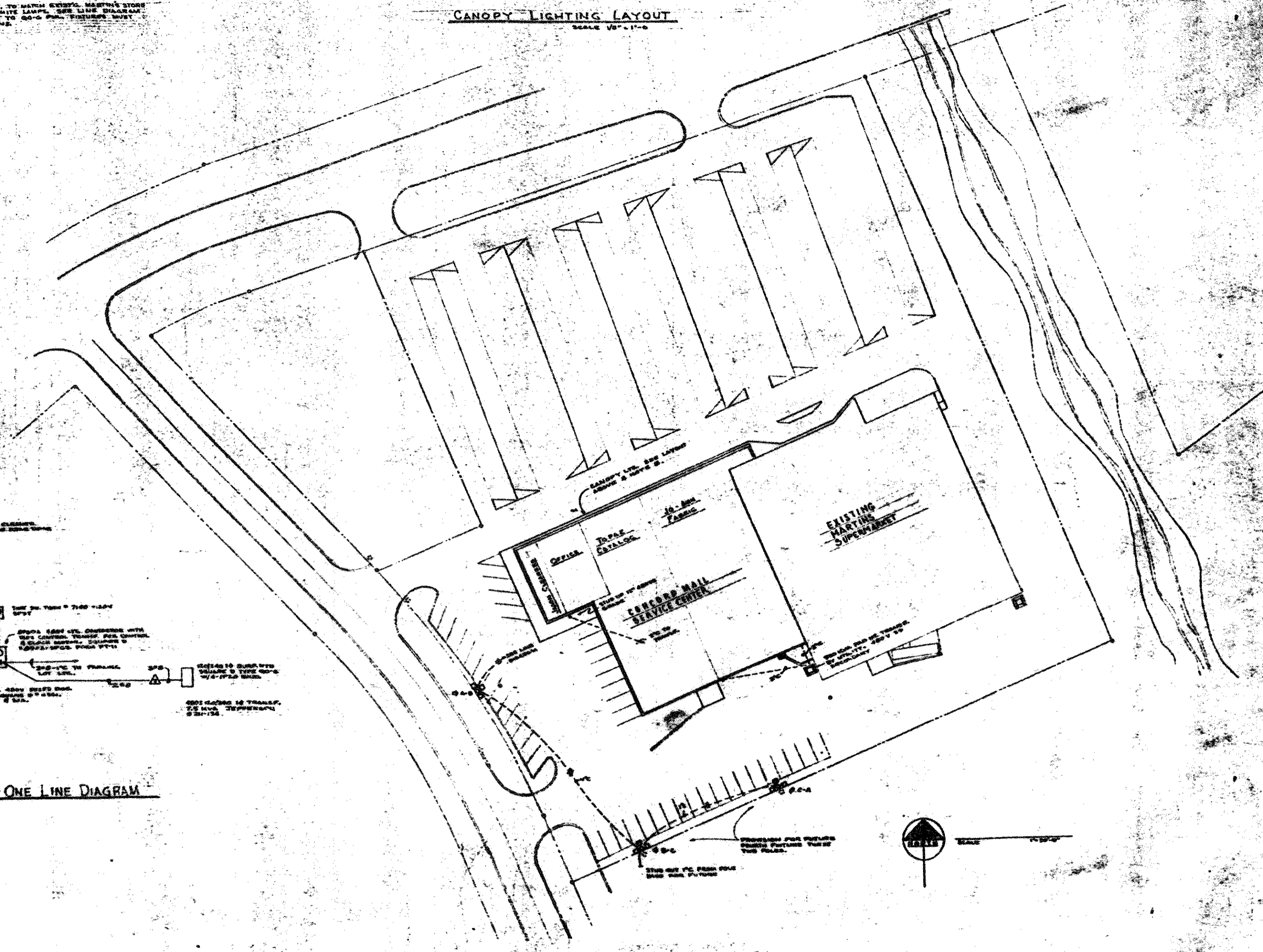
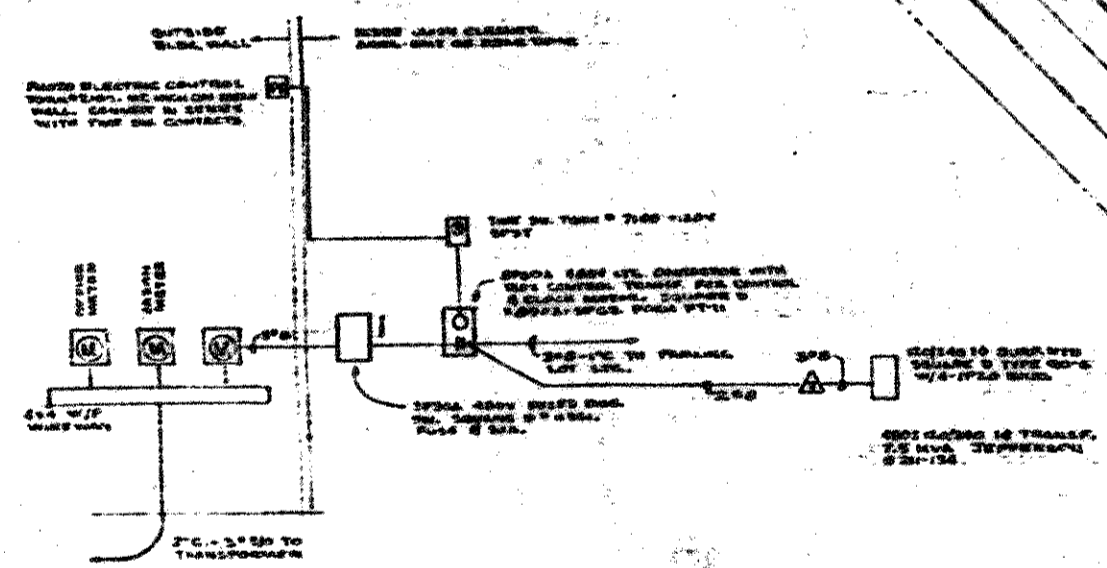
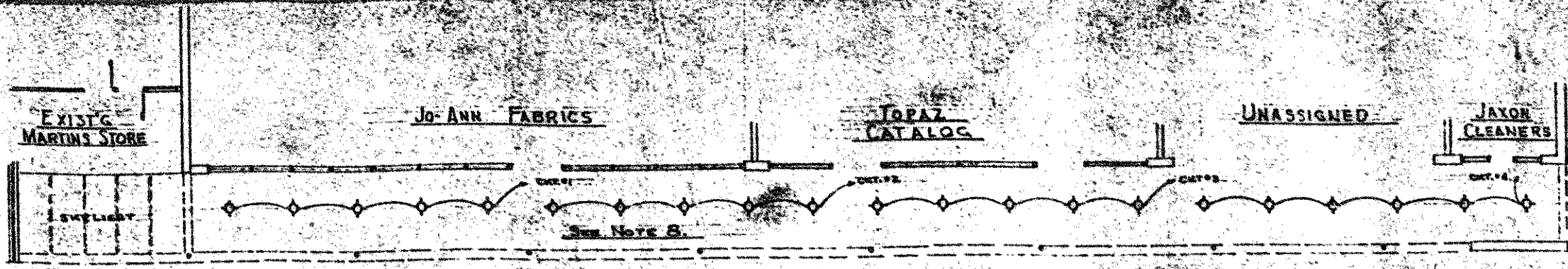


NOTES

1. LIGHTING FIXTURES - 8 WAXITE 8 DA-800-ALS PER POLE, 450V DELUXE WHITE MEDIUM LUMENS. COLOR TO MATCH EXISTING PARKING LOT FIXTURES.
2. POLES - 10' TALL, 4" DIA. COMPLETE W/BRACKET ARMS & LAMP ASSEMBLIES. PROVIDER TO FURNISH PAINT SPEC. PAINT TO MATCH EXISTING POLES.
3. POLE FOUNDATION - 24" DIA. CONCRETE PAVED 400 PSI CONCRETE, 20" ABOVE GRADE, 6" BELOW GRADE.
4. ELEC. CENTER TO RUN IN LINE WITH CENTER OF EACH POLE.
5. ALL UNDERGROUND WIRING TO BE INSTALLED IN HEAVY WALL DUCTE SERIAL PVC, 1" DIA. MIN. DEPTH - 24".
6. INSTALL PG. GROUND WIRE IN UNDERGROUND CONDUIT, CONNECT TO EACH POLE.
7. COMPARE ALL FIXTURES TO SEE IF ALL UNDISTURBED.
8. CONDUIT & WIRING TO BE INSTALLED IN LINE WITH EXISTING MARTIN'S STORE CANOPY (CONCRETE #1-28) WITH DELUXE WHITE LAMP. SEE LINE DIAGRAM FOR DETAILS. 450V WIRE SHALL BE CONNECTED TO 450V PANEL. THIS WORK MUST BE APPROVED FOR OUTDOOR & BEAM LOCATIONS.



STEINWALKER ARCHITECTS SERVICE CENTER ELECTRICAL SITE PLAN
 1000 W. 10th St., Grand Rapids, Michigan 49503
 PROJECT NO. 1000-1000-1000