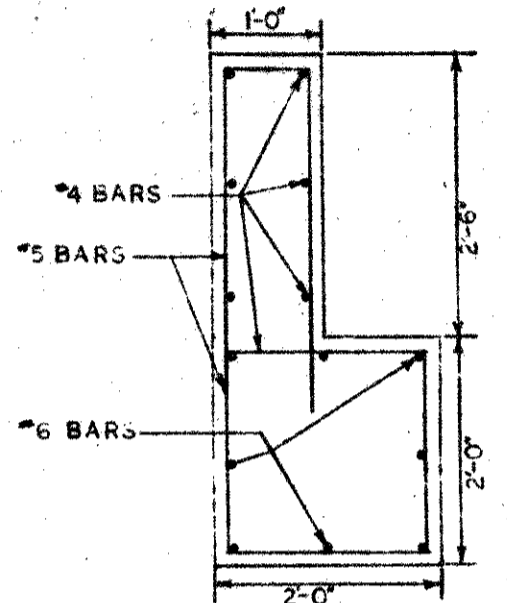
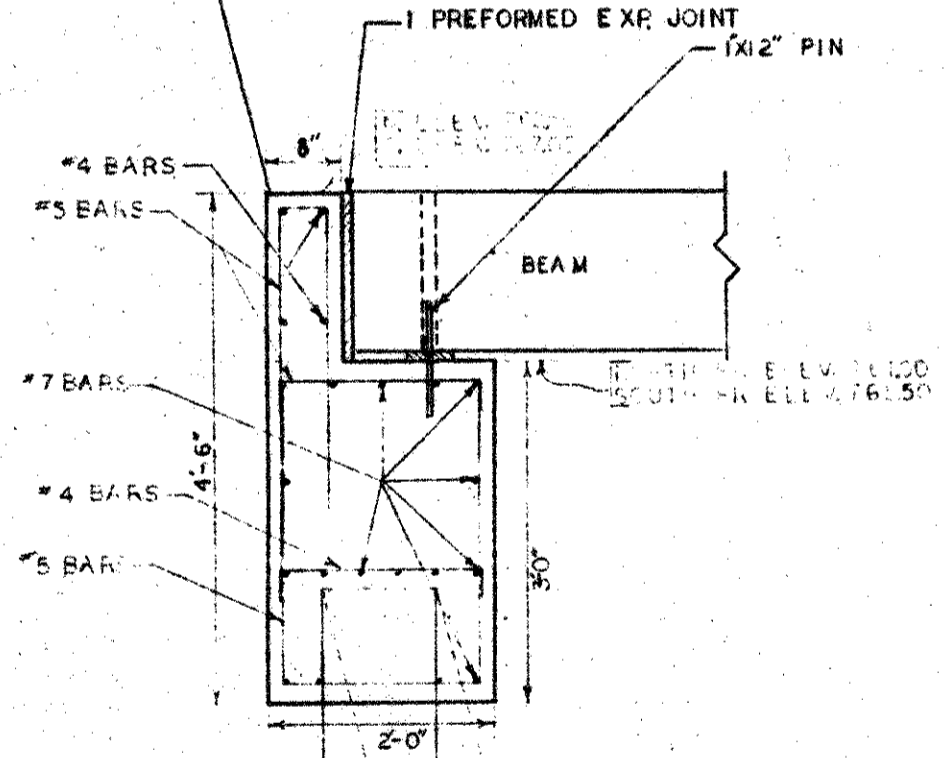


2 RUNS ALUM. GUARD RAILING
 GUARD RAIL POSTS 6'-3" CC. ALUM. 7 5/8" X 4 5/8"
 WITH 1" SPACER BETWEEN BEAM
 3/4" THREADED INSERTS

WING SECTION



NOTE: ONLY THE MUDWALL IS TO BE POURED PREVIOUS TO SETTING BEAMS



END BENT SECTION

SCALE 1/2" = 1'-0"

DATE: SEPT. 10, 1971 Concord Mill

SCALE 3/8" = 1'-0"