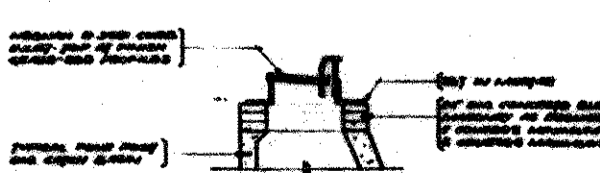
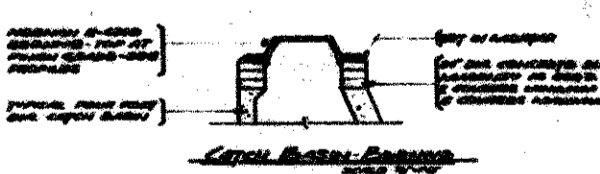
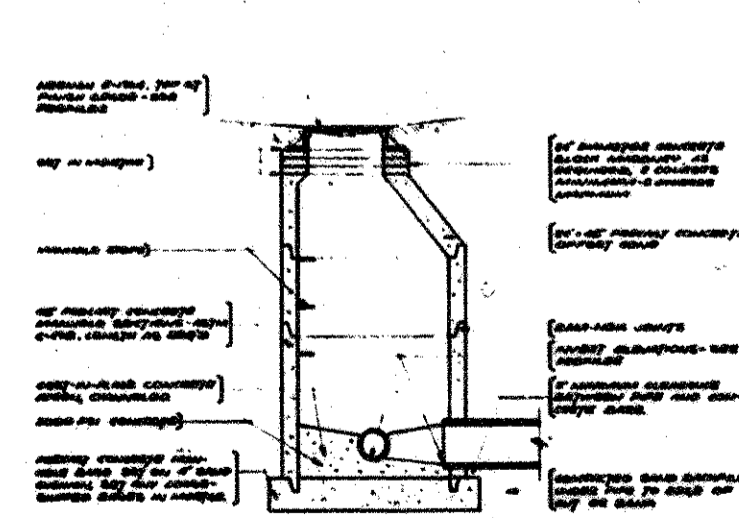
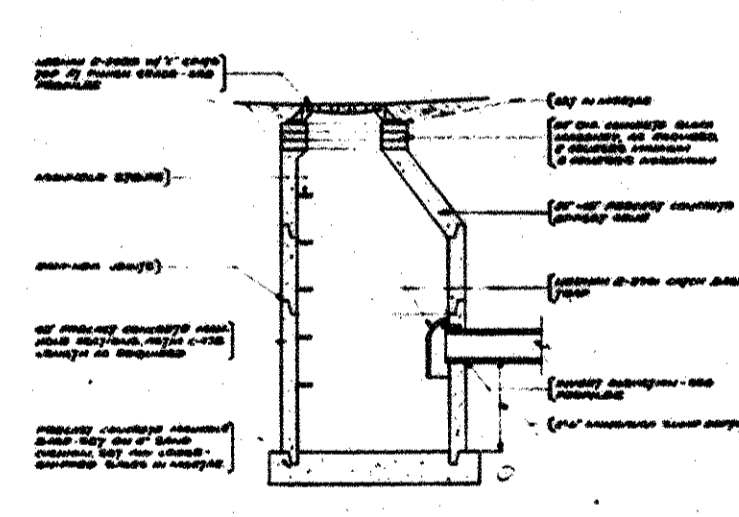
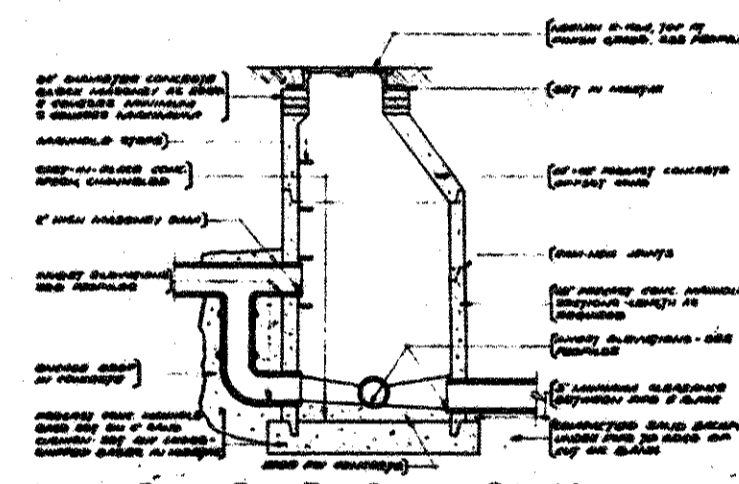
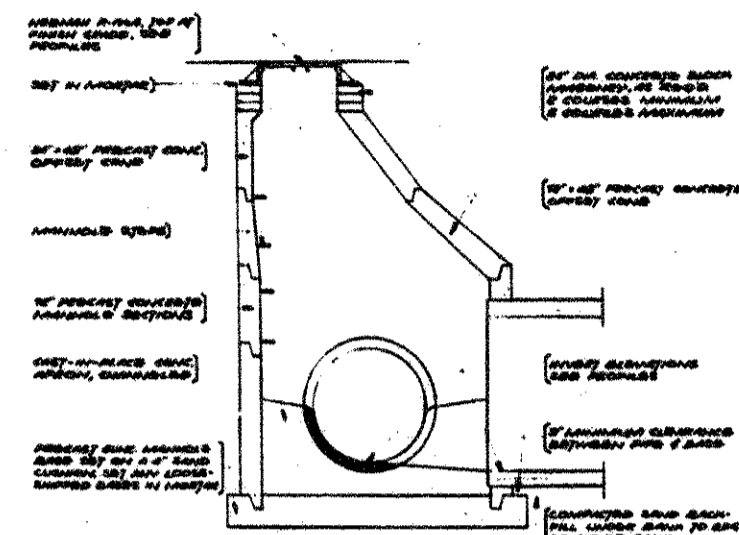
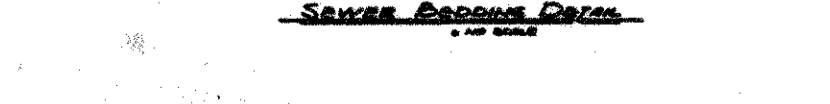
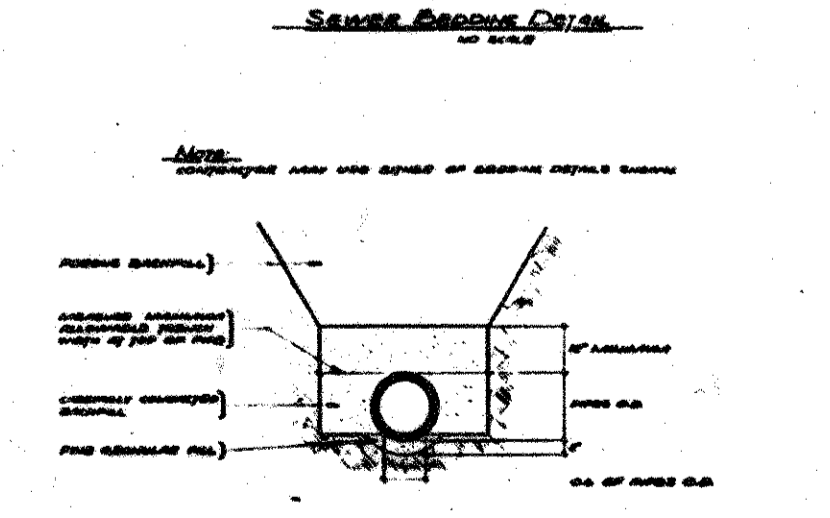
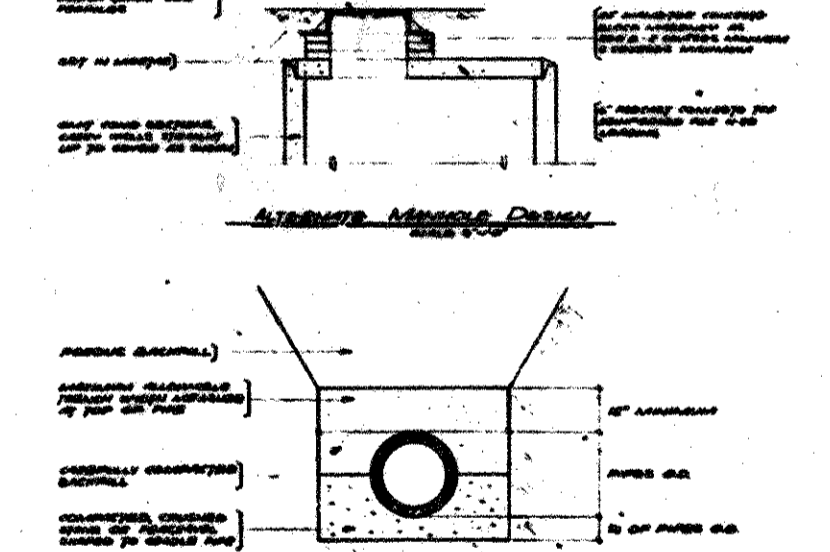
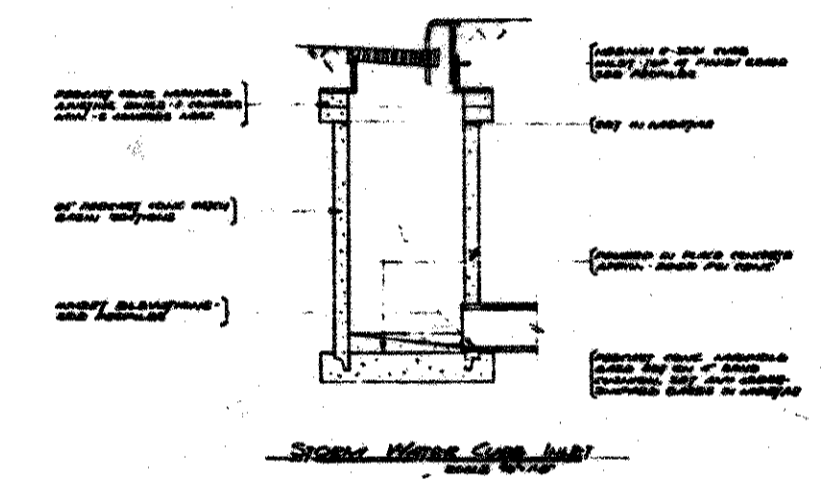
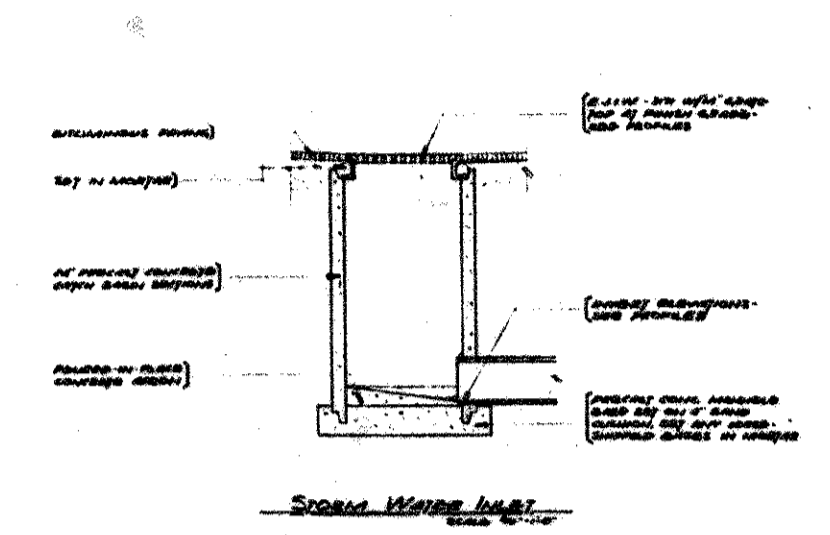


STEENWYK - THRALL ARCHITECTS INC.  
25 LAWETTE BL., GRAND RAPIDS, MICHIGAN 49509

PROGRESSIVE ENGINEERING CONSULTANTS  
OF GRAND RAPIDS INC. 616-565-6884  
2920 FULLER BL. GRAND RAPIDS, MICHIGAN 49505

CONCORD MALL  
ELKHART, INDIANA

UTILITIES - DETAILS



| DATE | REVISION FOR |
|------|--------------|
|      |              |
|      |              |
|      |              |
|      |              |



FILE NO. 7102-4

