

BENCH MARK NO. 1 - elev. 774.23
top of conc. base (at North edge) of
light pole 500' North of Mishawaka
Road @ NW end of 4' conc. island in
Concord Mall Drive

BENCH MARK NO. 2 - elev. 767.19
SE corner of conc. base of flag
pole 30' North of Center Drive
(180' East of Concord Mall Drive)

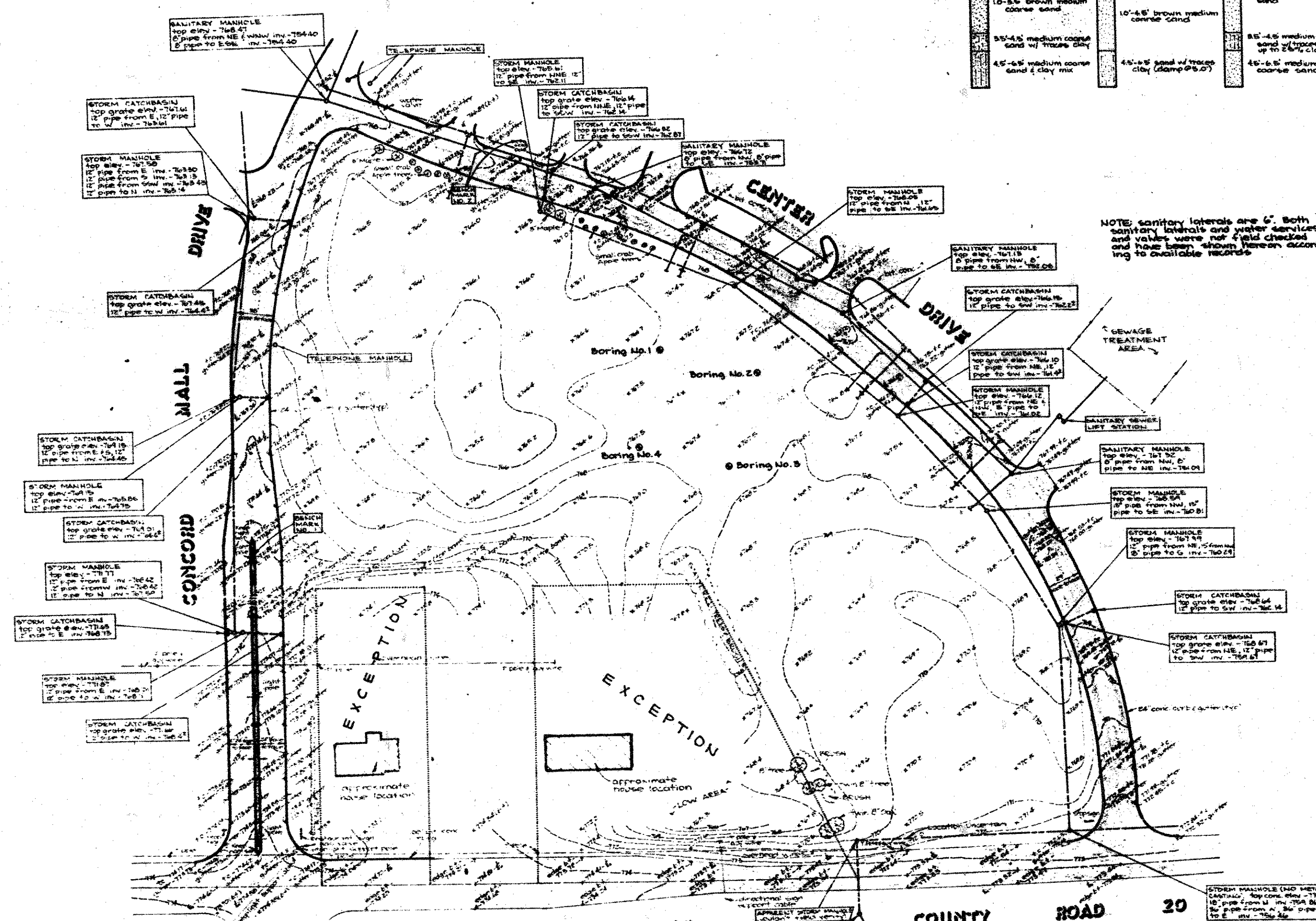
Note: Bench Marks shown hereon
are based on Concord Mall Finished
floor elevation of 766.00

BORING NO. 1
0'-10" dark medium coarse sand
10'-5 1/2" brown medium coarse sand
5 1/2'-4 1/2" medium coarse sand w/ trace clay
4 1/2'-6 1/2" medium coarse sand & clay mix

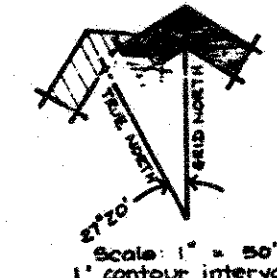
BORING NO. 2
0'-10" dark medium coarse sand
10'-6 1/2" brown medium coarse sand
4 1/2'-6 1/2" sand w/ trace clay (clay @ 6.5')

BORING NO. 3
0'-0 1/2" dark medium coarse sand
0 1/2'-5 1/2" medium coarse sand
5 1/2'-4 1/2" medium coarse sand w/ trace clay up to 2 1/2" clay
4 1/2'-6 1/2" medium coarse sand

BORING NO. 4
0'-10" dark medium coarse sand
10'-4 1/2" medium coarse sand
4 1/2'-0' clay loam
0'-6 1/2" medium coarse sand & clay mix



NOTE: sanitary laterals are 6". Both sanitary laterals and water services and valves were not field checked and have been shown hereon according to available records




Note: all directions referred to hereon are based on Grid North not True North

LEGEND
 - - - - - watermain (all watermain shown hereon is 6")
 - - - - - sanitary sewer (sizes noted with manhole information)
 - - - - - storm sewer (sizes noted with manhole & catchbasin information)
 - - - - - property line for exceptions

GENERAL NOTES:
 - STORM and SANITARY SEWER and WATERMAIN are the only underground utilities with the sizes and locations shown hereon
 - only surface locations of other utilities and topographical features are shown hereon where accessible
 - for information regarding GAS LINE location call: 219-234-2186 ext. 258 Northern Indiana Public Service Company - South Bend, Indiana
 - BASEMENTS are not shown hereon
 - any property line information shown hereon was not established at the time of this survey. The information is based on a survey by: Brads-KO, Inc. of Elkhart, Indiana

TOPOGRAPHICAL SURVEY
 for R.E. FRYLING, INC.
 2100 Chicago Drive, S.W.
 Grand Rapids, Michigan 49509
 Phone: 616-241-6561
 in part of the S1/2 of Sec. 22, T37N, R5E,
 Concord Township, Elkhart County, Indiana

Revisions	 excel engineering inc. 2605 CLAY AVE. S.W. - GRAND RAPIDS, MI 49508 PHONE (616) 531-3880	File No.	Drawn by	Sheet No.
		76130	G	1 of 1
Date	October 8, 1976			